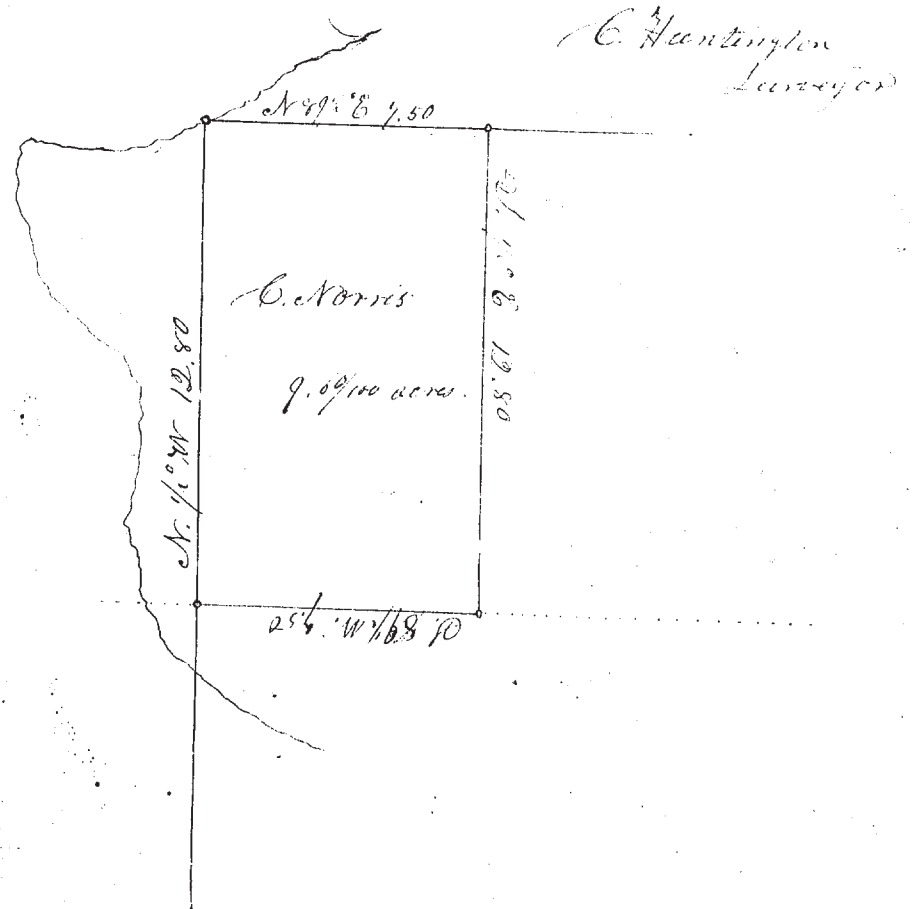


No. 36 Survey of the North west part of Lot etc. 64 in Perry for Carlos Norris as follows beginning in the North line of the mill etc ridge road where the same crosses the West line of said Lot 64. Thence following the West line of said Lot N. 1/2° W. 12 chains 80 links to a stake in the North West corner of said Lot (being in the channel of mill creek) from which a chestnut tree two feet in diameter bears S. 62° E. 34 links distant. Thence N. 89 1/2° E. 7 chains 50 links to a stake in the North line of said Lot. Thence S. 1/2° E. 12 chains 80 links to a stake in the South line of said road. Thence S. 89 1/2° W. 7 chains 50 links to the place of beginning - containing nine acres and sixty hundredths of an acre of land.



No. 37 Survey of a part of Lots Nos 20 & 21 in Leroy owned by Silas Wead as follows beginning at the South West corner of said Wead's part of Lot etc. 21 at the place in the West line of said Lot. Thence run N. 89 1/2° E. 11 chains 64 links to a stake in the E. line of said Lot 21. Thence S. 1/2° W. on the lot line 24 chains 97 links to the centre of the State road leading from Rainesville to Bloomfield. Thence following said road N. 41° W. 7 chains 80 links. Thence S. 1/2° E. 19 chains 25 links to a post. Thence S. 89 1/2° W. 6 chains 46 links to a post standing in the West line of Lot No. 21. Thence S. 1/2° E. 11 chains 64 links to the place of beginning - containing 22 acres in said Lot etc. 21.

Also a part of Lot No. 26 as follows; Beginning at a stake standing in the West line of Lot 21 at the bottom of the bank of the creek and 1 chain 60 links North of the S.W. corner of the above survey of part of Lot 21. Thence run N. 1/2° W. on the line between Lots No. 20 & 21 - 10 chains 07 links to a stake. Thence S. 89 1/2° W. 5 chains 60 links. Thence S. 66° W. 2 chains. Thence S. 84 1/2° W. 3 chains. Thence S. 77 1/2° E. 2 chains 90 links to a <sup>large</sup> maple tree two feet in diameter standing on the East side of the creek. Thence S. 64° E. 10 chains 84 links to the place of beginning - containing six acres and ninety nine hundredths of an acre of land - being the piece of land on which Silas Wead's saw mill now stands in Lot No. 25.

Surveyed May 17 - 1868  
C. Huntington Surveyor

See a plot of the above on the next page.