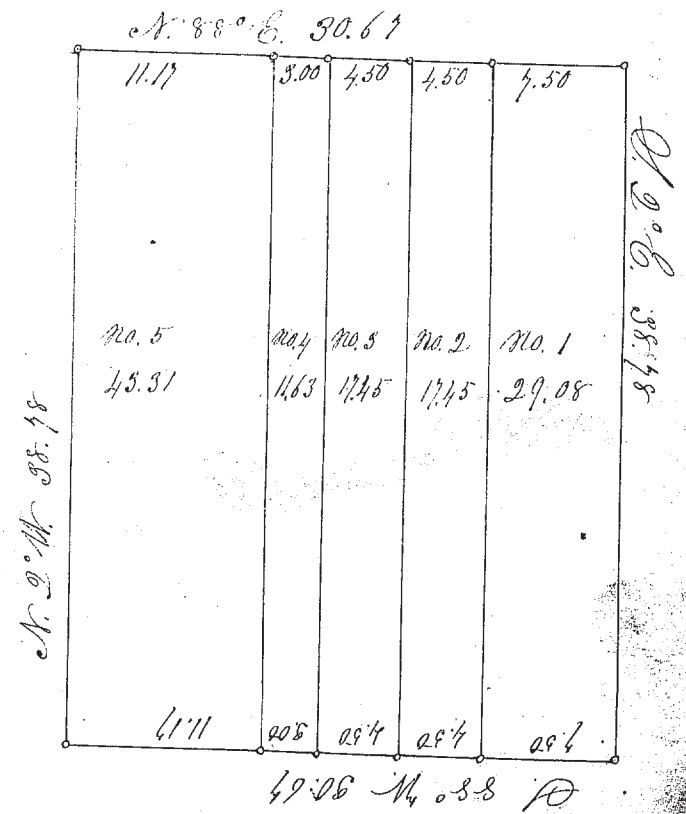


No. 33. Survey and subdivision of Lot No. 8, Tract No. 1, Township No. 9 in the 9th Range. Commence at the N.E. corner of said Lot. Thence run S. 2° E. on the E. line of the Lot 88 chains 75 links to a point in the S.E. corner of said Lot. Thence S. 88° W. 30 chains 67 links to the S.W. corner of said Lot. Thence N. 2° W. 88 chains 75 links to the N.W. corner of said Lot. Thence N. 88° E. on the N. line of said Lot 30 chains 67 links to the place of beginning, containing 118 acres and 93 hundredths of an acre of land.

The subdivision of said Lot commences on the E. side and numbers 1 to 5, with the width and area of each subdivision lot given. The lines being parallel with the lot lines. Lot No. 1, is 7 chains 50 links in width and contains 29.08 1/100 acres. No. 2 is 4 chains 50 links wide, and contains 17.45 1/100 acres. No. 3 is 4 chains 50 links wide, and contains 17.45 1/100 acres. No. 4 is 8 chains wide and contains 11.63 1/100 acres. No. 5 is 11 chains 17 links wide and contains 43.8 3/100 acres.



Sept. 13, 1847

C. Huntington Surveyor