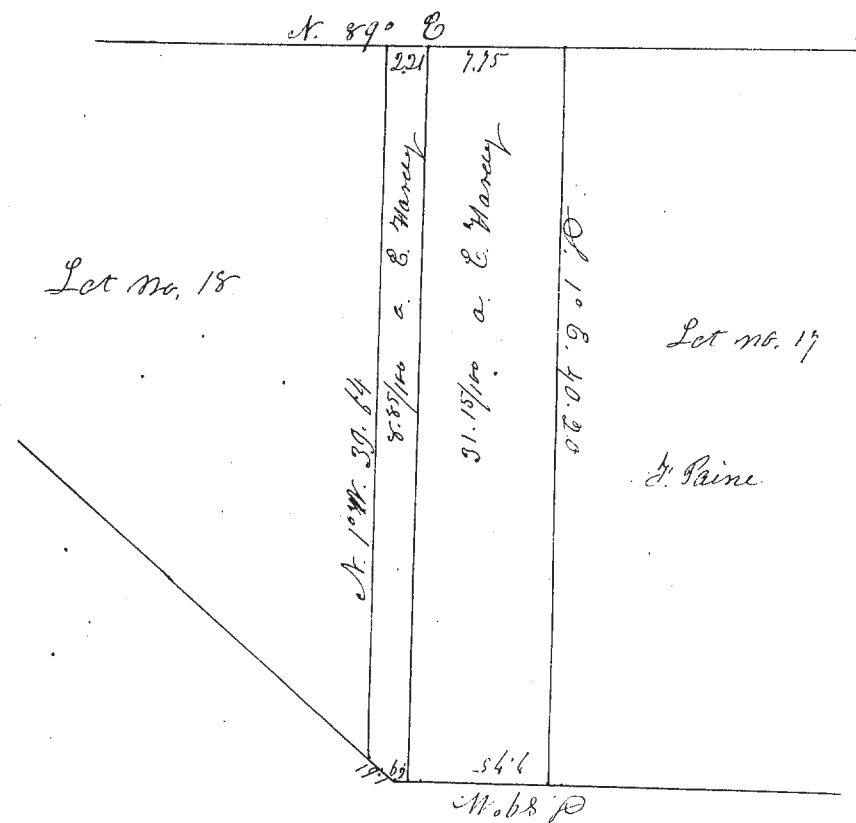


No. 31 } Survey of the West part of Lot No. 17 and the east part of Lot No. 18 in Tract No. 4 Township No. Eleven Eighth Range. Beginning at the S. E. corner of Lot No. 18 thence S. 89° W. 69 links - N. 71° W. 1 chain 61 links - N. 1° W. 39 chains 64 links to the N. line of Lot No. 18. Thence with said line - N. 89° E. 9 chains 16 links to the west line of Franklin Paines Lot in Lot 17. Thence S. 1° E. 40 chains 20 links to a stake in the centre of the road at the S. W. corner of said Paines Lot. Thence S. 89° W. 7 chains 75 links to the place of beginning - containing forty acres of land viz. thirty one acres & 15/100 in Lot No. 17 - and eight acres & 5/100 in Lot No. 18.

Surveyed Aug. 10-1847

C. Huntington Surveyor



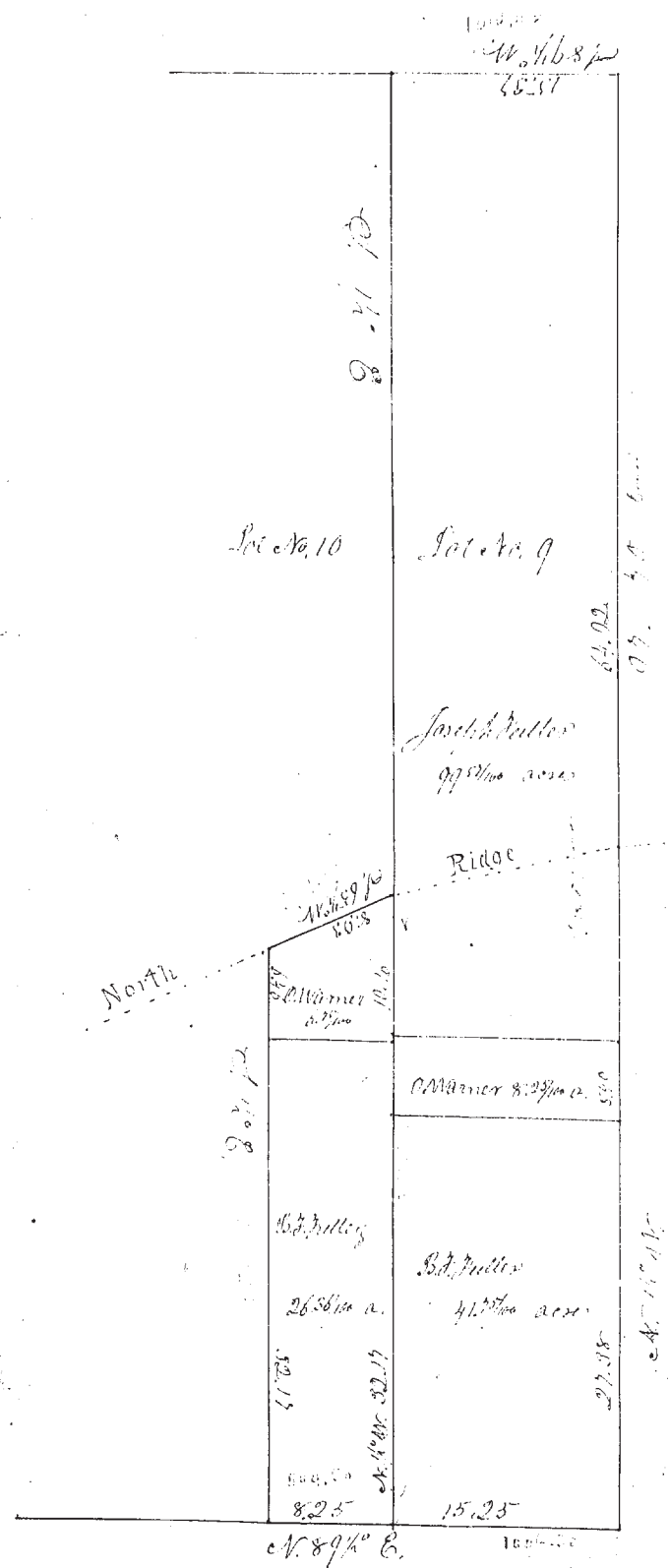
No. 32 } Survey of Lot No. 9 Tract No. 3 Township 12 Range 6 with a subdivision of the same as follows beginning at the S. W. corner of said Lot No. 9. Thence run N. 79 1/2° E 15 chains 25 links to the centre of an N. Y. St. road and stuck a stake from which the N. E. corner of William Barrows dwelling house bears S. 8 1/2° W. 79 links distant. Thence N. 7 1/2° W. 97 chains 70 links to a stake in the N. E. corner of said Lot. Thence S. 89 1/2° W. 15 chains 37 links to the N. W. corner of said Lot. Thence S. 1/2° E. 97 chains 70 links to the place of beginning. Containing one hundred forty nine acres and fifty seven hundredths of an acre of land.

Also a part of Lot No. 10 Tract No. 3 Township No. 12 Range 6 as follows. Beginning at a stake in the S. W. corner of said before mentioned Lot No. 9. and being the S. E. corner of Lot No. 10. Thence N. 7 1/2° W. on the dividing line between Lots No. 9 & 10 42 chains 33 links to a stake in the centre of the North Ridge road. Thence S. 65 1/2° W. 8 chains 93 links to a stake. Thence S. 1/2° E. 38 chains 63 links to a stake in the S. line of said Lot No. 10. Thence N. 89 1/2° E. 8 chains 25 links to the place of beginning containing thirty three acres & eleven hundredths of an acre of land.

Surveyed Aug. 30 & 31. 1847

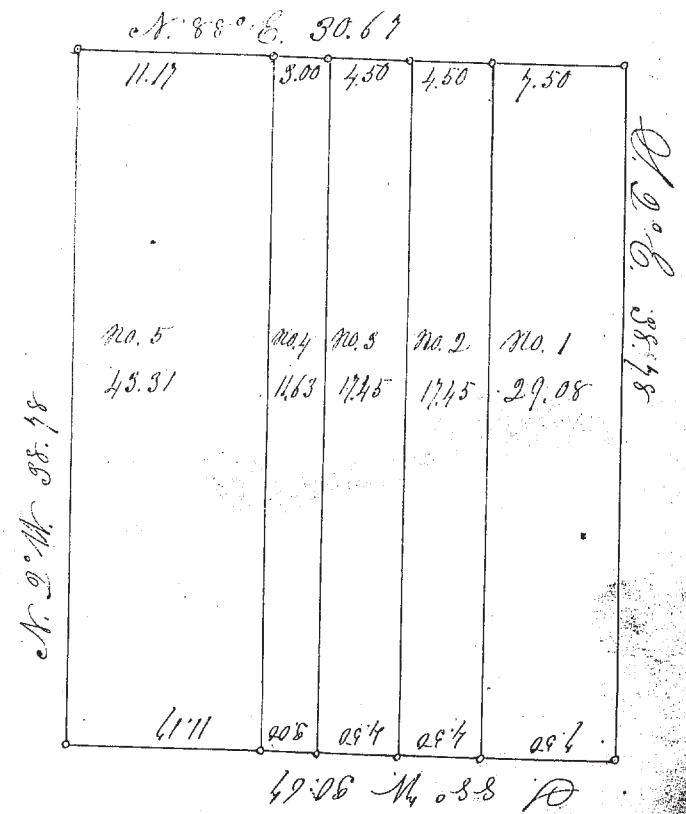
C. Huntington Surveyor

See plot of the foregoing with the subdivisions on the next page.



No. 33. Survey and subdivision of Lot No. 8, Township No. 9 in the 9th Range. Commence at the N.E. corner of said Lot. Thence run S. 2° E. on the E. line of the Lot 88 chains 75 links to a point in the S.E. corner of said Lot. Thence S. 88° W. 30 chains 67 links to the S.W. corner of said Lot. Thence N. 2° W. 88 chains 75 links to the N.W. corner of said Lot. Thence N. 88° E. on the N. line of said Lot 30 chains 67 links to the place of beginning, containing 118 acres and 93 hundredths of an acre of land.

The subdivision of said Lot commences on the E. side and numbers 1 to 5, with the width and area of each subdivision lot given. The lines being parallel with the lot lines. Lot No. 1, is 7 chains 50 links in width and contains 29.08 acres. No. 2 is 4 chains 50 links wide, and contains 17.45 acres. No. 3 is 4 chains 50 links wide, and contains 17.45 acres. No. 4 is 8 chains wide and contains 11.63 acres. No. 5 is 11 chains 17 links wide and contains 43.84 acres.



Sept. 13. 1847

C. Huntington Surveyor