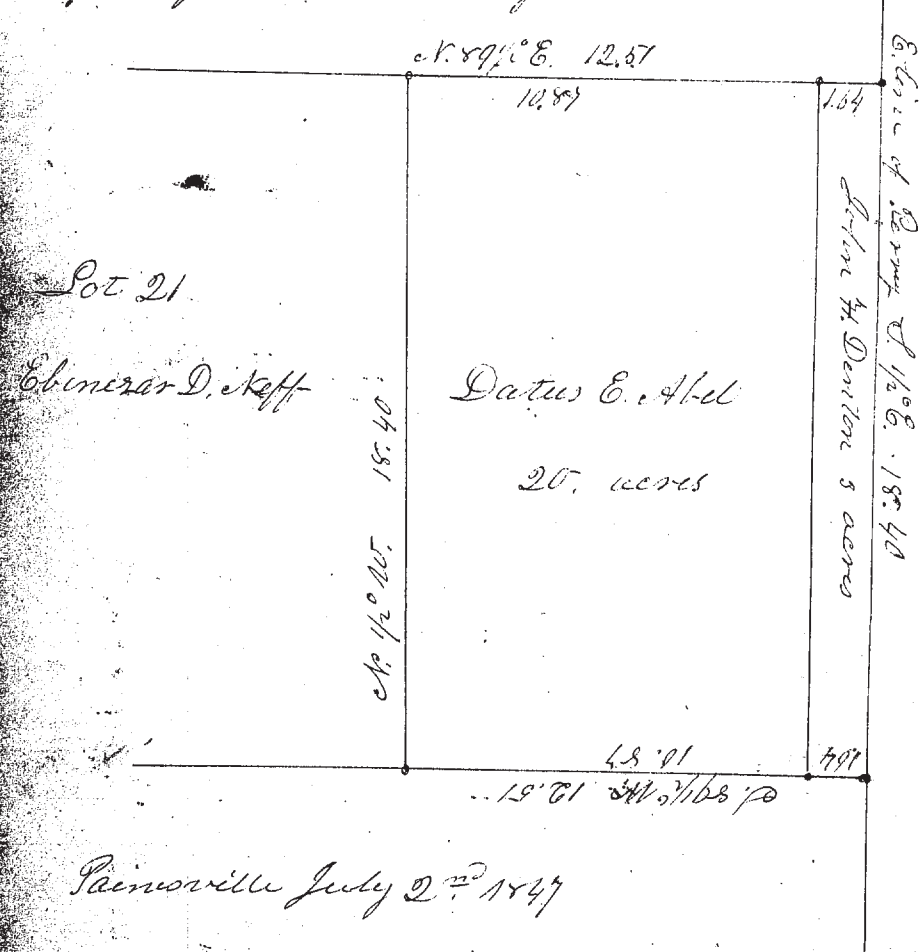


No. 29 } Survey of the east part of Lot No. 21 in
 Township No. 11. in the 7th Range - as follows -
 beginning at a stake in the N. E. corner of said Lot No
 21, on the East line of said Township - thence run S. 1/2^o E.
 18 chains 40 links, to a stake in the S. E. corner of said
 Lot - thence S. 89 1/2^o W. 12 chains 51 links, on the South line
 of said Lot - thence N. 1/2^o W. 18 chains 40 links to the N.
 line of said Lot - thence N. 89 1/2^o E. along the N. line of
 the Lot 12 chains 51 links to the place of beginning -
 containing 23 acres of land - viz. three acres on the
 East side of the Lot to John H. Denton - And twenty
 acres west of and adjoining said three acres to Datus
 E. Abel.

A plot of the above survey is hereto annexed.



Painoville July 2nd 1847

C. Huntington Surveyor
 Lake Co.

No. 30 } Survey of a part of Lot No. 12 Range 7 Le Roy, Wis.
 commencing at the N. E. corner of a lot of 60 acres owned by John
 Year Lin. and on the E. line of Lot No. 12 - thence S. 89 1/2^o W. along the north
 line of said Year Lot 22 chains to the N. W. corner of said Year Lot and
 to the west line of Lot No. 12 - thence N. 1/2^o W. along the West line of Lot No.
 12 - 19 chains to the center of Gurney creek, so called, from which a hem-
 lock tree four feet in diameter bears S. 15^o E. fifty links distant - thence
 following up the channel of Gurney creek S. 66 1/2^o E. 11 chains - thence S.
 80 1/2^o E. 3 chains 80 links - thence N. 78 1/2^o E. 2 chains - thence N. 58 1/2^o E. 2 chains
 50 links - thence S. 56^o E. 2 chains - thence S. 24 1/2^o E. 5 chains - thence S. 7^o E.
 2 chains 20 links to the E. line of Lot No. 12 - thence S. 1/2^o E. on the Lot line
 7 chains 03 links to the place of beginning - containing thirty three
 acres 1/4th of an acre of land -

Surveyed by request of John Year Lin

Aug - 9 - 1847

C. Huntington Surveyor
 of Lake Co.

