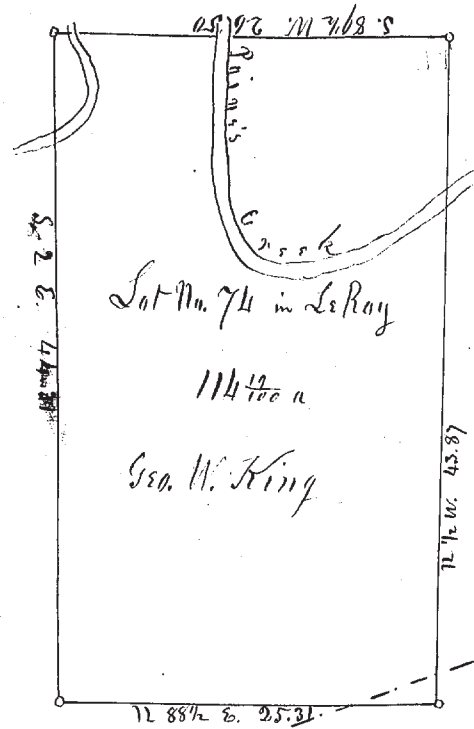


No. 259



Lot No. 74 in LeRay

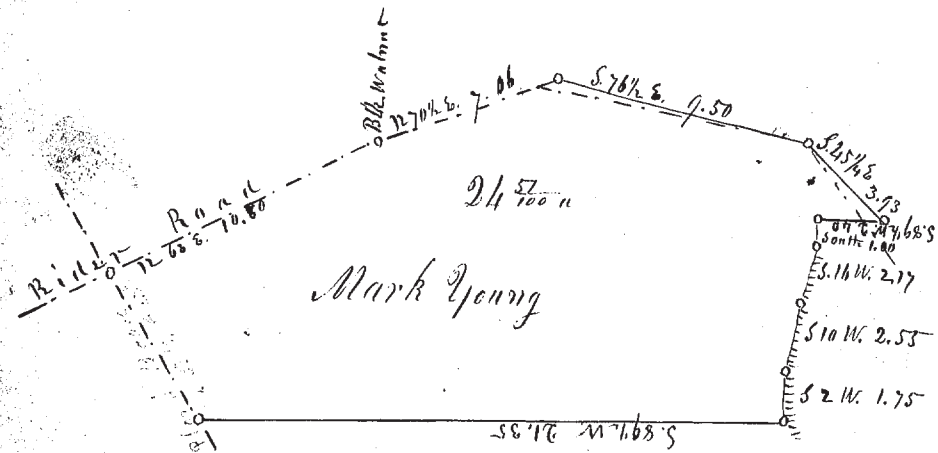
114 ¹²/₁₀₀ a

Geo. W. King

Oct. 31. 1853.

M. S. Harvey, Surveyor

No. 250



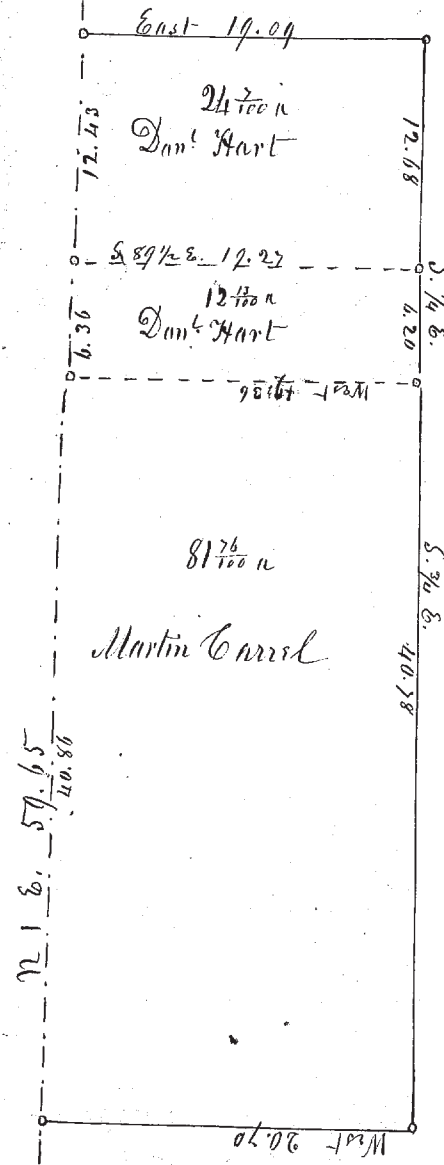
Mark Young

Part of Lot No. 12 and perhaps No. 14 in Tr. No. 2 in Parisville
Surveyed for Sisters H. Barnes & sold to Mark Young

Oct. 22. 1853 -

M. S. Harvey, Surveyor & Co.

No. 261



24 ⁷/₁₀₀ a
Danl Hart

12 ¹/₁₀₀ a
Danl Hart

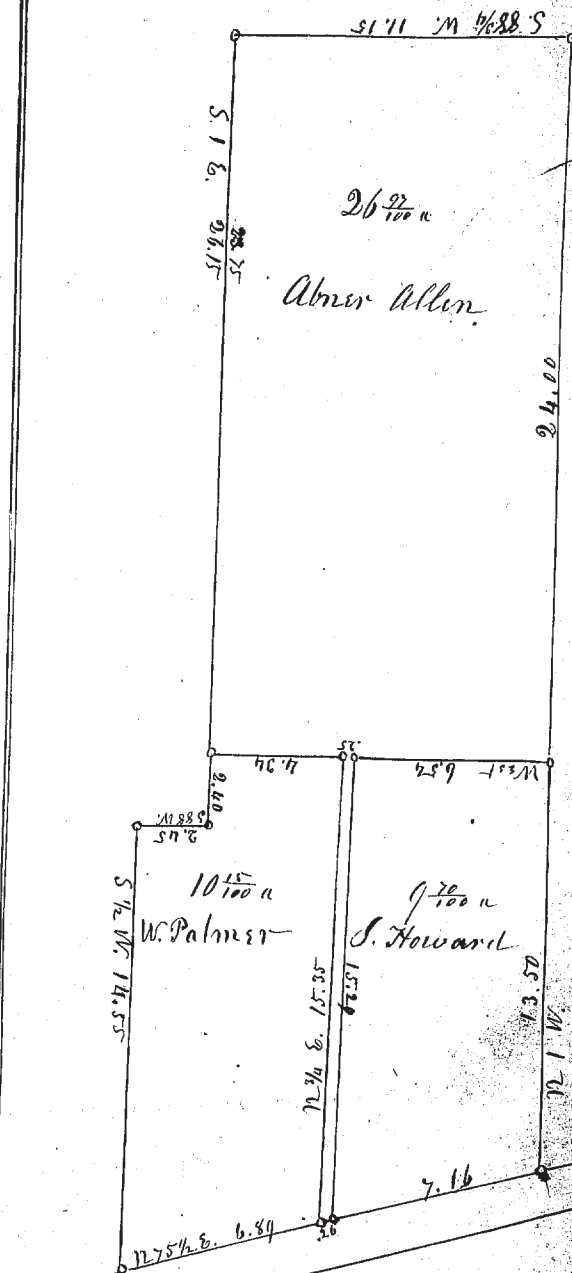
81 ⁷/₁₀₀ a
Martin Carral

Survey of the Parker Lot
in Mentor

Nov. 11. 1853

M. S. Harvey, Surveyor

No. 262



26 ⁹/₁₀₀ a
Abram Allen

10 ¹/₁₀₀ a
W. Palmer

9 ⁷/₁₀₀ a
S. Howard

Part of Tract No. 1 in Madison
Surveyed for S. B. Newcomb

Nov. 30. 1853

M. S. Harvey, Surveyor & Co.