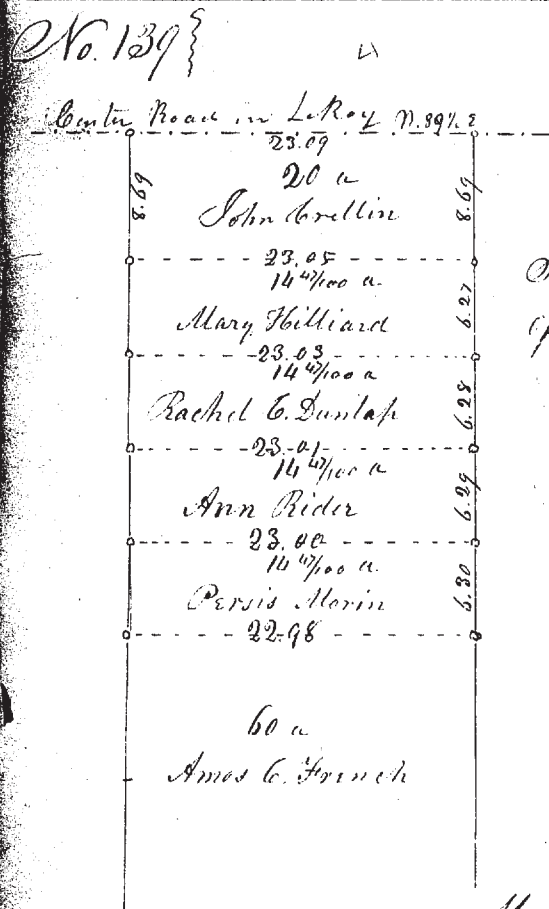


No. 138 Surveyed and divided Lot No 34 in LeRoy
 betwixt John Ransom & Eliakin Stockwell -
 East half to John Ransom - West half to Eliakin Stockwell
 Whole Lot from S. W. corner N 89 3/4 E. 23.93 1/2 to each 11.96 1/2
 N 1 1/2 E. 52.32
 S 89 3/4 W. 24.27 1/2 to each 12.13 1/2

W. line not measured
 Also set off 13 acres from the North end of J. Ransom's to
 Jefferson Brookway - beginning at the N. E. corner of said Lot
 thence S. 89 3/4 W. 12.13 1/2
 S. 1 1/4 W. 10.75
 N 89 3/4 E. 12.11
 N 1 1/2 E. 10.75 containing 13 acres -

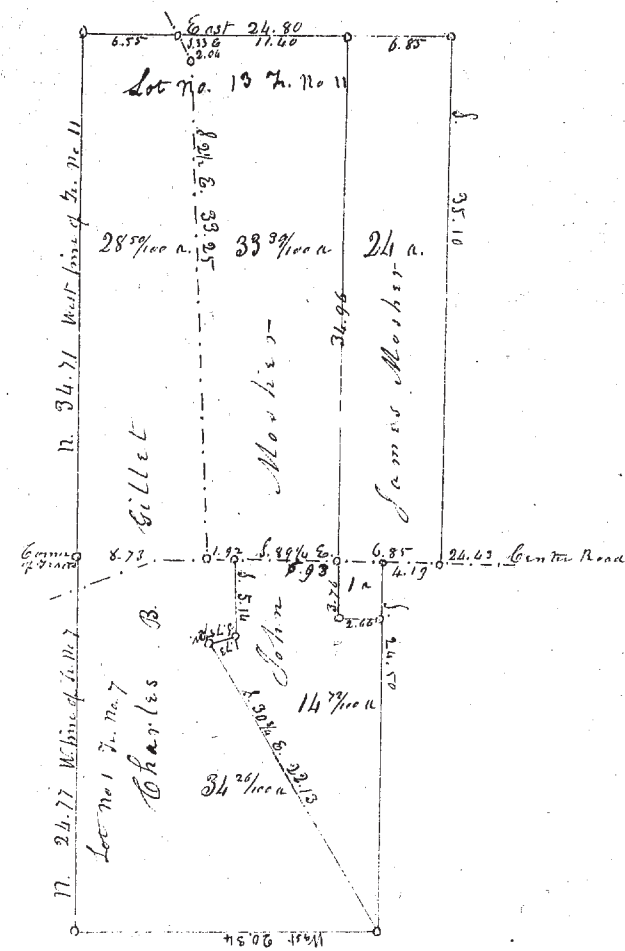
May 21. 1851 M. S. Harvey Surveyor Lake Co.



Subdivisions in the North part
 of Lot No. 27 in LeRoy

May 22. 1851
 M. S. Harvey Surveyor Lake Co.

No. 140



Survey and subdivision of the whole of Lot No 13 in S. No 11. and
 part of Lot No 1 in S. No. 7 Township 9 Range 10 (Willoughby) -
 Lot No. 13 contains 85 3/100 acres, & the part of Lot No 1. contains 49 7/100 a.
 The whole is subdivided and set off to the several names
 in the above plat according to courses and distances therein
 laid down to wit. to C. B. Gillet 62 7/100 acres - to John Moshier
 48 7/100 acres & to James Moshier 25 acres.

June 5. 1851

M. S. Harvey, Surveyor Lake Co.