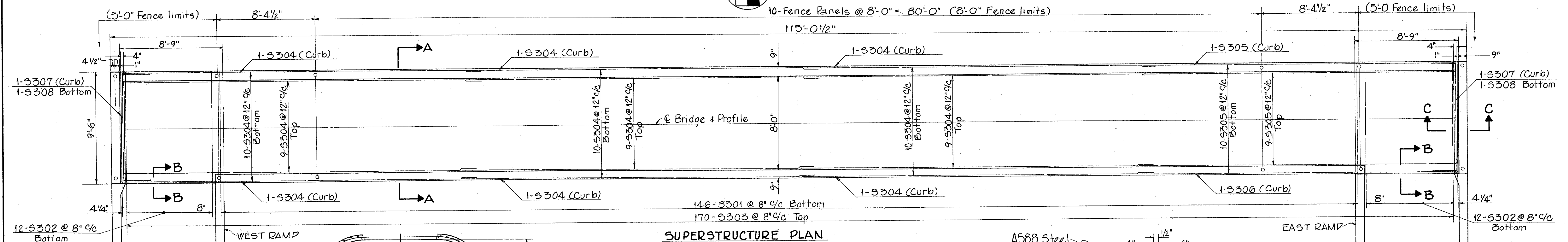
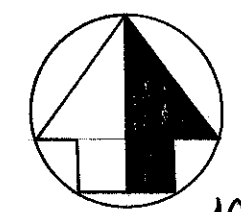
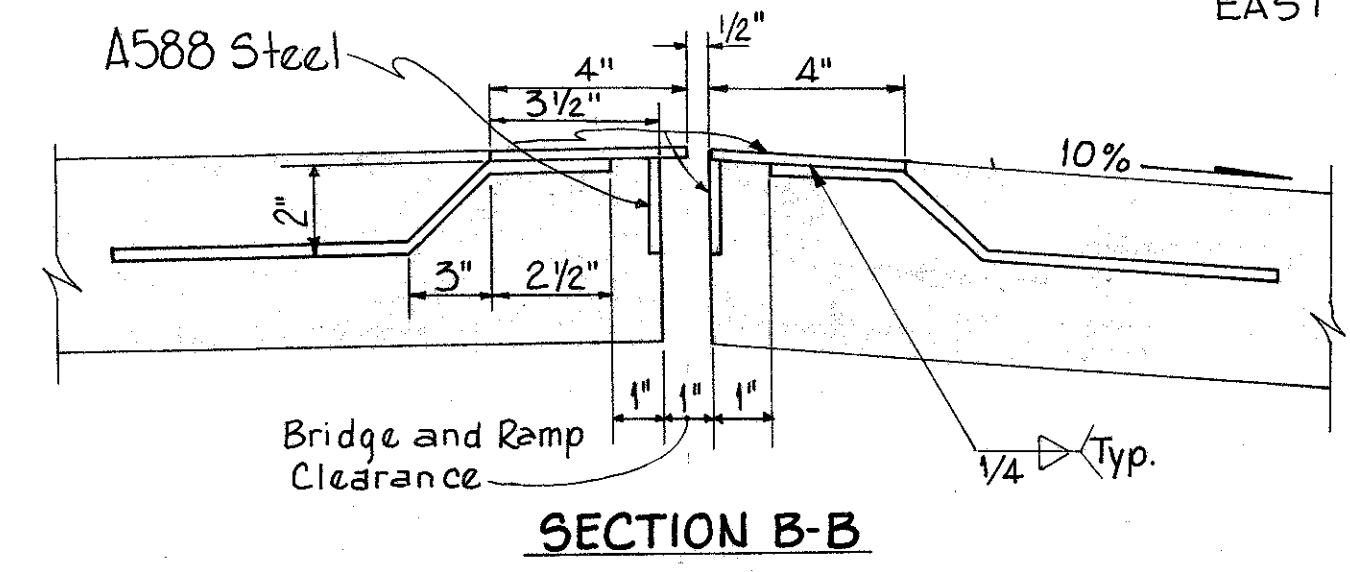


LAKE COUNTY
LAK-91-5.47

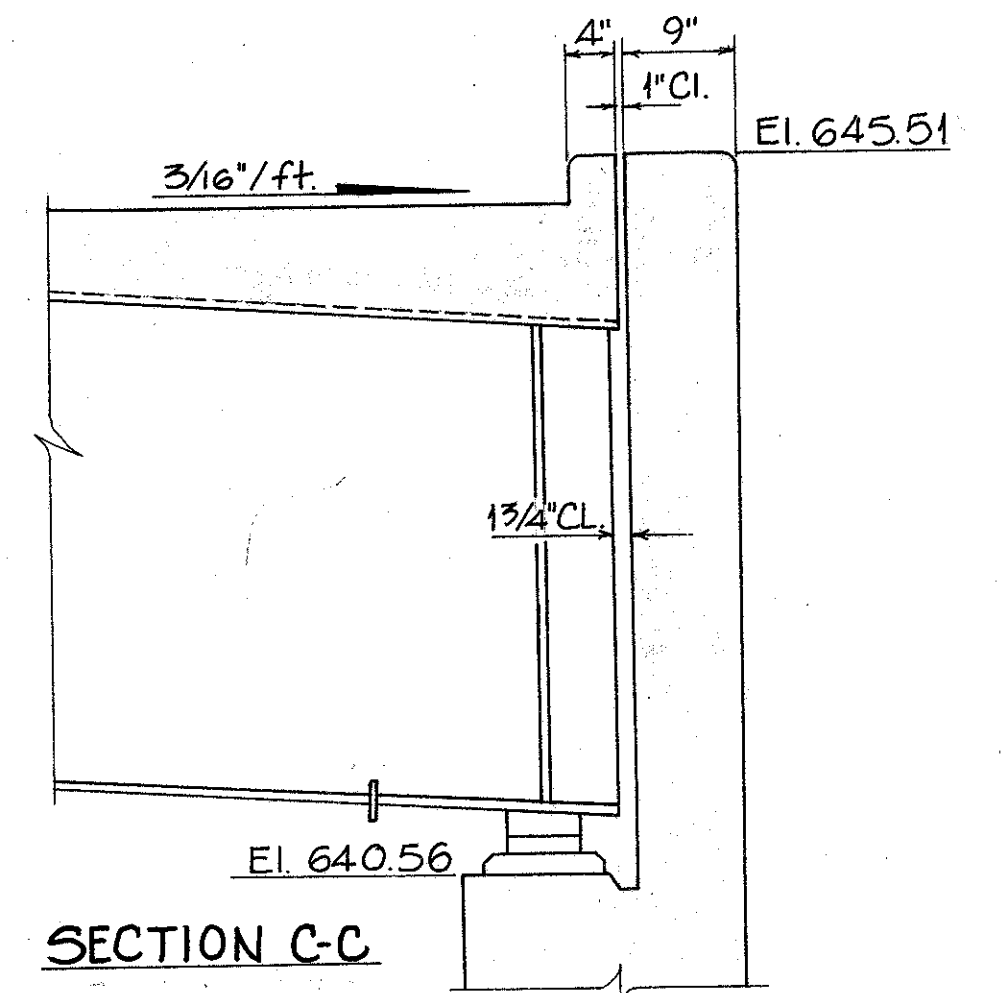


SUPERSTRUCTURE PLAN

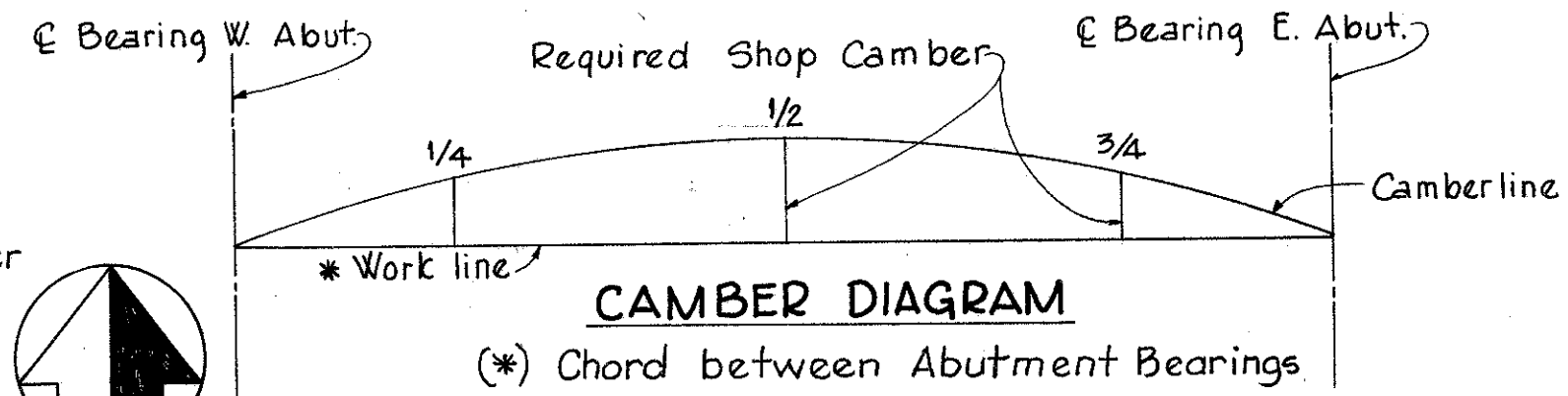
DEFLECTION AND CAMBER (in feet)	
LOCATION	1/4 pt. 1/2 pt. 3/4 pt.
Deflection due to weight of steel	0.749 1.051 0.749
Deflection due to remaining dead load	1.652 2.290 1.652
Adjustment required for vertical curve	1.1865 1.5820 1.1865
REQUIRED SHOP CAMBER	1'-5 1/8" 1'-11" 1'-5 1/8"



SECTION B-B

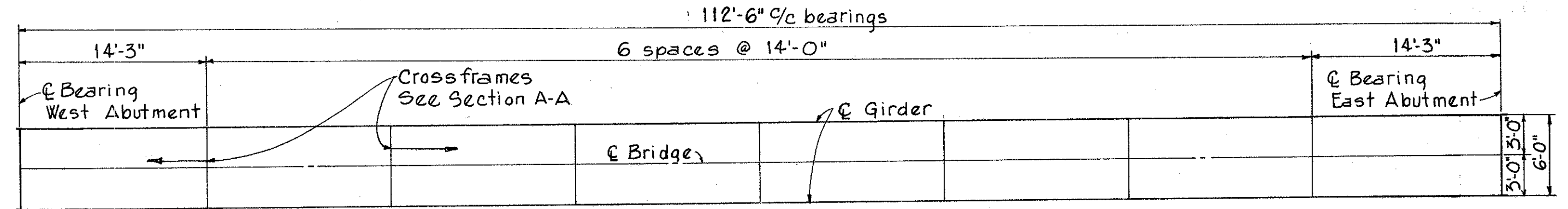


SECTION C-C

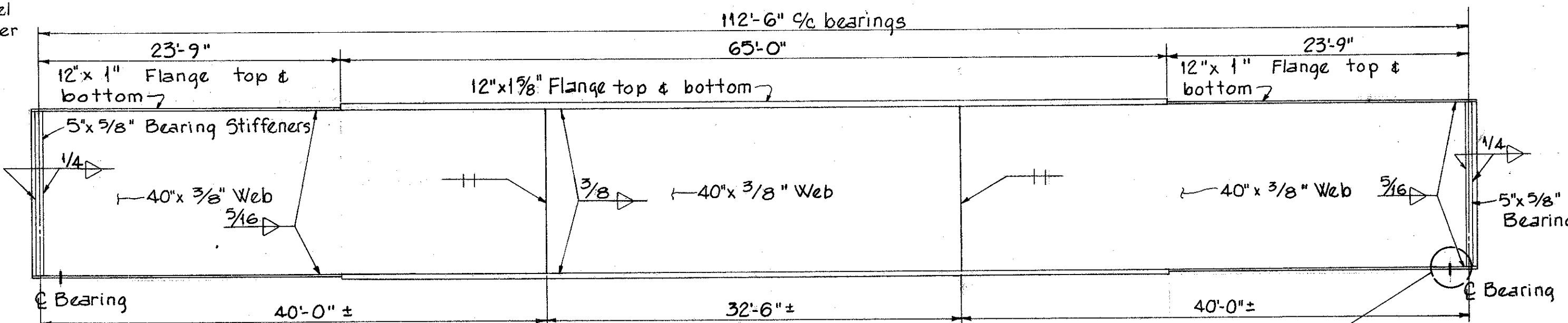


CAMBER DIAGRAM

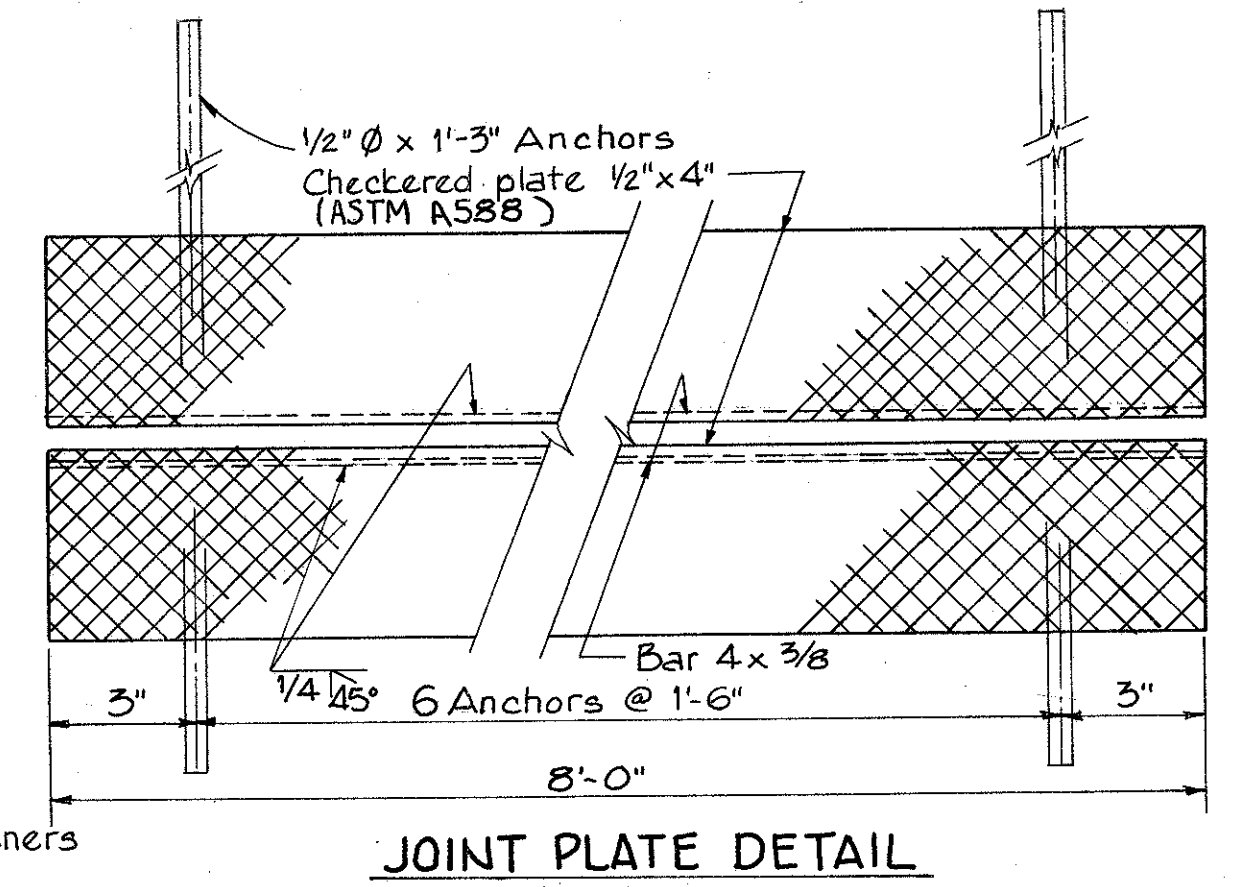
(* Chord between Abutment Bearings)



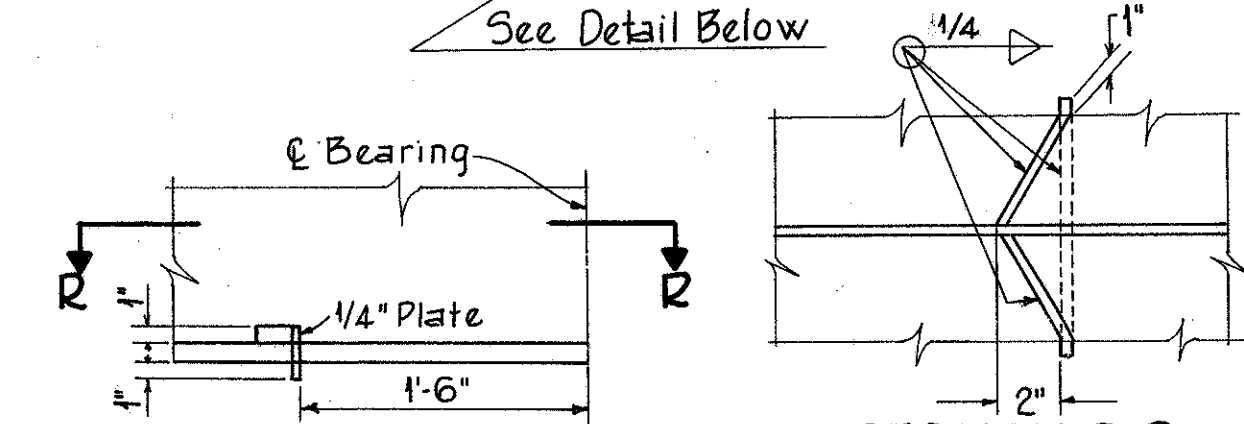
FRAMING PLAN



GIRDER ELEVATION

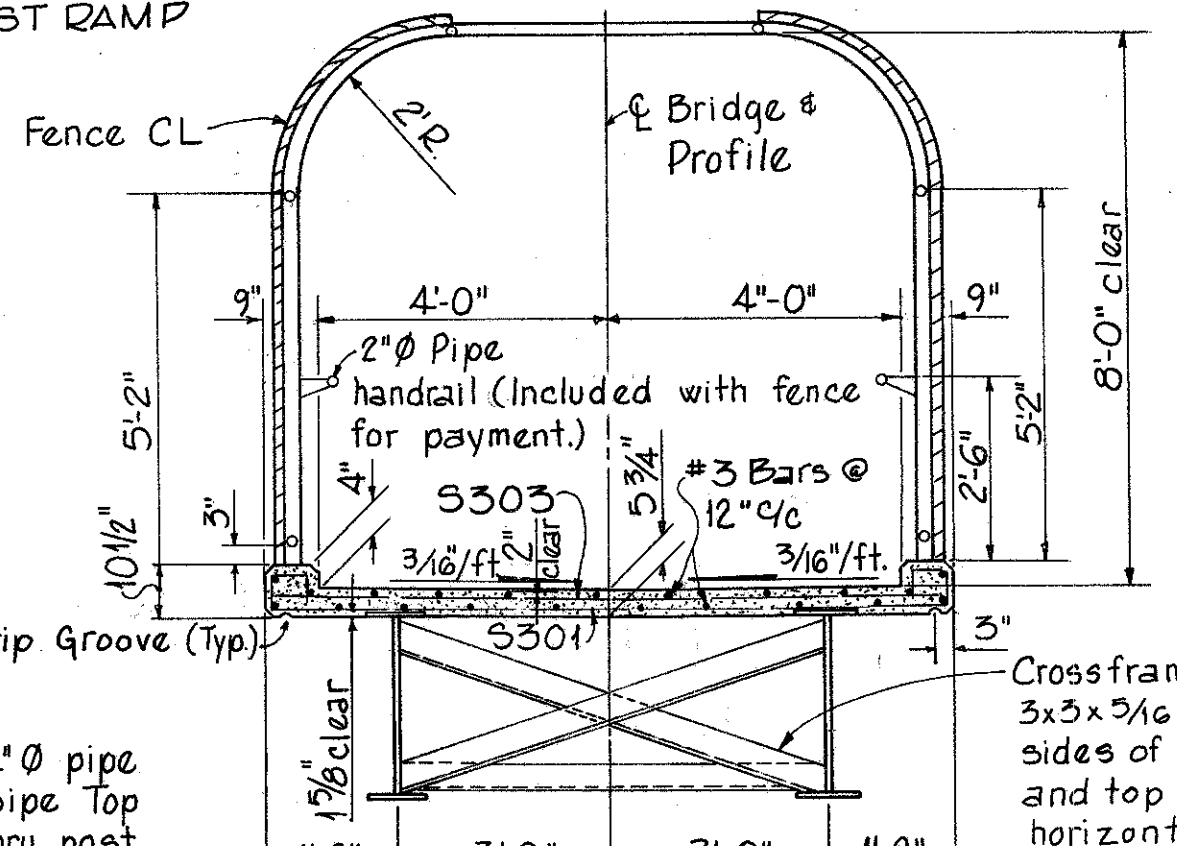


JOINT PLATE DETAIL

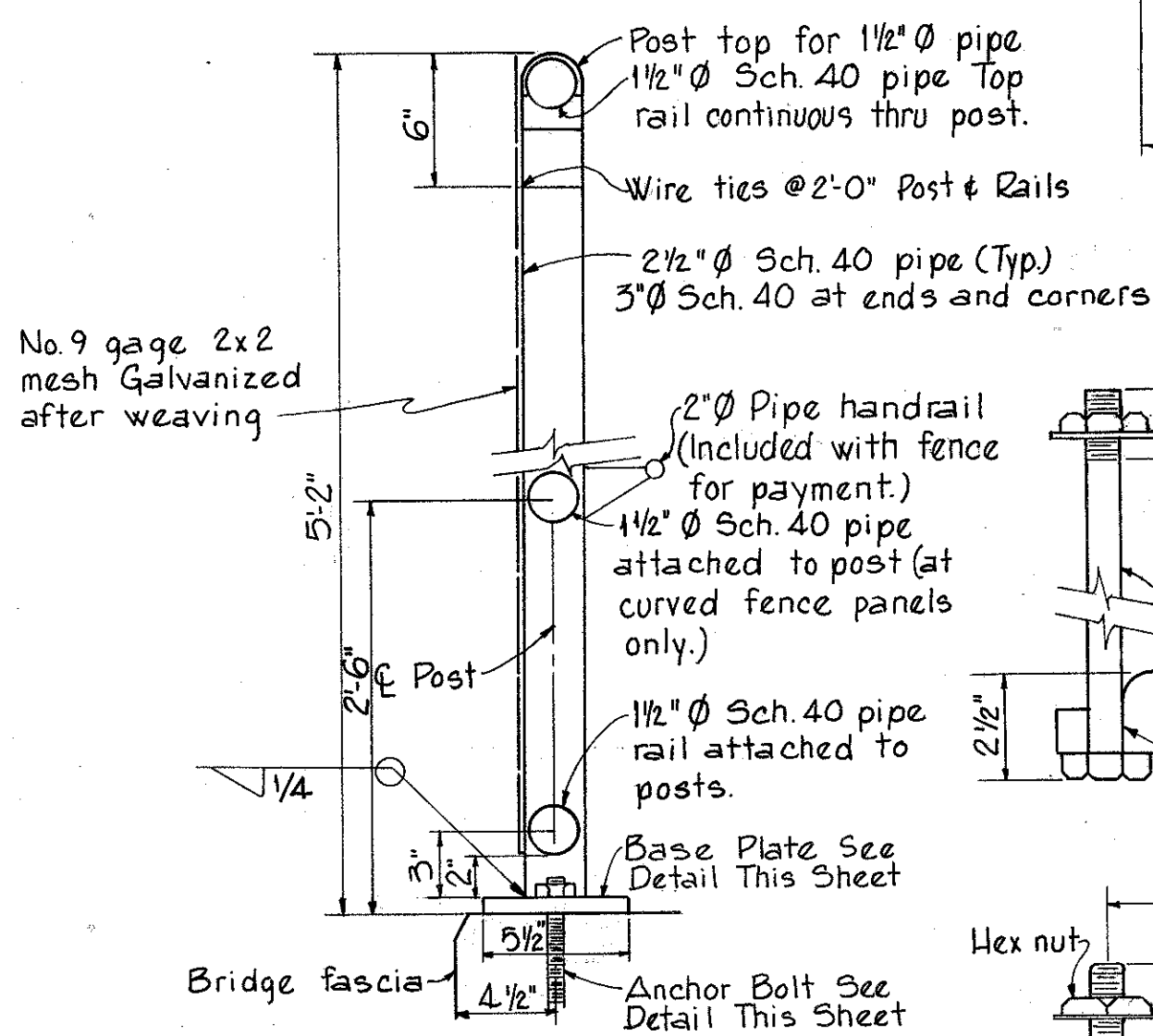


DRIP PLATE DETAILS

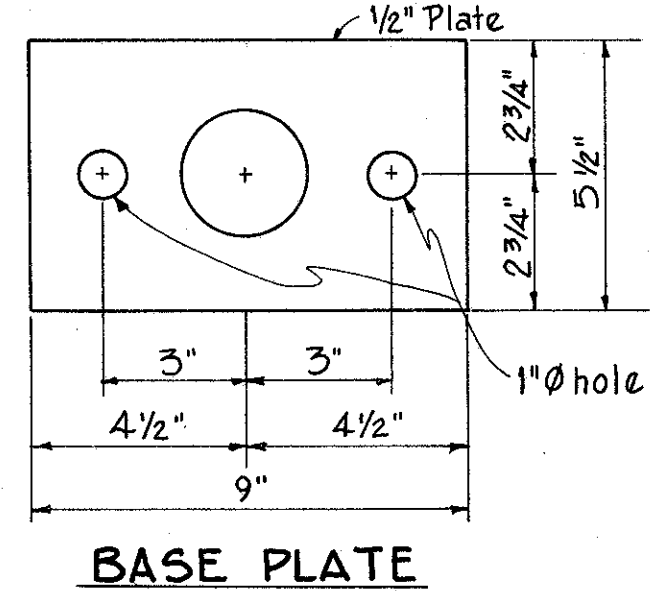
SECTION R-R



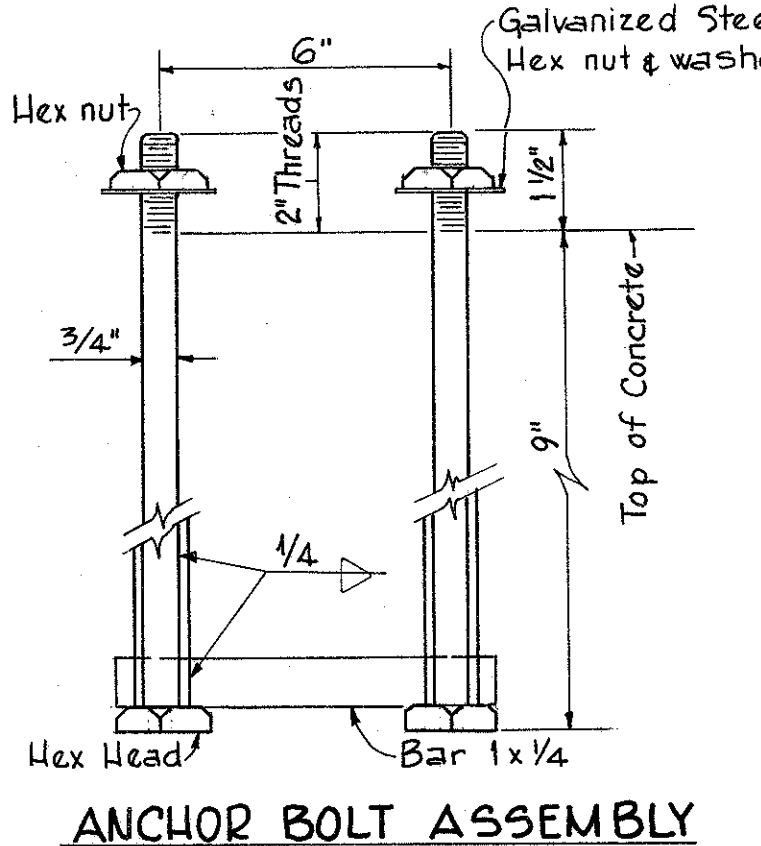
SECTION A-A



FENCE CL-POST



BASE PLATE



ANCHOR BOLT ASSEMBLY

BURGESS & NIPLE LIMITED — CONSULTING ENGINEERS
COLUMBUS, OHIO

SUPERSTRUCTURE DETAILS
BR. NO. LAK-91-0547
OVER
S.R. 91

LAKE COUNTY Sta 288+64.00

DESIGNED	DRAWN	TRACED	CHECKED	REVIEWED DATE	REVISED
M.I.G.	KDC	KDC	T.E.U.	2-23-75	3-12-75
				WCR 3-15-75	