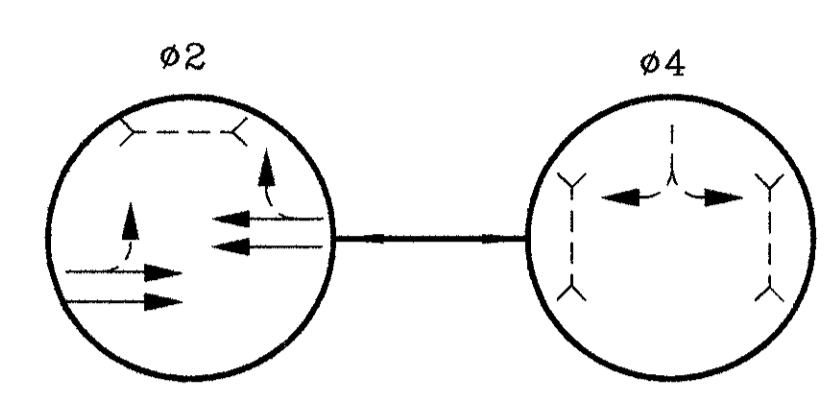
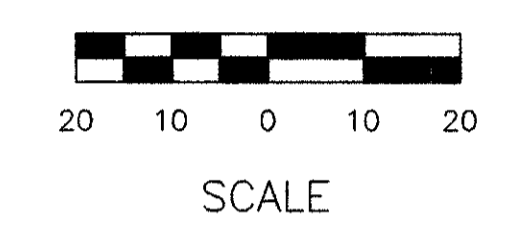
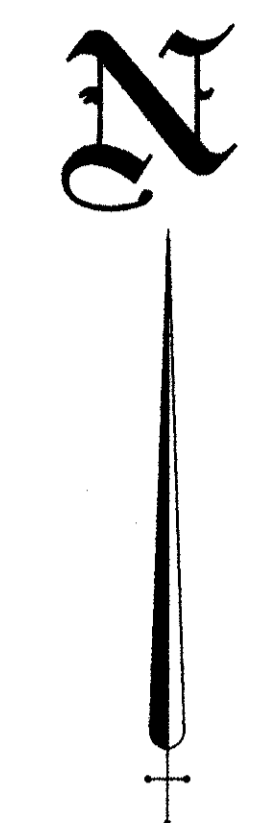
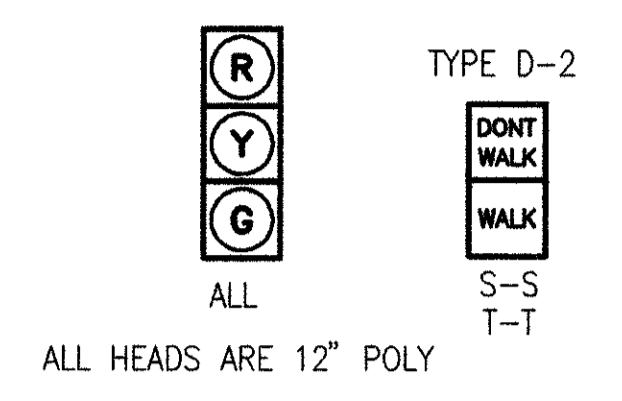


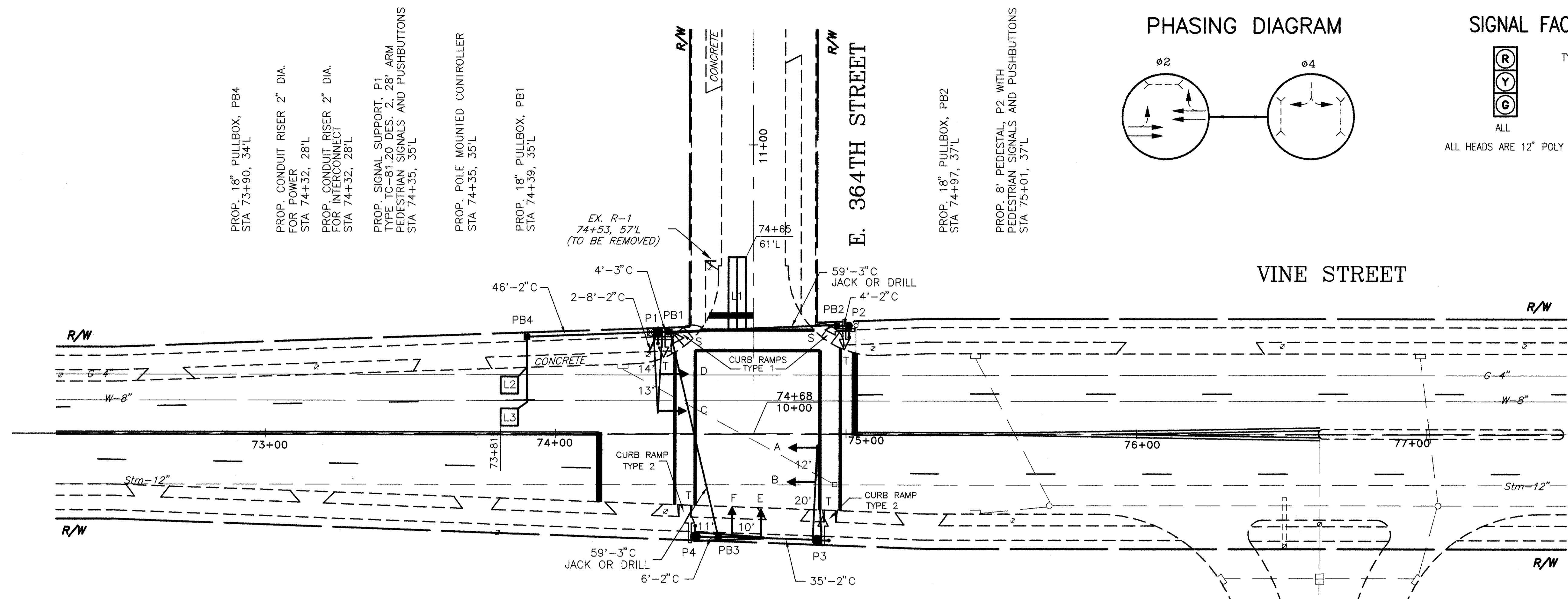
PHASING DIAGRAM



SIGNAL FACES



CITY OF WILLOUGHBY
CITY OF EASTLAKE



PROP. 18" PULLBOX, PB4
STA 73+90, 34'L

PROP. CONDUIT RISER 2" DIA.
FOR POWER
STA 74+32, 28'L

PROP. CONDUIT RISER 2" DIA.
FOR INTERCONNECT
STA 74+32, 28'L

PROP. SIGNAL SUPPORT, P1
TYPE TC-81.20 DES. 2, 28' ARM
PEDESTRIAN SIGNALS AND PUSHBUTTONS
STA 74+35, 35'L

PROP. POLE MOUNTED CONTROLLER
STA 74+35, 35'L

PROP. 18" PULLBOX, PB1
STA 74+39, 35'L

EX. R-1
74+53, 57'L
(TO BE REMOVED)

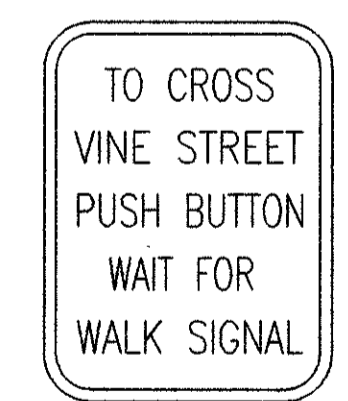
PROP. 18" PULLBOX, PB2
STA 74+97, 37'L

PROP. 8' PEDESTAL, P2 WITH
PEDESTRIAN SIGNALS AND PUSHBUTTONS
STA 75+01, 37'L

PED SIGNS



R-73A
9" x 12"
QTY = 2



R-73A
9" x 12"
QTY = 4

PROP. SIGNAL SUPPORT, P4
TYPE TC-81.20 DES. 1, 22' ARM
PEDESTRIAN SIGNAL AND PUSHBUTTON
STA 74+48, 36'R

PROP. 18" PULLBOX, PB3
STA 74+56, 36'R

PROP. SIGNAL SUPPORT, P3
TYPE TC-81.20 DES. 4, 33' ARM
PEDESTRIAN SIGNAL AND PUSHBUTTON
STA 74+91, 37'R

THE UNDERGROUND UTILITIES ARE SHOWN ACCORDING TO INFORMATION FURNISHED BY THE UTILITIES CONCERNED. THEIR ACCURACY IS NOT GUARANTEED, THEREFORE THEY SHOULD BE RECHECKED BEFORE UNDERGROUND CONSTRUCTION BEGINS.