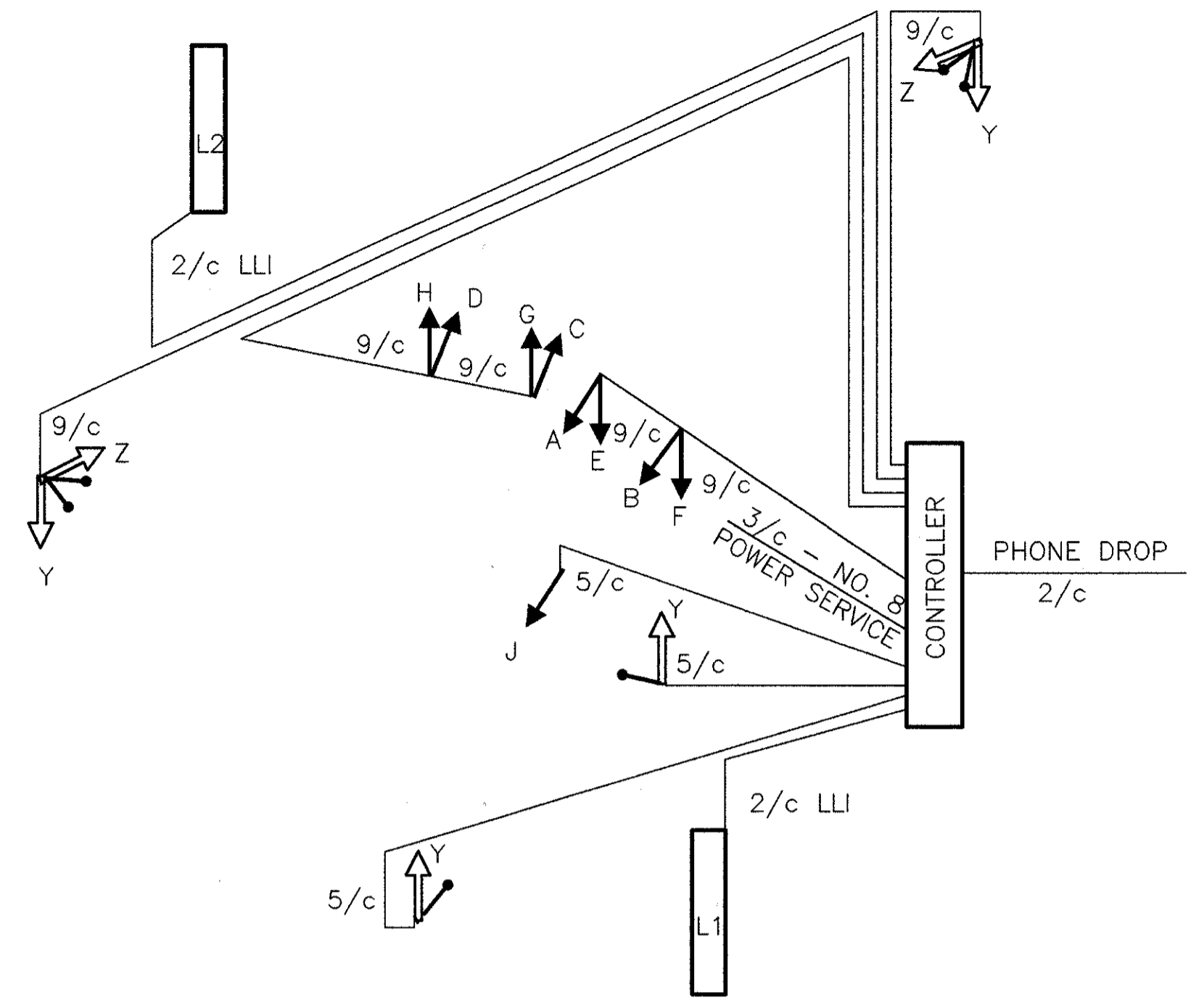


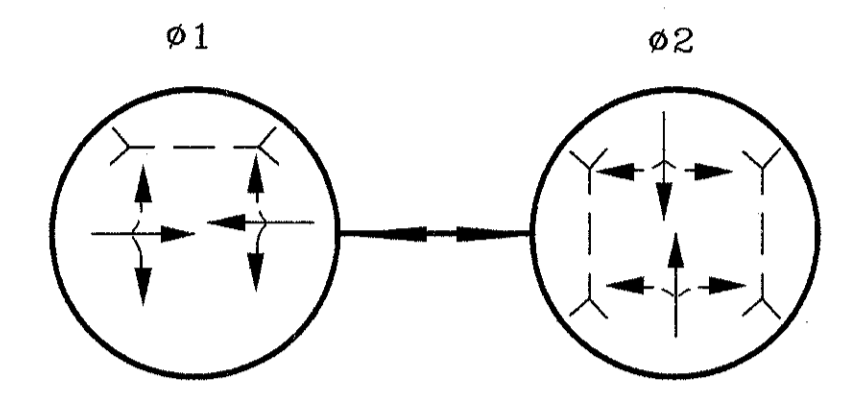
NOTES:
1. ALL ANGLES MEASURED CLOCKWISE.
2. BASE PLATE IS ORIENTED SQUARE TO MAST ARM A (LARGEST ARM) EVEN IF SUPPORT HAS TWO MAST ARMS.

SUPPORT NO.	SIGNAL SUPPORT		TC-81.20					TC-12.30					ORIENTATION ANGLES (DEG.) FROM MAST ARM "A"											
	POLE DESIGN NO.	ARM DESIGN NO.	POLE HEIGHT (FT.)	FOUNDATION		L (FT.)	L1 (FT.)	L2 (FT.)	L3 (FT.)	X1 (FT.)	MAST ARM A ANGLE (DEG.)	MAST ARM B	PEDESTRIAN SIGNALS	PEDESTRIAN PUSH BUTTONS	POWER SERVICE	CONTROLLER	VEHICULAR SIGNAL HEAD	HANDHOLE	CABLE ENTRANCE (12" FROM TOP)					
				STATION	OFFSET																			
P1	2		21'	40+45	23'R	24	13	23			330	150	150					180						
P2	PED		8'	39+62	37'R							120	120					180						
P3	4		21'	40+13	25'L	32	21	31			320	0	0					180						
P4	PED		8'	41+00	40'L							120	120					180						
P5	PED		8'	41+33	31'R							180	180					0	180					

ORIENTATION ANGLE CHART



WIRING DIAGRAM



PHASING DIAGRAM

SIGNAL HEAD	ø1				ø2				FLASH
	R/W	CLEAR	R/W	CLEAR	R/W	CLEAR	R/W	CLEAR	
A	G	G	Y	R	R	R	R	R	Y
B	G	G	Y	R	R	R	R	R	Y
C	G	G	Y	R	R	R	R	R	Y
D	G	G	Y	R	R	R	R	R	Y
E	R	R	R	R	G	G	Y	R	R
F	R	R	R	R	G	G	Y	R	R
G	R	R	R	R	G	G	Y	R	R
H	R	R	R	R	G	G	Y	R	R
J	R	R	R	R	G	G	Y	R	R
Y-Y	DW	DW	DW	DW	W	FDW	DW	DW	DARK
Z-Z	W	FDW	DW	DW	DW	DW	DW	DW	DARK

SIGNAL DISPLAY CHART

FUNCTION	ø1	ø2
MINIMUM GREEN	22	8
PED WALK	7	7
PED CLEARANCE	15	18
GREEN EXTENSION	3.0	3.0
MAXIMUM GREEN	35	35
YELLOW CLEARANCE	3.6	3.1
ALL RED CLEARANCE	1.4	1.4
RECALL	PED	NONE

SIGNAL TIMING

LOOP #	SIZE	# TURNS	MODE	DELAY	UNIT #	PHASE
L1	6' x 30'	2	PRESENCE	8	1	2
L2	6' x 30'	2	PRESENCE	8	2	2

LOOP DETECTOR CHART

ITEM	TOTAL	UNIT	DESCRIPTION
625	175	SQ FT	WALK REMOVED
625	175	SQ FT	4" CONCRETE WALK
625	6	EACH	GROUND ROD
625	5	EACH	PULLBOX, 18", AS PER PLAN
625	92	LIN FT	CONDUIT, 2", 713.04
625	16	LIN FT	CONDUIT, 3", 713.04
625	208	LIN FT	CONDUIT, JACKED OR DRILLED UNDER PAVEMENT, 3"
625	93	LIN FT	TRENCH
625	15	LIN FT	TRENCH IN PAVED AREA, TYPE "B"
632	1	EACH	VEHICULAR SIGNAL HEAD, 3 SECT., 12" LENS, 1-WAY, AS PER PLAN
632	4	EACH	VEHICULAR SIGNAL HEAD, 3 SECT., 12" LENS, 2-WAY, AS PER PLAN
632	6	EACH	PEDESTRIAN SIGNAL HEAD, TYPE "D-2"
632	6	EACH	PEDESTRIAN PUSHBUTTON
632	2	EACH	LOOP DETECTOR UNIT, DELAY AND EXTENSION TYPE, AS PER PLAN
632	6.41	CU YD	CONCRETE FOR ANCHOR BASE FOUNDATIONS
632	1	EACH	SIGNAL SUPPORT, TYPE TC-81.20, DES. 2, WITH 24' ARM
632	1	EACH	SIGNAL SUPPORT, TYPE TC-81.20, DES. 4, WITH 32' ARM
632	3	EACH	PEDESTAL, 8', TRANSFORMER BASE
632	2	EACH	CABLE SUPPORT ASSEMBLY
632	157	LIN FT	LOOP DETECTOR PAVEMENT CUTTING
632	245	LIN FT	SIGNAL CABLE, 5 CONDUCTOR, NO. 14 AWG
632	838	LIN FT	SIGNAL CABLE, 9 CONDUCTOR, NO. 14 AWG
632	364	LIN FT	LOOP DETECTOR WIRE, TYPE E
632	210	LIN FT	LOOP DETECTOR LEAD-IN CABLE
632	55	LIN FT	POWER CABLE, 3 CONDUCTOR, NO. 8 AWG
632	1	EACH	CONDUIT RISER, 2" DIAM.
632	5	EACH	COVERING OF VEHICULAR SIGNAL HEAD
632	1	EACH	REMOVAL OF TRAFFIC SIGNAL INSTALLATION, AS PER PLAN
632	1	EACH	PHONE DROP
633	8.33	SQ FT	CONTROLLER WORK PAD
633	.99	CU YD	CONCRETE FOR CABINET FOUNDATION
633	1	EACH	CONTROLLER, ACTUATED, 2 PHASE, SOLID-STATE DIGITAL, MICROPROCESSOR, AS PER PLAN
633	1	EACH	CONTROLLER, MASTER, SOLID-STATE DIGITAL, MICROPROCESSOR, TRAFFIC RESPONSIVE, AS PER PLAN
642	235	LIN FT	CROSSWALK LINE, TYPE 2

REVISED 4-26-94