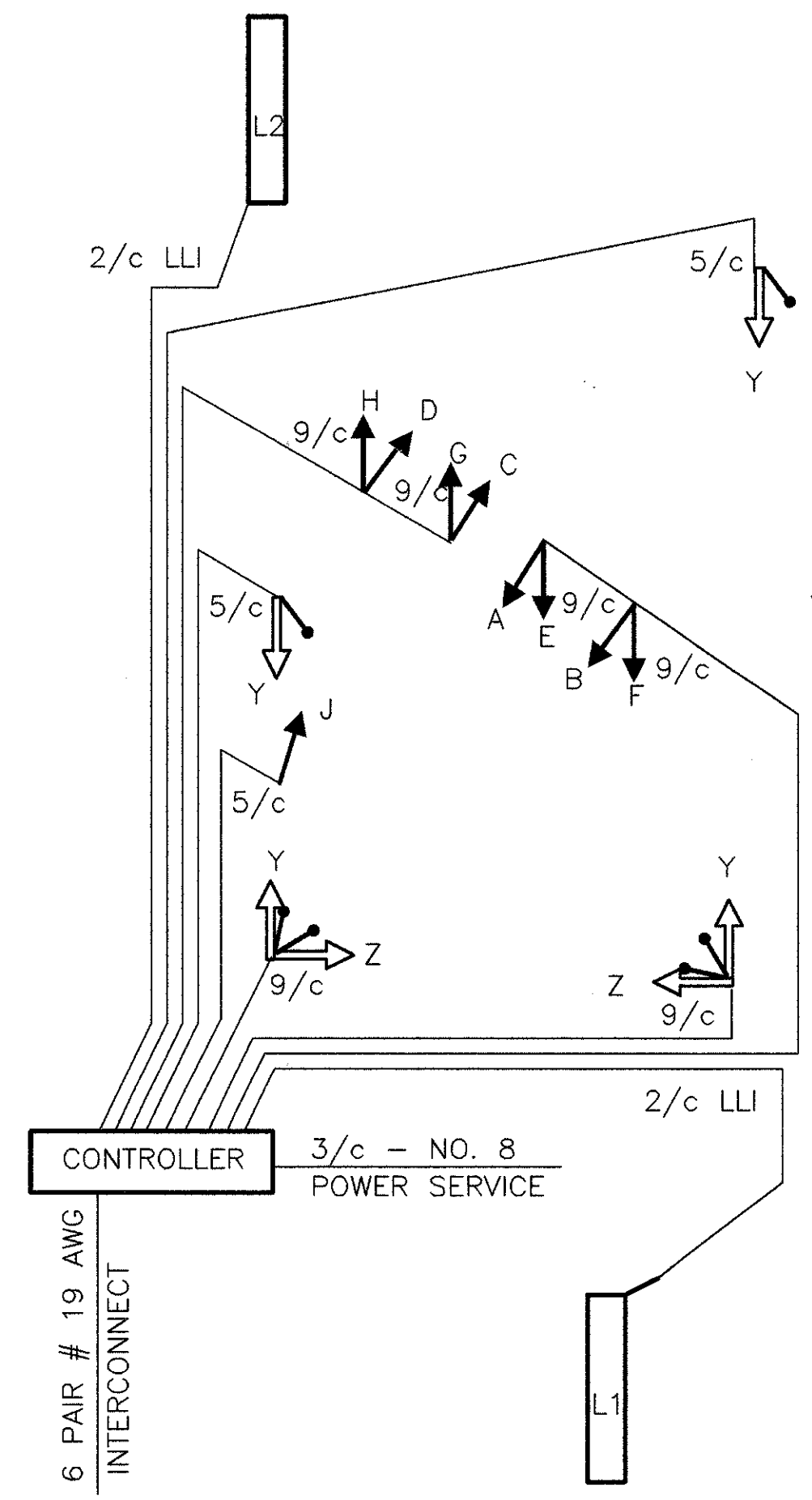


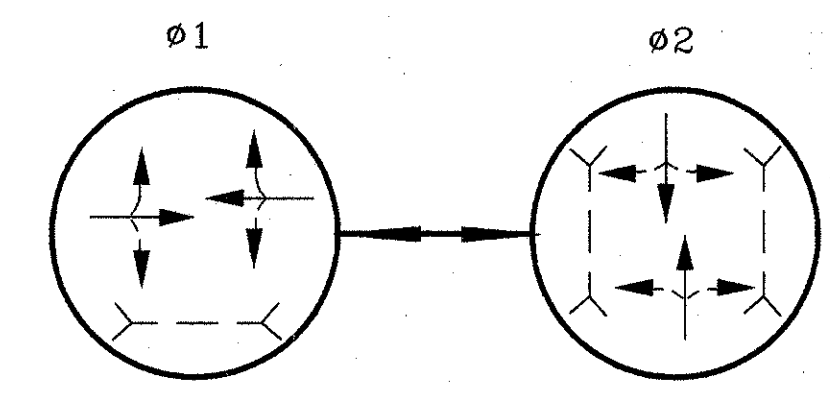
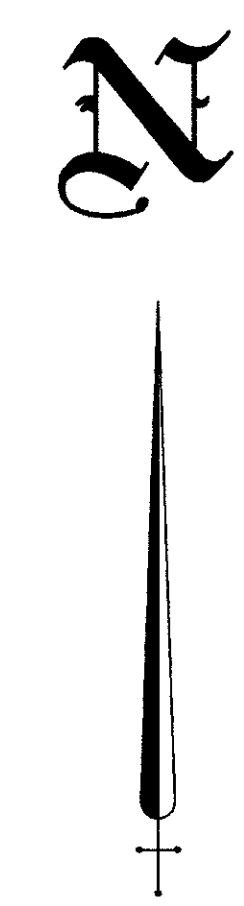
NOTES:
1. ALL ANGLES MEASURED CLOCKWISE.
2. BASE PLATE IS ORIENTED SQUARE TO MAST ARM A (LARGEST ARM) EVEN IF SUPPORT HAS TWO MAST ARMS.

SUPPORT NO.	SIGNAL SUPPORT						ORIENTATION ANGLES (DEG.) FROM MAST ARM "A"														
	POLE DESIGN NO.		ARM DESIGN NO.	POLE HEIGHT (FT)	FOUNDATION		L	L 1	L 2	L 3	X 1	MAST ARM A ANGLE (DEG.)	MAST ARM B	PEDESTRIAN SIGNALS	PEDESTRIAN PUSH BUTTONS	POWER SERVICE	CONTROLLER	VEHICULAR SIGNAL HEAD	HANDHOLE	CABLE ENTRANCE (12" FROM TOP)	
	TC-81.20	TC-12.30			STATION	OFFSET															
P1	4		4	21'	100+18	32'F	34	23	33			330	0	210	0					180	
P2	PED			8'	99+38	32'F							135	135						180	
P3	11		11	21'	99+82	33'L	35	24	34			330	300	300						180	
P4	PED			8'	100+53	39'L							300	300						180	
P5	PED			8'	100+02	32'L														0	180

ORIENTATION ANGLE CHART



WIRING DIAGRAM



PHASING DIAGRAM

FUNCTION	Ø1	Ø2
MINIMUM GREEN	17	8
PED WALK	7	7
PED CLEARANCE	10	15
GREEN EXTENSION	3.0	3.0
MAXIMUM GREEN	47	40
YELLOW CLEARANCE	3.6	3.4
ALL RED CLEARANCE	1.0	1.9
RECALL	PED	NONE

SIGNAL TIMING

SIGNAL HEAD	Ø1				Ø2				FLASH
	R/W	CLEAR	R/W	CLEAR	R/W	CLEAR	R/W	CLEAR	
A	G	G	Y	R	R	R	R	R	Y
B	G	G	Y	R	R	R	R	R	Y
C	G	G	Y	R	R	R	R	R	Y
D	G	G	Y	R	R	R	R	R	Y
E	R	R	R	R	G	G	Y	R	R
F	R	R	R	R	G	G	Y	R	R
G	R	R	R	R	G	G	Y	R	R
H	R	R	R	R	G	G	Y	R	R
J	R	R	R	R	G	G	Y	R	R
Y-Y	DW	DW	DW	DW	W	FDW	DW	DW	DARK
Z-Z	W	FDW	DW	DW	DW	DW	DW	DW	DARK

SIGNAL DISPLAY CHART

NOTES:
1. PHASE SPLITS SHALL INCLUDE ALL GREEN PLUS YELLOW & ALL RED
2. PERMISSIVES SHALL START AT THE ZERO POINT OF THE CYCLE
3. OFFSETS SHALL BE REFERENCED TO THE BEGINNING OF PHASE 1 YELLOW

	DIAL 1	DIAL 2	DIAL 3
CYCLE LENGTH	75 SEC	100 SEC	85 SEC
PHASE 1 SPLIT	64.1 %	51.3 %	72.5 %
PHASE 2 SPLIT	35.9 %	48.7 %	27.5 %
PERMISSIVE	15 %	15 %	15 %
OFFSET	0	0	0
TIME OF DAY SCHEDULE	ALL OTHER TIMES	6:30AM TO 2:30PM 6:30PM TO 9:00PM MON-SAT	2:30PM TO 6:30PM MON-SAT

COORDINATION TIMING

LOOP #	SIZE	# TURNS	MODE	DELAY	UNIT #	PHASE
L1	6' x 30'	2	PRESENCE	8	1	2
L2	6' x 30'	2	PRESENCE	8	2	2

LOOP DETECTOR CHART

100% CITY

ITEM	TOTAL	UNIT	DESCRIPTION
202	170	SQ FT	WALK REMOVED
202	7	LIN FT	CURB REMOVED
608	1	EACH	CURB RAMP, TYPE 2
608	218	SQ FT	4" CONCRETE WALK
625	6	EACH	GROUND ROD
625	5	EACH	PULLBOX, 18", AS PER PLAN
625	128	LIN FT	CONDUIT, 2", 713.04
625	211	LIN FT	CONDUIT, JACKED OR DRILLED UNDER PAVEMENT, 3"
625	128	LIN FT	TRENCH
632	1	EACH	VEHICULAR SIGNAL HEAD, 3 SECT., 12" LENS, 1-WAY, AS PER PLAN
632	4	EACH	VEHICULAR SIGNAL HEAD, 3 SECT., 12" LENS, 2-WAY, AS PER PLAN
632	6	EACH	PEDESTRIAN SIGNAL HEAD, TYPE "D-2"
632	6	EACH	PEDESTRIAN PUSHBUTTON
632	2	EACH	LOOP DETECTOR UNIT, DELAY AND EXTENSION TYPE, AS PER PLAN
632	6.41	CU YD	CONCRETE FOR ANCHOR BASE FOUNDATION
632	1	EACH	SIGNAL SUPPORT, TYPE TC-81.20, DES. 4, WITH 34' ARM
632	1	EACH	SIGNAL SUPPORT, TYPE TC-81.20, DES. 11, WITH 35' ARM
632	3	EACH	PEDESTAL, 8', TRANSFORMER BASE
632	2	EACH	CABLE SUPPORT ASSEMBLY
632	176	LIN FT	LOOP DETECTOR PAVEMENT CUTTING
632	514	LIN FT	SIGNAL CABLE, 5 CONDUCTOR, NO. 14 AWG
632	627	LIN FT	SIGNAL CABLE, 9 CONDUCTOR, NO. 14 AWG
632	428	LIN FT	LOOP DETECTOR WIRE, TYPE E
632	263	LIN FT	LOOP DETECTOR LEAD-IN CABLE
632	53	LIN FT	POWER CABLE, 3 CONDUCTOR, NO. 8 AWG
632	1	EACH	CONDUIT RISER, 2" DIAM.
632	5	EACH	COVERING OF VEHICULAR SIGNAL HEAD
632	1	EACH	REMOVAL OF TRAFFIC SIGNAL INSTALLATION, AS PER PLAN
633	8.33	SQ FT	CONTROLLER WORK PAD
633	.99	CU YD	CONCRETE FOR CABINET FOUNDATION
633	1	EACH	CONTROLLER, ACTUATED, 2 PHASE, SOLID-STATE DIGITAL, MICROPROCESSOR, AS PER PLAN

REVISED 4-26-91