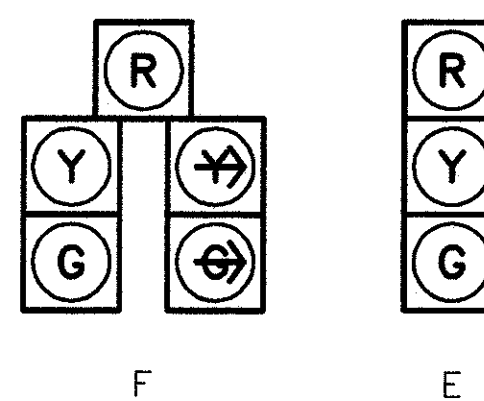


OPTICALLY PROGRAMED



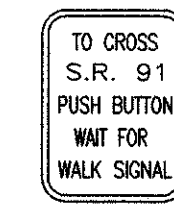
B, C, D, G,
H, J, K, L & M

ALL HEADS ARE 12" POLY

TYPE "D-2"



Y - Y
Z - Z



R-73A-9
QTY. = 2

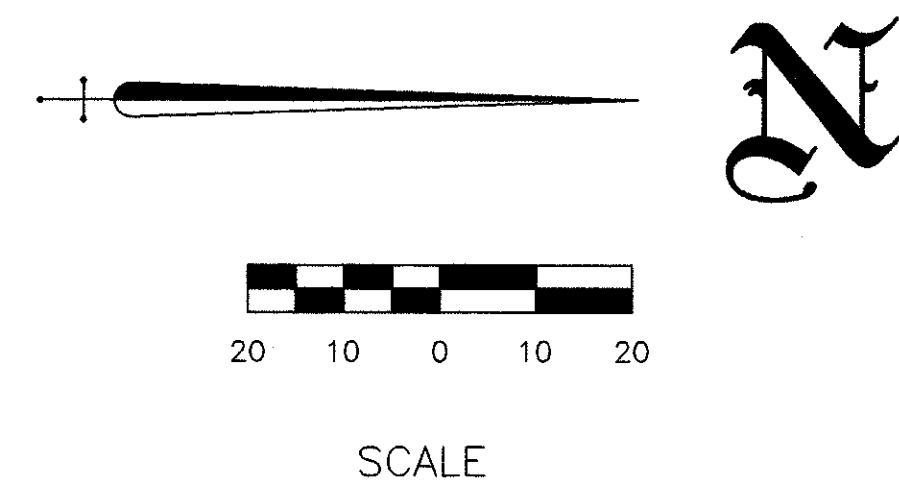


R-73A-9
QTY. = 2

PED SIGNS

PROP. SIGNAL SUPPORT, P3;
TYPE TC-81.20 DES. 4 WITH
MAST ARMS
TYPE TC-81.20 DES. 3, 32', AND
TYPE TC-81.20 DES. 1, 24',
STA 339+72, 47'L

PROP. 18" PULLBOX, PB5
STA 339+83, 44'L

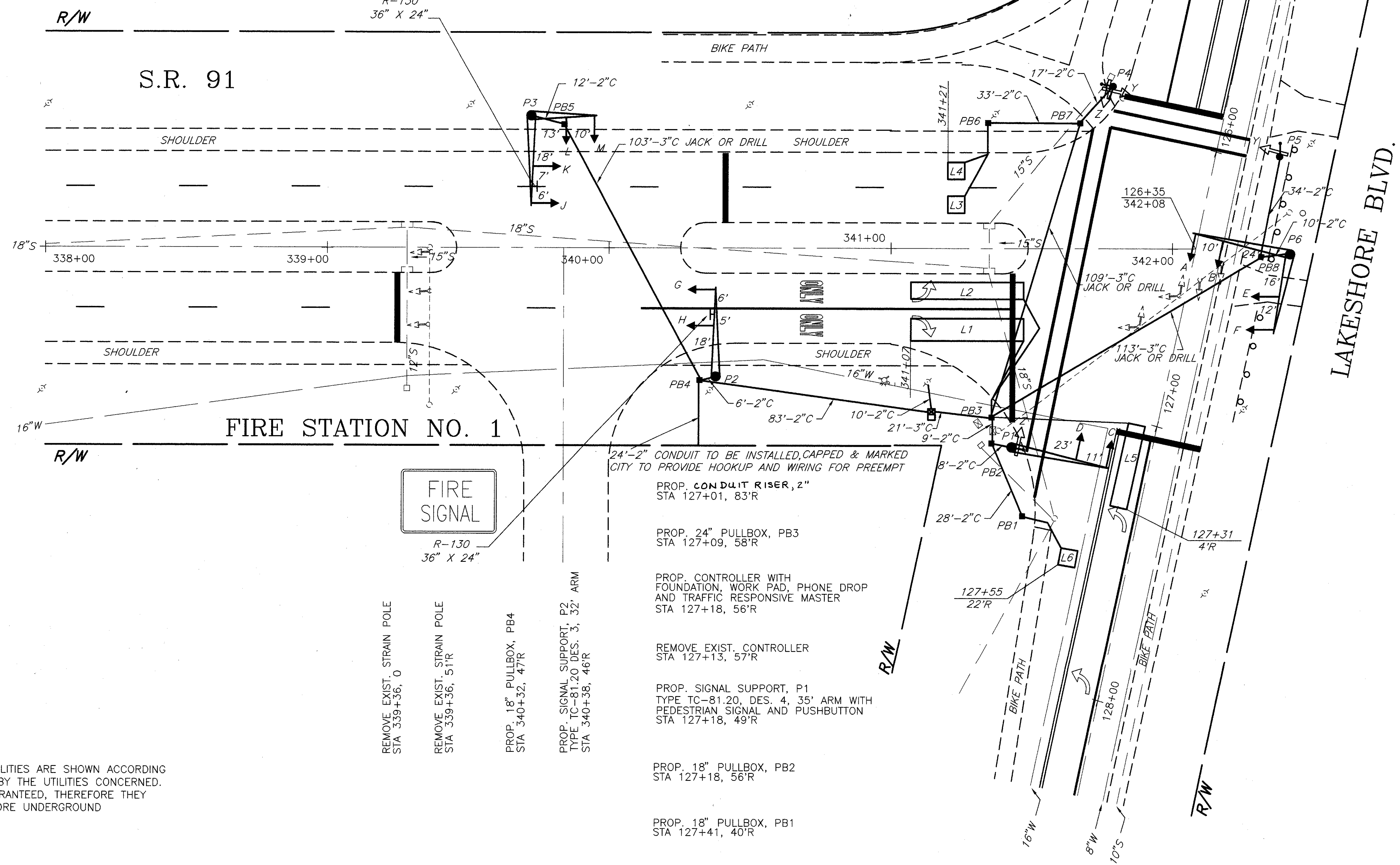


NOTE:
SIGNALS E & F SHALL BE PROGRAMED TO BE SEEN
225' FROM THE HEADS

SIGNALS



R-130
36" X 24"



PROP. 8' PEDESTAL, P5 WITH
PEDESTRIAN SIGNAL AND PUSHBUTTON
STA 125+97, 22'L

PROP. SIGNAL SUPPORT P6
TYPE TC-81.20 DES. 12 POLE WITH
MAST ARMS TYPE TC-81.20 DES. 4, 35'
AND TYPE TC-81.20 DES. 3, 29'
STA 126+30, 33'L

PROP. 18" PULLBOX, PB8
STA 126+33, 23'L

24'-2" CONDUIT TO BE INSTALLED, CAPPED & MARKED
CITY TO PROVIDE HOOKUP AND WIRING FOR PREEMPT

PROP. CONDUIT RISER, 2"
STA 127+01, 83'R

PROP. 24" PULLBOX, PB3
STA 127+09, 58'R

PROP. CONTROLLER WITH
FOUNDATION, WORK PAD, PHONE DROP
AND TRAFFIC RESPONSIVE MASTER
STA 127+18, 56'R

REMOVE EXIST. CONTROLLER
STA 127+13, 57'R

PROP. SIGNAL SUPPORT, P1
TYPE TC-81.20, DES. 4, 35' ARM WITH
PEDESTRIAN SIGNAL AND PUSHBUTTON
STA 127+18, 49'R

PROP. 18" PULLBOX, PB2
STA 127+18, 56'R

PROP. 18" PULLBOX, PB1
STA 127+41, 40'R

REMOVE EXIST. STRAIN POLE
STA 339+36, 0

REMOVE EXIST. STRAIN POLE
STA 339+36, 51'R

PROP. 18" PULLBOX, PB4
STA 340+32, 47'R

PROP. SIGNAL SUPPORT, P2
TYPE TC-81.20 DES. 3, 32' ARM
STA 340+38, 46'R

THE UNDERGROUND UTILITIES ARE SHOWN ACCORDING
TO INFORMATION FURNISHED BY THE UTILITIES CONCERNED.
THEIR ACCURACY IS NOT GUARANTEED, THEREFORE THEY
SHOULD BE RECHECKED BEFORE UNDERGROUND
CONSTRUCTION BEGINS.