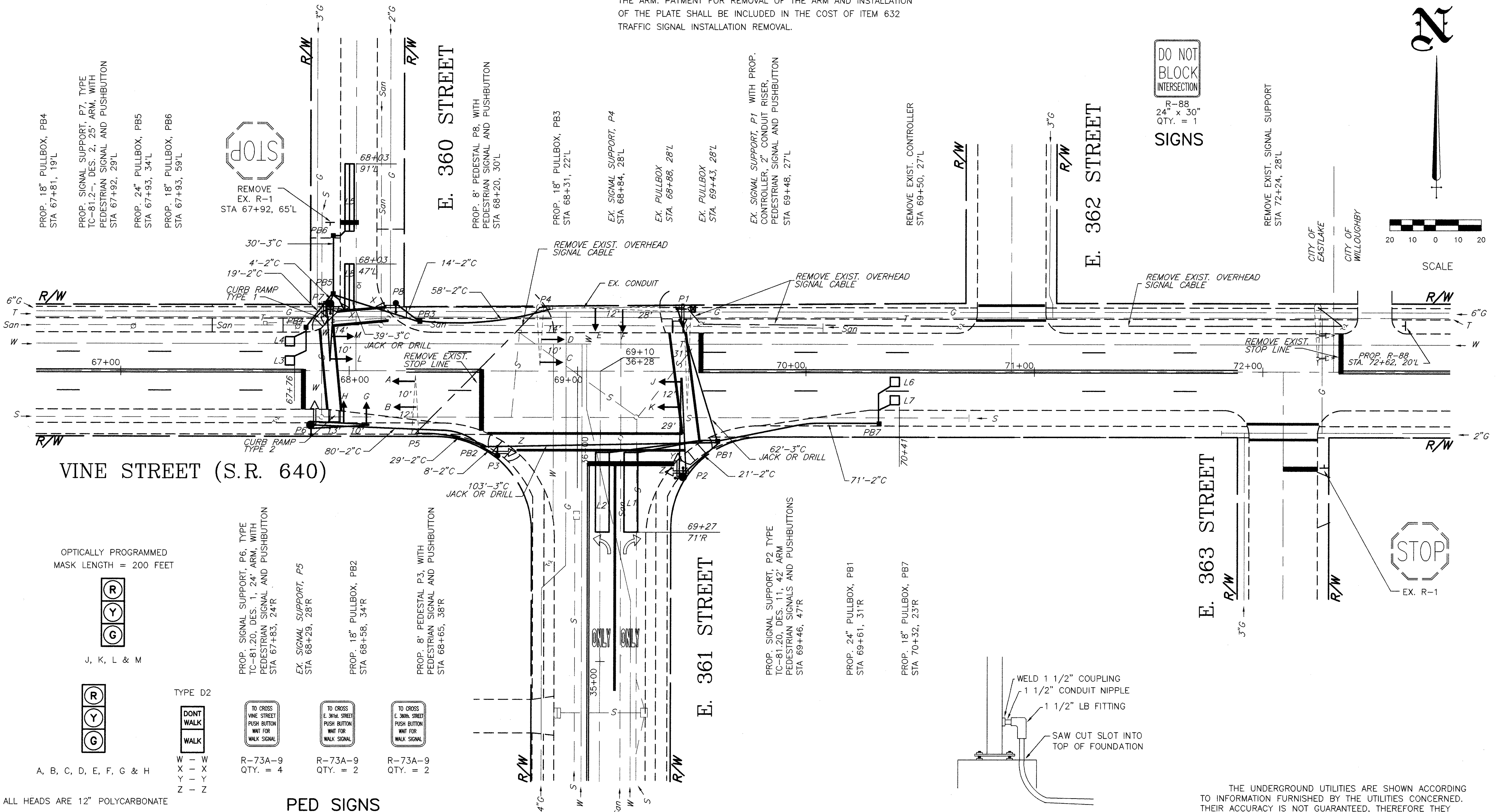
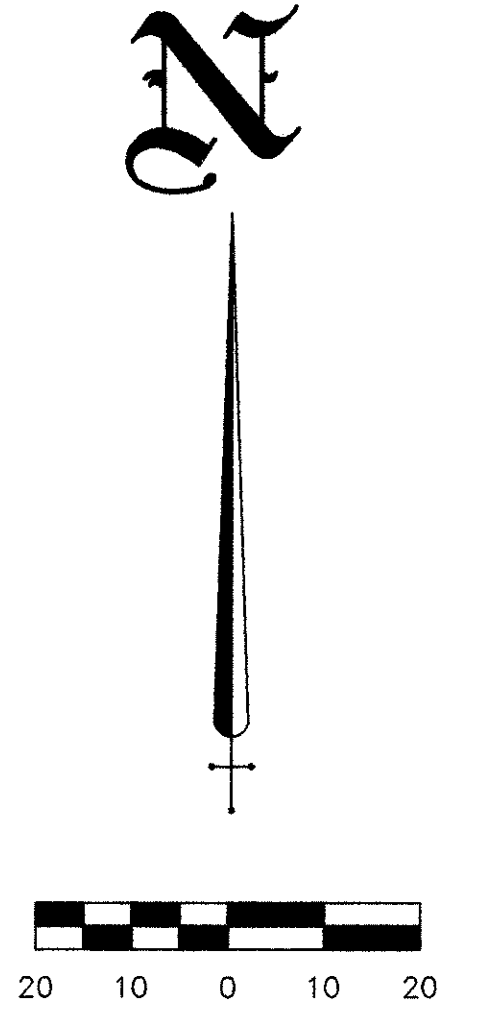


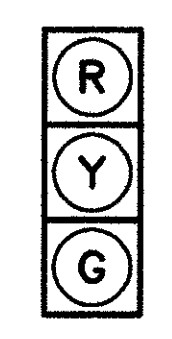
NOTE:
THE EXISTING MASTARM ON SUPPORT P1 FOR EASTBOUND VEHICLE SIGNALS SHALL BE REMOVED. A STEEL GALVANIZED PLATE SHALL BE INSTALLED OVER THE HOLES LEFT BY THE REMOVAL OF THE ARM. PAYMENT FOR REMOVAL OF THE ARM AND INSTALLATION OF THE PLATE SHALL BE INCLUDED IN THE COST OF ITEM 632 TRAFFIC SIGNAL INSTALLATION REMOVAL.

DO NOT BLOCK INTERSECTION

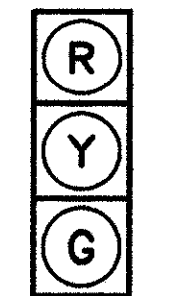
R-88
24" x 30"
QTY. = 1
SIGNS



OPTICALLY PROGRAMMED MASK LENGTH = 200 FEET

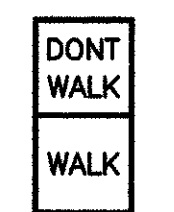


J, K, L & M

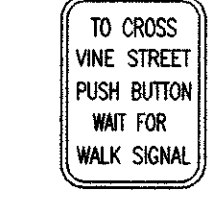


A, B, C, D, E, F, G & H

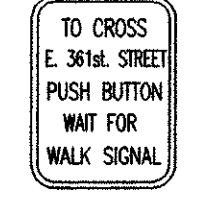
TYPE D2



W - W
X - X
Y - Y
Z - Z



R-73A-9
QTY. = 4

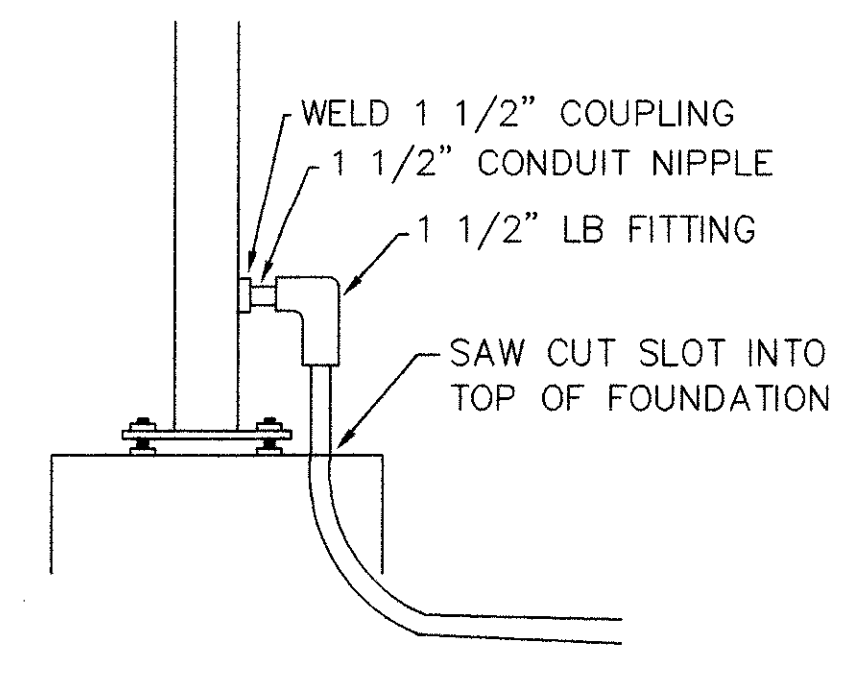


R-73A-9
QTY. = 2



R-73A-9
QTY. = 2

PED SIGNS



DETAIL FOR P5

THE UNDERGROUND UTILITIES ARE SHOWN ACCORDING TO INFORMATION FURNISHED BY THE UTILITIES CONCERNED. THEIR ACCURACY IS NOT GUARANTEED, THEREFORE THEY SHOULD BE RECHECKED BEFORE UNDERGROUND CONSTRUCTION BEGINS.