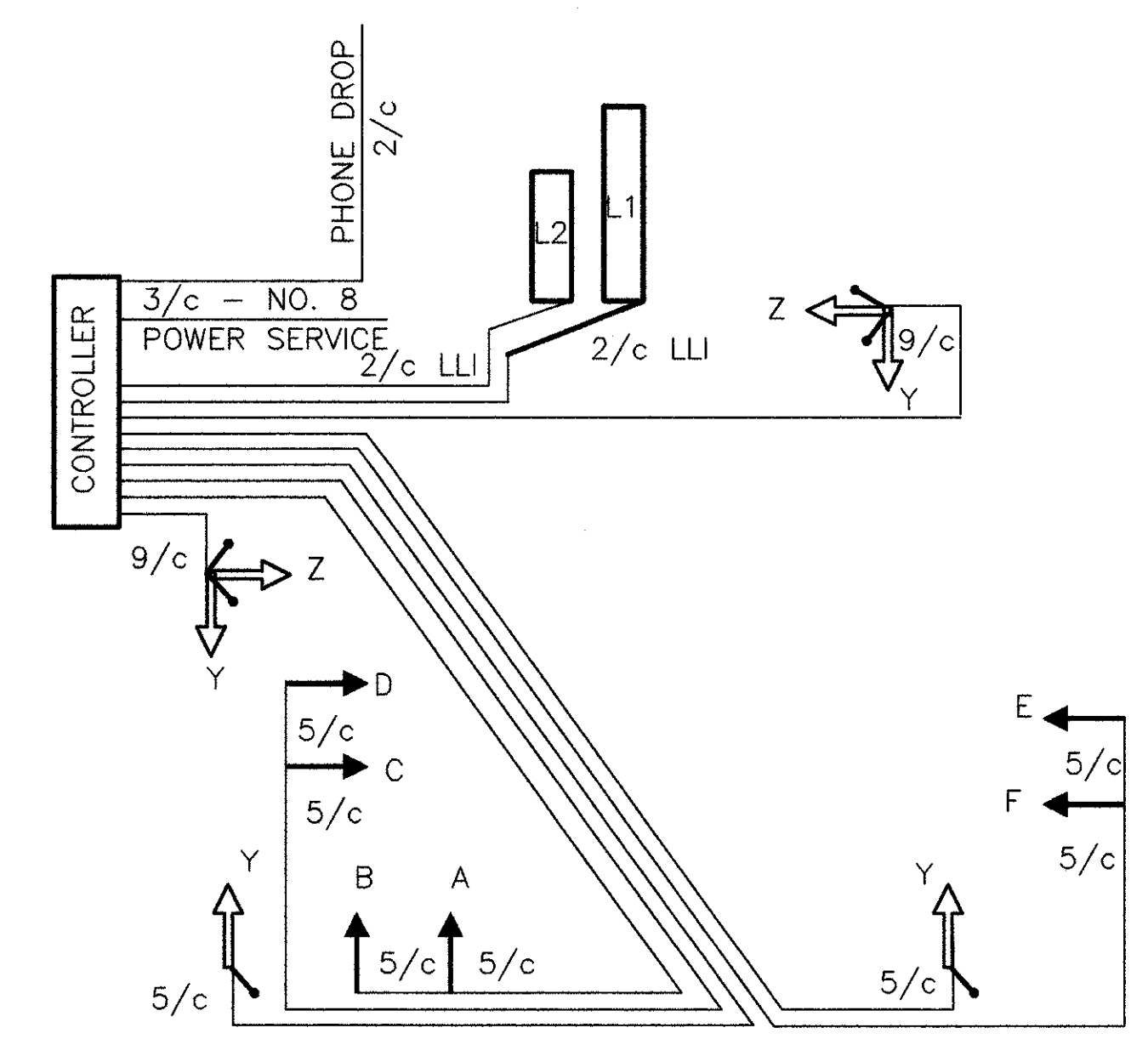


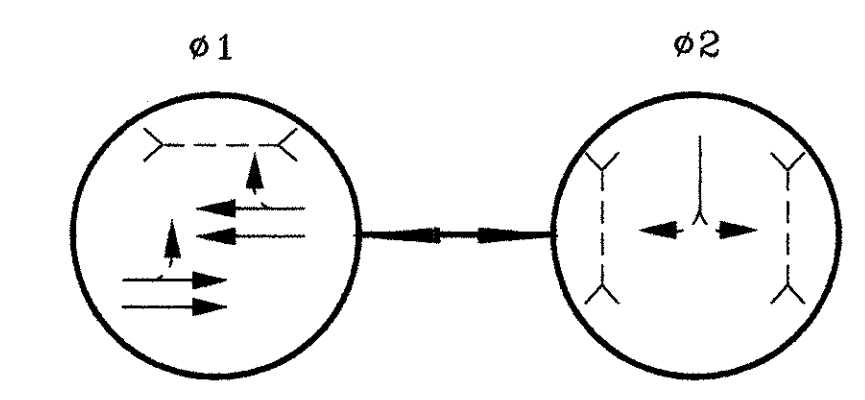
NOTES:
1. ALL ANGLES MEASURED CLOCKWISE.
2. BASE PLATE IS ORIENTED SQUARE TO MAST ARM A (LARGEST ARM) EVEN IF SUPPORT HAS TWO MAST ARMS.

SUPPORT NO.	SIGNAL SUPPORT							ORIENTATION ANGLES (DEG.) FROM MAST ARM "A"											
	TC-81.20		TC-12.30		TC-81.20			TC-12.30			MAST ARM A ANGLE (DEG.)	MAST ARM B	PEDESTRIAN SIGNALS	PEDESTRIAN PUSH BUTTONS	POWER SERVICE	CONTROLLER	LUMINAIRE BRACKET	HANDHOLE	CABLE ENTRANCE (12" FROM TOP)
	DESIGN NO.	ARM DESIGN NO.	POLE HEIGHT (FT.)	FOUNDATION	L	L 1	L 2	L 3	X 1										
P1	PEC		8'	14+58	29'L						0	270	270					180	
P2	PEC		8'	15+13	29'L						0	90	90					180	
P3	1		21'	15+14	21'R	17	6	16			0	270	270					180	
P4	11	4	21'	14+71	21'R	37	26	36			0	270	270					180	
		1				15	4	14			90								

ORIENTATION ANGLE CHART



WIRING DIAGRAM



PHASING DIAGRAM

FUNCTION	ø1	ø2
MINIMUM GREEN	17	8
PED WALK	7	7
PED CLEARANCE	10	11
GREEN EXTENSION	3.0	2.5
MAXIMUM GREEN	88	23
YELLOW CLEARANCE	3.1	3.1
ALL RED CLEARANCE	1.1	1.1
RECALL	MAX	NONE

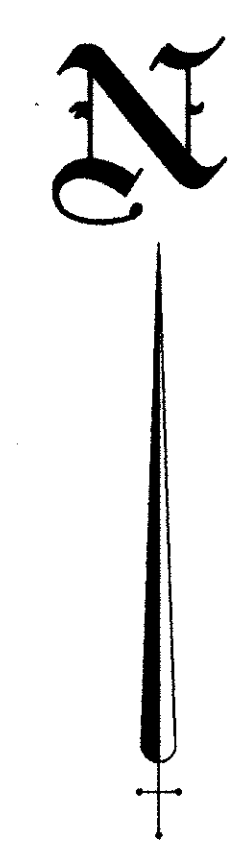
SIGNAL TIMING

SIGNAL HEAD	ø1				ø2				FLASH
	R/W	CLEAR	R/W	CLEAR	R/W	CLEAR	R/W	CLEAR	
A	R	R	R	R	G	G	Y	R	R
B	R	R	R	R	G	G	Y	R	R
C	G	G	Y	R	R	R	R	R	Y
D	G	G	Y	R	R	R	R	R	Y
E	G	G	Y	R	R	R	R	R	Y
F	G	G	Y	R	R	R	R	R	Y
Y-Y	DW	DW	DW	DW	W	FDW	DW	DW	DARK
Z-Z	W	FDW	DW	DW	DW	DW	DW	DW	DARK

SIGNAL DISPLAY CHART

LOOP #	SIZE	# TURNS	MODE	DELAY	UNIT #	PHASE
L1	6' X 40'	2-4-2	PRESENCE		1	2
L2	6' X 25'	2-4-2	PRESENCE	8	2	2

LOOP DETECTOR CHART



ITEM	TOTAL	UNIT	DESCRIPTION
202	75	SQ FT	WALK REMOVED
608	75	SQ FT	4" CONCRETE WALK
625	5	EACH	GROUND ROD
625	3	EACH	PULLBOX, 18", AS PER PLAN
625	68	LIN FT	CONDUIT, 2", 713.04
625	8	LIN FT	CONDUIT, 3", 713.04
625	126	LIN FT	CONDUIT, JACKED OR DRILLED UNDER PAVEMENT, 3"
625	76	LIN FT	TRENCH
632	6	EACH	VEHICULAR SIGNAL HEAD, 3 SECT., 12" LENS, 1 WAY, AS PER PLAN
632	6	EACH	PEDESTRIAN SIGNAL HEAD, TYPE "D-2"
632	6	EACH	PEDESTRIAN PUSHBUTTON
632	1	EACH	LOOP DETECTOR UNIT, AS PER PLAN
632	1	EACH	LOOP DETECTOR UNIT, DELAY AND EXTENSION TYPE, AS PER PLAN
632	4.84	CU YD	CONCRETE FOR ANCHOR BASE FOUNDATIONS
632	1	EACH	SIGNAL SUPPORT, TYPE TC-81.20, DES. 1, WITH 17' ARM
632	1	EACH	SIGNAL SUPPORT, TYPE TC-81.20, DES. 11, WITH MAST ARMS TYPE TC-81.20, DES. 4, 37' AND TYPE TC-81.20 DES. 1, 15'
632	2	EACH	PEDESTAL, 8', TRANSFORMER BASE
632	2	EACH	CABLE SUPPORT ASSEMBLY
632	192	LIN FT	LOOP DETECTOR PAVEMENT CUTTING
632	785	LIN FT	SIGNAL CABLE, 5 CONDUCTOR, NO. 14 AWG
632	194	LIN FT	SIGNAL CABLE, 9 CONDUCTOR, NO. 14 AWG
632	428	LIN FT	LOOP DETECTOR WIRE, TYPE E
632	36	LIN FT	LOOP DETECTOR LEAD-IN CABLE
632	42	LIN FT	POWER CABLE, 3 CONDUCTOR, NO. 8 AWG
632	1	EACH	CONDUIT RISER, 2" DIAMETER
632	6	EACH	COVERING OF VEHICULAR SIGNAL HEADS
632	1	EACH	REMOVAL OF TRAFFIC SIGNAL INSTALLATION, AS PER PLAN
632	1	EACH	PHONE DROP
633	.99	CU YD	CONCRETE FOR CABINET FOUNDATION
633	1	EACH	CONTROLLER, ACTUATED, 2 PHASE, SOLID-STATE DIGITAL, MICROPROCESSOR, AS PER PLAN
642	31	LIN FT	REMOVAL OF PAVEMENT MARKING
642	0.04	MILE	CENTER LINE, TYPE 2
642	35	LIN FT	STOP LINE, TYPE 2

REVISED 11-29-94