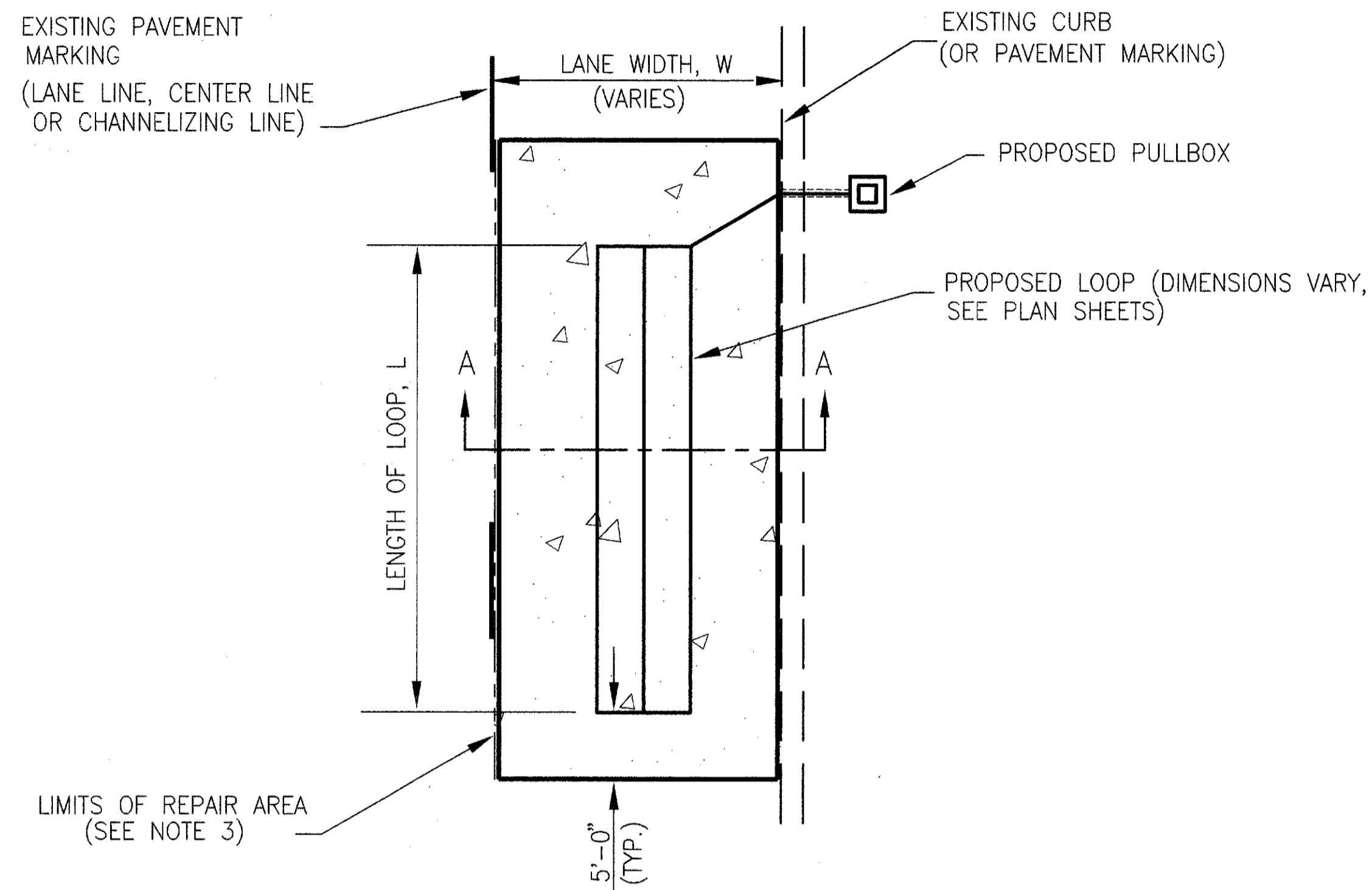
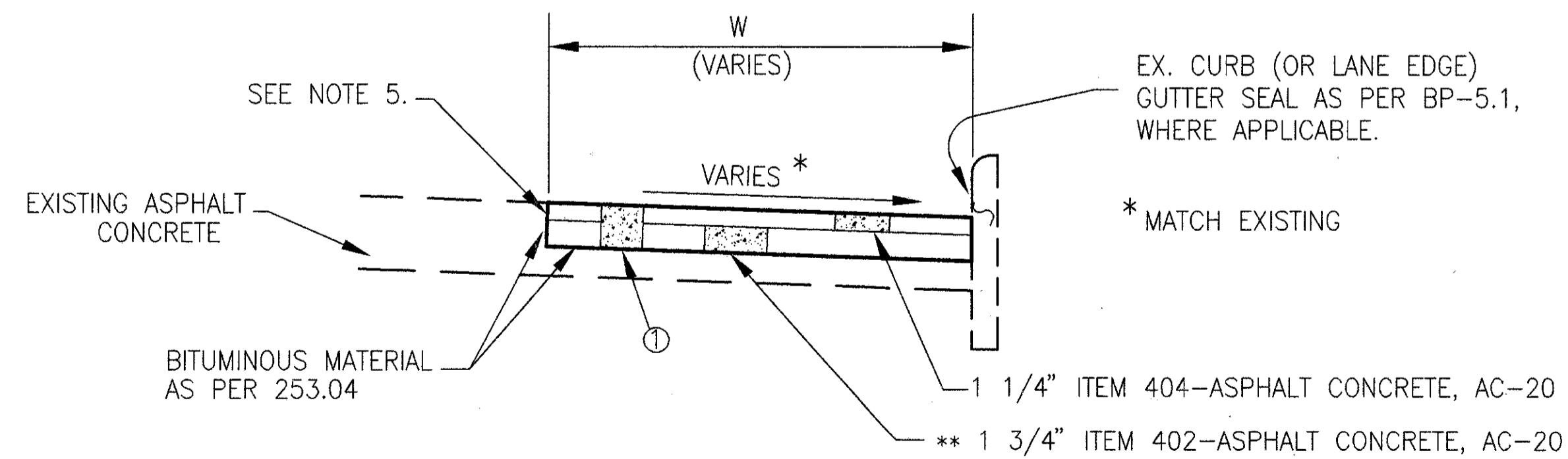


TYPICAL FLEXIBLE PAVEMENT REPAIR AT PROPOSED LOOP DETECTORS



PLAN VIEW



SECTION A-A

① ITEM 253 - PAVEMENT REPAIR (3" MINIMUM DEPTH **)

** THIS THICKNESS MAY BE INCREASED TO MEET THE TOP OF THE EXISTING RIGID BASE, AS DIRECTED BY THE ENGINEER.

NOTES:

- 1) THIS DETAIL IS INTENDED FOR USE ON PAVEMENTS WITH ASPHALT (FLEXIBLE) WEARING SURFACES WHICH EXHIBIT SEVERE SURFACE DISTRESS, SUCH AS "ALLIGATOR CRACKING" OR "RAVELLING".
- 2) THE ENGINEER SHALL DETERMINE WHICH EXISTING ASPHALT PAVEMENT SURFACES ARE UNSUITABLE FOR LOOP DETECTOR PLACEMENT. ALL PAVEMENT REPAIR LOCATIONS SHALL BE AS DIRECTED BY THE ENGINEER.
- 3) THE DIMENSIONS OF THE REPAIR AREA SHALL BE AS FOLLOWS:
 $W \times (L+10 \text{ FT})$; WHERE
 W = LANE WIDTH
 L = LENGTH OF PROPOSED LOOP
- 4) ALL REPAIRS SHALL BE PERFORMED DURING THE HOURS OF 9:00 AM. TO 3:00 PM. REPAIR AREAS SHALL BE COMPLETED PRIOR TO OPENING THE LANE TO TRAFFIC. ALL LANES SHALL BE OPEN TO TRAFFIC AT THE END OF EACH WORK DAY.
- 5) THE CONTRACTOR SHALL PROVIDE A NEAT VERTICAL EDGE ALONG ALL EDGES OF THE REPAIR AREA AS PER 253.02.
- 6) THE CONTRACTOR SHALL REPLACE ALL PAVEMENT MARKINGS DISTURBED BY THE REPAIR AREA(S). SEE THIS SHEET FOR ESTIMATED QUANTITIES.

SUB-SUMMARY

ITEM	TOTAL	UNIT	DECIPTION
253	56.8	CU YD	PAVEMENT REPAIR
642	0.1	MILE	LANE LINE, TYPE 2
642	0.3	MILE	CENTER LINE, TYPE 2
642	133	LIN FT	STOP LINE, TYPE 2
642	120	LIN FT	CROSSWALK LINE, TYPE 2
642	2	EACH	LANE ARROW, TYPE 2