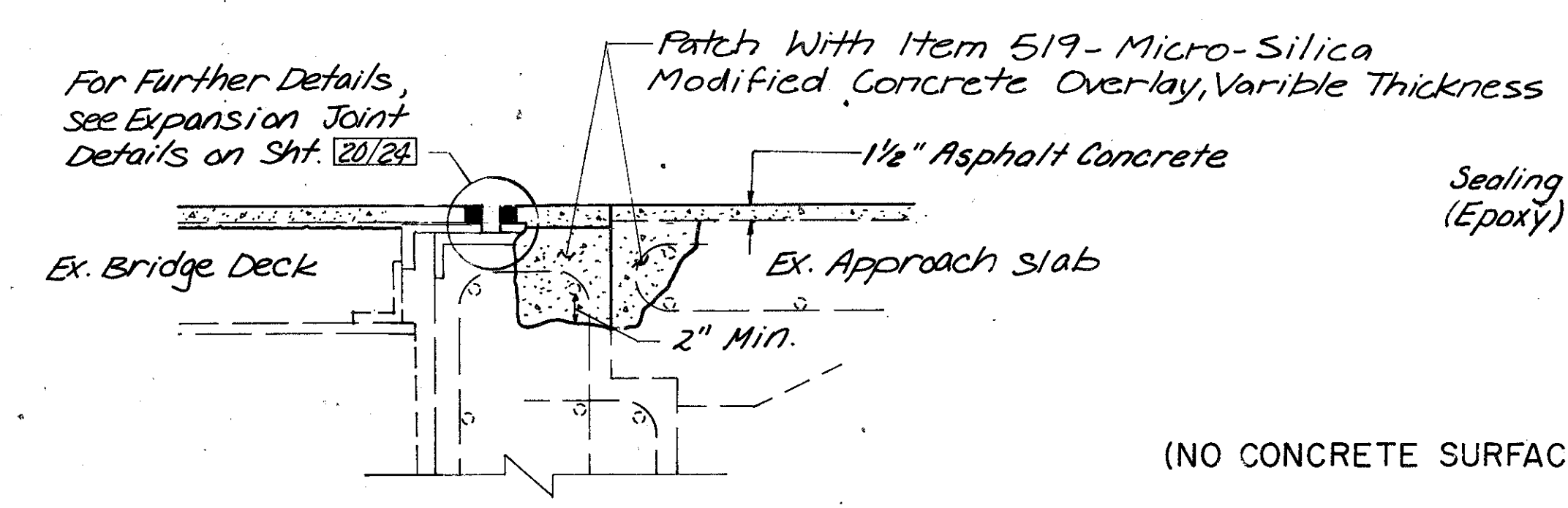
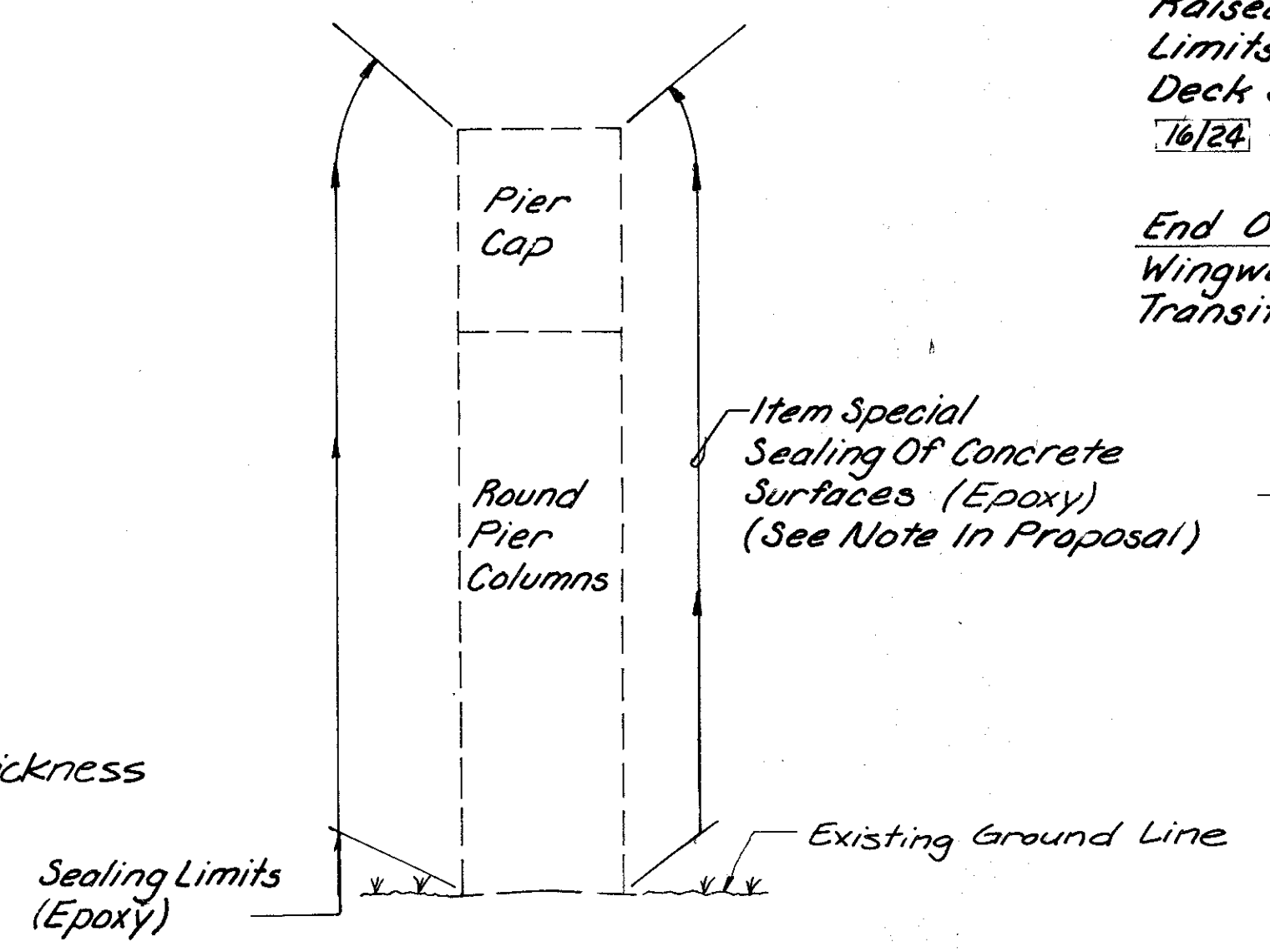


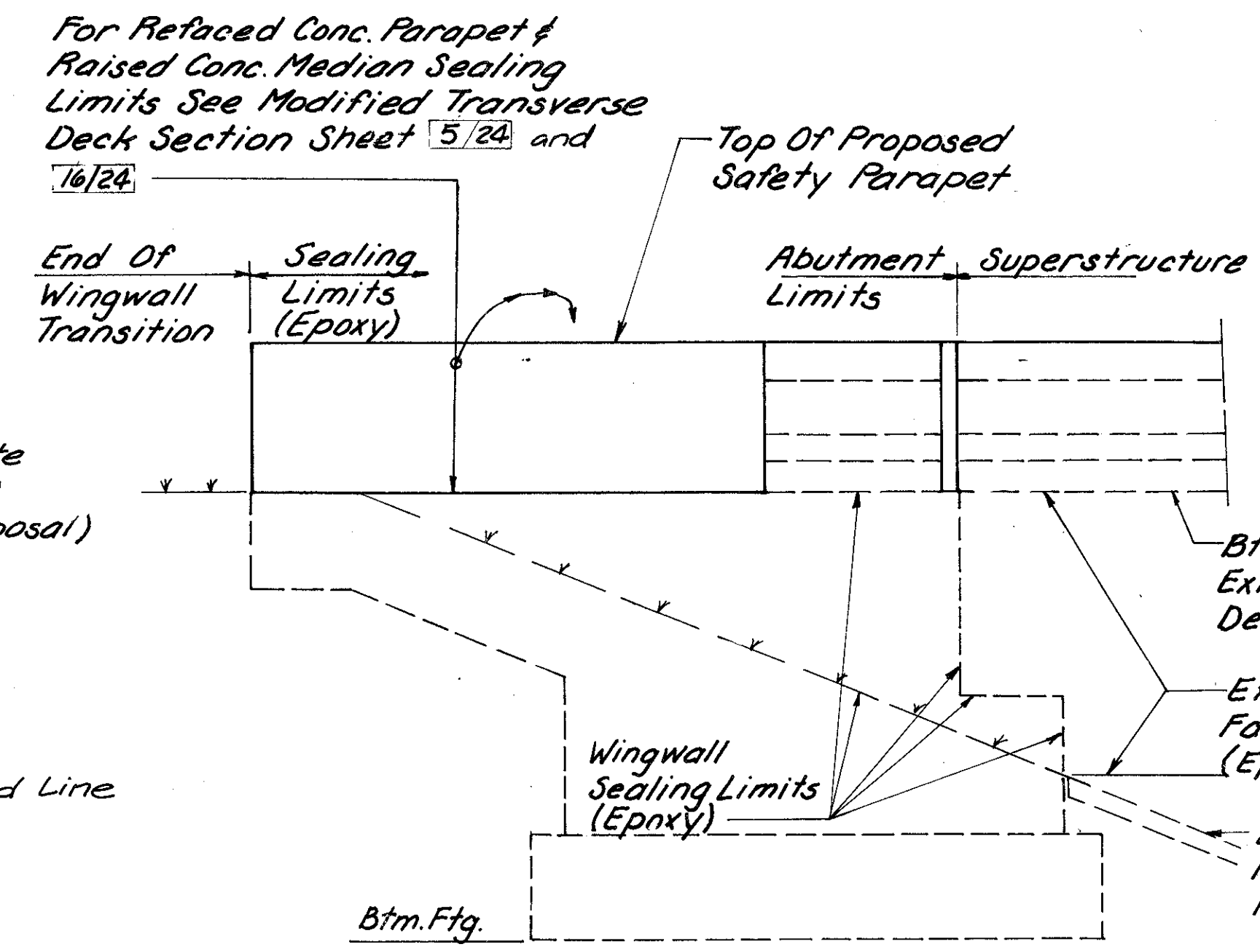
EXISTING



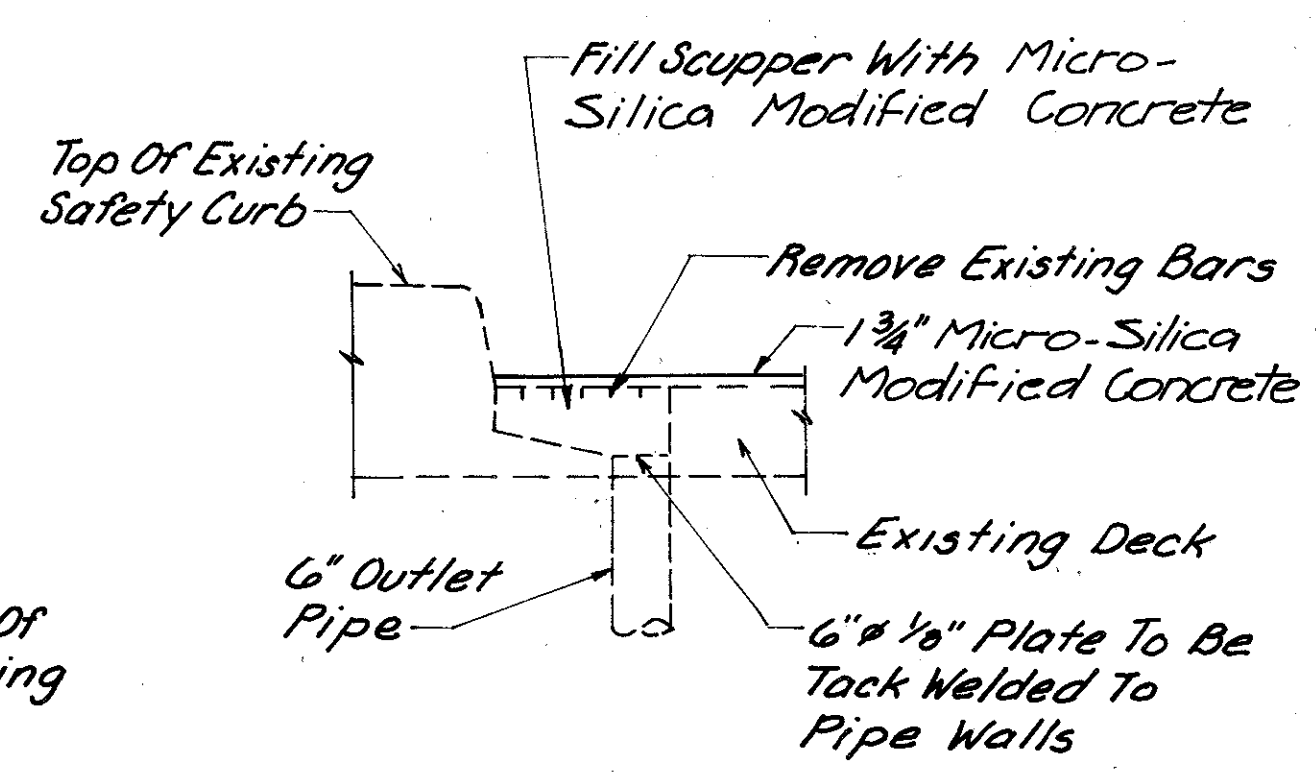
PROPOSED



EXISTING PIER SECTION  
BRIDGE NO. LAK-91-0449 ONLY  
(NO CONCRETE SURFACE SEALING OF PIERS @ BRG. No. LAK - 91 - 0423)



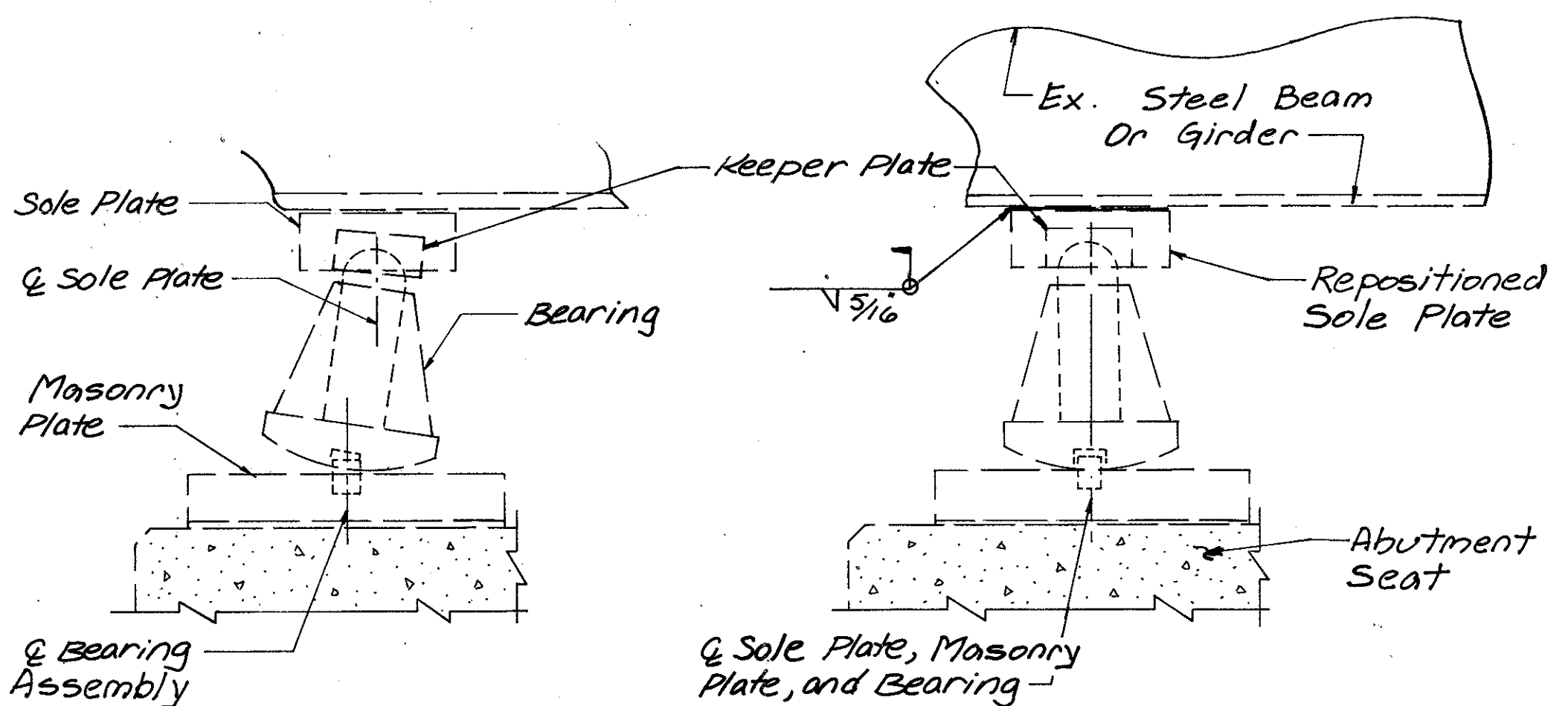
TYPICAL ABUTMENT WINGWALL ELEVATION  
BRIDGE NO. LAK-91-0423  
BRIDGE NO. LAK-91-0449



SCUPPER PLUGGING DETAIL  
Note: Payment Shall Be Made Under Item 517 - Micro-Silica Modified Concrete overlay (Variable Thickness)

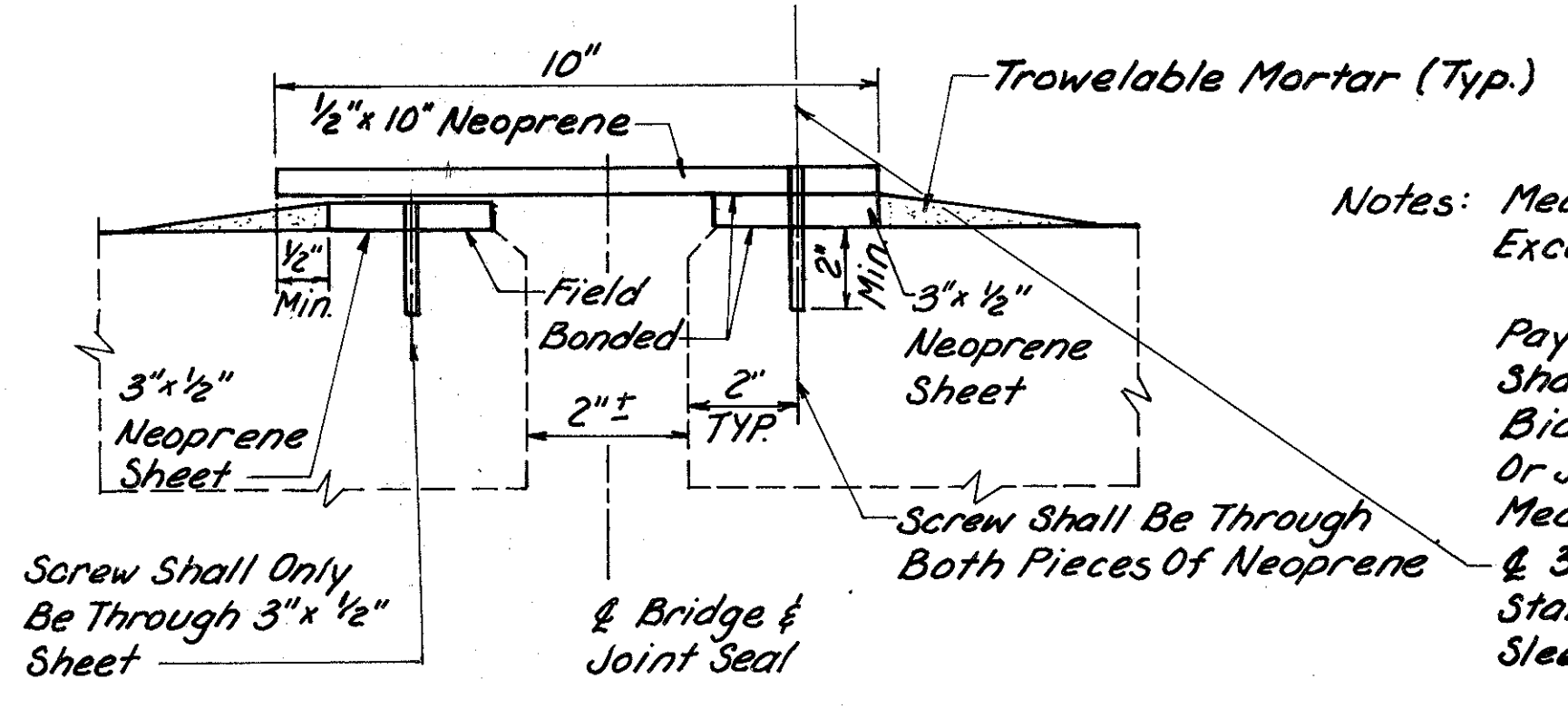
**REPAIR OF UNSOUND BACKWALL TOPS**

(APPROACH SLAB REPAIR SHOWN APPLIES TO LAK-91-0449 BRG. ONLY)



EXISTING SIDE ELEVATION      RESET SIDE ELEVATION

**EXISTING ROCKER RESET DETAILS AT ABUTMENTS**  
(For Reset Procedures, See General Notes Sheet 2/24)



Notes: Median Seal Shall Be Continuous Except At Expansion Joints.  
Payment For Stainless Steel Screws Shall Be Included In The Unit Price Bid For Item 516, Structural Joint Or Joint Sealer Misc. Raised Concrete Median Seal.  
3/4" x 1/2" Sheet & 1/4" Flat Head Stainless Steel Machine Screw With Sleeve Anchor @ 24" Centers (Typical)

**RAISED CONCRETE MEDIAN SEAL**

**LEGEND**

Indicates Area to be Removed Per Item 202 - Portions of Structures Removed.  
MSMC Micro-Silica Modified Concrete.

Burgess & Niple, Limited Engineers and Architects		bn		23 / 24	
<b>MISCELLANEOUS DETAILS</b>					
BRIDGE NO. LAK-91-0423 BRIDGE NO. LAK-91-0449					
DESIGNED	DRAWN	TRACED	CHECKED	REVIEWED DATE	REVISED
RJB	KFK		RJB	WAC 4/10/91	