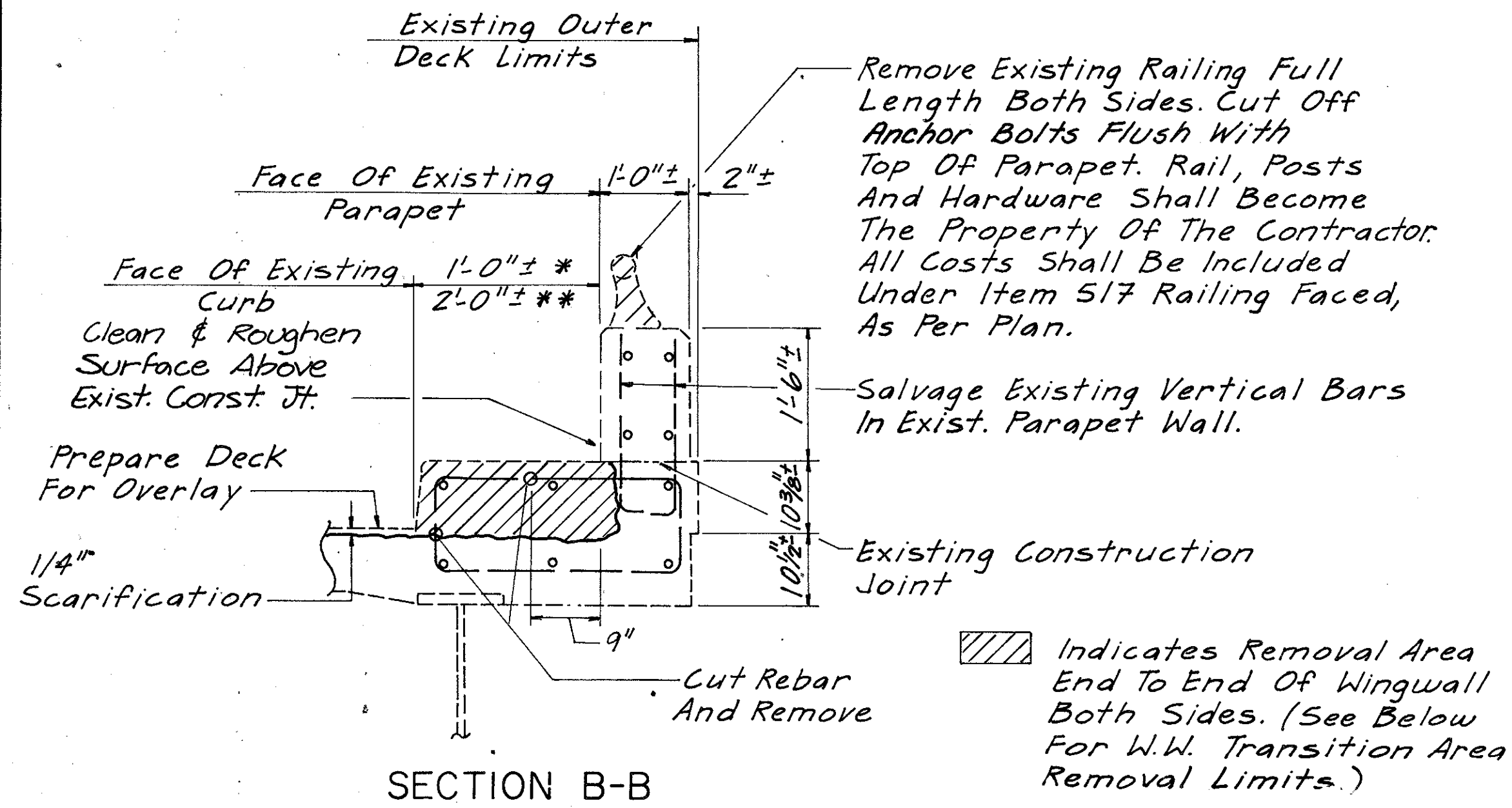


ITEM 517 - RAILING FACED, AS PER PLAN

LAKE COUNTY  
LAK - 91 - (4.23)(4.49)

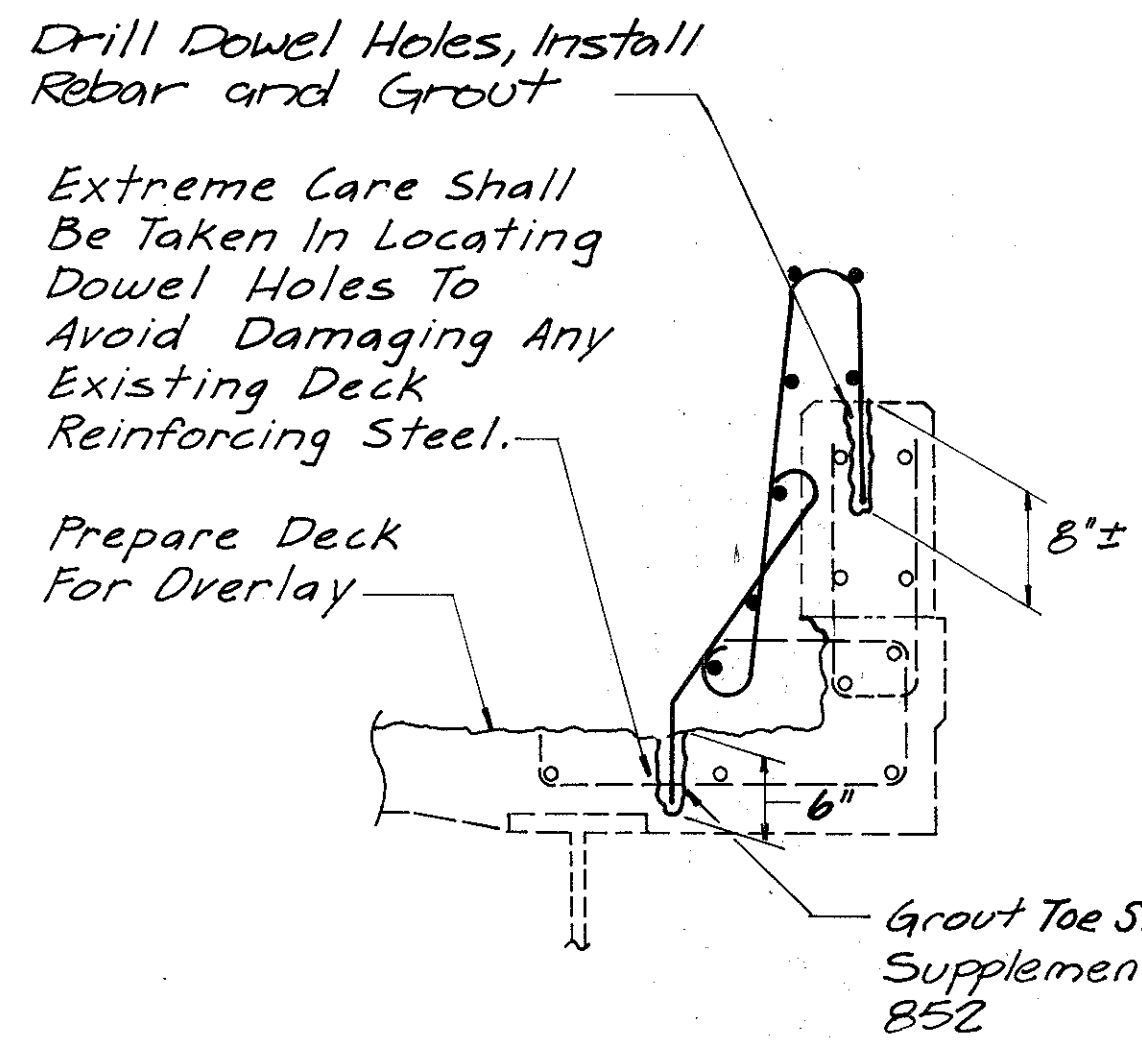
OHIO  
FHWA  
REGION 5

53  
56

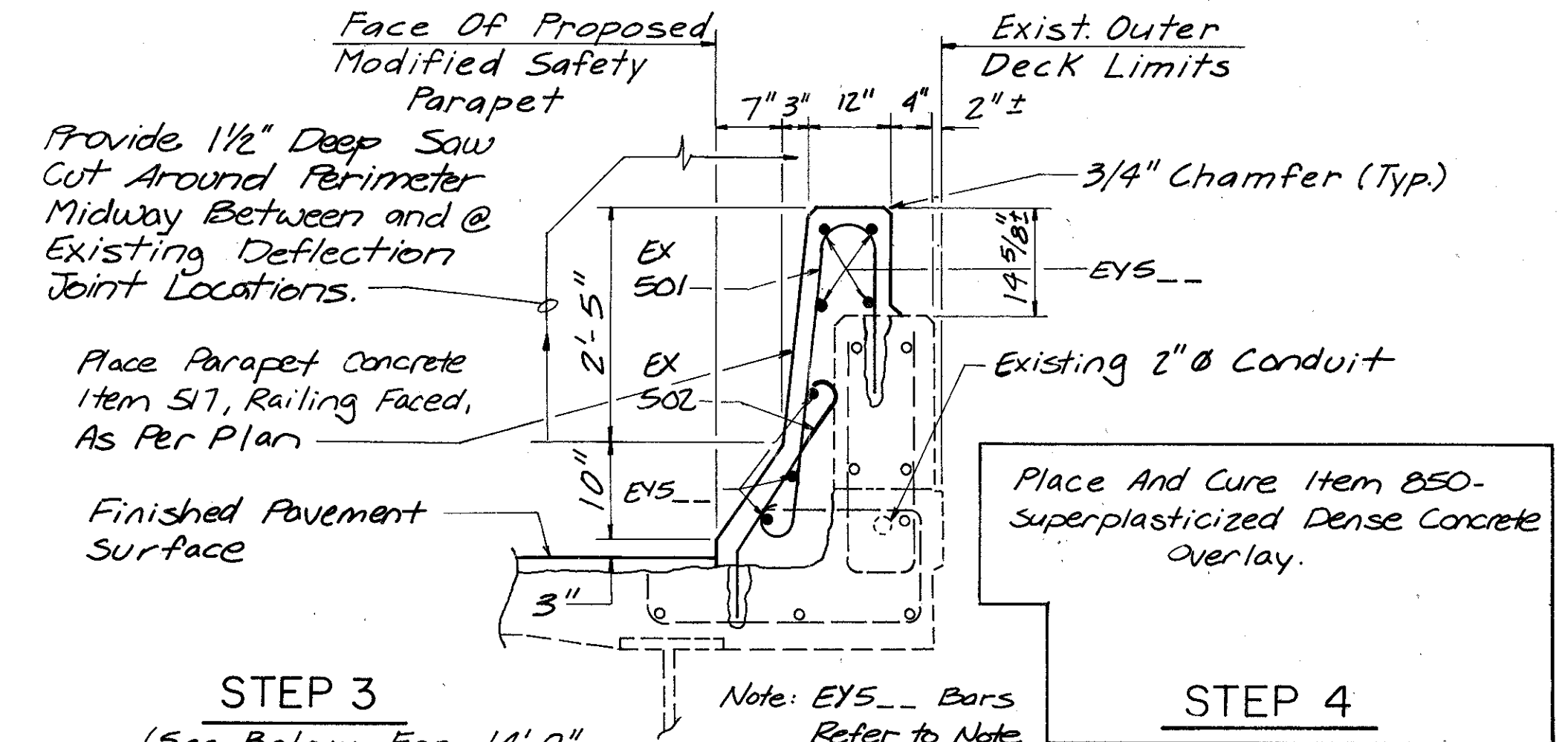


SECTION B-B

STEP I



STEP 2



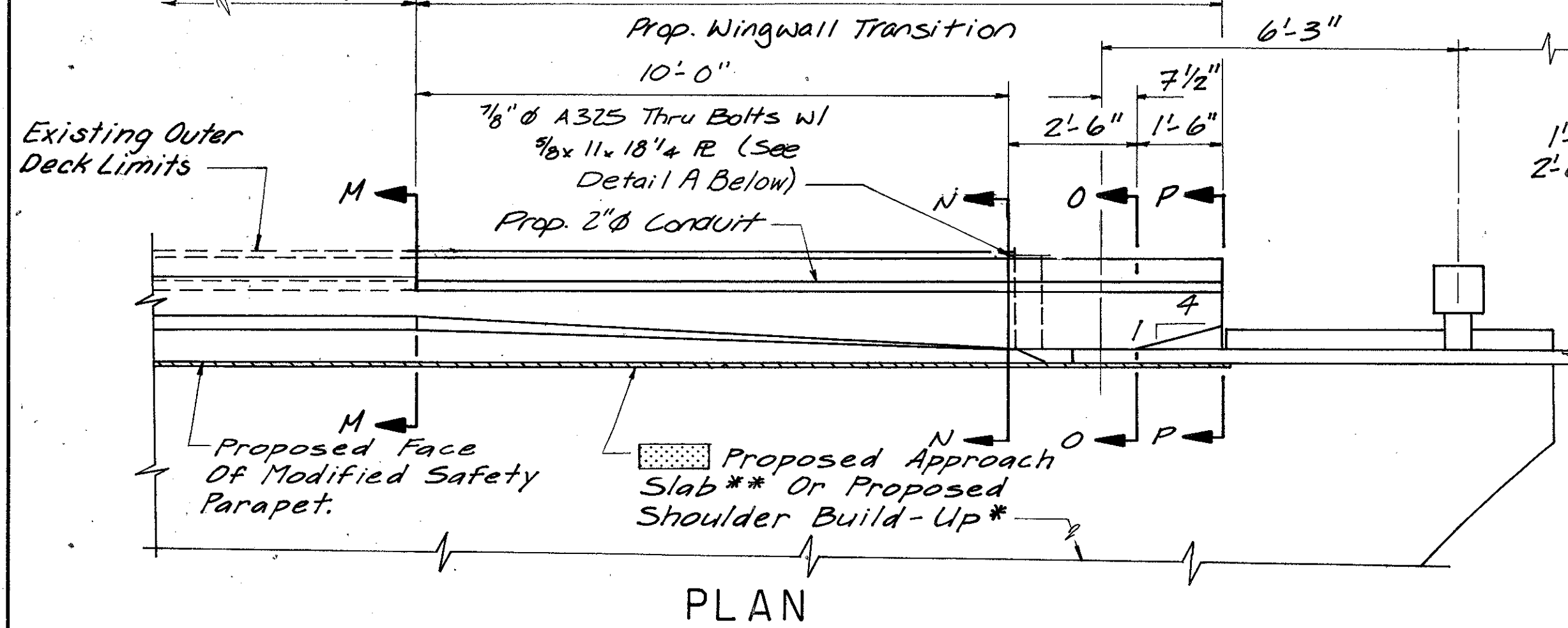
STEP 3

(See Below For 14'-0" Wingwall Transition Areas)

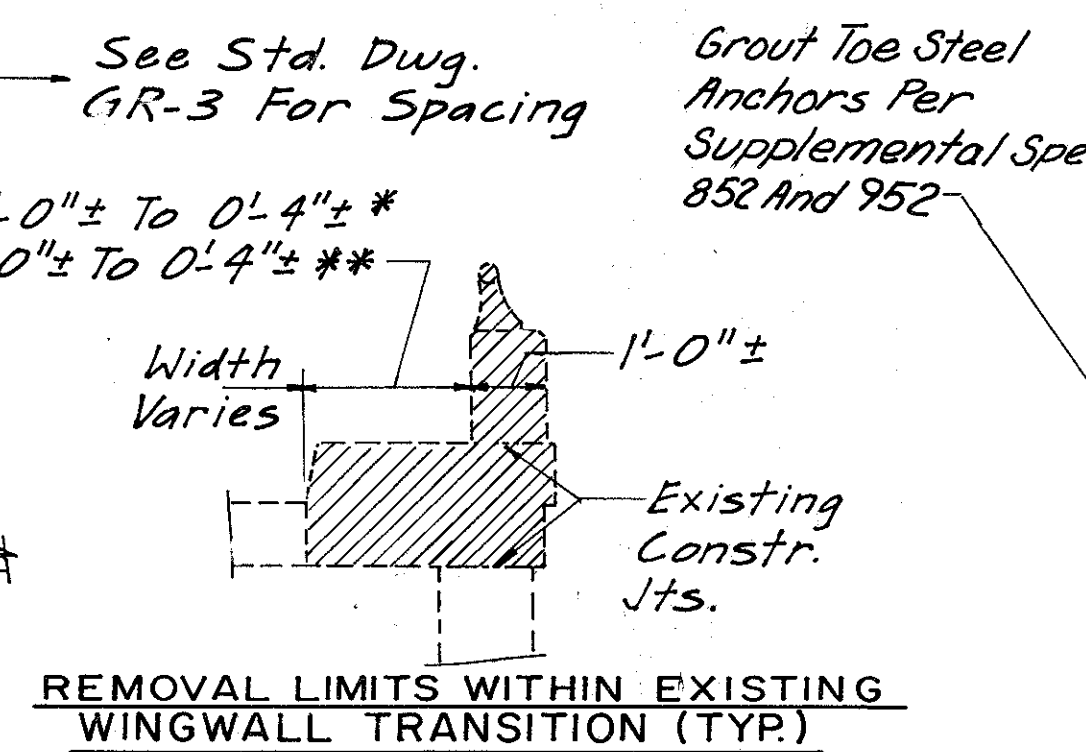
STEP 4

Indicates Removal Area End To End Of Wingwall Both Sides. (See Below For W.W. Transition Area Removal Limits.)

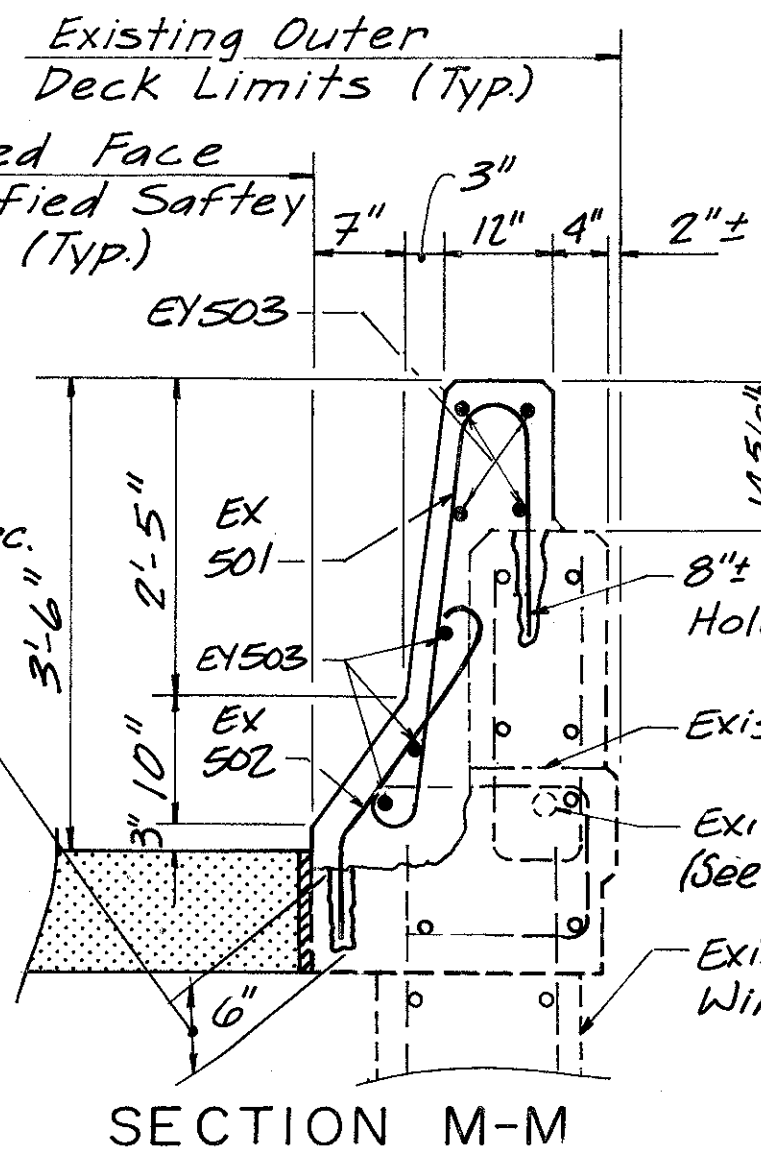
STEP PROCEDURE FOR MODIFYING EXISTING PARAPET TO CONFORM TO SAFETY BARRIER CONFIGURATION



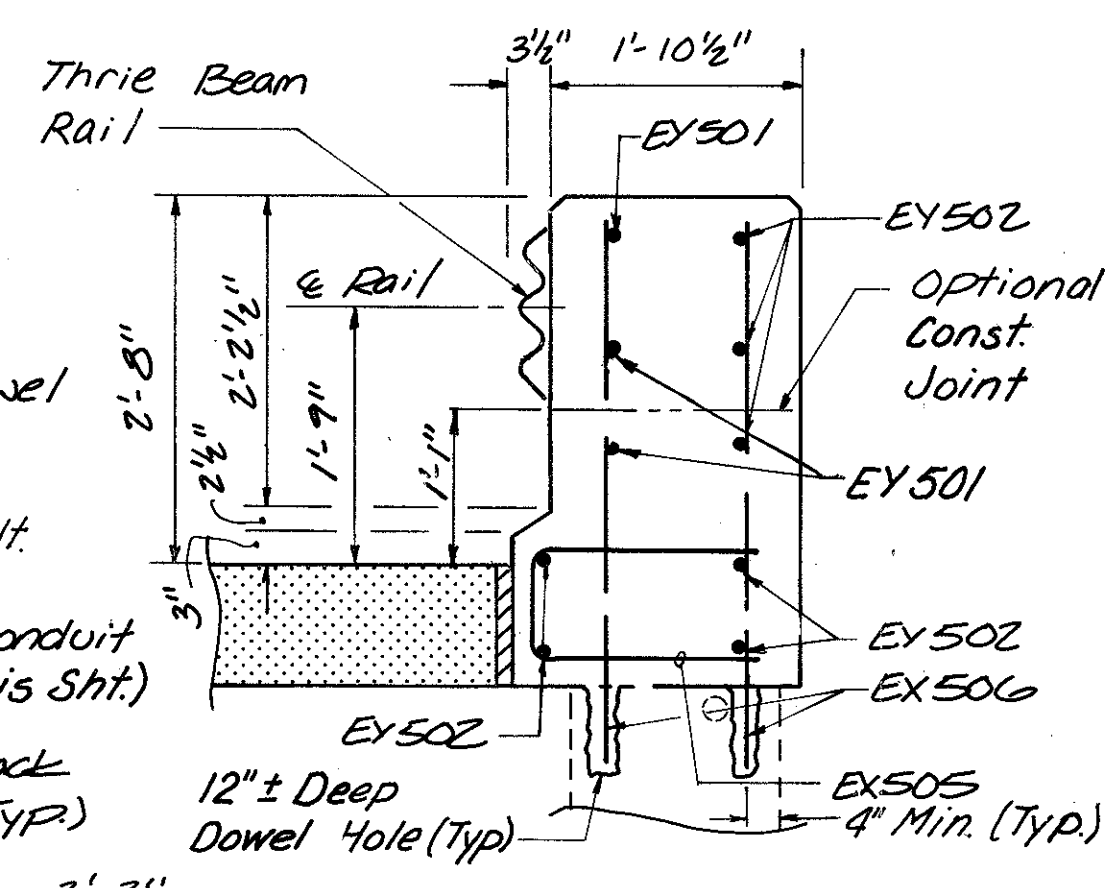
PLAN



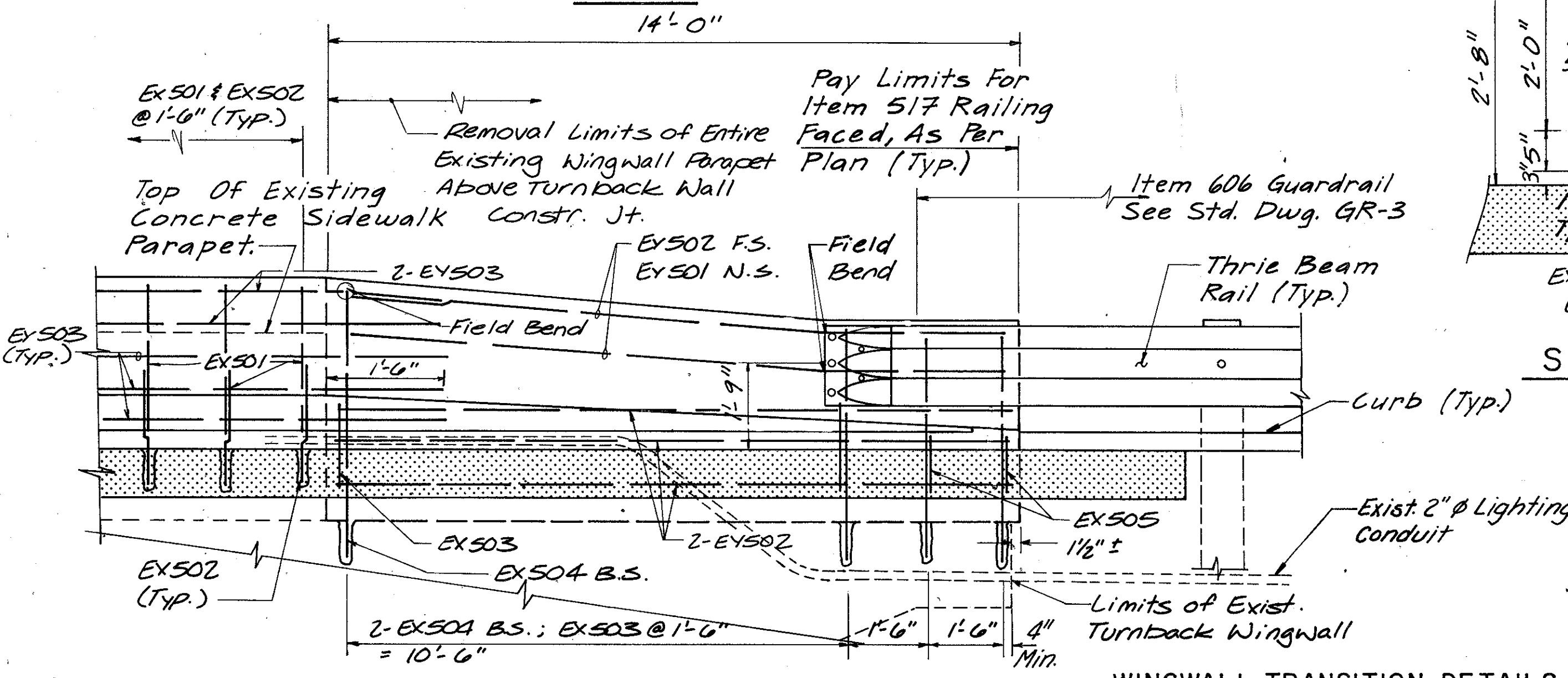
REMOVAL LIMITS WITHIN EXISTING WINGWALL TRANSITION (TYP.)



SECTION M-M



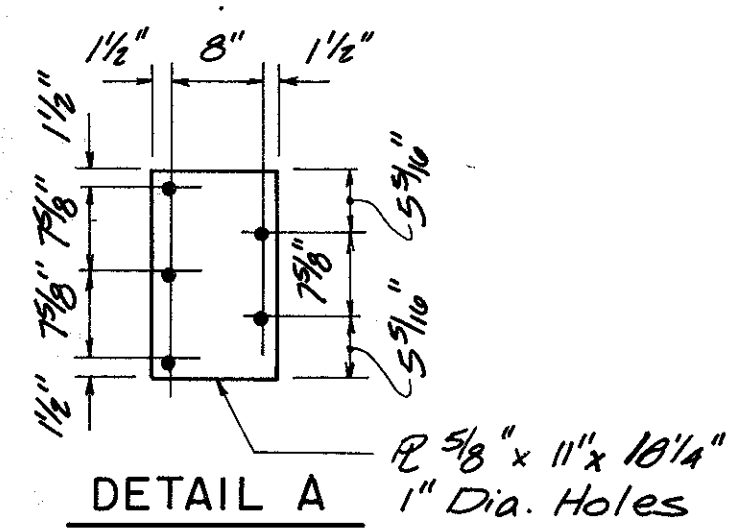
SECTION O-O



ELEVATION

WINGWALL TRANSITION DETAILS

(Typical 4 Locations Each Bridge)



DETAIL A

Estimating Information For Parapet Refacing Procedures

Reinforcing Steel	13# / L.F.
Concrete	0.10 C.Y. / L.F.
Dowel Holes	1.33 / L.F.

All Items Included Under Item 517

COMMON NOTES

1. EXACT EX. REBAR LOCATIONS NOT KNOWN.
2. EXISTING REINFORCED STEEL MAY BE CUT OFF OR BENT OUT OF THE WAY.
3. REMOVAL LIMITS SHALL PROVIDE 2 INCH MIN. CLEARANCE AROUND ALL NEW REINFORCING BARS.
4. ALL REINFORCING STEEL SHALL BE SPACED 1'-6" C/C MAXIMUM. VERTICAL STEEL SHALL MISS EXIST. DEFLECTION JOINTS BY 3" MIN.
5. ALL LONGITUDINAL STEEL SHALL BE CONTINUOUS (WITH MIN. LAP SPLICES 1'-8").
6. CONCRETE COVER SHALL BE 2" TYPICAL.
7. REINFORCING STEEL - ASTM A615, A616 OR A617, GRADE 60, fy = 60 KSI, fs = 24 KSI.
8. FOR ADDITIONAL NOTES AND INFORMATION SEE BR-1 AND THE GENERAL NOTES.
9. BRIDGES WITH LIGHTING: CARE SHALL BE TAKEN NOT TO DISTURB EXIST. 2" Ø CONDUIT IN PARAPETS. SEE GENERAL NOTES.
10. FOR REINFORCING BAR INFO, SEE SHEET 21/24.

\* LAK-91-0449 Bridge  
\*\* LAK-91-0423 Bridge

Burgess & Niple, Limited  
Engineers and Architects

TYPICAL RAILING FACING & BARRIER TRANSITION DETAILS

BRIDGE NO. LAK-91-0423  
BRIDGE NO. LAK-91-0449

DESIGNED	DRAWN	TRACED	CHECKED	REVIEWED DATE	REVISED
RJK	JNV		RJB	WAC 4/10/91	

BRUNING 44-231 71356