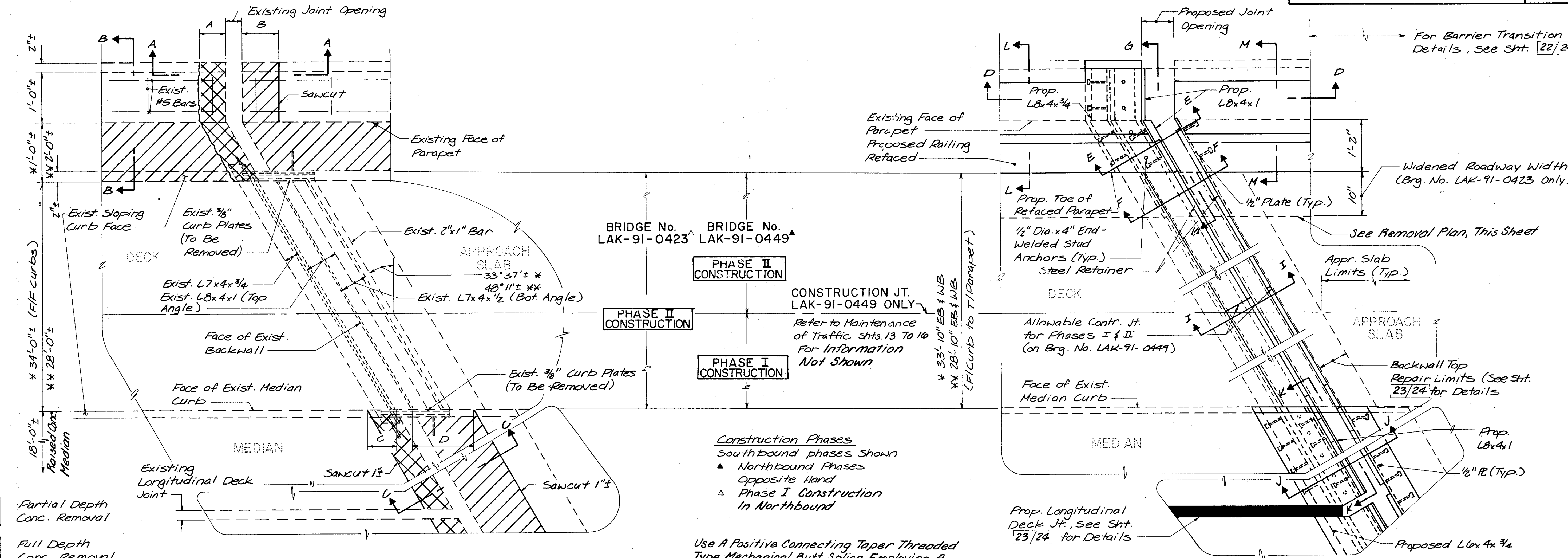
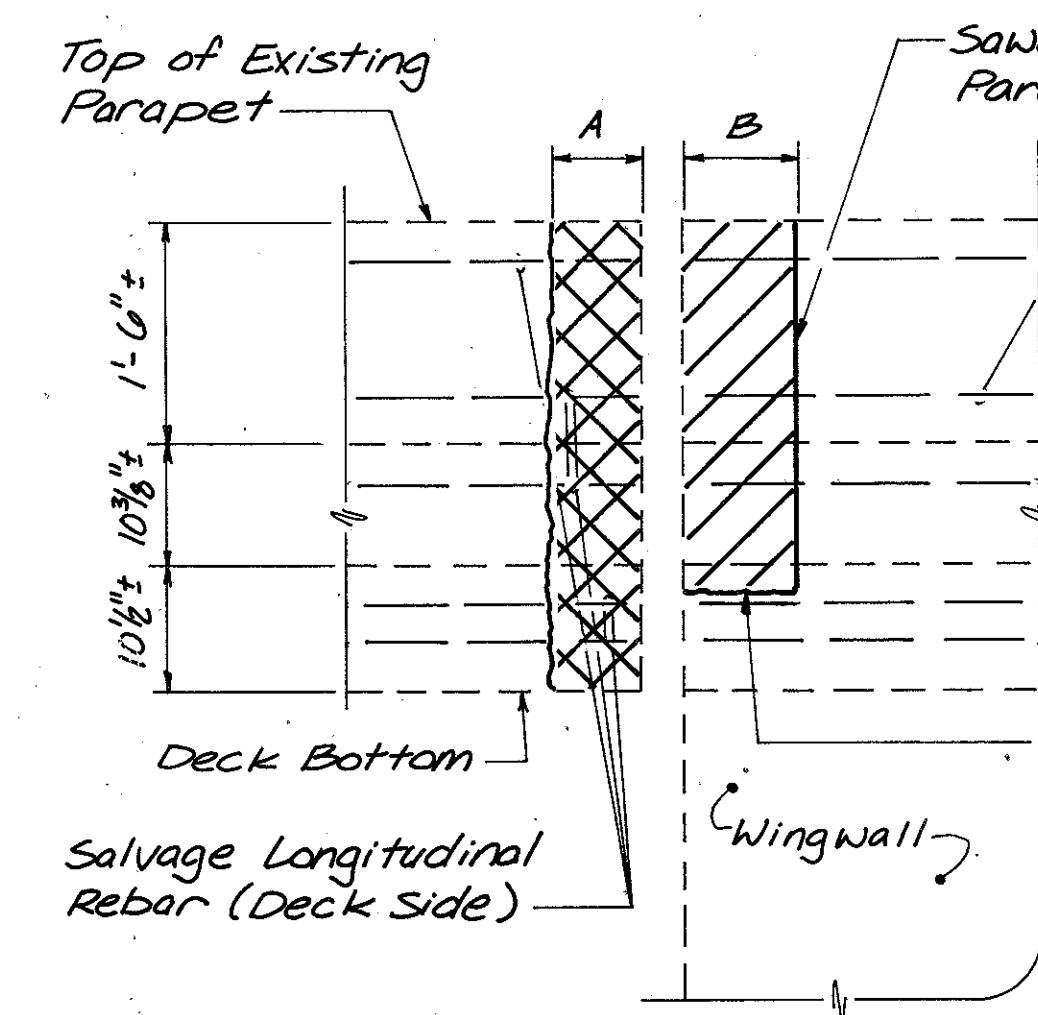
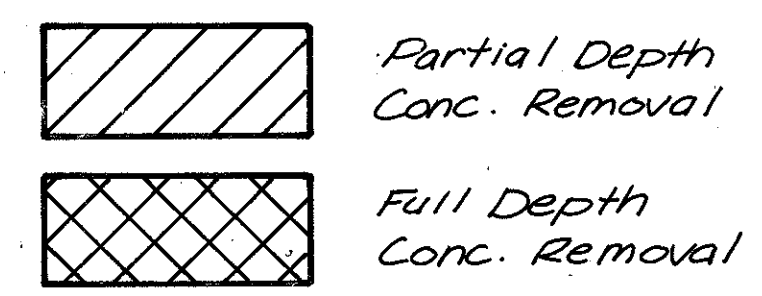


ITEM 516 - VERTICAL EXTENSION OF STRUCTURAL EXPANSION JOINT INCLUDING ELASTOMERIC STRIP SEAL, AS PER PLAN

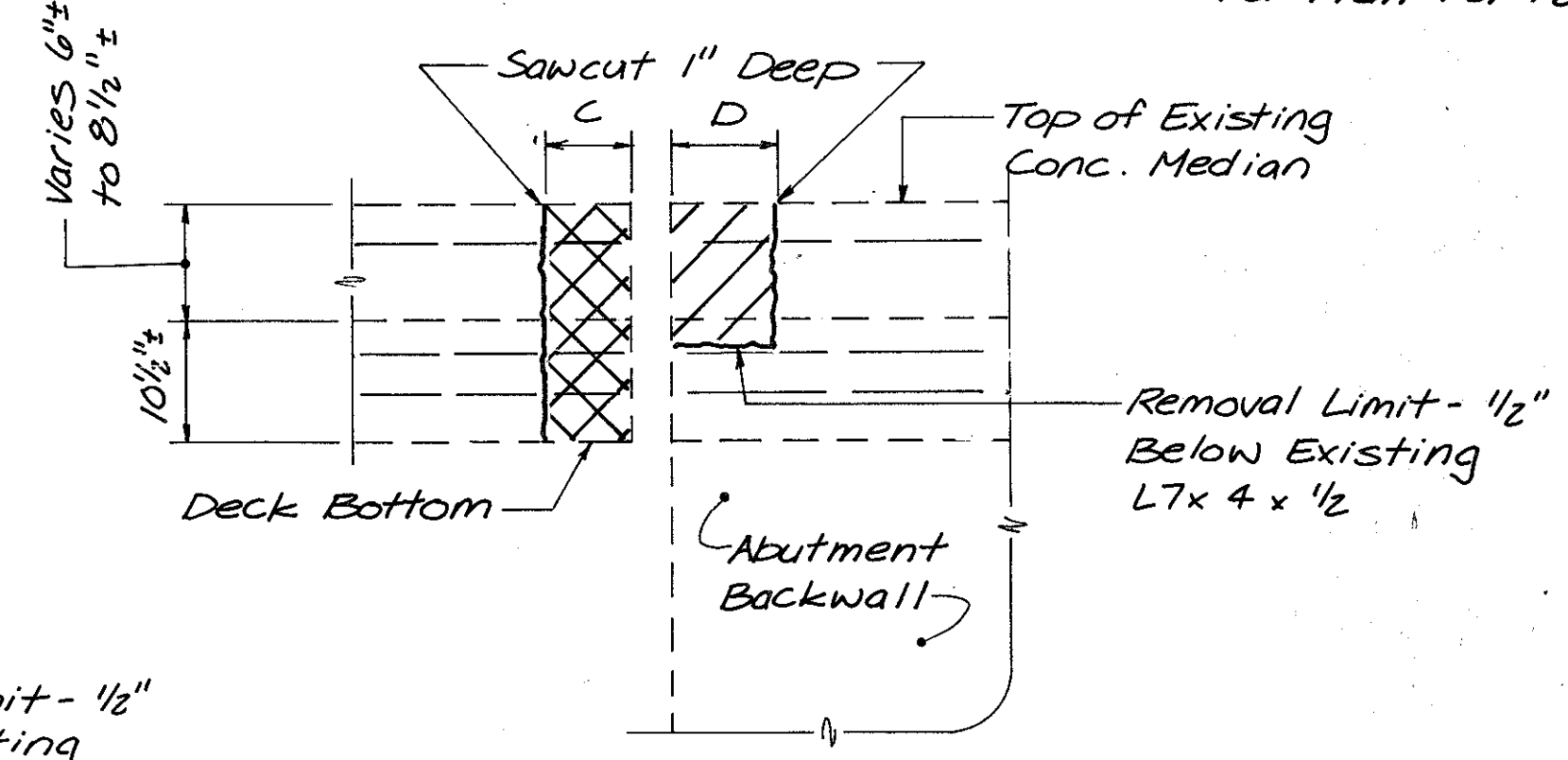


REMOVAL PLAN OF EXISTING END DAM

PLAN VIEW OF END DAM EXTENSION



SECTION A-A

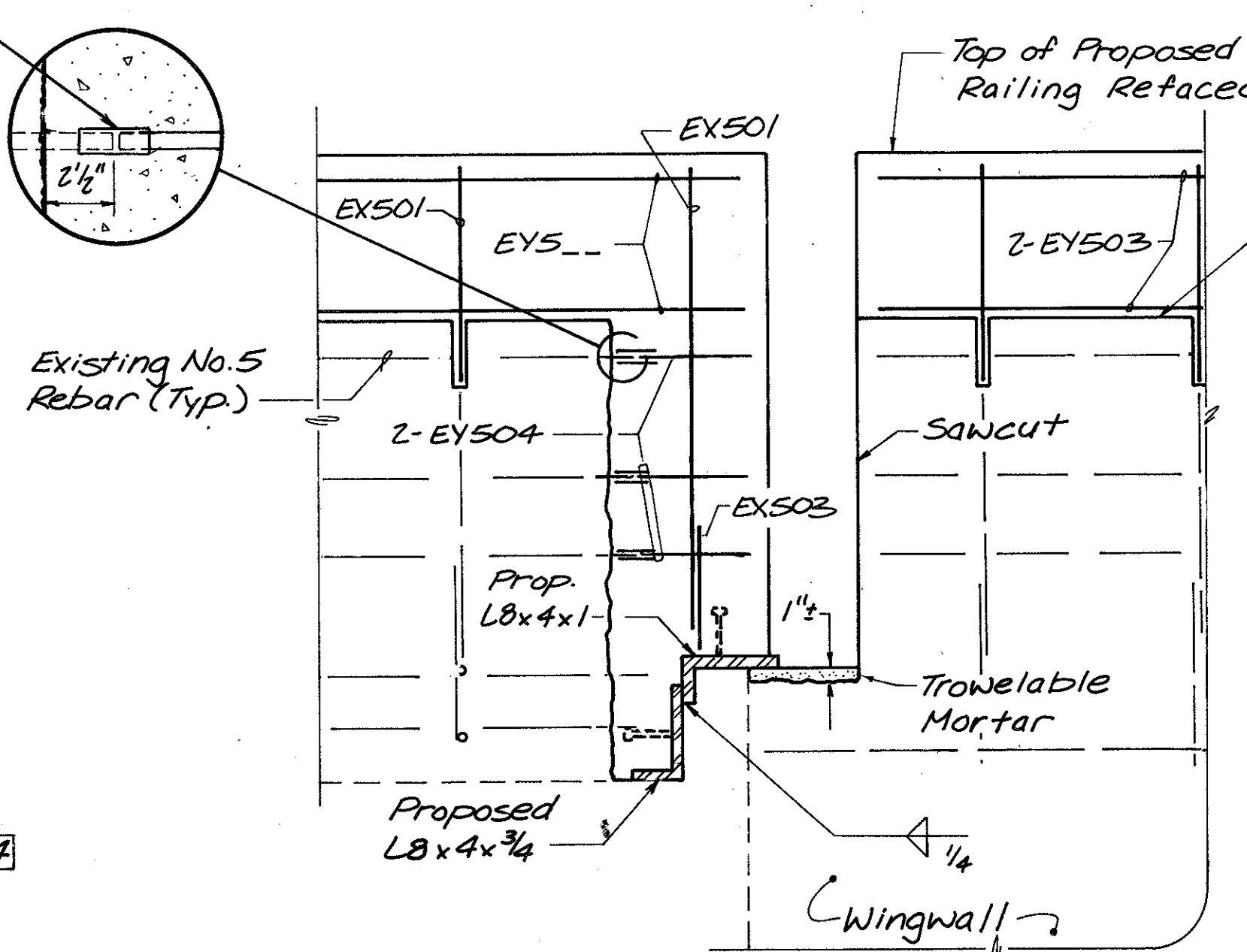


SECTION C-C

Removal Dimensions (Measured Along Parapet or Curb)	Bridge No.	
	LAK-91-0423	LAK-91-0449
A	12 1/2"	8 3/4"
B	11 3/4"	9"
C	9 1/2"	7 1/2"
D	18 3/4"	15"

SECTIONS NOT SHOWN

FOR SECTIONS E-E, F-F, G-G, H-H, J-J, & K-K SEE SHEET 21/24  
FOR SECTIONS B-B, L-L, & M-M, SEE SHEET 22/24



SECTION D-D

FOR REINFORCING BAR INFO., SEE SHEET 21/24

Notes:  
All Remaining Work Shown, Other Than Lateral and Vertical Expansion Joint Extensions, Shall Be Included Under Item 517, Railing Faced, As Per Plan, or Item Special-Parapet Modification at Expansion Joints, as Per Plan.

Note: Existing End Dam Joint Detail Info. Based On Outdated O.D.O.T. Bridge Std. Dwg. SD-1-65.

\* - LAK-91-0449 Bridge  
\*\* - LAK-91-0423 Bridge

Work This Sheet With Shts. 21/24 22/24  
Burgess & Niple, Limited  
Engineers and Architects

SEALING OF STRUCTURAL STEEL EXPANSION JOINTS

BRIDGE NO. LAK-91-0423  
BRIDGE NO. LAK-91-0449

DESIGNED	DRAWN	TRACED	CHECKED	REVIEWED DATE	REVISED
WAC	KK	-	WAC	2/28/24	