

PIER NO. 2
(SOUTH ELEVATION)

LEGEND

▨ Indicates Area To Be Patched Per Item Special-Patching Concrete Structures With Trowelable Mortar.

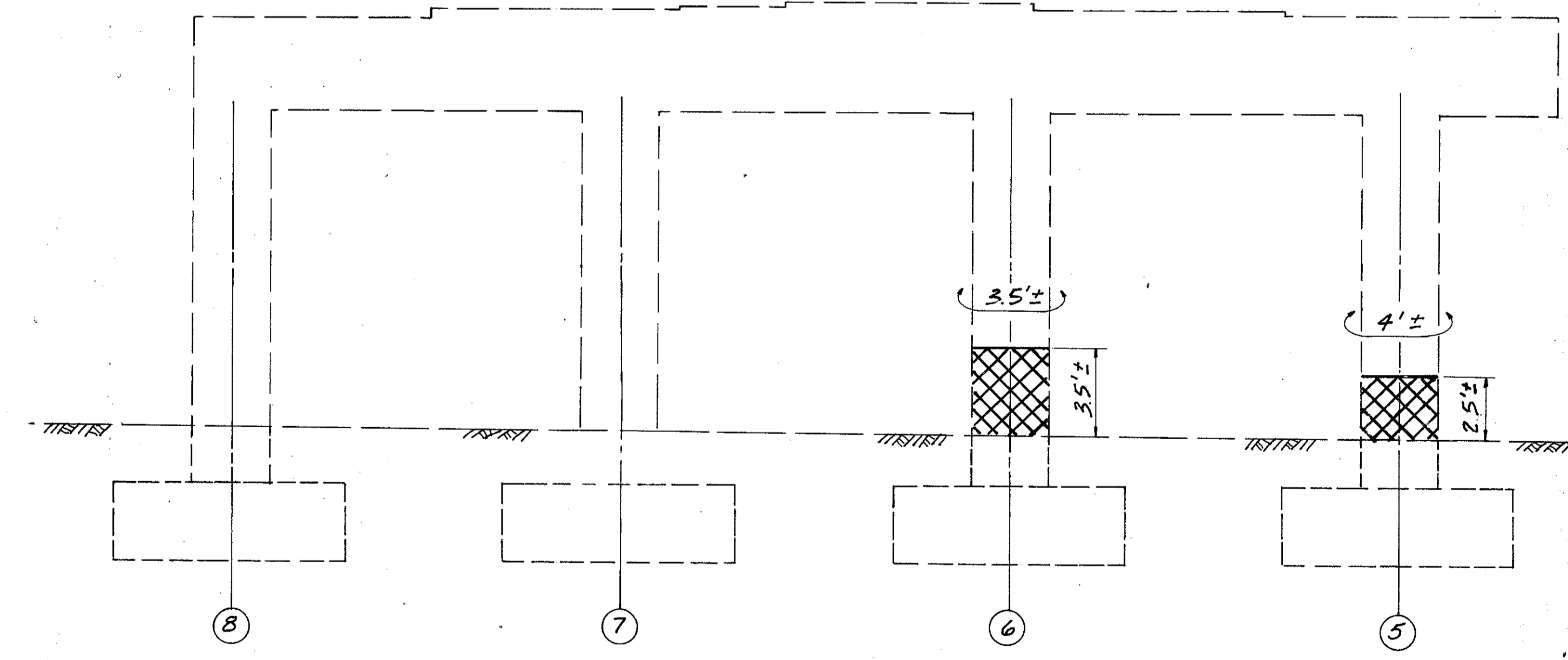
Summary Of Repair Quantities		
Pier Column No.	No.	Estimated Quantities (S.F.)*
1	5	20
1	6	24
2	1	28
2	2	18
2	3	54
2	4	12
2	5	18
2	6	24
Total		198 S.F.

* Estimated Quantity Has Been Increased 100% Over Measured Quantity To Allow For Additional Deterioration And Extension Of Deterioration Below Ground Level. Exact Dimensions Of Patches Shall Be Determined By The Engineer In The Field For Final Pay Quantity.

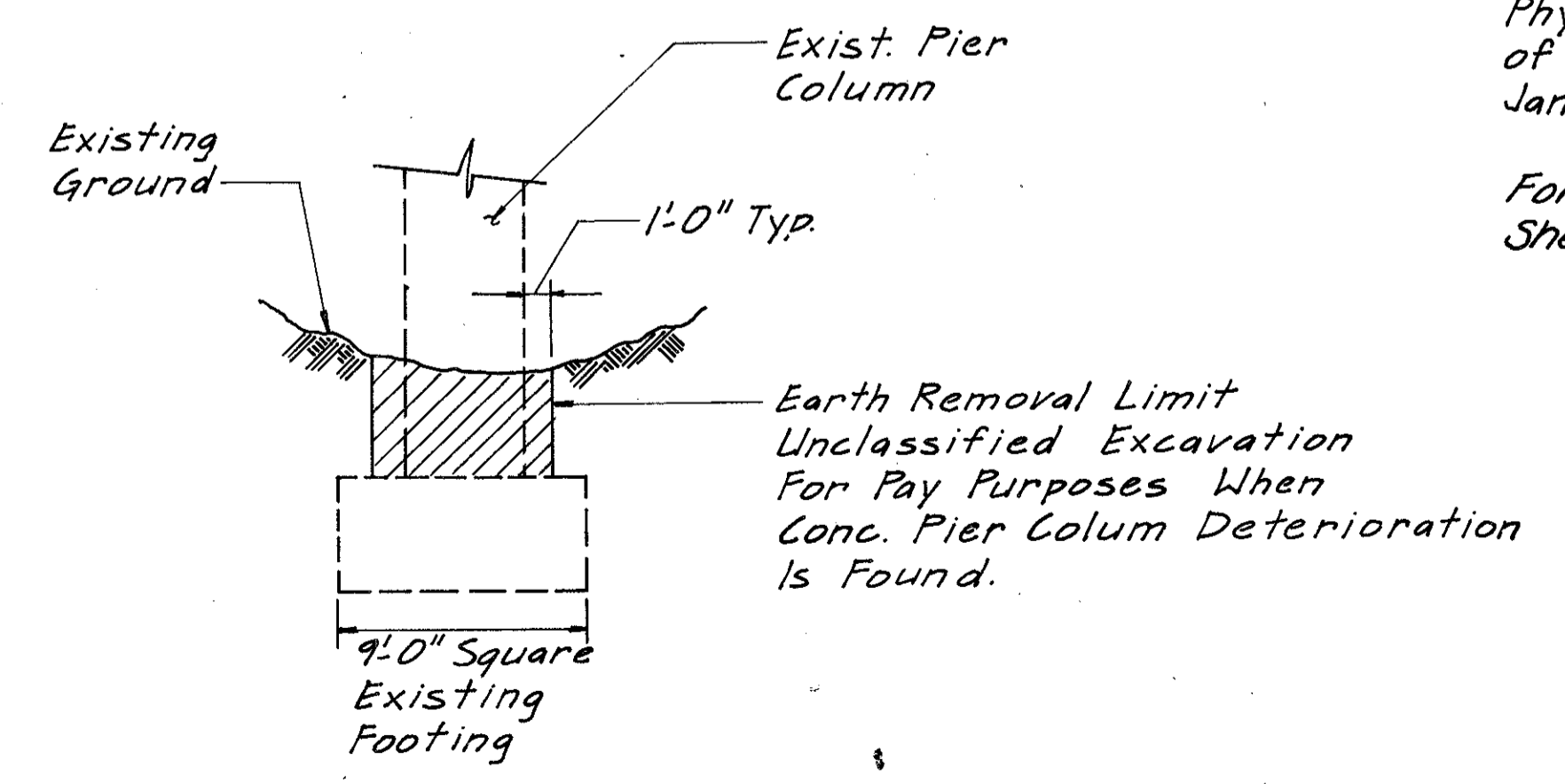
Physical Inventory of Measured Quantities of Deterioration Was Performed In January 1991.

For Sealing Of Concrete Surface Limits See Sheet 23/24

No Deterioration Apparent On Southbound Pier No. 1



PIER NO. 1
(NORTH ELEVATION)



EXCAVATION LIMITS FOR 503 UNCLASSIFIED EXCAVATION AS PER PLAN
SEE GENERAL NOTES SHT. 27/24

Burgess & Niple, Limited
Engineers and Architects

PIER REPAIRS

BRIDGE NO. LAK-91-0449
S.R. 91 OVER LAKELAND BOULEVARD

DESIGNED	DRAWN	TRACED	CHECKED	REVIEWED DATE	REVISED
RJB	JNV		RBB	WAC 4/19/91	