

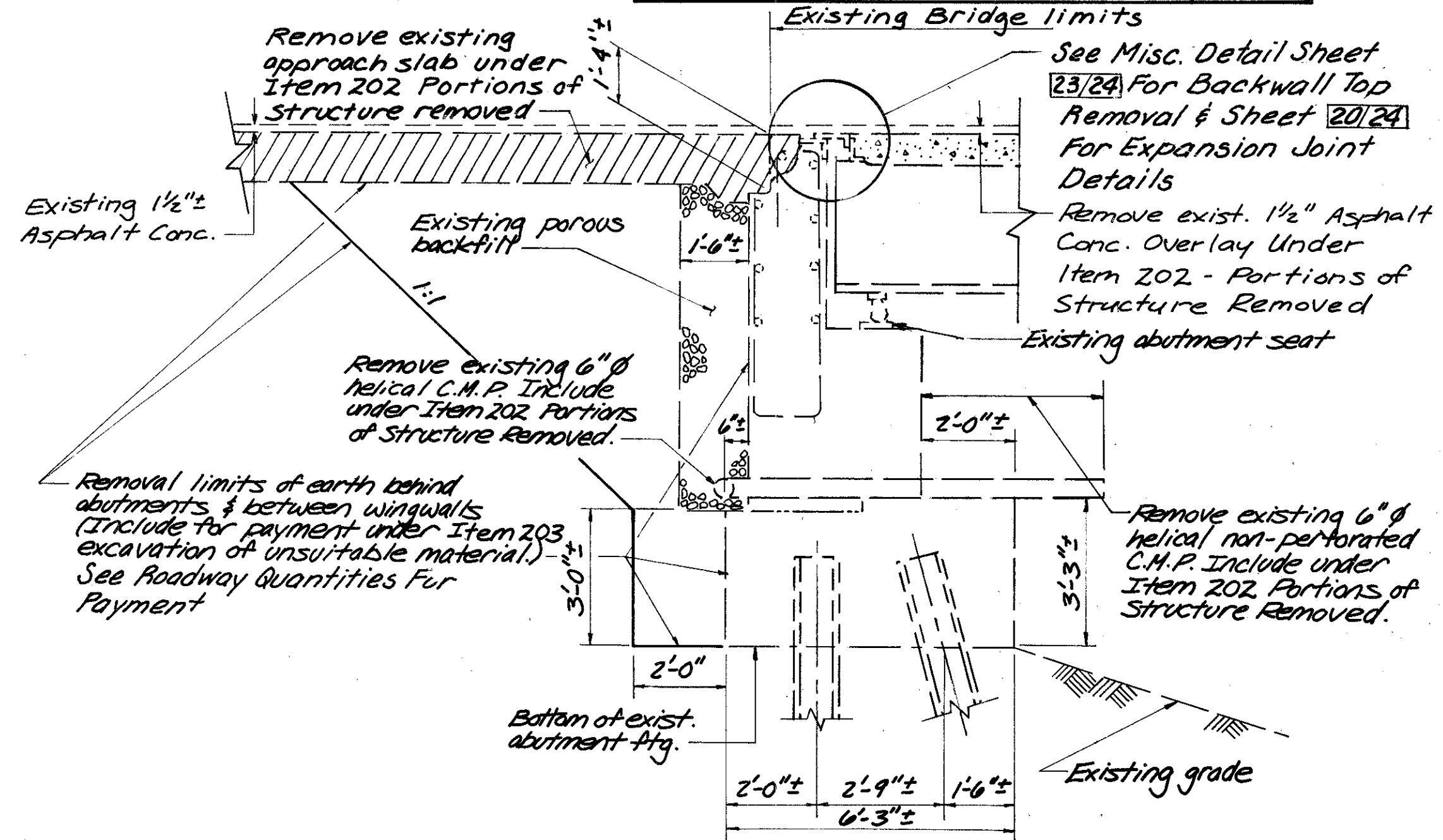
SOUTHBOUND

Summary of Repair Quantities

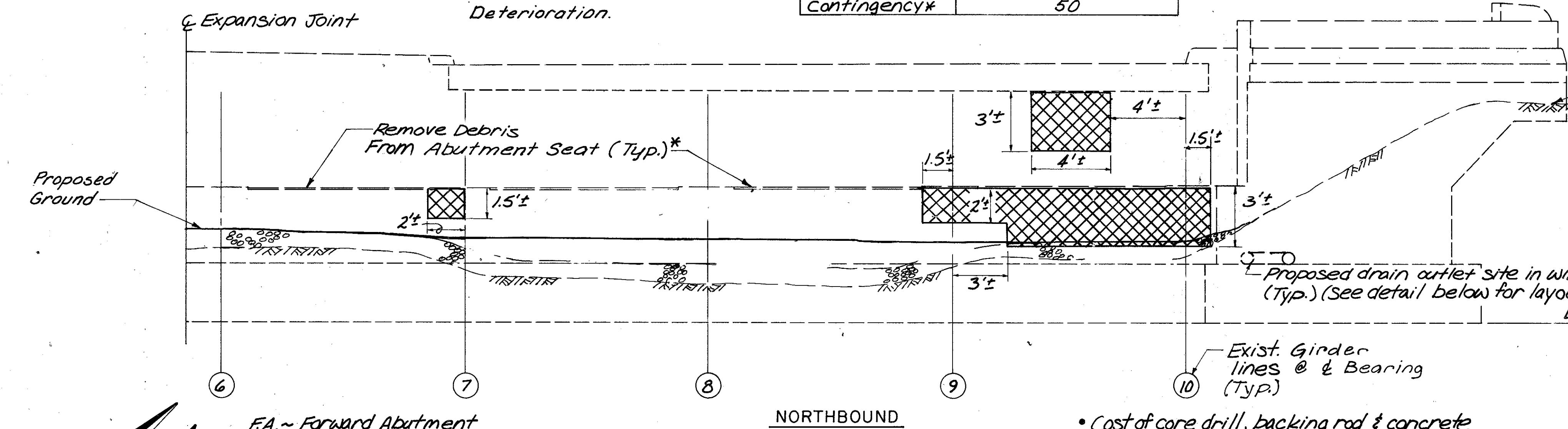
Location	Estimated Quantities (S.F.)
Rear Abutment	-
Forward Abutment	212
Contingency*	50

No Deterioration Apparent on Rear Abutment.

Estimated Quantity Has Been Increased By 50 S.F. Over Measured Quantities To Allow For Additional Deterioration.

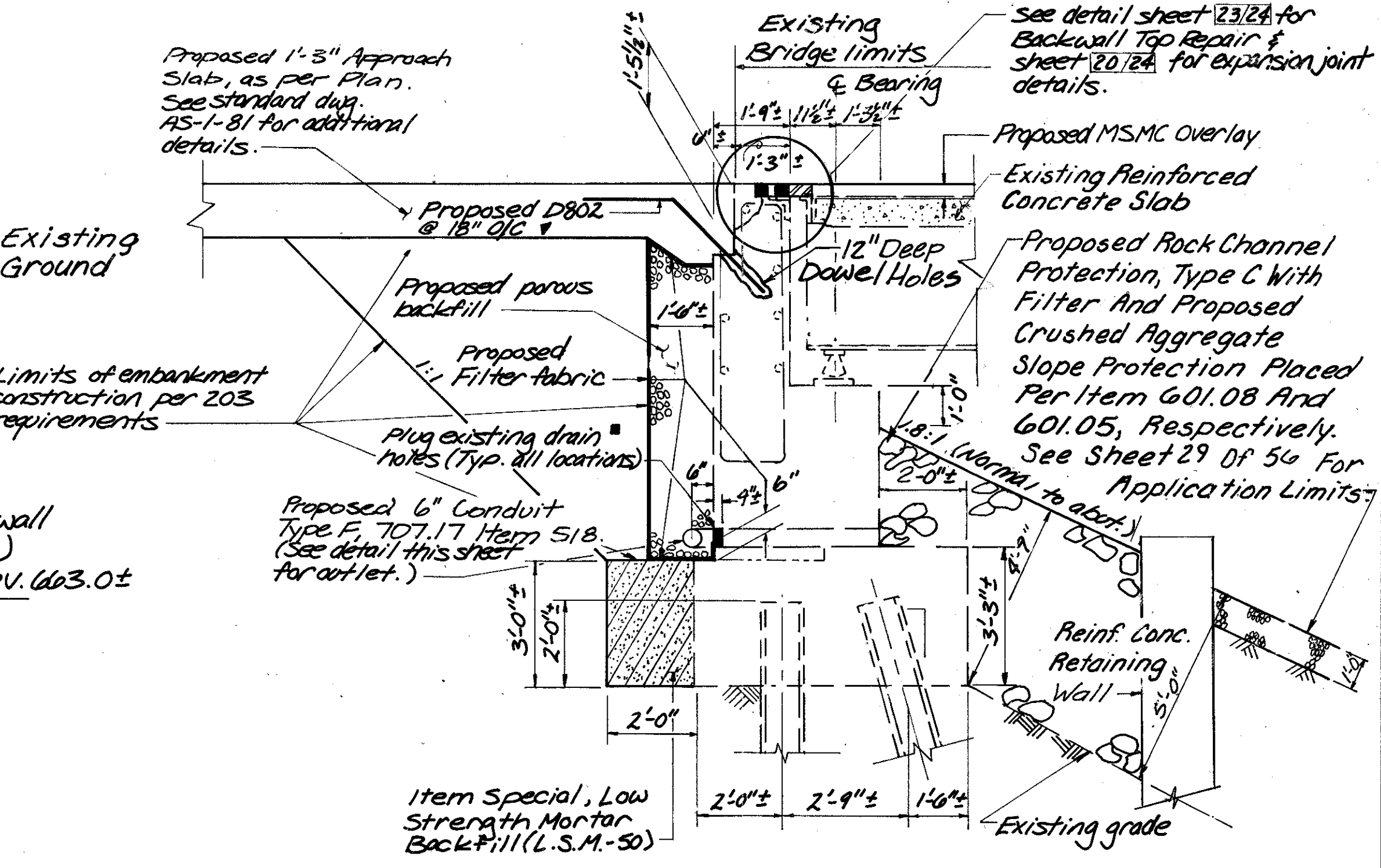


EXISTING SECTION A-A  
(TYP. BOTH ABUTMENTS)

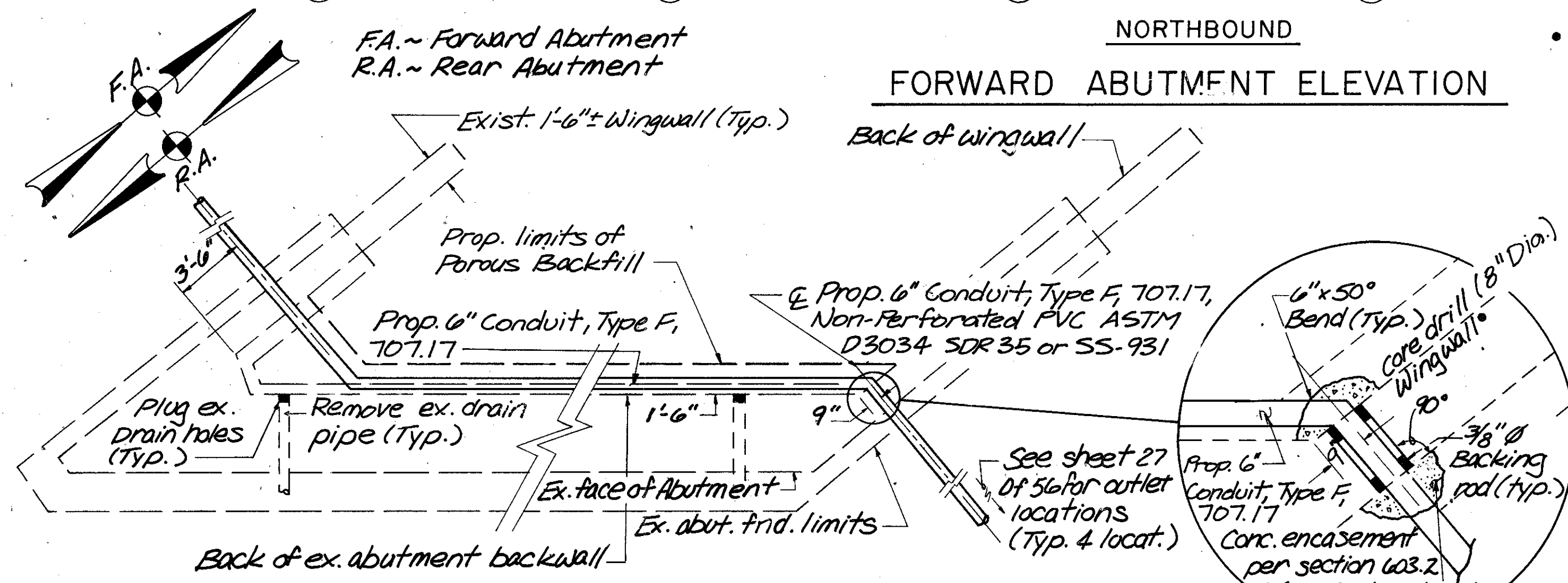


NORTHBOUND

FORWARD ABUTMENT ELEVATION



PROPOSED SECTION A-A  
(TYP. BOTH ABUTMENTS)



PROPOSED ABUTMENT DRAIN OUTLET DETAIL  
(See prop. section A-A above for further information.)

\* Cost of core drill, backing rod & concrete encasement to be included in cost per lineal foot of Item 518 - Structure Drainage, Misc.: 6" Conduit, Type F, 707.17, Non-perforated PVC, ASTM D3034 SDR 35 or SS 931.

Physical inventory of measured quantities of deterioration was performed in January 1991.

\* Engineer shall sound abutment seats after debris is removed. Any unsound or delaminated concrete shall be patched per item 519 - Patching Concrete Structures, as per plan, or Item Special - Trowelable Mortar, Where Appropriate. A Contingency Quantity Of 50 S.F. For Each Pay Item Has Been Included For Both Abutments To Be Used As Directed By The Engineer.

- LEGEND
- ▣ Indicates area to be patched per Item 519 - Patching Concrete Structures as per plan.
  - ▨ Indicates area to be removed per item 202 - Portions of Structure Removed.
  - ▩ Indicates area to be backfilled with Item - Special - Low Strength Mortar Backfill Material, Class LSM - 50.
  - ▼ Include D802 Bars with Approach Slab, As Per Plan For Payment.

Burgess & Niple, Limited **bn** 15 / 24  
Engineers and Architects

ABUTMENT REPAIRS & DETAILS  
BRIDGE NO. LAK-91-0423  
S.R. 91 OVER N & W R.R. & CONRAIL R.R.

DESIGNED	DRAWN	TRACED	CHECKED	REVIEWED DATE	REVISED
RJB	KFK		RBB	WAC 4/19/91	