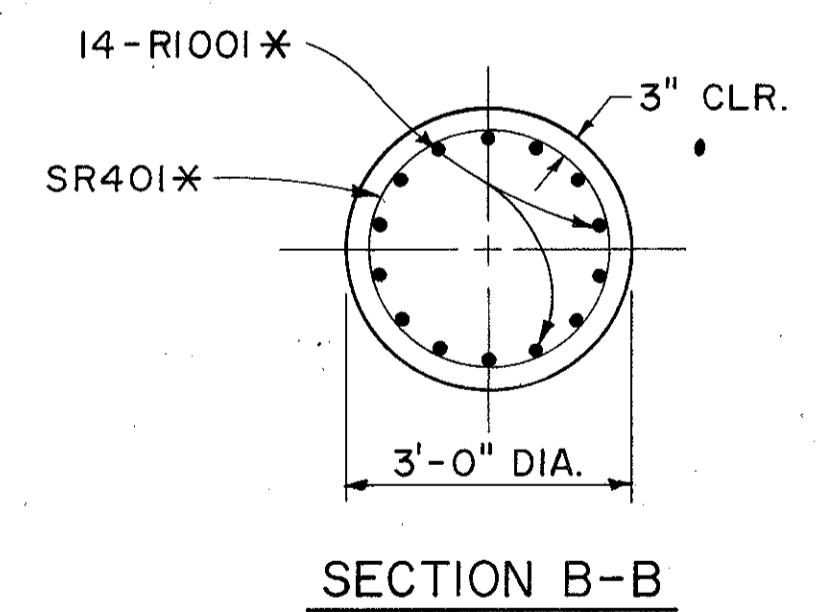
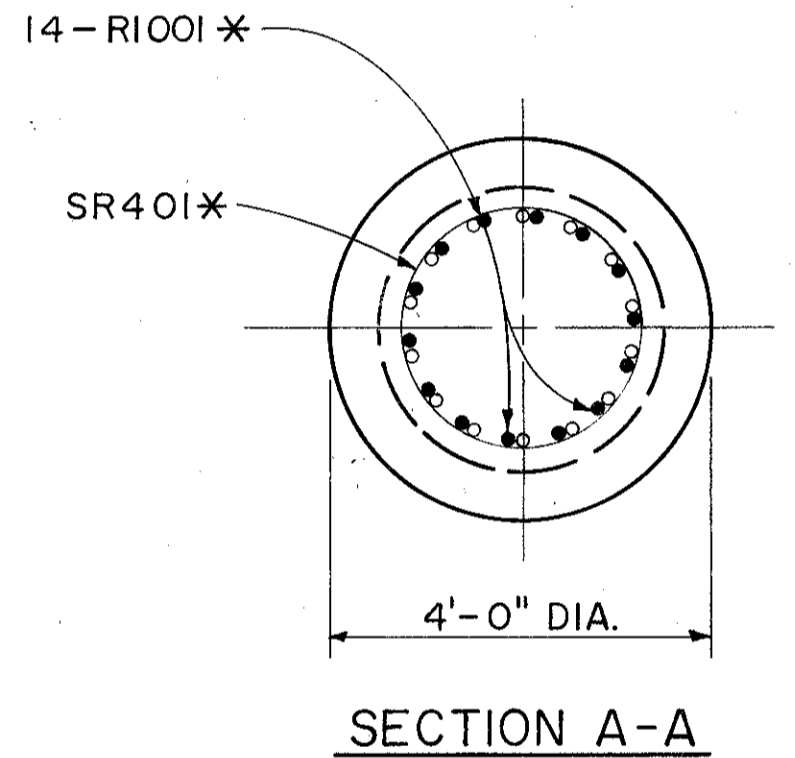
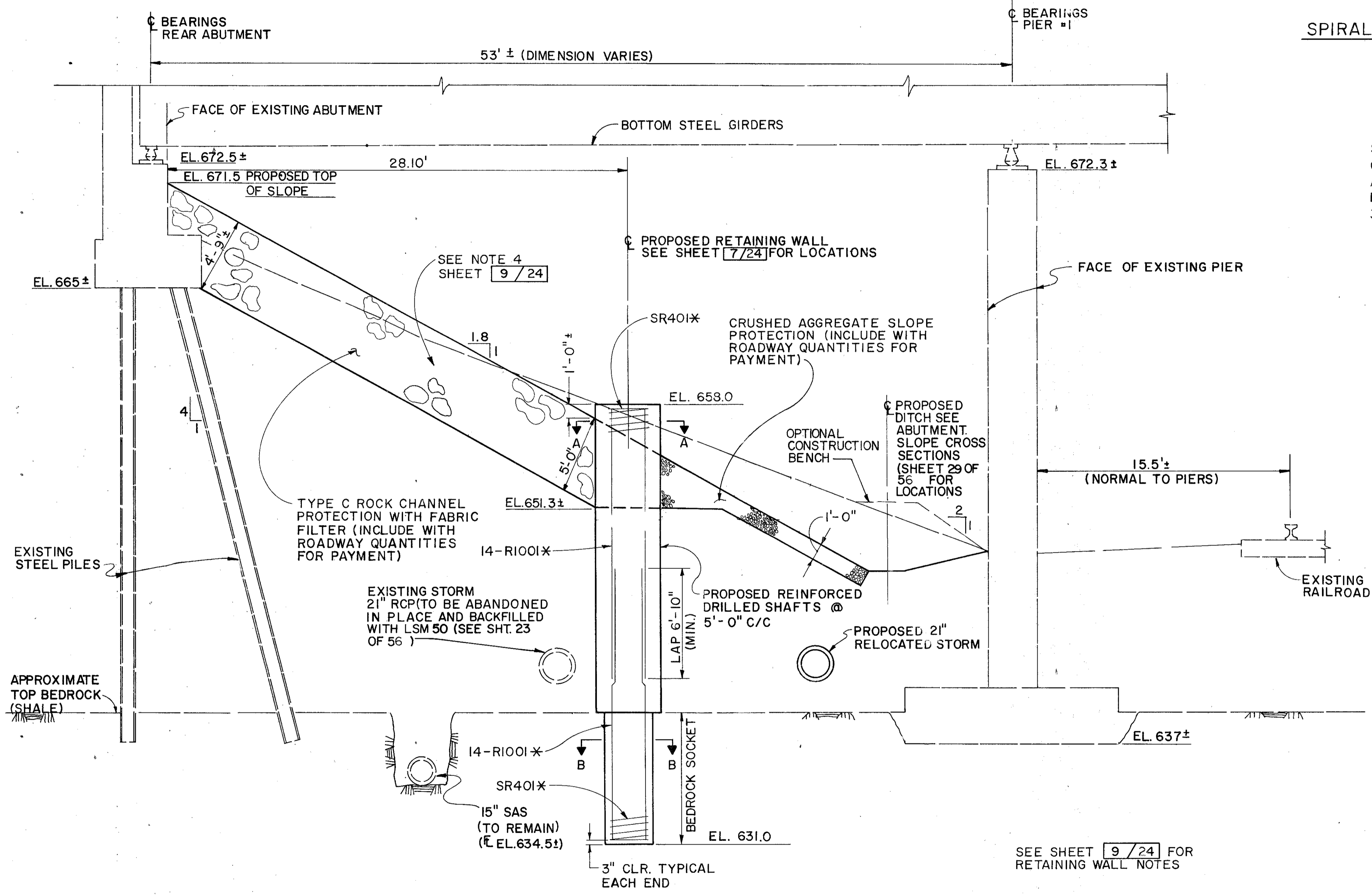


DRILLED SHAFT EPOXY STEEL LIST							
MARK	NO.	LENGTH	WEIGHT	TYPE	A	B	C
SR401	70	13'-3"	17,759	SPIRAL	2'-6"	4 1/2"	38.3
SR402	70	14'-3"	19,012	SPIRAL	2'-6"	4 1/2"	41.0
R1001	964	16'-8"	69,135	STRAIGHT			
R1002	964	17'-8"	73,283	STRAIGHT			
T1801	8	29'-5"	3201	I	26'-6"		
T1802	8	31'-5"	3418	I	28'-6"		
EPOXY COATED TOTAL =			185,808				

THESE LENGTHS AND WEIGHTS ARE ESTIMATED T18 BARS FOR TEST SHAFTS AND SHALL NOT BE SPLICED SEE SHEET 10/24

SPIRAL REINFORCEMENT BARS: THE "LENGTH" SHOWN IN THE STEEL LIST FOR THE SPIRAL BARS IS THE LENGTH OF THE SPIRAL ALONG THE AXIS OF THE SPIRAL. FOUR STEEL CHANNEL, TEE OR ANGLE SPACERS, WEIGHING APPROXIMATELY 0.80 LB. PER LIN. FT. OF SPACER, SHALL BE PROVIDED FOR EACH SPIRAL UNIT. THEY SHALL BE EQUALLY SPACED ALONG THE PERIPHERY OF THE COILS. THE NUMBER OF POUNDS OF THESE SPACERS, BASED ON 3.20 PER LIN. FT. IS INCLUDED IN THE TABULATED WEIGHT OF SPIRAL BARS.



* FOR PAYMENT, THESE BARS ARE INCLUDED IN ITEM SPECIAL - DRILLED SHAFTS

PROPOSED EMBANKMENT SECTION A-A
(NORMAL TO SUBSTRUCTURE UNITS)

SEE SHEET 9/24 FOR RETAINING WALL NOTES

Burgess & Niple, Limited		Engineers and Architects		bn		8 / 24	
EMBANKMENT STABILIZATION DETAILS REAR ABUTMENT BRIDGE NO. LAK-91-0423 S.R. 91 OVER N.&W.R.R. & CONRAIL R.R.							
DESIGNED	DRAWN	TRACED	CHECKED	REVIEWED DATE	REVISED		
VEA	CL		R.G.	2-24-12			