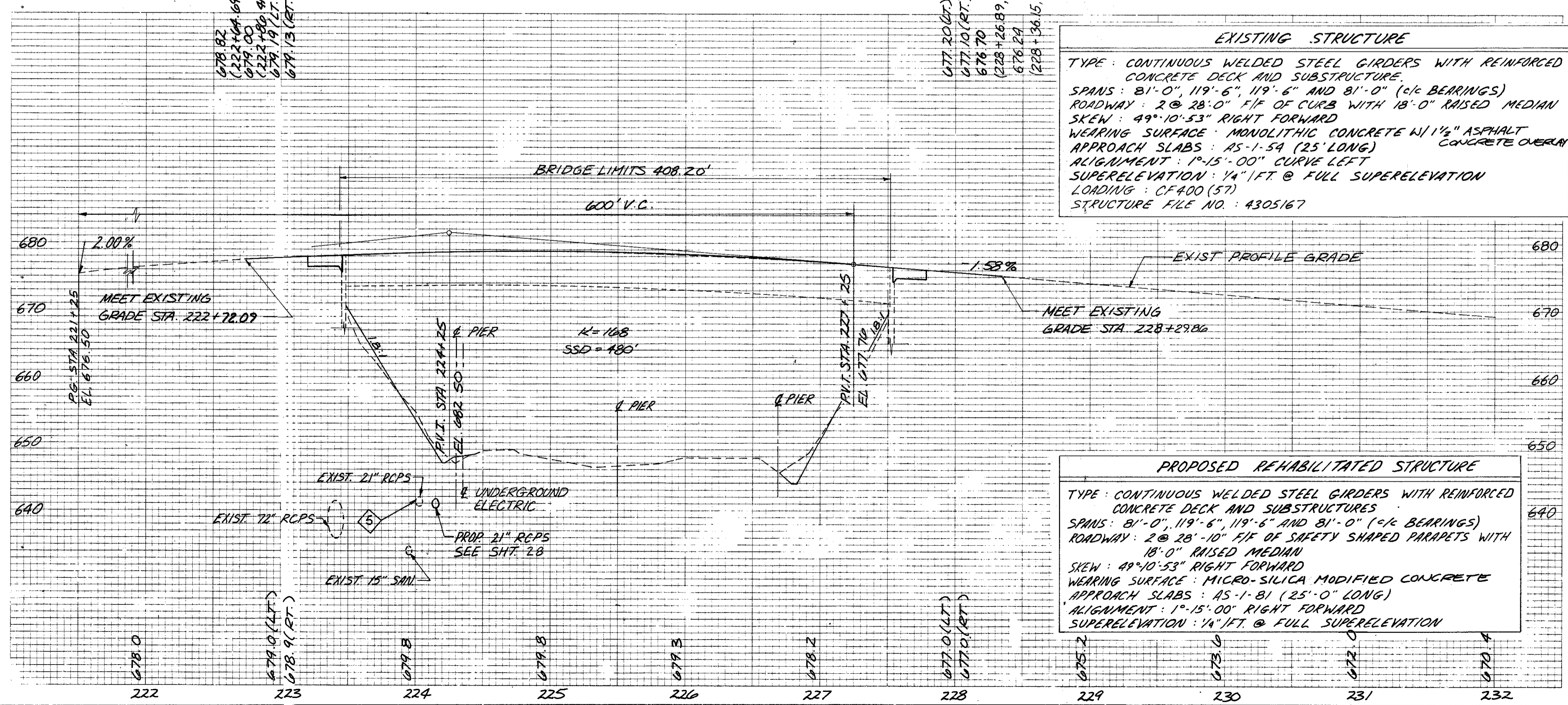


EXISTING STRUCTURE
 TYPE: CONTINUOUS WELDED STEEL GIRDERS WITH REINFORCED CONCRETE DECK AND SUBSTRUCTURE.
 SPANS: 81'-0", 119'-6", 119'-6" AND 81'-0" (C/G BEARINGS)
 ROADWAY: 2 @ 28'-0" F/F OF CURB WITH 18'-0" RAISED MEDIUM SKEW: 49°10'53" RIGHT FORWARD
 WEARING SURFACE: MONOLITHIC CONCRETE W/ 1 1/2" ASPHALT CONCRETE OVERLAY
 APPROACH SLABS: 15'-1.54' (25' LONG)
 ALIGNMENT: 1°-15'-00" CURVE LEFT
 SUPERELEVATION: 1/4" FT. @ FULL SUPERELEVATION
 LOADING: CF400 (57)
 STRUCTURE FILE NO.: 4305167

PROPOSED REHABILITATED STRUCTURE
 TYPE: CONTINUOUS WELDED STEEL GIRDERS WITH REINFORCED CONCRETE DECK AND SUBSTRUCTURES
 SPANS: 81'-0", 119'-6", 119'-6" AND 81'-0" (C/G BEARINGS)
 ROADWAY: 2 @ 28'-10" F/F OF SAFETY SHAPED PARAPETS WITH 18'-0" RAISED MEDIUM SKEW: 49°10'53" RIGHT FORWARD
 WEARING SURFACE: MICRO-SILICA MODIFIED CONCRETE
 APPROACH SLABS: 15'-1.81' (25'-0" LONG)
 ALIGNMENT: 1°-15'-00" RIGHT FORWARD
 SUPERELEVATION: 1/4" FT. @ FULL SUPERELEVATION

NOTE: FOR SOUTH AND NORTH BASELINE REFERENCE POINTS, SEE SHT. 28

BM #1 RIR SPIKE IN N/E SIDE OF POWER POLE EL. 651.06



REF	LOCATION	C.Y.	LIN. FT.	EACH	LIN. FT.	LIN. FT.	EACH	EACH
R-1								
R-2	@ STA. 0+87.5 TO 3+62, RT.	25						
R-3	STA 221+33.27 TO 222+83.27, LT		137.5	1		137.5		1
R-4	STA 222+27.59 TO 223+77.59, RT.		137.5	1		125	1	
R-5	STA 227+24.53 TO 228+74.53, LT		137.5	1		125	1	
R-6	STA 228+18.83 TO 229+68.83, RT		137.5	1		137.5		1
R-7	STA 223+12.09 TO 223+22.09				20			
R-8	STA 227+79.86 TO 227+89.86				20			
TOTALS		25	550	4	40	525	2	2

REF	LOCATION	C.Y.	LIN. FT.	EACH	LIN. FT.	C.Y.	LIN. FT.	LIN. FT.
D-1	STA 228+06, 9' RT.			1				
D-2	STA 228+06 TO 228+50				49			
D-3	STA 228+50, 115 RT.	3				0.2		
D-4	STA 223+02.57 TO 223+12.57						10	
D-5	@ STA 1+16.14 TO 3+66.14, 12' RT							250
D-6	STA 223+21.09 TO 223+31.09						10	
D-7	@ STA 1+16.14, 12' RT.					0.37		
D-8	@ STA 3+66.14, 12' RT.					0.37		
D-9	@ STA 3+66.14 TO 3+80.14, 12 RT.	17						
*D-10	STA 228+50, RT.		82					
TOTALS		20	82	1	49	0.94	20	250

* BENDS & BRANCHES, 1'-12" x 45°, 2'-12" x 45°