

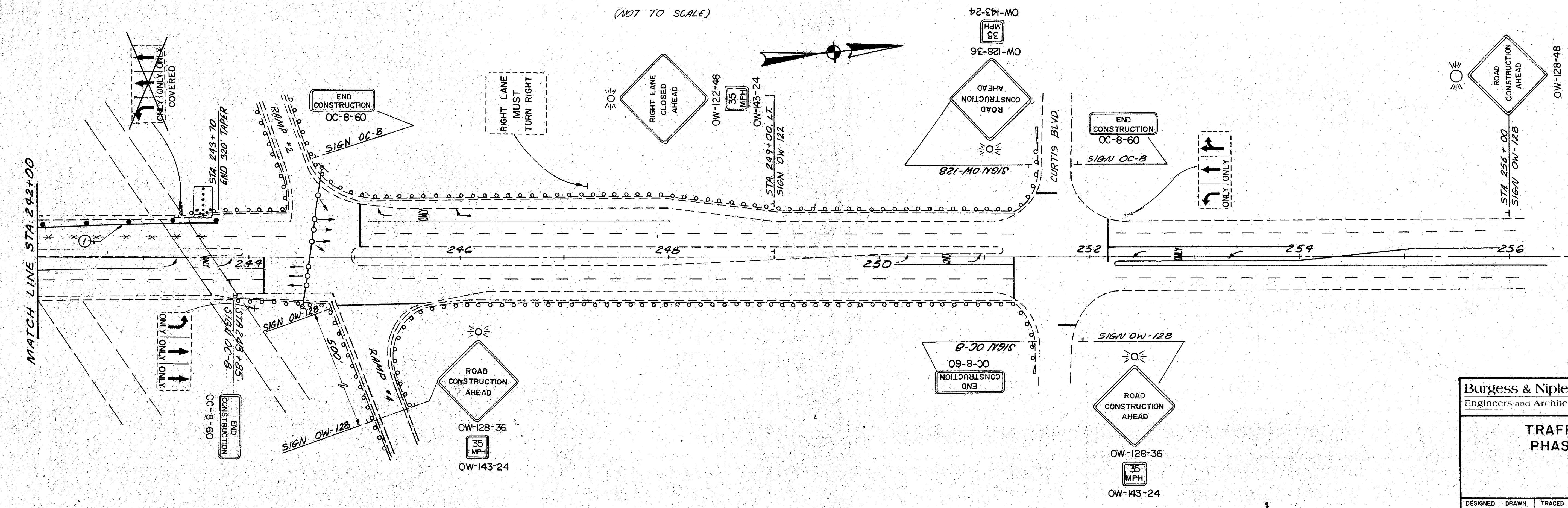
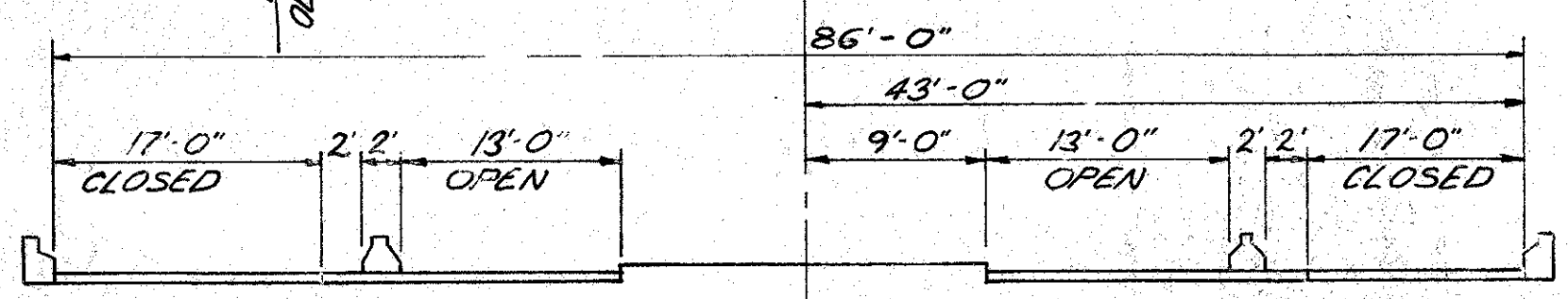
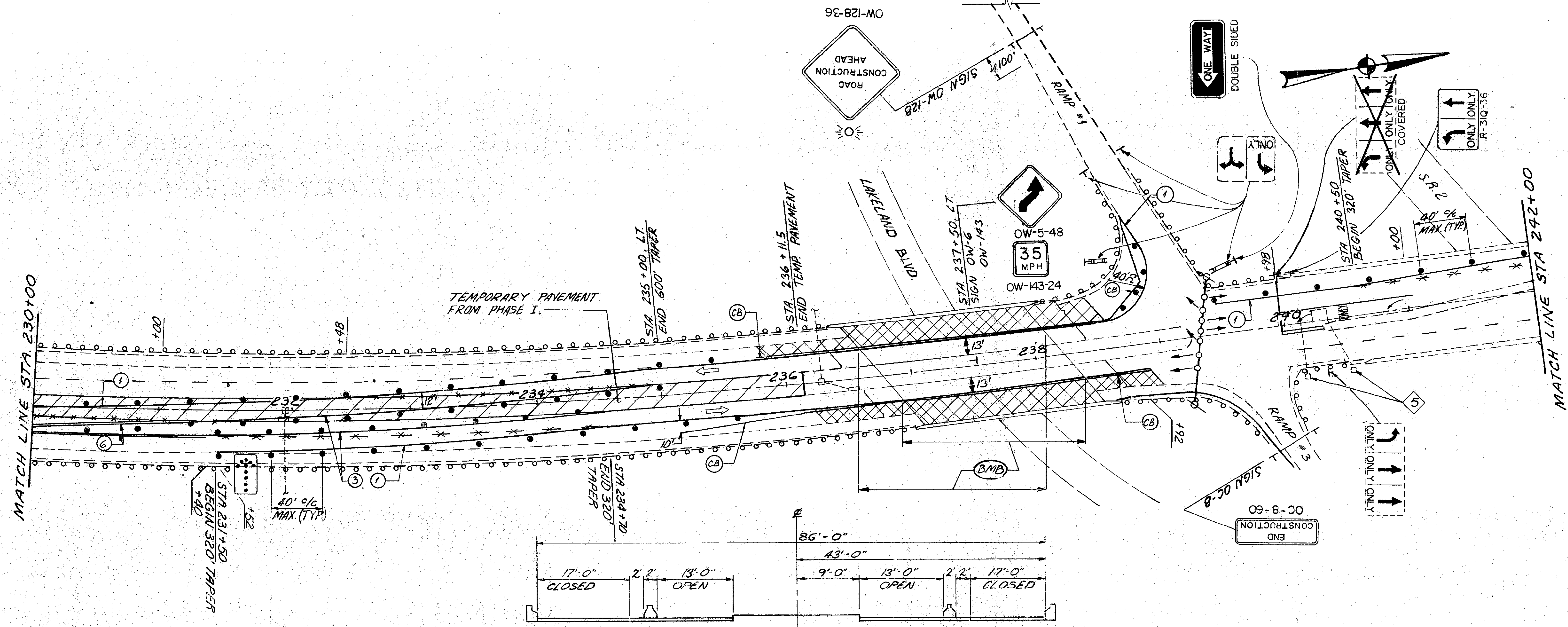
LEGEND

- ① TEMPORARY WHITE EDGE LINE
- ② TEMPORARY CHANNELIZING LINE
- ③ TEMPORARY YELLOW EDGE LINE
- ④ TEMPORARY LANE ARROW
- ⑤ TEMPORARY WORD ON PAVEMENT
- CB PORTABLE CONCRETE BARRIER 32"
- ⑥ TEMPORARY CENTER LINE
- BMB ITEM 622 PORTABLE CONCRETE BARRIER, 32", BRIDGE MOUNTED, AS PER PLAN.

- TEMPORARY PAVEMENT
- WORK ZONE

NOTE: SEE PORTABLE CONCRETE BARRIER SUB SUMMARY, SHT. 17 FOR STATION LIMITS OF ALL PORTABLE CONCRETE BARRIERS.

EXISTING LOOP DETECTORS TO BE RECONNECTED AT PULL BOX FOR PHASE II CONSTRUCTION.



Burgess & Niple, Limited Engineers and Architects

**TRAFFIC CONTROL
PHASE II**

DESIGNED	DRAWN	TRACED	CHECKED	REVIEWED DATE	REVISED