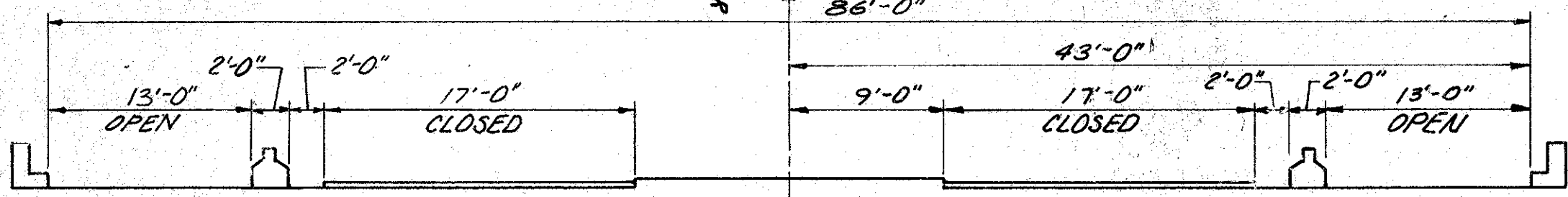
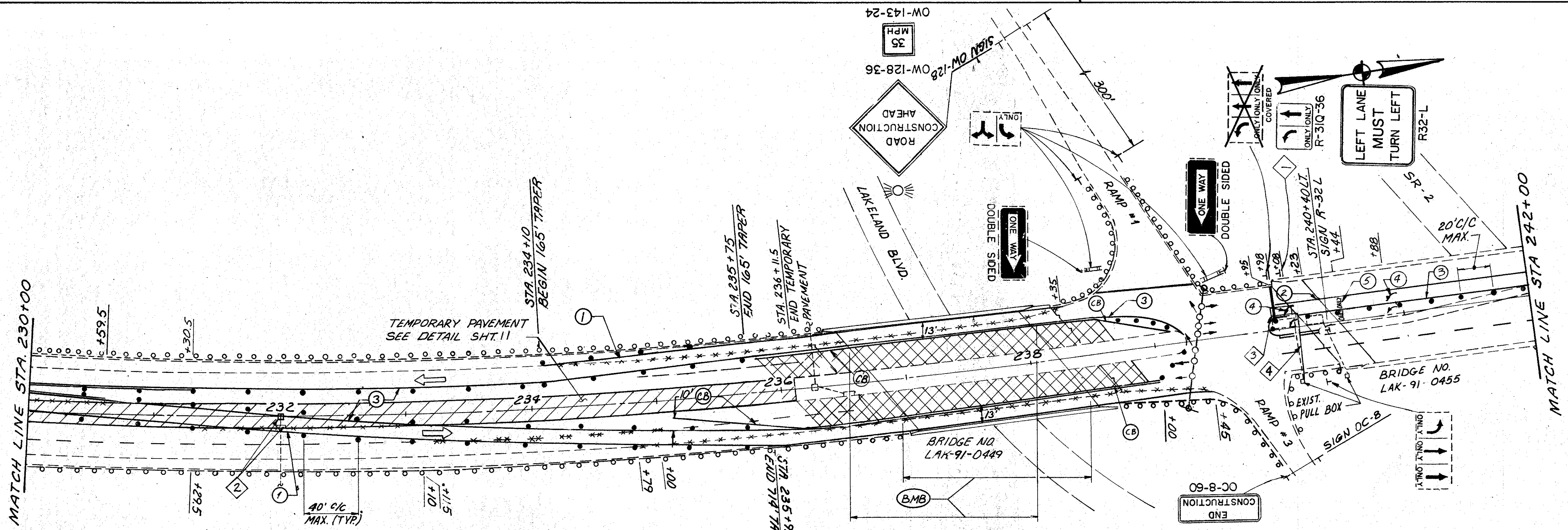


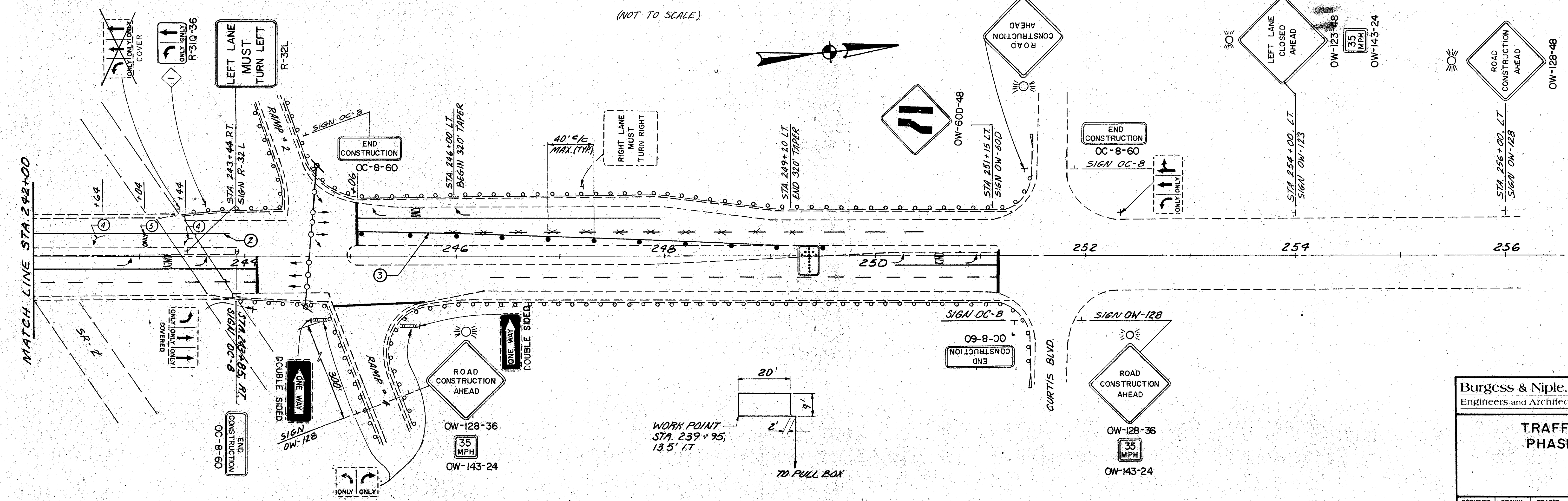
LEGEND

- ① TEMPORARY WHITE EDGE LINE
 - ② TEMPORARY CHANNELIZING LINE
 - ③ TEMPORARY YELLOW EDGE LINE
 - ④ TEMPORARY LANE ARROW
 - ⑤ TEMPORARY WORD ON PAVEMENT
 - (CB) PORTABLE CONCRETE BARRIER
 - ▨ TEMPORARY PAVEMENT
 - ▩ WORK ZONE
 - (BMB) ITEM 622 PORTABLE CONCRETE BARRIER, 32" BRIDGE MOUNTED, AS PER PLAN.
- ① ERECT R-31Q-36 REGULATORY SIGN BEFORE BEGINNING OF CONSTRUCTION PHASE I SIGN TO BE REMOVED UPON COMPLETION OF CONSTRUCTION PHASE I
 - ② SEE MAINTENANCE OF TRAFFIC NOTES ITEM 604, SHT. 11 AND TEMPORARY PAVEMENT DETAILS SHT. 13
 - ③ TEMPORARY LOOP DETECTOR TO BE PAID FOR UNDER ITEM 614-MAINTAINING TRAFFIC. SEE MAINTENANCE OF TRAFFIC NOTES, SHT. 10
 - ④ SEE TEMPORARY LOOP DETECTOR DETAIL, THIS SHEET

NOTE: SEE PORTABLE CONCRETE BARRIER SUB-SUMMARY SHT. 17, FOR STATION LIMITS OF ALL PORTABLE CONCRETE BARRIERS.



TYPICAL HALF BRIDGE OVERLAY AND PARAPET CONSTRUCTION, PHASE I
(NOT TO SCALE)



TEMPORARY LOOP DETECTOR DETAIL
SCALE: 1" = 20'

Burgess & Niple, Limited
Engineers and Architects

TRAFFIC CONTROL PHASE I

DESIGNED	DRAWN	TRACED	CHECKED	REVIEWED	DATE	REVISED
----------	-------	--------	---------	----------	------	---------