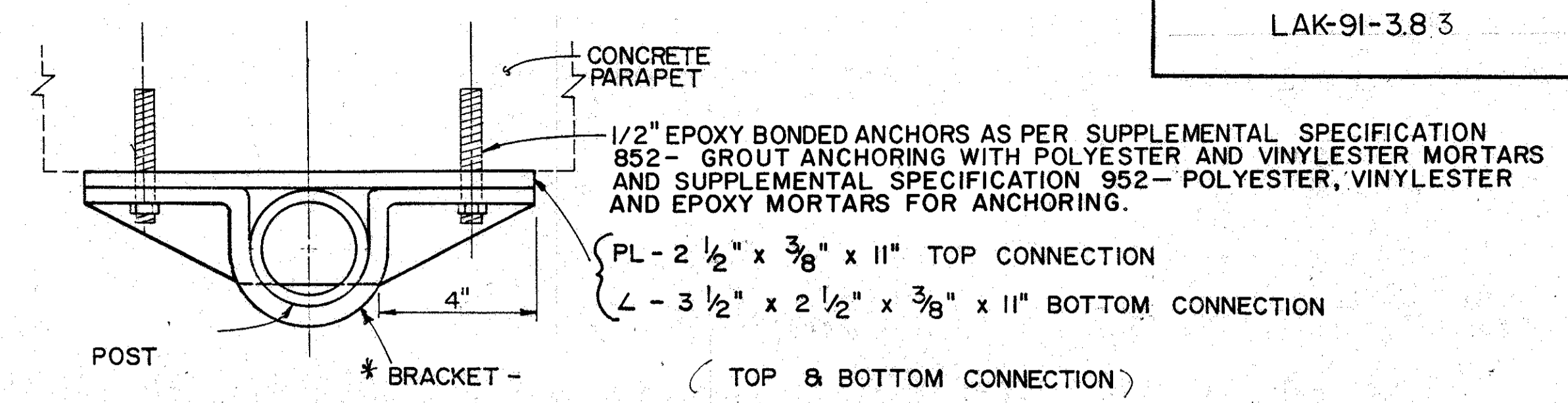
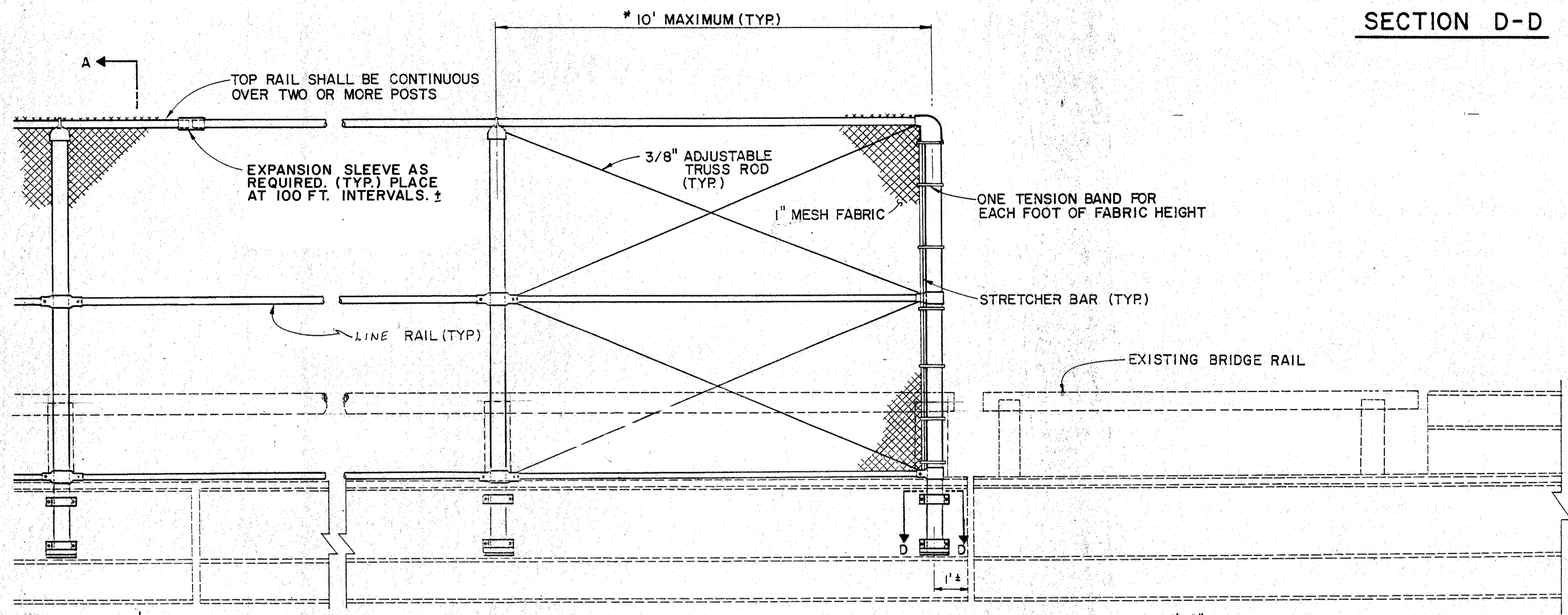


* FENCE POST TO BE PLACED AT EACH RAIL POST LOCATION.



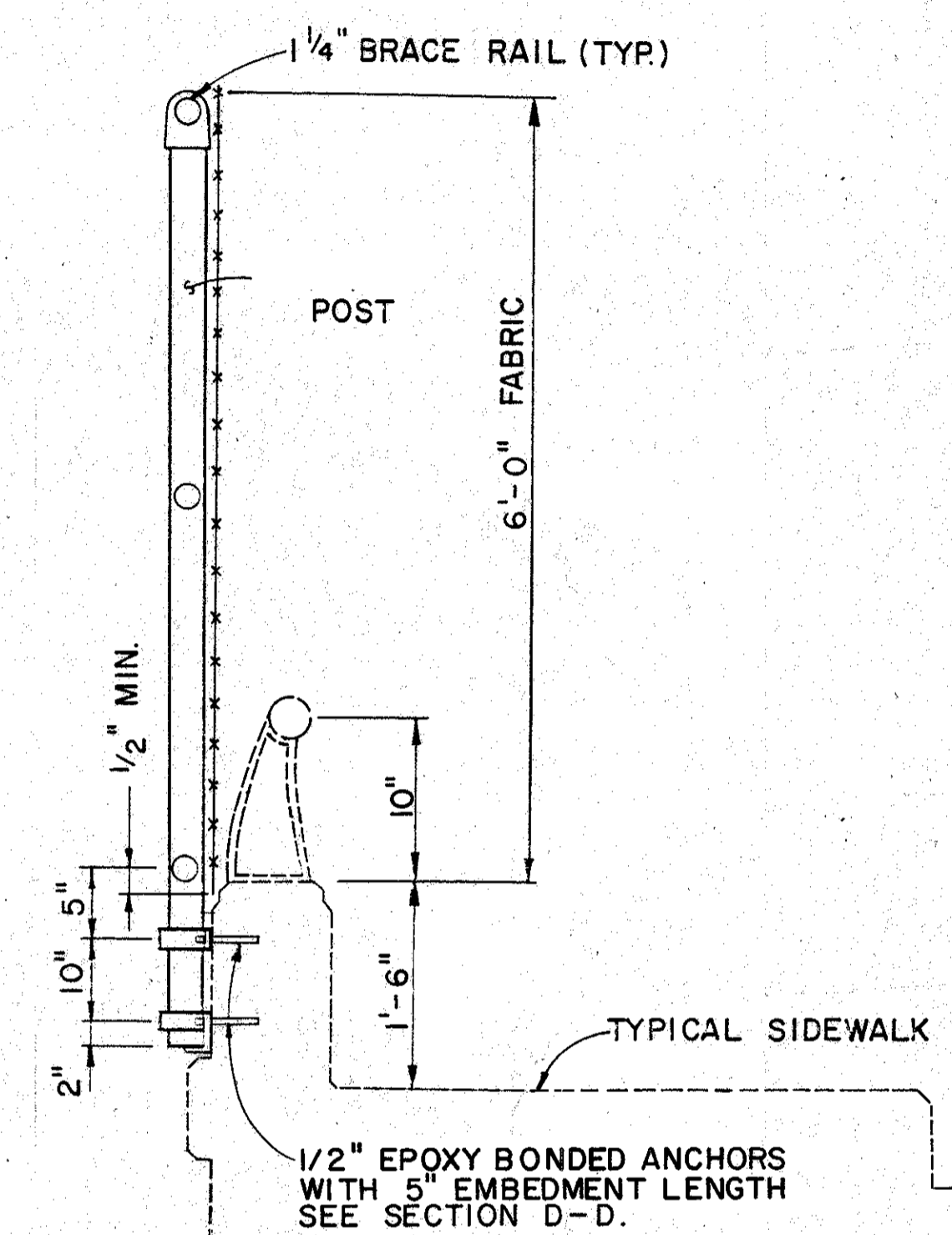
SECTION D-D

* Galvanized per 711.02 include w/ fence for payment

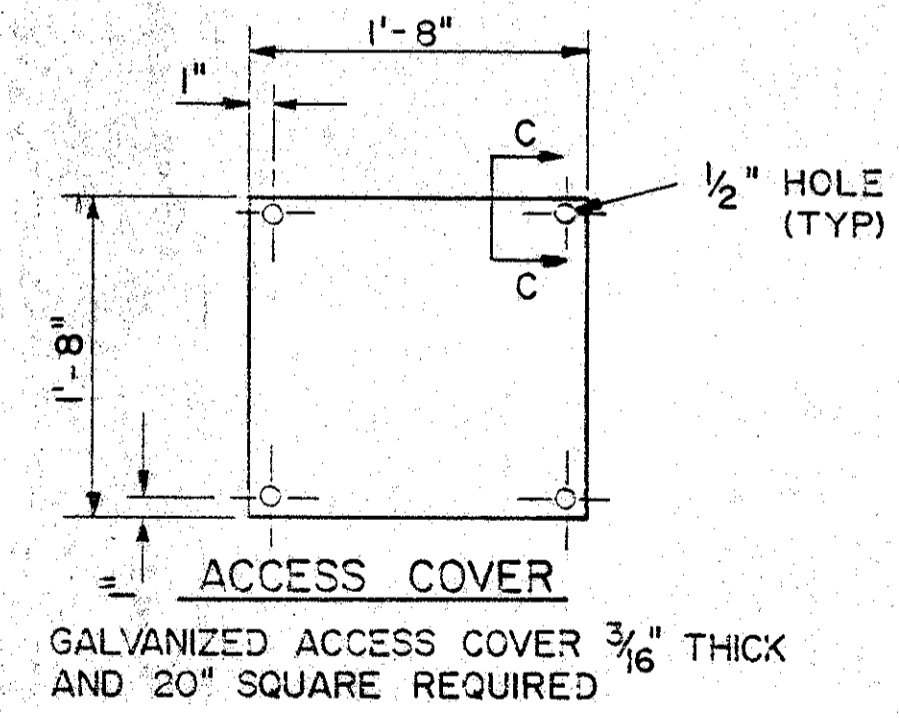


OUTSIDE ELEVATION

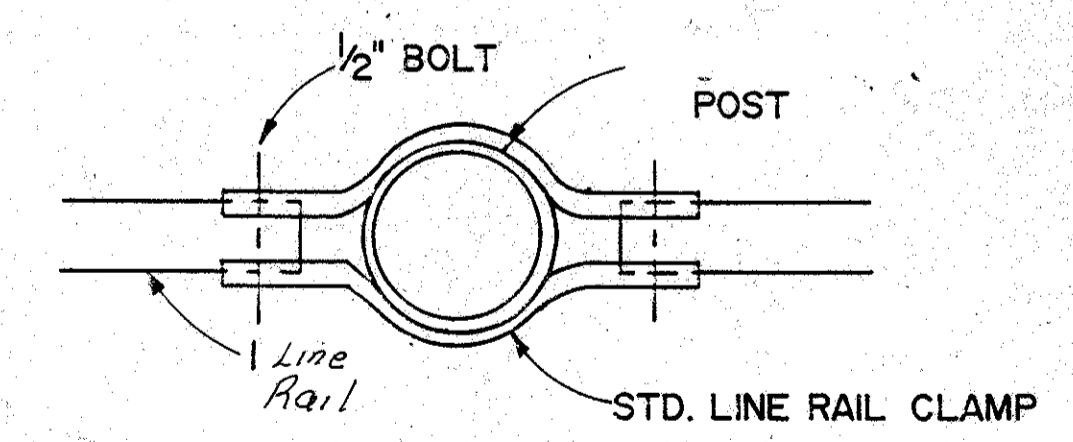
For additional details and notes, refer to Std. Dwg. VPF-1-90 dated 9/26/90



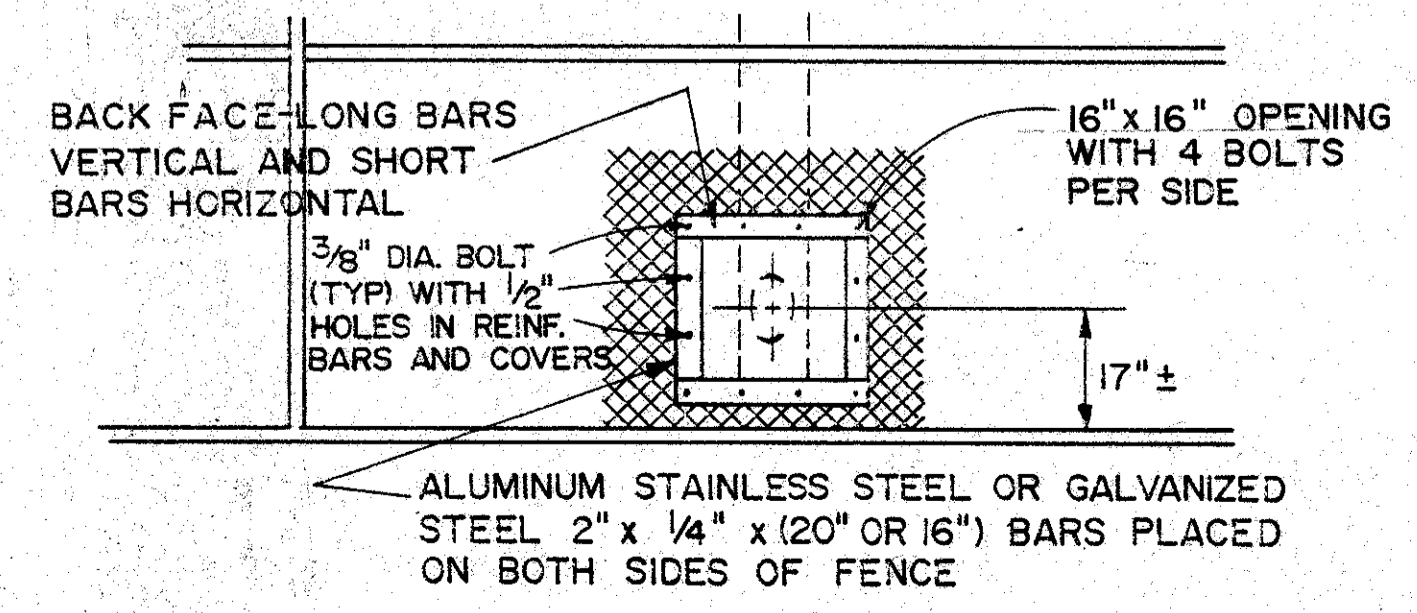
SECTION A-A



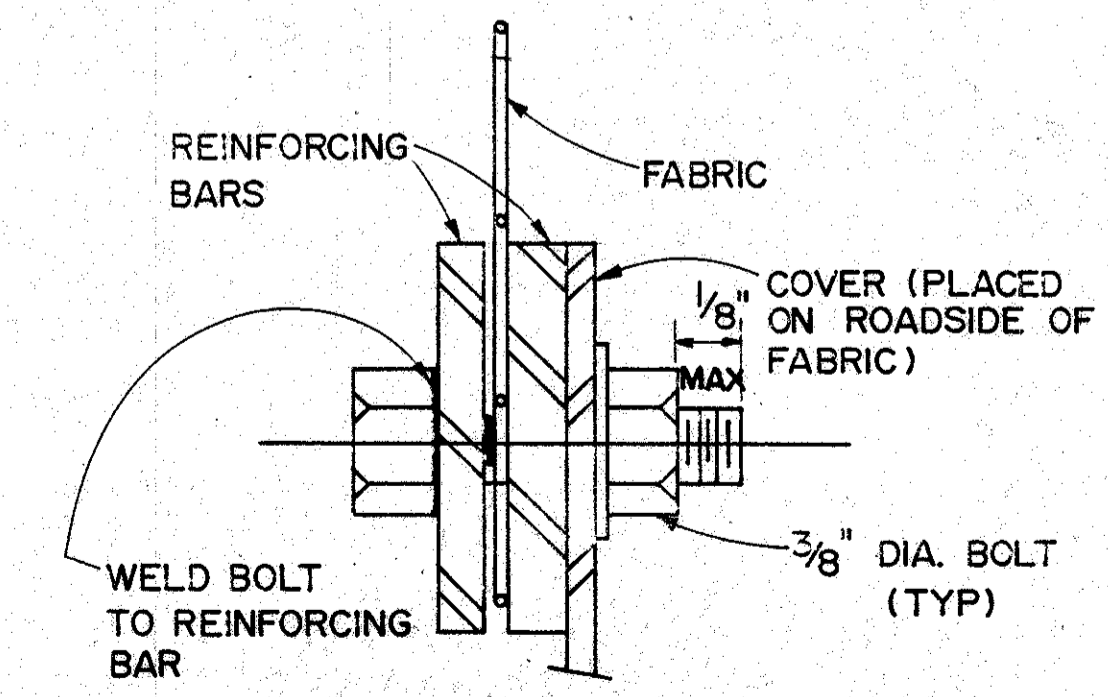
ACCESS COVER
GALVANIZED ACCESS COVER 3/16" THICK AND 20" SQUARE REQUIRED



SECTION B-B



INSIDE ELEVATION
DETAIL AT LIGHT POLE



SECTION C-C

STATE OF OHIO DEPARTMENT OF TRANSPORTATION DISTRICT 12 BRIDGE DEPARTMENT						5A/8
OUTSIDE PARAPET VERTICAL (OPV) FENCE DETAIL						
BRIDGE NO. LAK-91-0455						
SR 91 OVER SR.2						
DESIGNED	DRAWN	TRACED	CHECKED	REVIEWED	DATE	REVISED
SJS	JNV		WAC			