

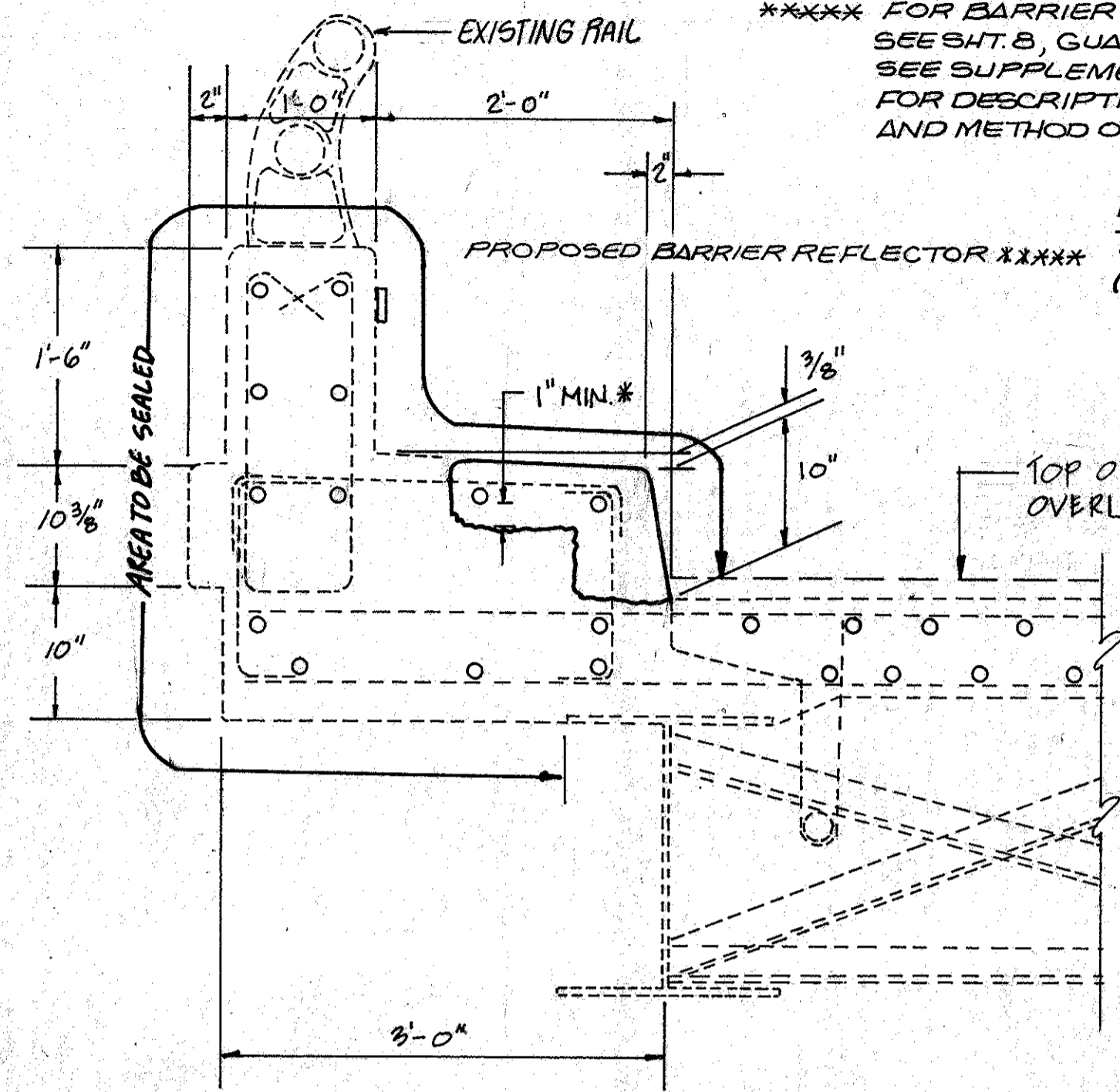
* FOR CONCRETE PATCHING, EXISTING CONCRETE SHALL BE REMOVED TO A DEPTH OF 1" BEHIND THE OUTER ROW OF REINFORCING STEEL OR TO WHERE ONLY SOLID CONCRETE REMAINS, WHICHEVER IS GREATER. MINIMUM PATCH DEPTH, TO BE AS DESCRIBED IN ITEM 519.03 (CURBS & SIDEWALKS ONLY)

**EXISTING CONCRETE MEDIAN SHALL BE REMOVED TO A DEPTH OF 9" (ORIGINAL CONSTRUCTION JOINT DEPTH) OR TO WHERE ONLY SOLID CONCRETE REMAINS, WHICHEVER IS GREATER. NEW CONCRETE MEDIAN SHALL BE ITEM S11 CLASS 'S' CONCRETE AS PER PLAN

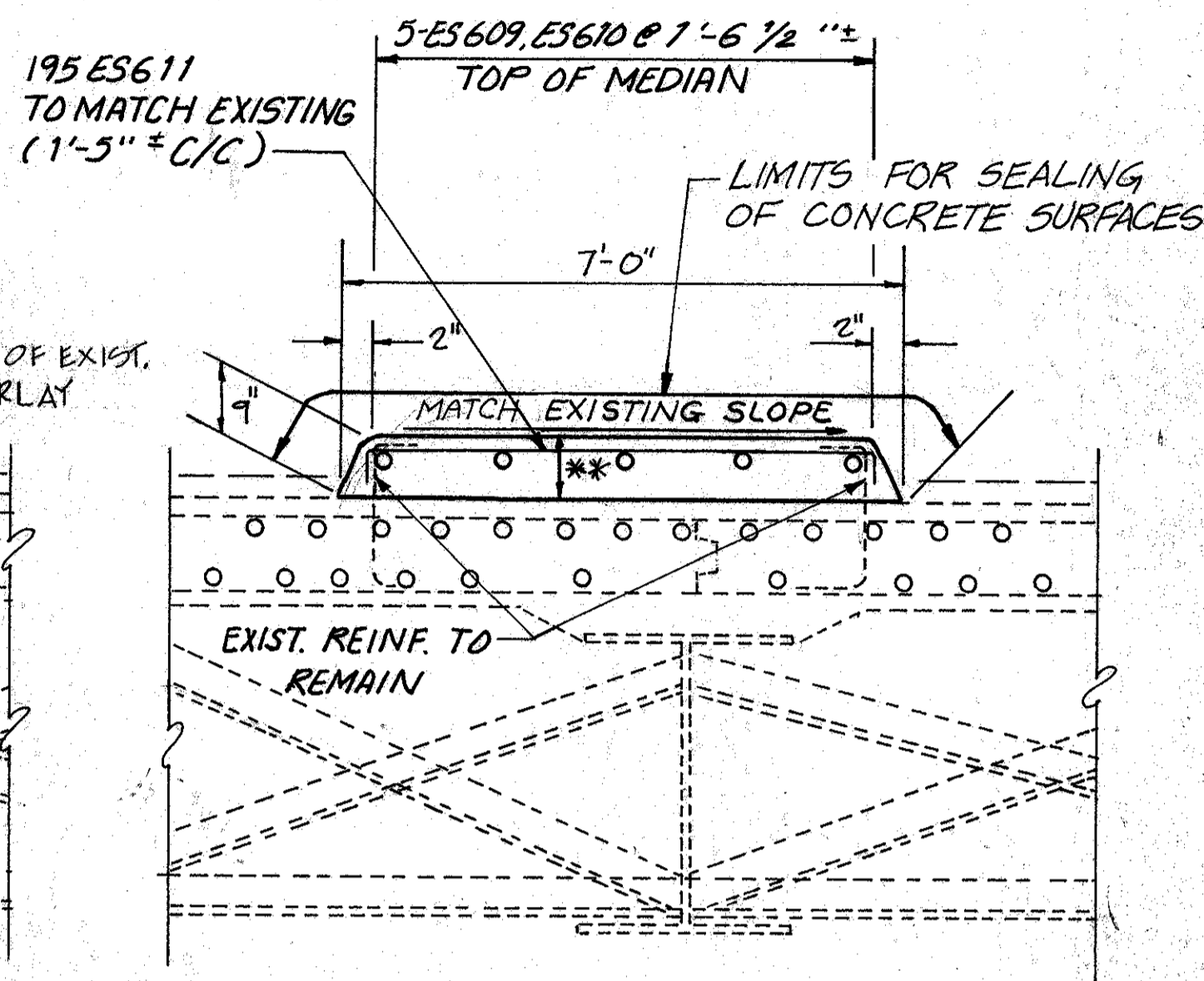
***** FOR BARRIER REFLECTOR QUANTITIES, SEE SHT. 8, GUARDRAIL REPLACEMENT. SEE SUPPLEMENTAL SPECIFICATION 802 FOR DESCRIPTION, MATERIALS INSTALLATION AND METHOD OF MEASUREMENT.

SEE ITEM SPECIAL - SOUNDING CONCRETE BRIDGE COMPONENT, AND ITEM SPECIAL - PATCHING CONCRETE STRUCTURE WITH TROWELABLE MORTAR.

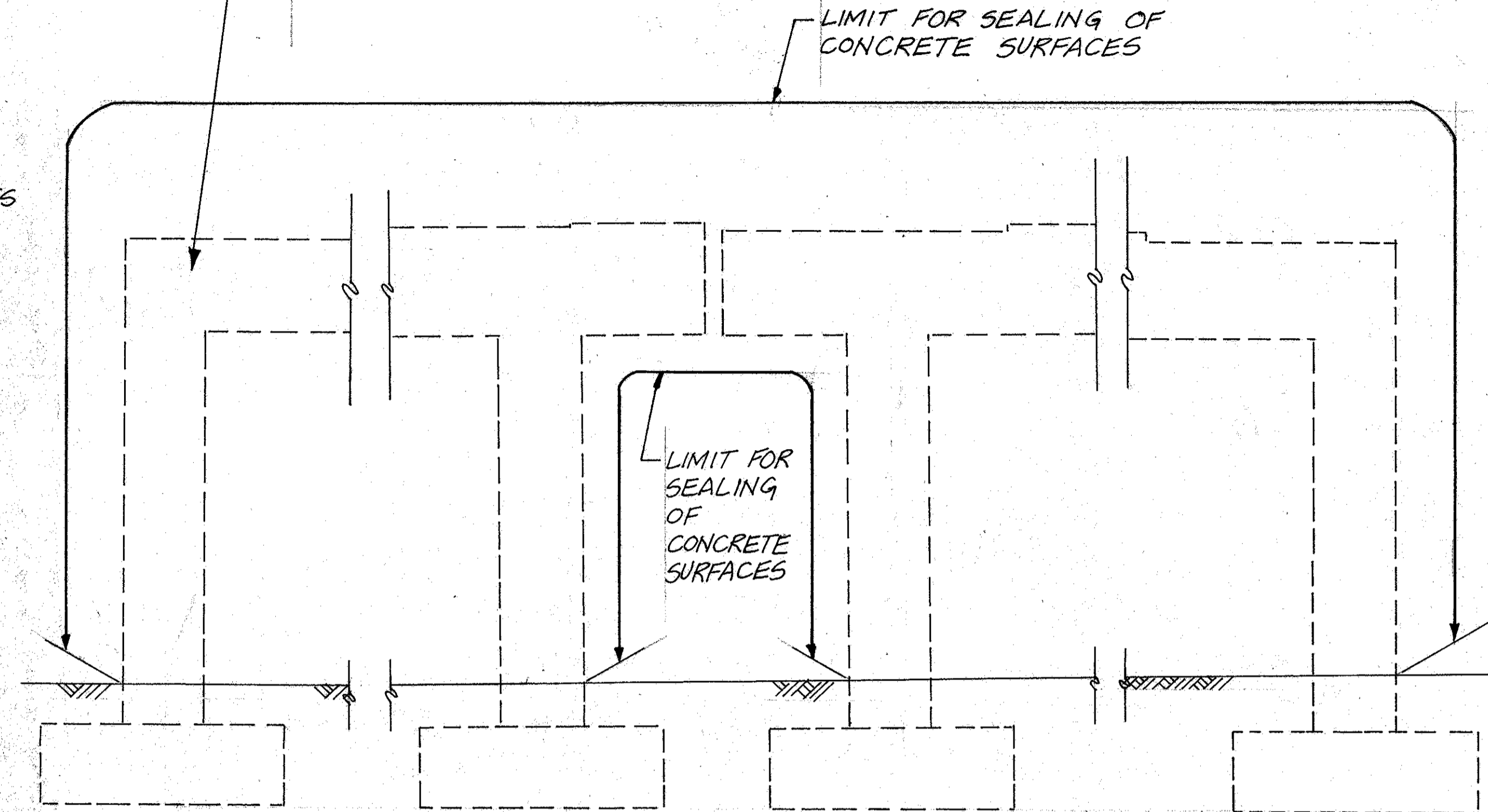
LIMIT FOR SEALING OF CONCRETE SURFACES



CURB AND SIDEWALK REPAIR
(SEE SIDEWALK PATCH DETAIL THIS SHEET)



MEDIAN REPLACEMENT



TYPICAL PIER REPAIR CROSS SECTION

TYPICAL BRIDGE REPAIR CROSS SECTION

ITEMS11 - CLASS 'S' CONCRETE, SUPERSTRUCTURE (*)	
LOCATION	REPLACEMENT QUANTITY (CY)
MEDIAN	55
TOTAL	55

(*) AS PER PLAN

ITEM 519 - CONCRETE PATCHING, AS PER PLAN. (SEE CURB AND SIDEWALK REPAIR CROSS SECTION & SIDEWALK PATCH DETAIL THIS SHEET.)

LOCATION	PATCH REPAIR (S.F.) ESTIMATED ****
EAST SIDEWALK	110
WEST SIDEWALK	108
WEST CURB FACE	22
TOTAL	240

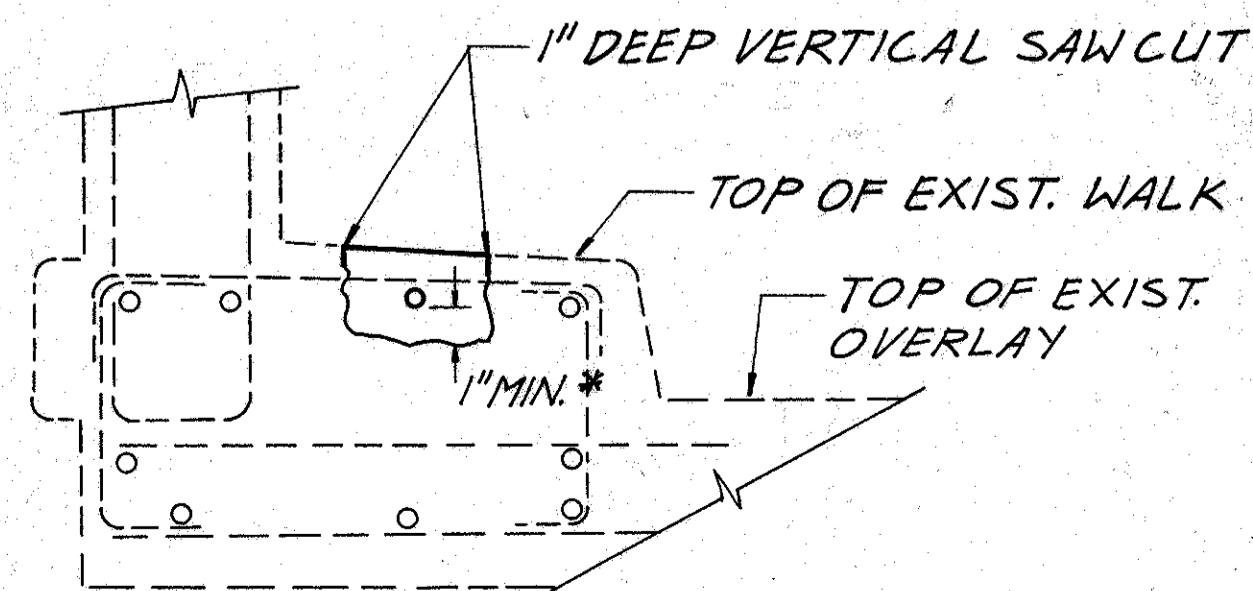
***** ESTIMATED QUANTITY HAS BEEN INCREASED OVER MEASURED QUANTITY TO ALLOW FOR ADDITIONAL DETERIORATION. EXACT DIMENSIONS SHALL BE DETERMINED BY THE FIELD ENGINEER FOR FINAL PAY QUANTITY.

ITEM SPECIAL - PATCHING CONCRETE STRUCTURE WITH TROWELABLE MORTAR	
LOCATION	PATCH REPAIR (S.F.) ESTIMATED ****
SOUTH PIER	4
CENTER PIER	8
NORTH PIER	20
TOTAL	32

ITEM SPECIAL - SEALING OF CONCRETE SURFACE		
LOCATION	TYPE OF SEALANT	SEALING AREA (S.Y.)
SUPERSTRUCTURE ***	EPOXY	766
MEDIAN	EPOXY	311
EXTERIOR SIDEWALLS OF ABUTMENT	EPOXY	12
PIERS	NON-EPOXY	659
ABUTMENTS *****	EPOXY	170
TOTAL	NON-EPOXY	659
TOTAL	EPOXY	1259

*** NOT INCLUDING MEDIAN

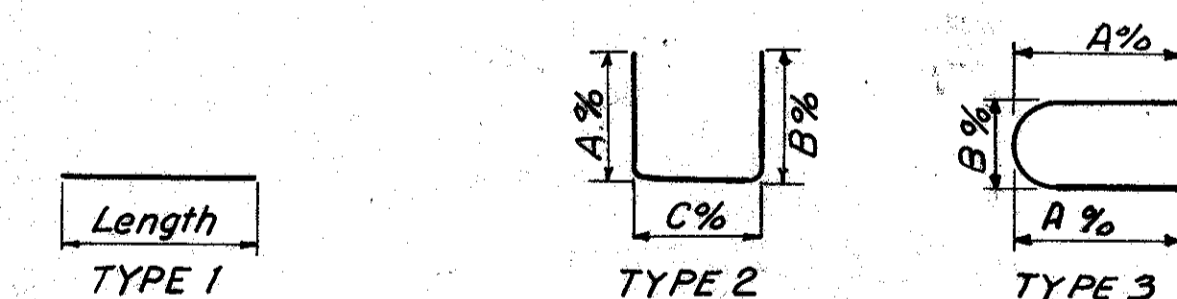
***** INCLUDING SEATS AND BACKWALLS



SIDEWALK PATCH DETAIL

REINFORCING STEEL LIST									
Mark	No.	Length	Inc	Weight	Type	Dim.			Bar Distribution
						A	B	C	
ES609	30	27'-7"		1243	1				
ES610	25	28'-3"		1061	1				
ES611	198	7'-4"		2180	2	0'-8"	6'-4"	0'-8"	
ES612	1	6'-4"		10	2	0'-8"	5'-4"	0'-8"	
ES613	1	13'-4"		20	3				
TOTAL				4514					

NOTE: 1. ES612 AND ES613 ARE AT SOUTH (CURVED) END OF MEDIAN
2. FAN 3 ES611 TO ACCOMMODATE SKEW AT NORTH END OF BRIDGE MEDIAN



REINFORCING DETAILS

O/O = OUT TO OUT
ALL REINFORCING BARS WHICH ARE TO BE EPOXY COATED INCLUDE A LETTER PREFIX "E"

Burgess & Niple, Limited
Engineers and Architects

5 / 8

REPAIR DETAILS
BRIDGE NO. LAK-91-0455
S.R. 91 OVER S.R.2

DESIGNED	DRAWN	TRACED	CHECKED	REVIEWED DATE	REVISED
SJS	PRD		RBB	7-20-90	