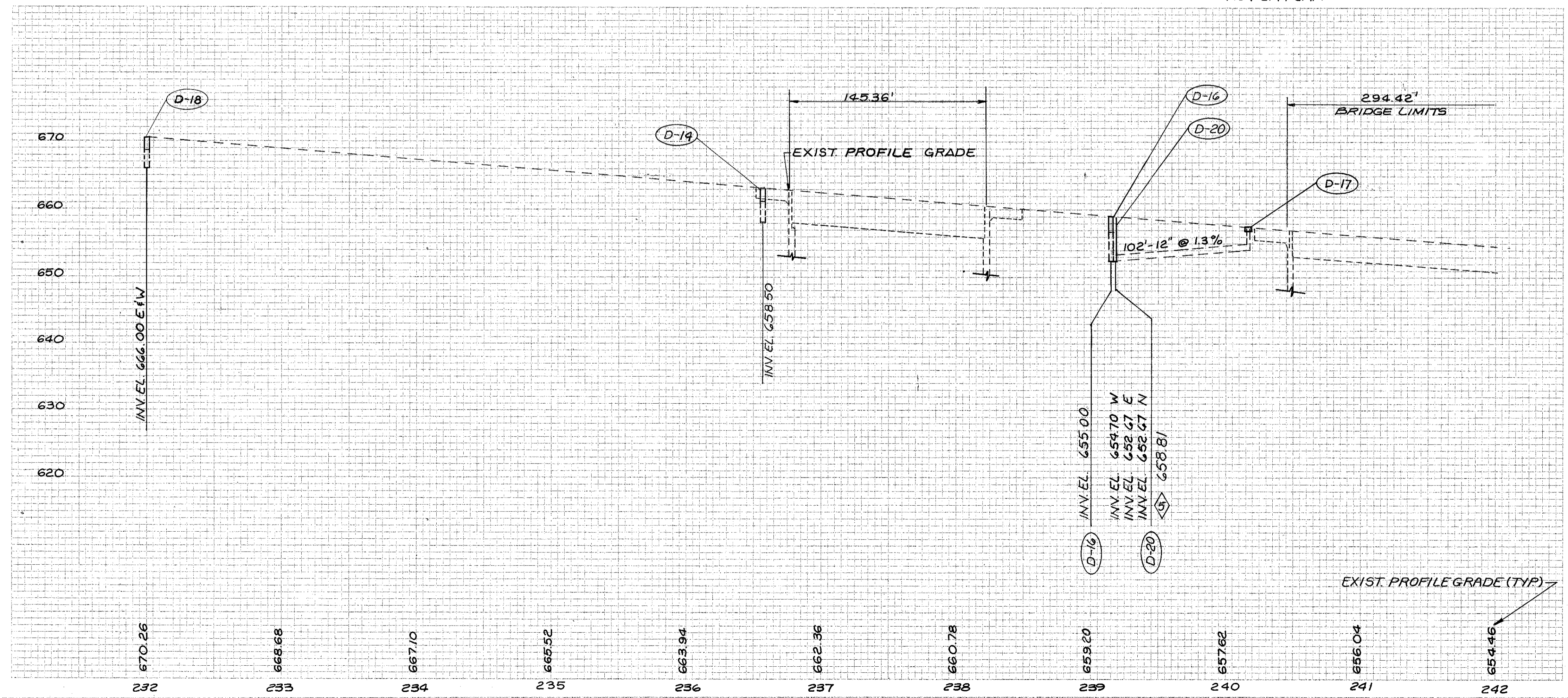


CURVE N°2
 Δ = 1°-15'-00"
 Δ = 16°-30'-00"
 R = 4583.66'
 T = 664.60'
 L = 1320.00'
 C = 1315.44'
 E = 47.93'
 P.I. STA. 231+43.30

- ⑤ INLET WINDOW FLOW LINE ELEVATION, TYP
- ④ PROP. CONCRETE MEDIAN, SEE DETAIL SHT. 17
- ③ CONNECT TO EXIST. UNDERDRAIN
- ② SEE SHT. 40 FOR WORK ON BRIDGE
- ① SEE NOTE SHT 8, ITEM G23 CONSTRUCTION LAYOUT STAKES, AS PER PLAN

REF	LOCATION	LIN. FT.	SQ. YD.	LIN. FT.	EACH	EACH
R-18	STA. 238+99 TO 239+24, E		46			
R-219	STA. 232+00 TO 236+42, LT.			428		1
R-220	STA. 232+00 TO 236+92, RT.			478	1	
R-221	STA. 232+00 TO 236+90, LT.	440				
R-222	STA. 232+00 TO 236+90, RT.	490				
TOTALS		930	46	906	1	1



REF	LOCATION	LIN. FT.	LIN. FT.	EACH	EACH	EACH	EACH	LIN. FT.
D-14	STA. 236+54, RT.							1
D-15	STA. 232+00 TO STA. 236+54, RT.	10						444
D-16	STA. 239+13, LT.				1			
D-17	STA. 240+15, E					1		
D-18	STA. 232+00, RT.						1	
D-19	STA. 239+00 TO 239+13, LT & RT	20						6
D-20	STA. 239+13, RT.		15*	1				
TOTALS		30	15	1	1	1	2	450

* 5 FEET OF CONDUIT IN NORTH, EAST AND WEST DIRECTIONS FROM INLET
S.R. 91 PLAN & PROFILE STA. 232+00 TO STA. 242+00