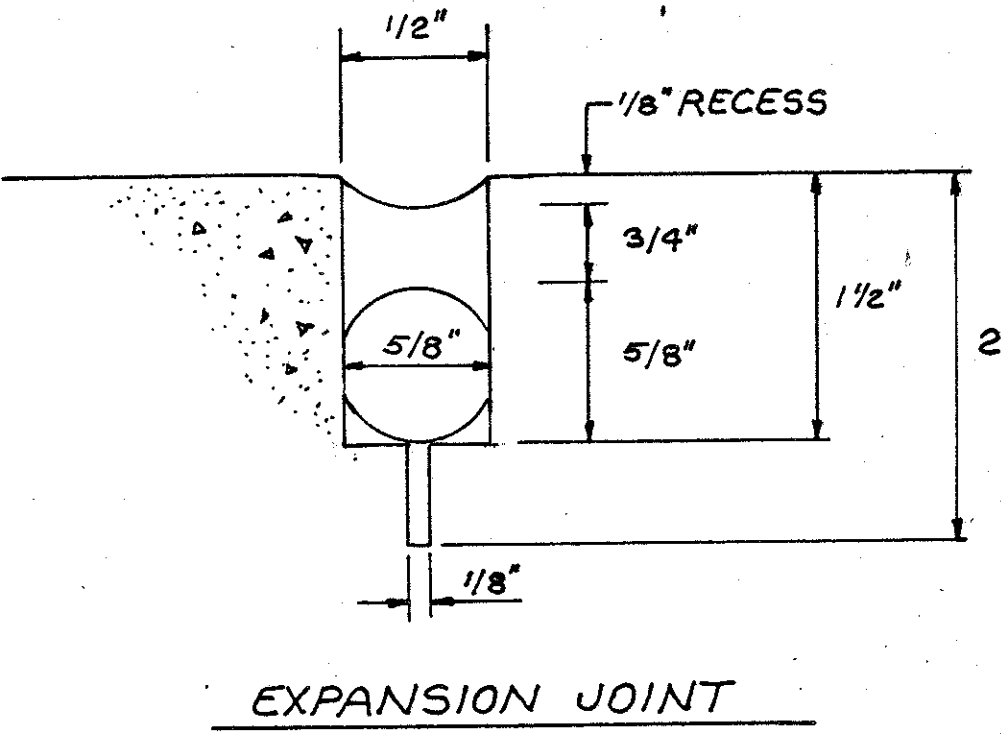
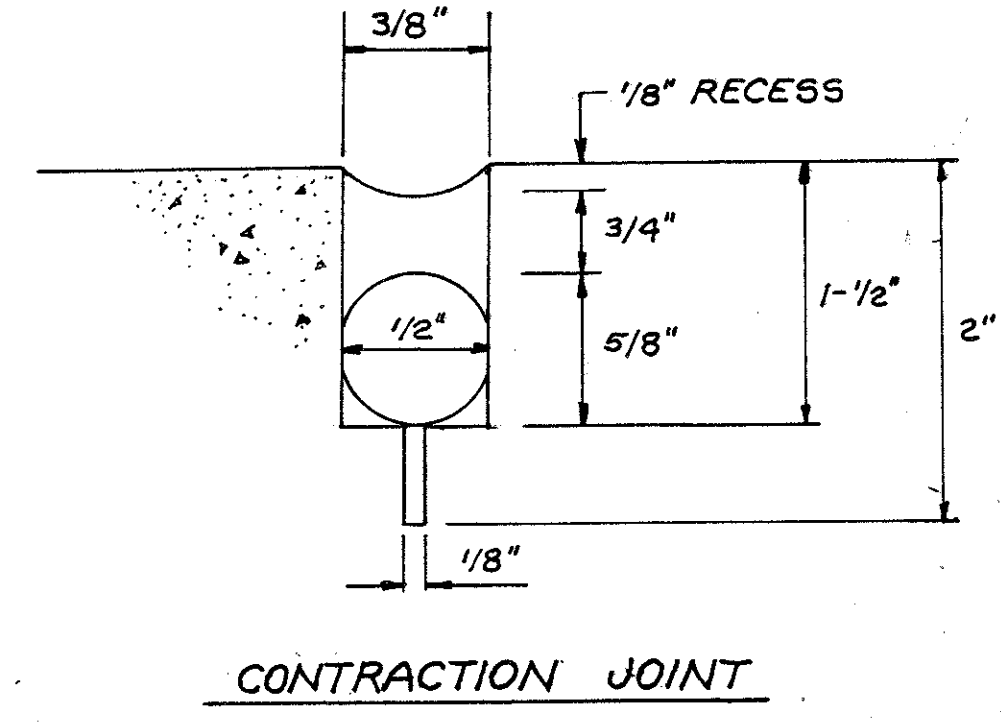
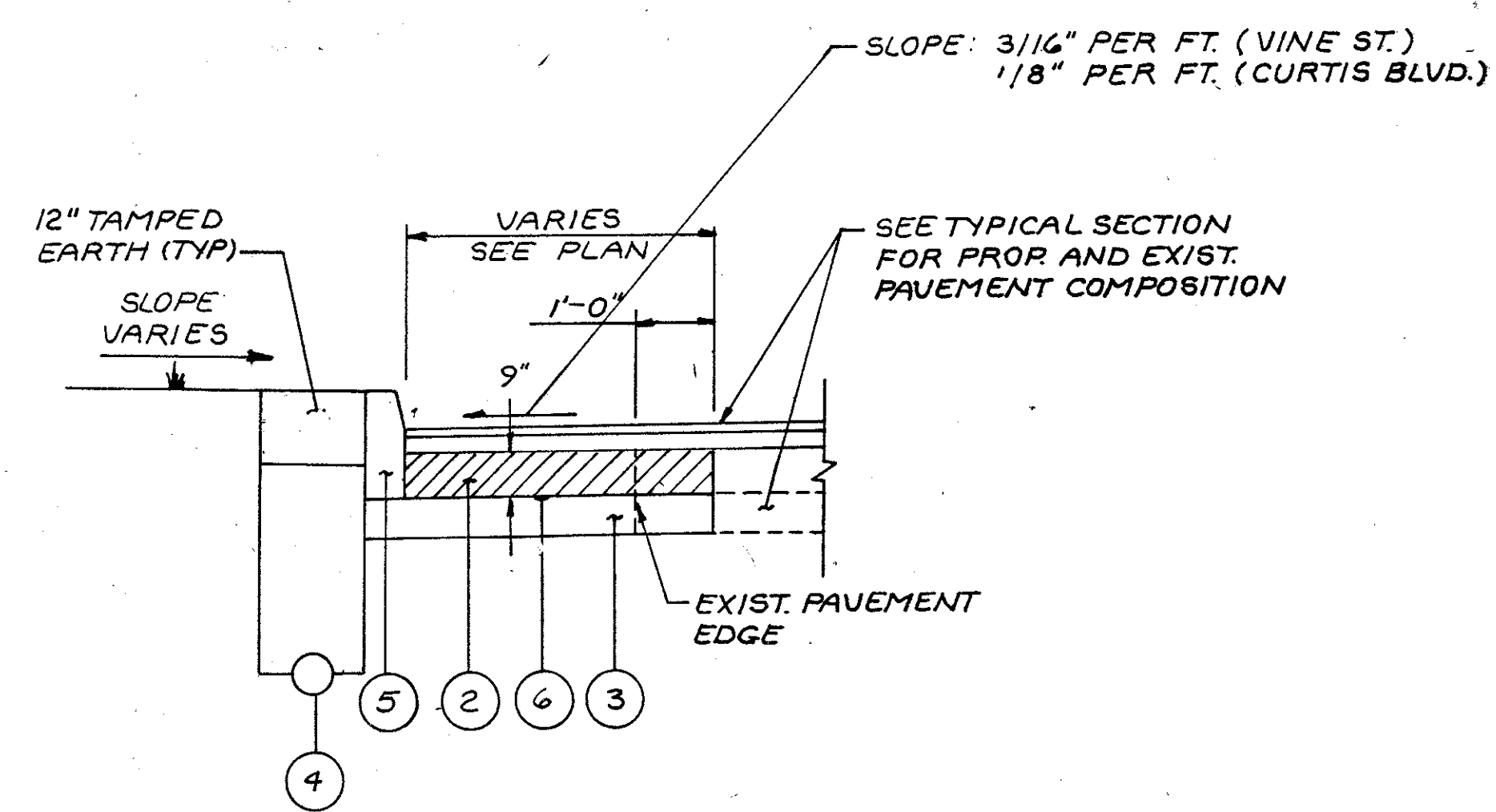


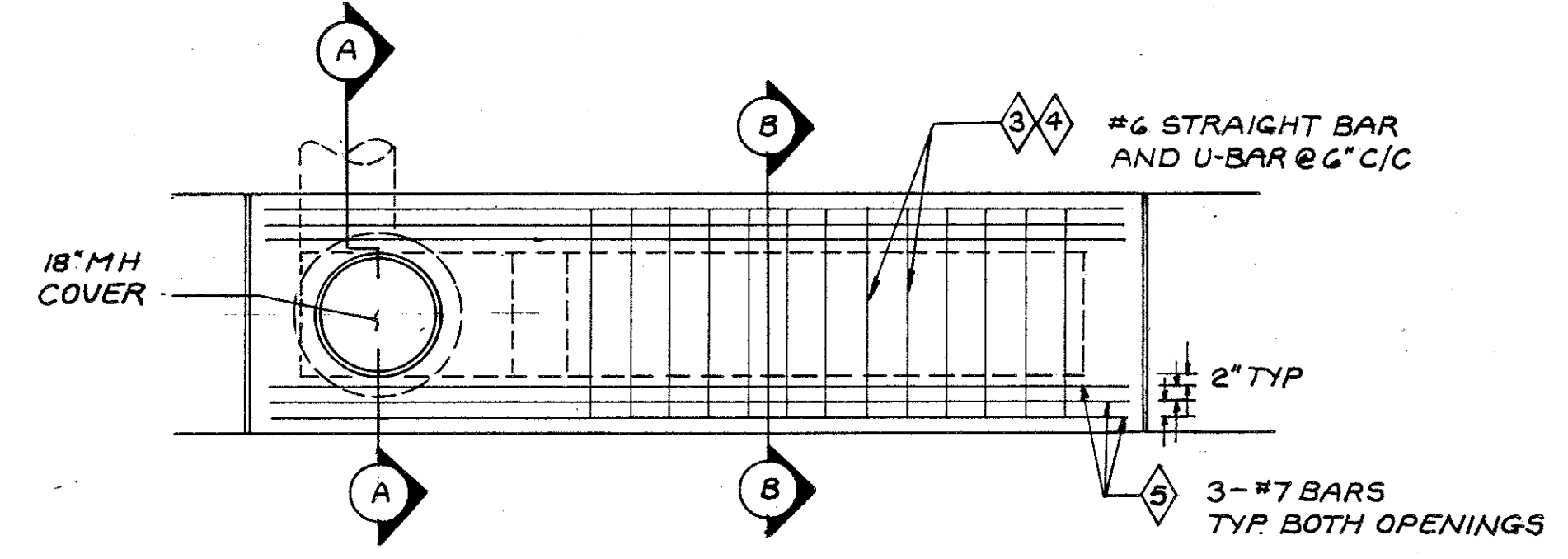
TYPICAL DROP MEDIAN DETAIL
SCALE NONE



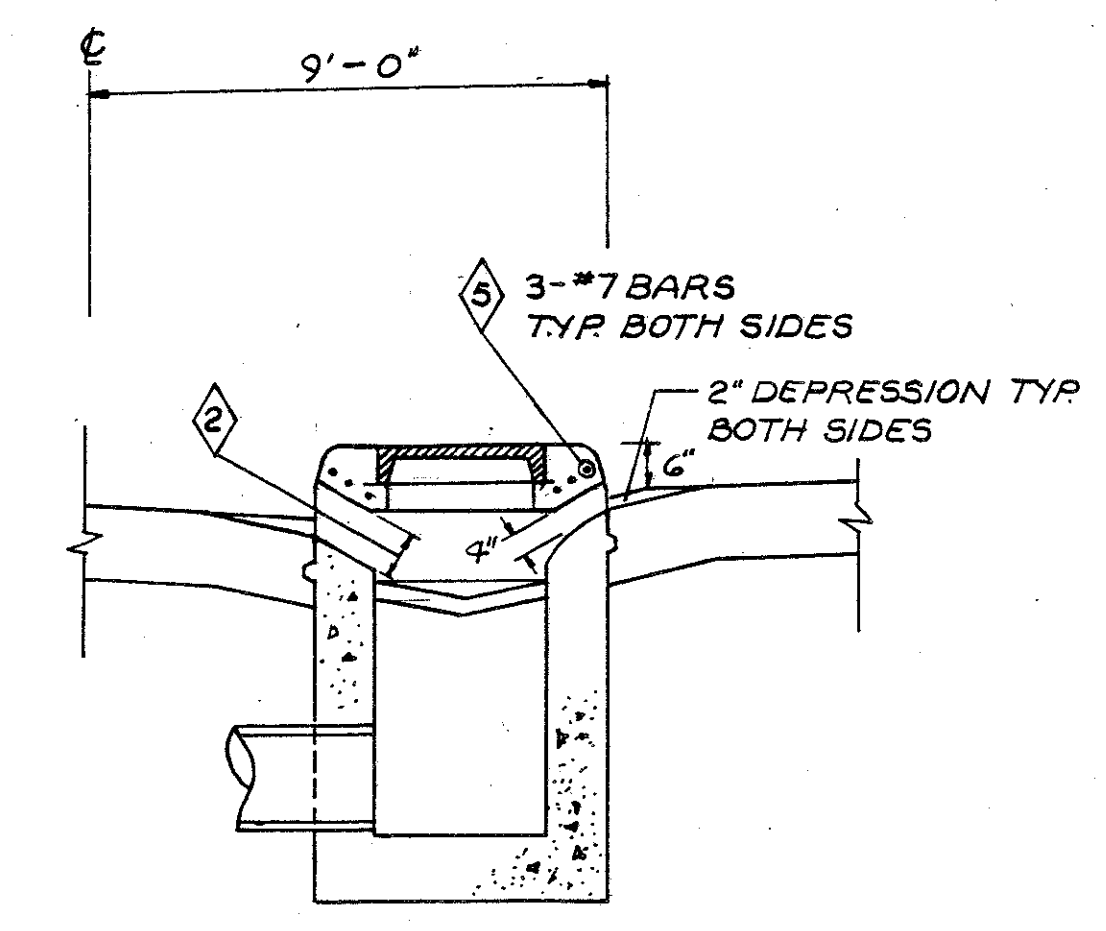
SAWING AND SEALING ASPHALT CONCRETE PAVEMENT JOINT DETAIL
SCALE NONE



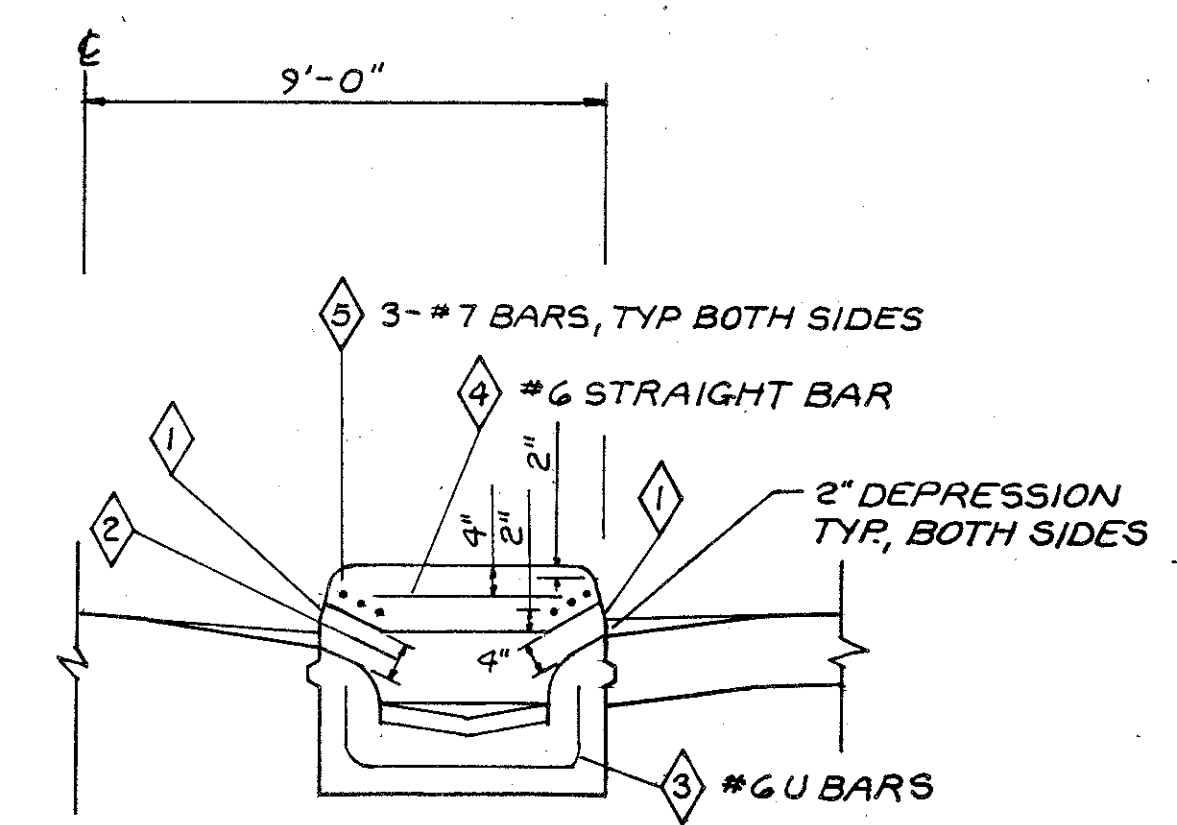
DETAIL 1
SCALE NONE



PLAN
SCALE NONE



SECTION A-A



SECTION B-B

MEDIAN INLET MODIFICATION
DETAIL A
SCALE NONE

MODIFICATION	NOTES
--------------	-------

INLET I-2-8, AS PER PLAN AT STA. 250+10 AND INLET I-2-6, AS PER PLAN AT STA. 286+65 SHALL BE MODIFIED AS PER THIS DETAIL TO HAVE AN OPENING ON EACH SIDE OF MEDIAN EDGE. THESE INLETS SHALL BE ESSENTIALLY THE SAME AS INLET I-2 SHOWN IN THE STANDARD DRAWINGS EXCEPT FOR THE FOLLOWING:

- ① SIDE OPENINGS ON BOTH SIDES OF MEDIAN EDGE.
- ② INCREASE SIDE OPENING SIZE AS NECESSARY TO ACCOMMODATE INCREASE IN MEDIAN CURB HEIGHT WHILE MAINTAINING AN 8" INLET TOP SLAB THICKNESS AND 2" SIDE OPENING DEPRESSION.

ALL REBAR SHALL BE THE SAME AS SHOWN IN THE STANDARD DRAWING EXCEPT FOR THE FOLLOWING:

REPLACE S601 OF STANDARD AT ALL LOCATIONS WITH #6 U-BAR ③ AND #6 STRAIGHT BAR ④ (BOTH AT 6" C/C) AS SHOWN ON THIS DETAIL.

REMOVE S503 OF STANDARD AT ALL LOCATIONS. INSTALL 3-#7'S ⑤ OVER EACH SIDE OPENING AS SHOWN ON THIS DETAIL.