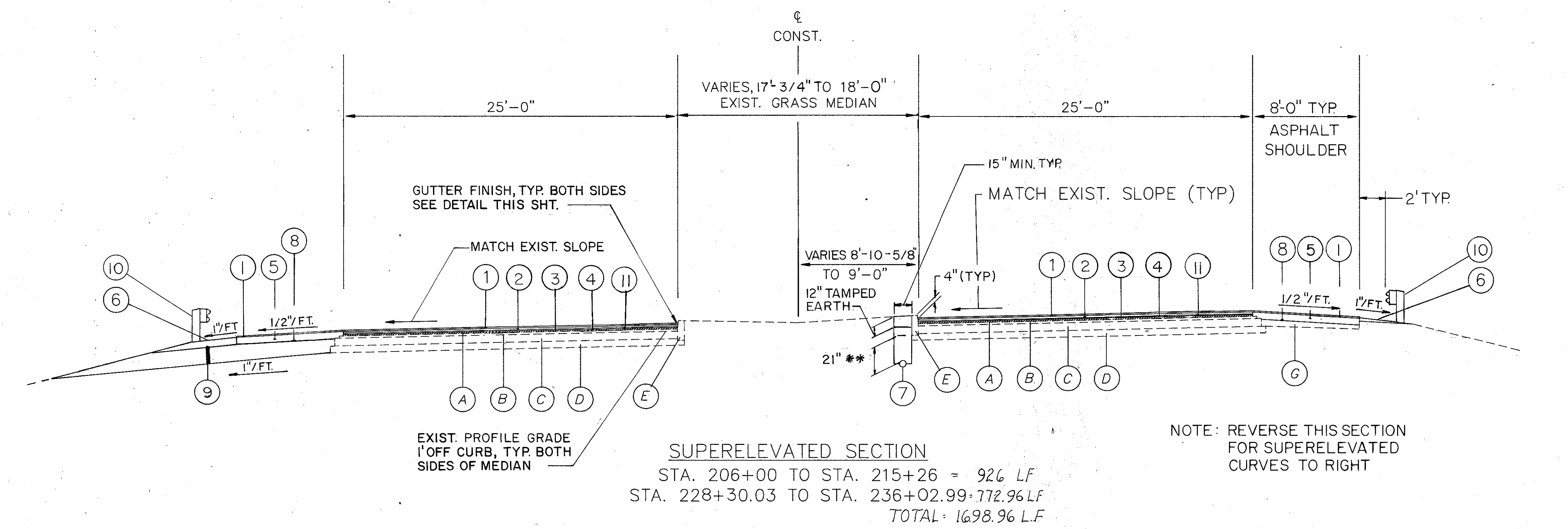
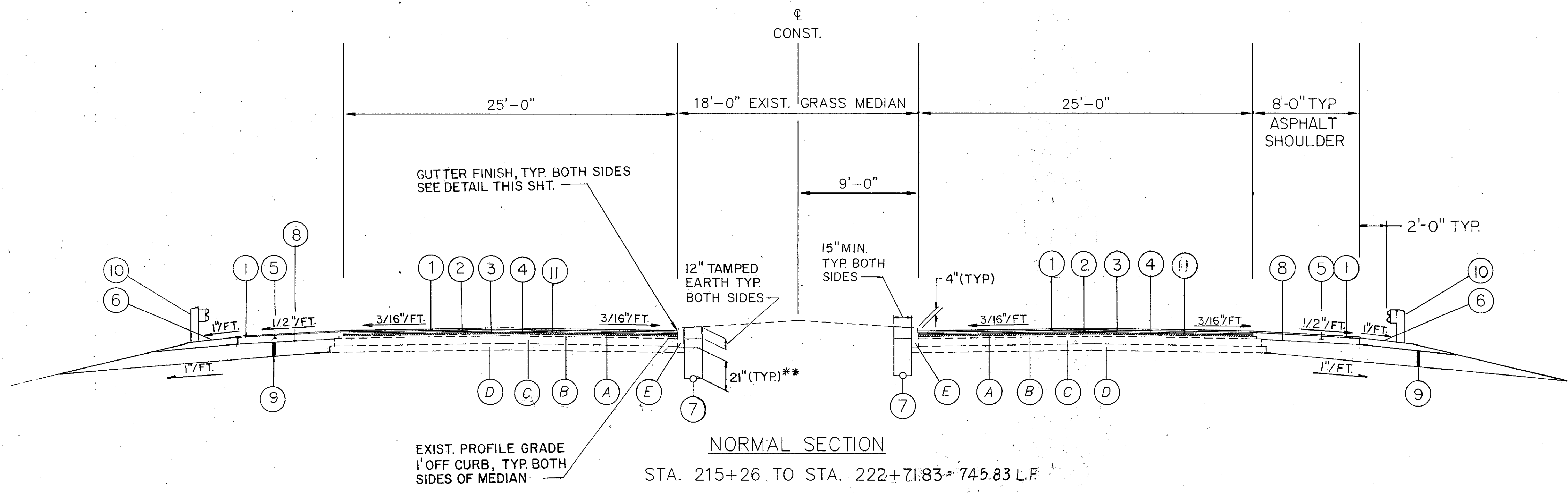
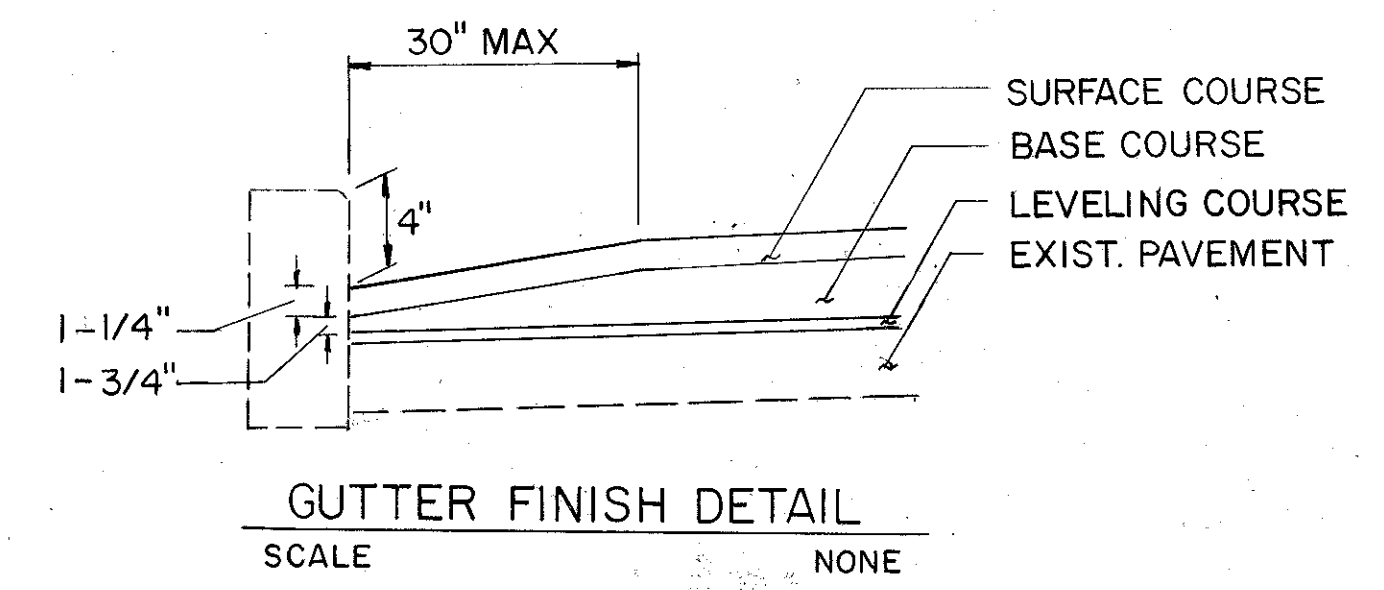
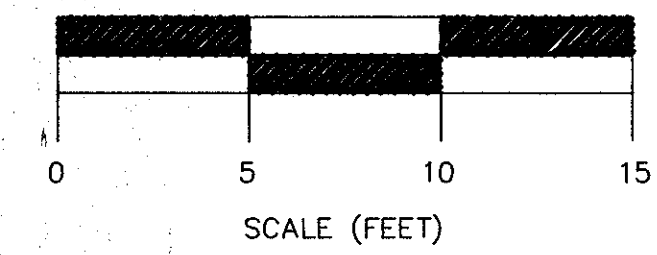


**TYPICAL SECTIONS
 TYPE 446**



LEGEND

- ① ITEM 446 - 1-1/4" ASPHALT CONC. SURFACE COURSE, TYPE I, AC-20
- ② ITEM 301 - 2-1/2" BITUMINOUS AGGREGATE BASE, AC-20
- ③ ITEM 407 - TACK COAT
- ④ ITEM 254 - 1-1/2" (NOMINAL) PAVEMENT PLANING, BITUMINOUS
- ⑤ ITEM 301 - VARIES (6" TO 9") BITUMINOUS AGGREGATE BASE, AC-20 *
- ⑥ ITEM 617 - COMPACTED AGGREGATE, TYPE A
- ⑦ ITEM 605 - SHALLOW PIPE UNDERDRAIN, AS PER PLAN
- ⑧ ITEM 408 - BITUMINOUS PRIME COAT
- ⑨ ITEM 605 - AGGREGATE DRAIN
- ⑩ ITEM 606 - GUARDRAIL, TYPE 5
- ⑪ ITEM 403 - 1/2" ASPHALT CONCRETE LEVELING COURSE
- Ⓐ EXISTING ASPHALT CONCRETE SURFACE COURSE
- Ⓑ EXISTING ASPHALT CONCRETE LEVELING COURSE
- Ⓒ EXISTING BITUMINOUS AGGREGATE BASE
- Ⓓ EXISTING SUBBASE
- Ⓔ EXISTING CONCRETE CURB
- Ⓕ EXISTING AGGREGATE BASE

** SEE PLAN SHEETS FOR FLOW LINE ELEVATIONS

* ITEM 301 - BITUMINOUS AGGREGATE BASE

STATION	THICKNESS
206+00 TO 210+15	6"
210+15 TO 223+21.83	9"
227+80.03 TO 236+77.99	9"

NOTE: REVERSE THIS SECTION FOR SUPERELEVATED CURVES TO RIGHT