

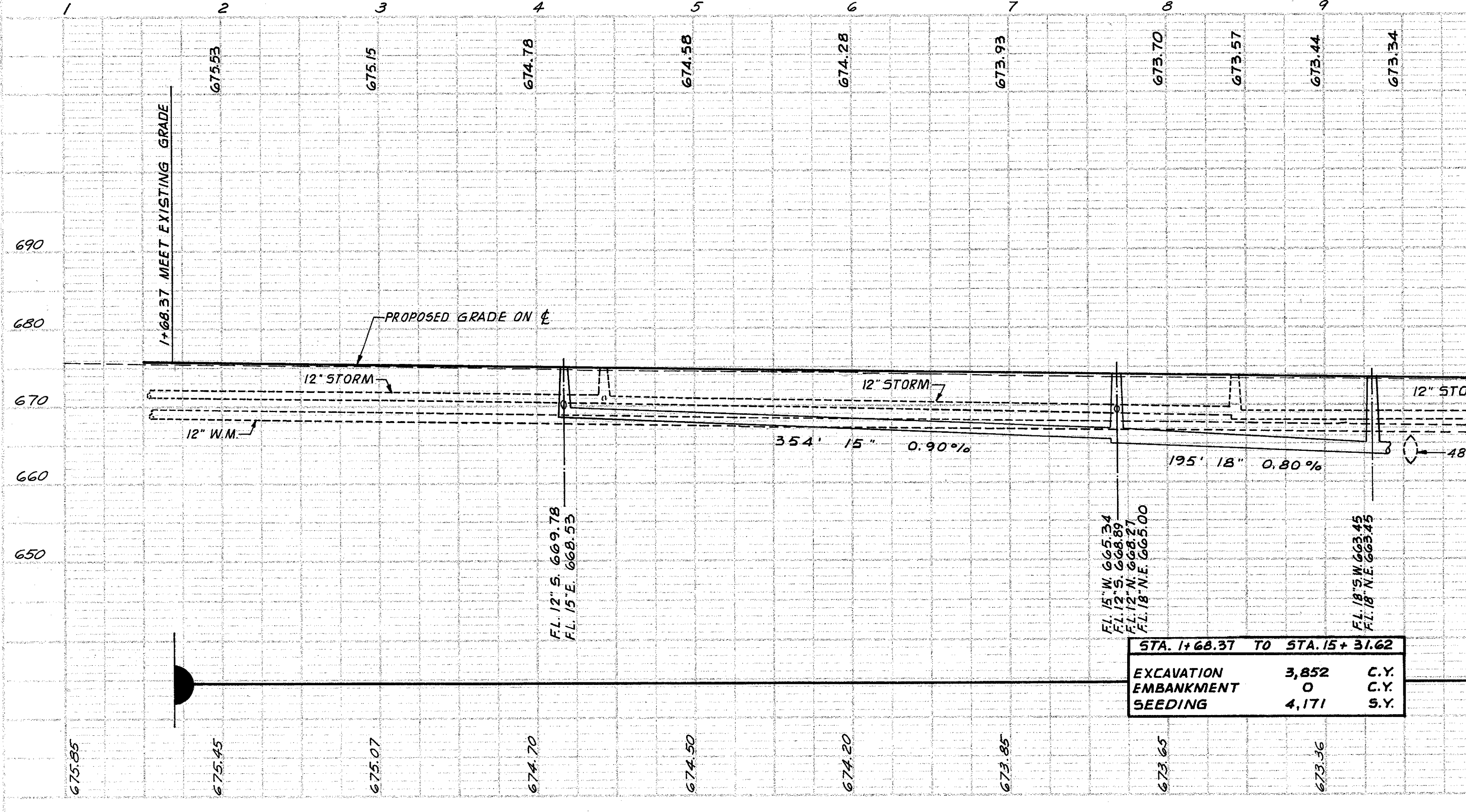
TYPE 2 DRIVEWAYS					
REF. NO.	STATION	SIDE	B-19 CU. YD.	T-35 TYPE 'C' CU. YD.	E-1 SQ. YD.
1-D	2+17	L	3.7	1.5	5
2-D	2+90	R	12.5	3.6	16
3-D	4+52	R	9.3	2.7	12
4-D	5+70	R	3.6	1.6	5
5-D	6+29	R	10.5	3.0	14
6-D	7+16	R			50
7-D	8+14	R			50
8-D	10+60	L	3.6	1.4	5
TOTAL			43	14	79

I-124 WATER MAINS & SERVICE BRANCH					
REF. NO.	STATION	SIDE	HYDRANT VALVE BOX RESET TO GRADE	LINE VALVE BOX RESET TO GRADE	
1-W	5+22	L	1		
2-W	8+70.5	L		1	
3-W	8+73.5	L	1		
4-W	8+87.5	L		1	
5-W	12+43	L	1		
TOTAL			3	2	

6" UNDERDRAIN - SHALLOW			
REF. NO.	STATION	SIDE	I-1 LIM. FT.
1-F	1+68.37 TO 1+94.85 ON S.R. 91	R	683 30
2-F	1+68.37 TO 201+74 ON S.R. 91	L	715 30
3-F	200+10 ON S.R. 91 TO 12+94	R	400 10
4-F	202+14 ON S.R. 91 TO 12+94	L	354 20
TOTAL			2152 90

5-24 REMOVAL OF EXIST. STRUCTURES			
REF. NO.	STATION	SIDE	RETAINING WALL
1-R	11+58 TO 13+77	R	LUMP
TOTAL			LUMP

E-8 REMOVAL OF EXIST. PAVT.			
REF. NO.	L x W	SIDE	SQ. YD.
2-R	50' x 10'	R	56
3-R	48' x 10'	R	53
TOTAL			109



STA. 1+68.37 TO STA. 15+31.62		
EXCAVATION	3,852	C.Y.
EMBANKMENT	0	C.Y.
SEEDING	4,171	S.Y.

REF. STATION TO STATION	STORM SEWERS		I-1 LIN. FT.	I-8 EACH	I-16
	SIDE	CL. J-1			
1-5	4+16 TO 7+81	R	4	354	1
2-5	4+42	REL	10	69	1
3-5	7+81	REL	69		1
4-5	8+43	REL	78		1
5-5	12+94	REL	78		1
6-5	7+81 TO 9+29	REL	195		1
TOTALS			101	354	5