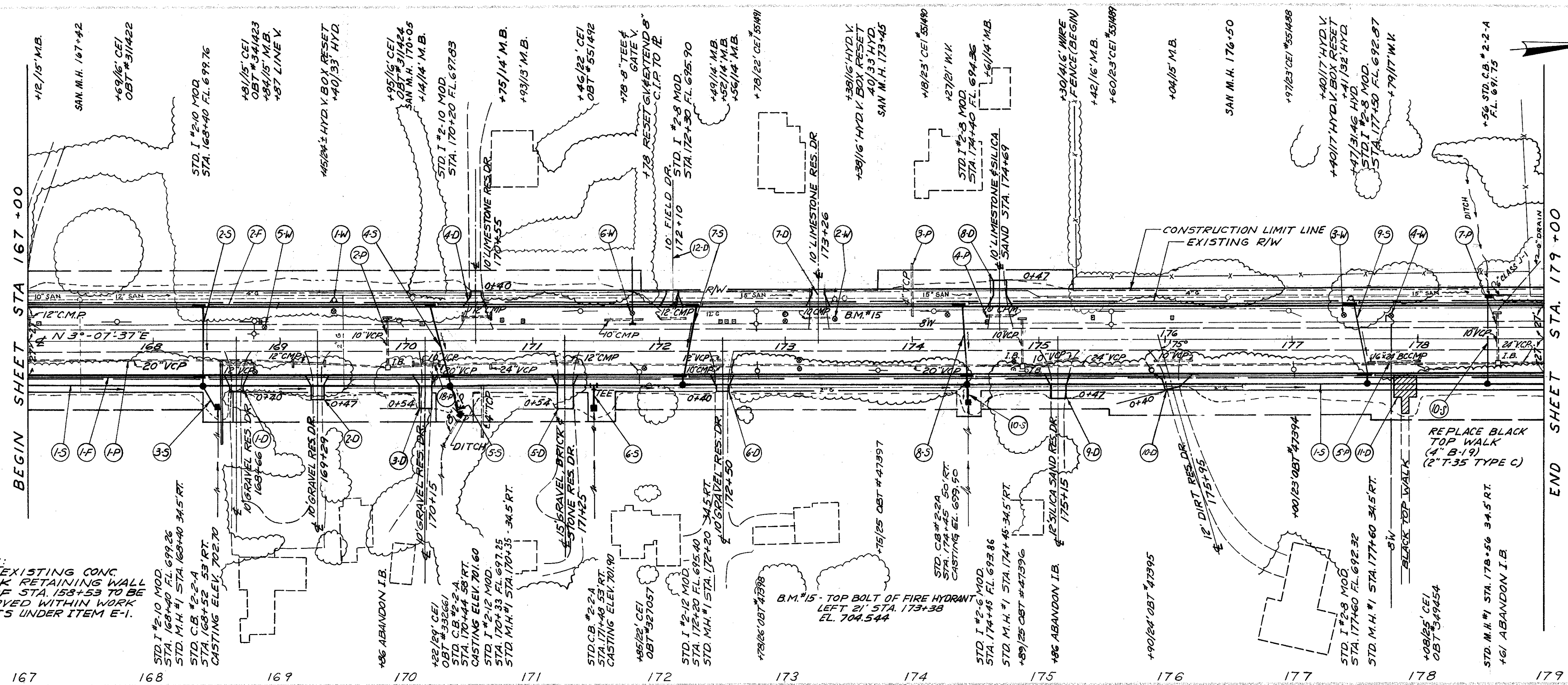


LAKE COUNTY  
LAK-91-272

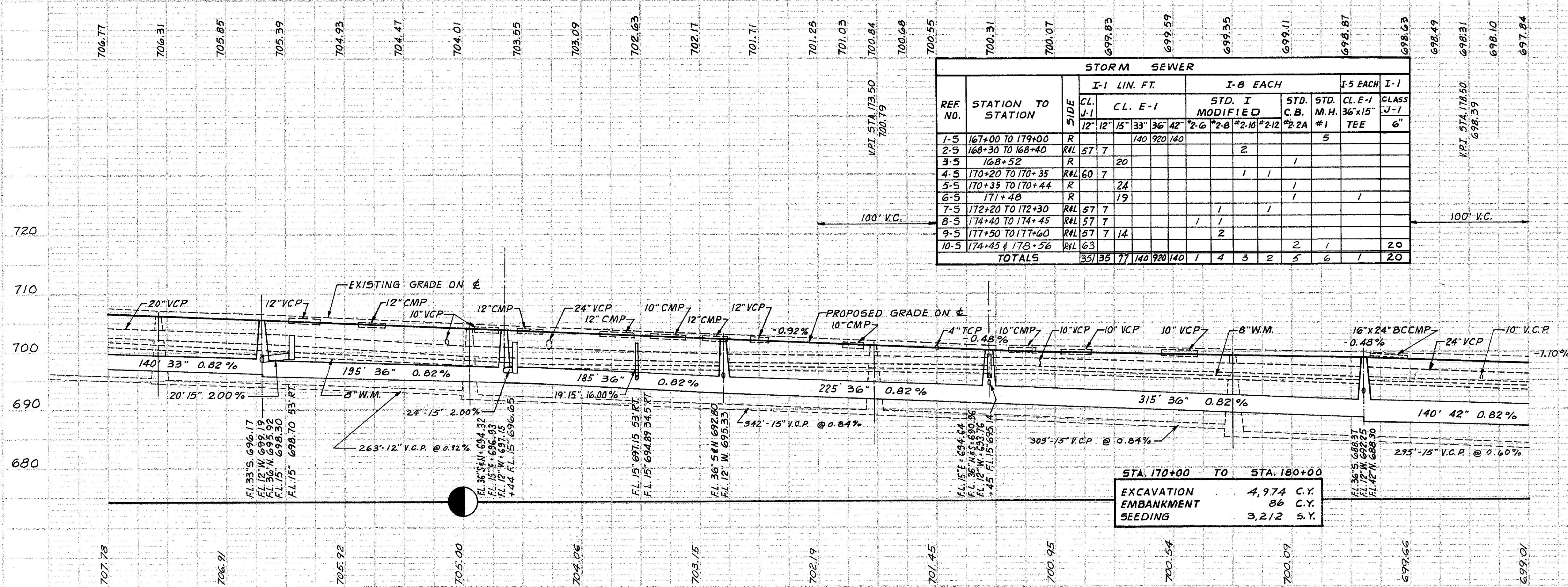


NOTE: EXISTING CONC. BLOCK RETAINING WALL RT. OF STA. 153+53 TO BE REMOVED WITHIN WORK LIMITS UNDER ITEM E-1.

REF. NO.	STATION	SIDE	TYPE 2 DRIVEWAYS #	WALKS	E-1 ROADWAY EXCAV. C.U. YD.
1-D	167+06	R	2.5	1.0	4
2-D	169+29	R	3.6	1.4	5
3-D	170+15	R	4.7	1.9	9
4-D	170+55	L	2.5	1.0	4
5-D	171+25	R	6.7	2.7	12
6-D	172+50	R	2.5	1.0	4
7-D	173+26	L	3.6	1.4	5
8-D	174+69	L	3.6	1.4	5
9-D	175+15	R	4.2	1.7	6
10-D	175+95	R	2.8	1.1	4
11-D	177+90	R	5	3	8
12-D	172+10	L	3.0	-	3
TOTALS					69

REF. NO.	STATION		SIDE	E-1 PIPE REMOVED		I-16 ABANDONED INLETS EACH	TOTALS
	FROM	TO		15" # UNDER L.F.	OVER 15" L.F.		
1-P	167+00	179+00	R	1200	1		2
2-P	169+86		L/R	38			
3-P	174+00		L	8			
4-P	174+60	179+80	L	20			
5-P	177+66	179+98	R	32			
6-P	178+61		L/R	42			
TOTALS							106

REF. NO.	STATION TO STATION	SIDE	STORM SEWER													
			I-1 LIN. FT.			I-8 EACH				I-5 EACH		I-1				
			CL. J-1	CL. E-1	STD. I MODIFIED	STD. C.B.	STD. M.H.	CL. E-1	CLASS J-1	CL. E-1	CLASS J-1					
1-5	167+00 TO 179+00	R	12	12	15	33	36	42	2	2	5					
2-5	168+30 TO 168+40	R/L	5	7					2							
3-5	168+52	R			20											
4-5	170+20 TO 170+35	R/L	60	7				1	1							
5-5	170+35 TO 170+44	R			24				1							
6-5	171+48	R			19				1							
7-5	172+20 TO 172+30	R/L	5	7				1	1							
8-5	174+40 TO 174+45	R/L	5	7				1	1							
9-5	177+50 TO 177+60	R/L	5	7	14			2								
10-5	174+45 & 178+56	R/L	63						2	1			20			
TOTALS			351	35	77	140	920	140	1	4	3	2	5	6	1	20



STA. 170+00 TO STA. 180+00  
EXCAVATION 4,974 C.Y.  
EMBANKMENT 86 C.Y.  
SEEDING 3,212 S.Y.

REF. NO.	STATION	SIDE	I-1 LIN. FT.		TOTAL
			CL. I-3	CL. F-4	
1-W	169+45	L			
2-W	173+38	R	1150	50	1200
3-W	177+40	L	1150	50	1200
4-W	177+60	L			
5-W	168+87	L			
6-W	171+78	L			
TOTALS					2300

PLAN & PROFILE STA. 167+00 TO 179+00  
Rev. 3-5-68