

LAKE COUNTY
LAK-91-272

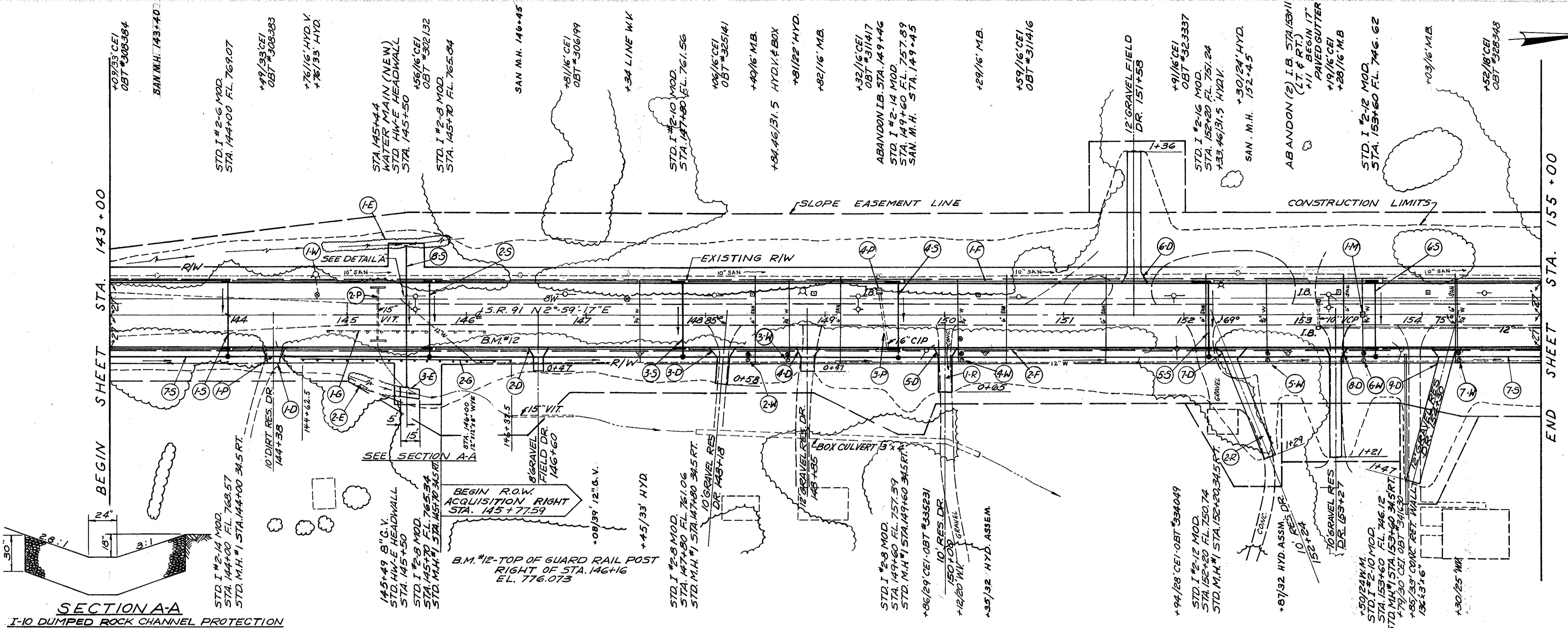
I-8 NONLIMENT ASSEMBLIES	REF. STATION	NO.	EACH	TOTAL	REF. STATION TO STATION	SIDE	E-12 PIPE REMOVED		I-16 ABANDONED
							15' UNDER L.F.	OVER 15' L.F.	
	1-P	144+18 TO 144+50	R	32	-	-			
	2-P	145+27	L&R	45	-	-			
	3-P	149+46 TO 149+53	L&R	-	50	-			
	4-P	149+46	L	-	-	1			
TOTALS							77	50	1

TYPE 2 DRIVEWAYS	REF. STATION	NO.	SIDE	TOTALS	SODDING & CHANNEL PROTECTION	L-10 SOD	DUMPED ROCK CHANNEL PROTECTION
1-D	144+58	R	2.3	1	4		
2-D	146+60	R	3.6	2.1	X-SECT.		
3-D	148+78	R	5.3	2.1	X-SECT.		
4-D	148+85	R	4.2	1.7	X-SECT.		
5-D	150+00	R	6.4	2.5	X-SECT.		
6-D	151+58	L	25.0	6.2	X-SECT.		
7-D	152+23	R	15.4	6.2	X-SECT.		
8-D	153+27	R	15.0	6.2	X-SECT.		
9-D	154+30	R	22.2	8.9	X-SECT.		
TOTALS					74	28	14

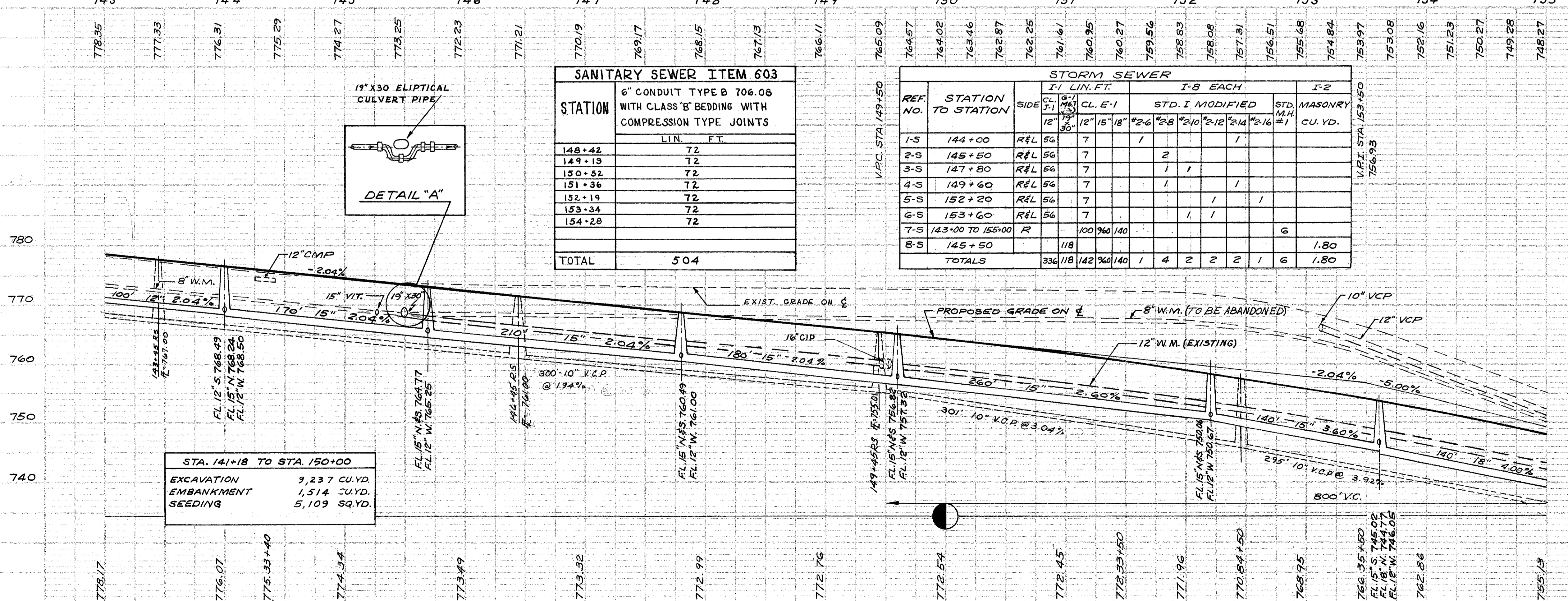
WATERWORK ITEM	ITEM 814	SERVICE BRANCH	MIN. 4" COVER	LIN. FT.	TOTAL	I-15 REM. I-15.11	I-15.11	I-15.11
				148+35	10			
				148+70	10			
				150+12	10			
				153+70	10			
				153+50	10			
				154+30	10			
TOTAL					42.0			

I-15 GUARD RAIL	REF. STATION	NO.	SIDE	TOTALS	I-8 REMOVAL OF EXIST. PAVEMENT	REF. LENGTH	S.Y.
1-S	144+76	L					
2-W	148+35	R					
3-W	148+70	R					
4-W	150+78	R					
5-W	152+70	R					
6-W	154+30	R					
TOTALS					120.0	175	175

I-15 GUARD RAIL	REF. STATION	NO.	SIDE	TOTALS	I-8 REMOVAL OF EXIST. PAVEMENT	REF. LENGTH	S.Y.
1-S	144+76	R					
2-S	144+82.5	R					
TOTALS					120.0	175	175

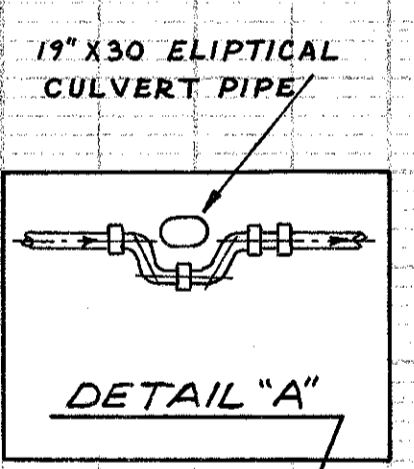


SECTION A-A
I-10 DUMPED ROCK CHANNEL PROTECTION



SANITARY SEWER ITEM 603	
STATION	LIN. FT.
148+42	72
149+13	72
150+52	72
151+36	72
152+19	72
153+34	72
154+28	72
TOTAL	504

REF. NO.	STATION TO STATION	SIDE	I-1 LIN. FT.			I-8 EACH			STD. MASONRY	CU. YD.						
			CL. E-1	STD. I MODIFIED	STD. M.H.											
1-S	144+00	R&L	56	7	1											
2-S	145+50	R&L	56	7	2											
3-S	147+80	R&L	56	7	1	1										
4-S	149+60	R&L	56	7	1	1										
5-S	152+20	R&L	56	7	1	1										
6-S	153+60	R&L	56	7	1	1										
7-S	143+00 TO 155+00	R		100	360	140		6								
8-S	145+50	L	118					1.80								
TOTALS			336	118	142	360	140	1	4	2	2	2	2	1	6	1.80



EXCAVATION	9,237 CU.YD.
EMBANKMENT	1,514 CU.YD.
SEEDING	5,109 SQ.YD.