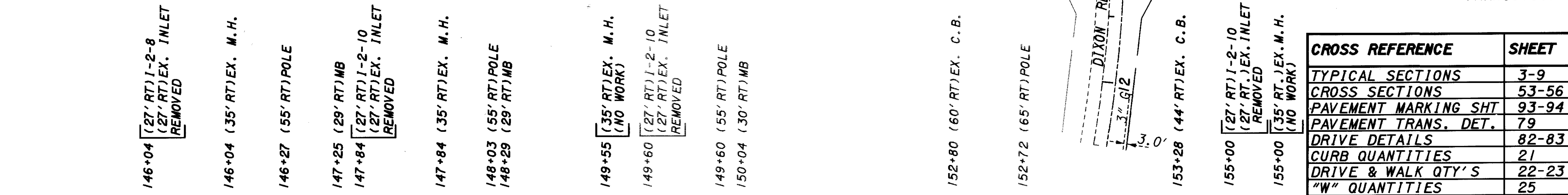
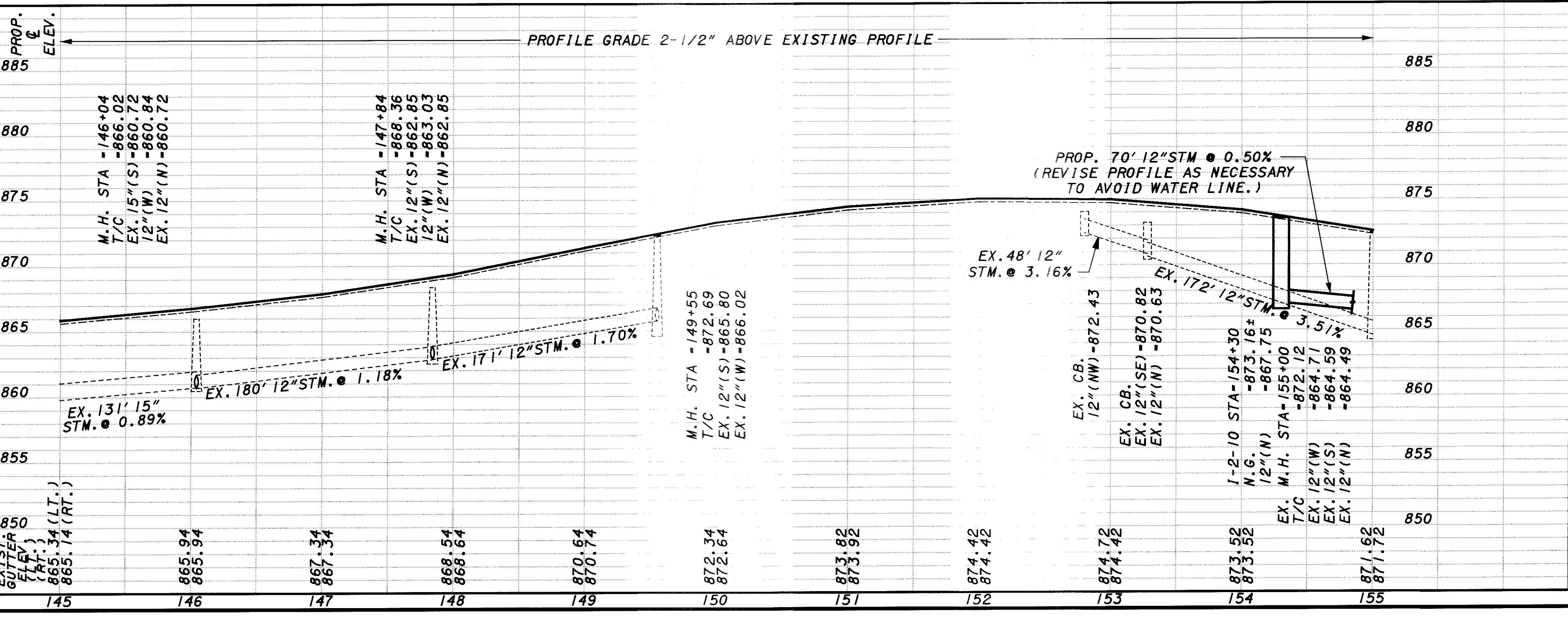


MATCH LINE STA. 145+00  
 SEE SHEET 30



CROSS REFERENCE	SHEET
TYPICAL SECTIONS	3-9
CROSS SECTIONS	53-56
PAVEMENT MARKING SHT	93-94
PAVEMENT TRANS. DET.	79
DRIVE DETAILS	82-83
CURB QUANTITIES	21
DRIVE & WALK QTY'S	22-23
"W" QUANTITIES	25

OVERLAY THICKNESS TRANSITION

MATCH LINE STA. 155+00  
 SEE SHEET 32

REF. NO.	STATION TO STATION	603			604	604	604	5
		CONDUIT, TYPE						
		B 12"	C 12"	F 6"				
1-D	146+04 LT.	2	2	10	INLET NO. 2-6	EACH	1	
2-D	146+04 RT.	2	2	10	INLET NO. 2-8	EACH	1	
3-D	148+03 LT.	2	2	15	INLET NO. 2-10	EACH	1	
4-D	147+84 RT.	2	2	10			1	
5-D	150+00 LT.	2	2	10			1	
6-D	149+60 RT.	2	2	10			1	
7-D	154+30 TO 155+00 LT.	2	2	10			1	
8-D	155+00 RT.	2	2	10			1	
TOTALS CARRIED TO DRAINAGE SUB-SUMMARY		16	16	85				