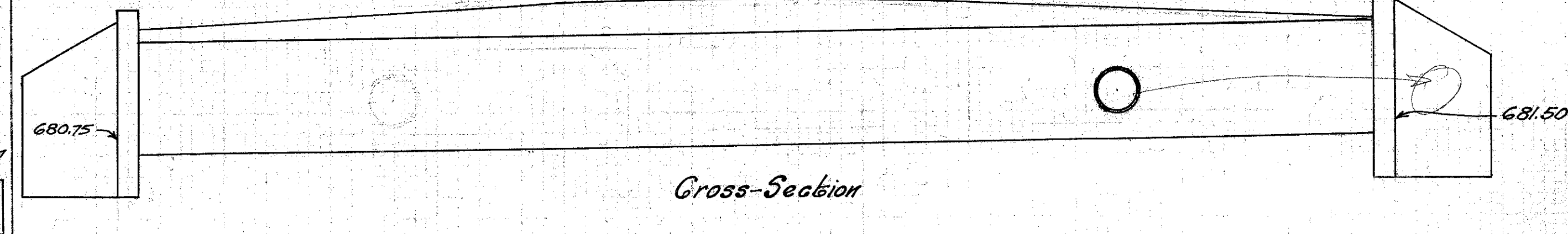


Cross-Section
Culvert No 24

Material	Vib. pipe	Grade Elevation	699.13	Estimated Quantities	
Type	Vib. pipe (enc.)	Grade	1.16%	Excav.	8 cu. yds.
Size	10"	Scale	1" = 5'	1-2-3/4 conc.	1 cu. yds.
Length	36'	Date	Mar. 1925	1-3-5 conc.	3.7 cu. yds.
Drainage area	36'			10" vib. pipe	36 lin. ft. 32 lbs. steel
Work Required:	Build std. 10" enc. vib. pipe culvert 36' long. 1 hr. on L & 1 inlet basin on R.				

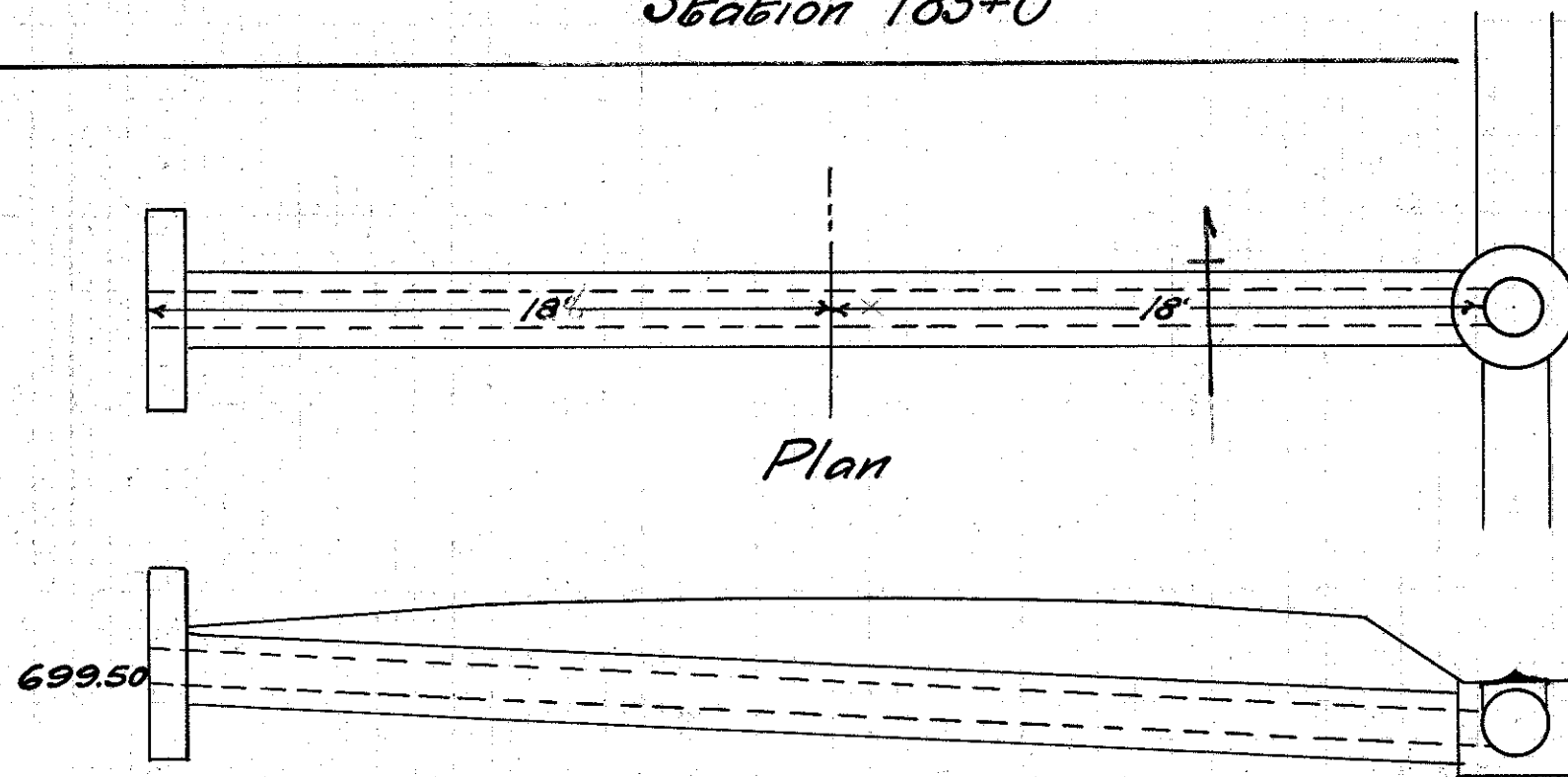
Station 183+0



Cross-Section
Culvert No 27

Material	Reinf. conc.	Grade Elevation	687.33	Estimated Quantities	
Type	Conc. box culv.	Grade	0.0%	Excav.	16 cu. yds.
Size	5'x4'	Scale	1" = 5'	1-2-3/4 conc.	43 cu. yds.
Length	60'	Date	Mar. 1925	Reinf. steel	2552 lbs.
Drainage area	60'			24" vib. pipe	2 lin. ft.
Work Required:	Remove old bridge floor & build std. 5'x4' concrete box culvert 60' long. Put 24" vib. pipe thru S. wall 17' 60 E. of E.				

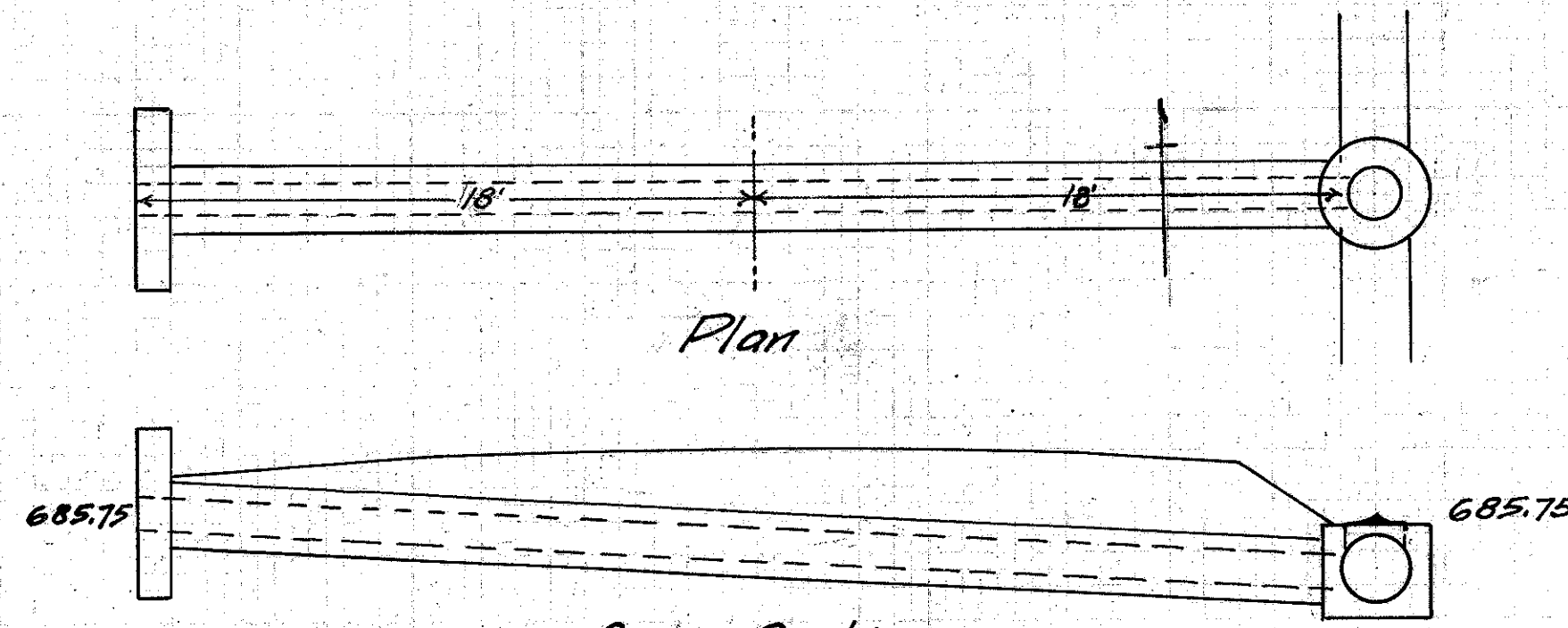
Station 192+36



Cross-Section
Culvert No 23

Material	Vib. pipe	Grade Elevation	701.79	Estimated Quantities	
Type	Vib. pipe (enc.)	Grade	0.40%	Excav.	7 cu. yds.
Size	10"	Scale	1" = 5'	1-2-3/4 conc.	1 cu. yd.
Length	36'	Date	Mar. 1925	1-3-5 conc.	3.7 cu. yds.
Drainage area	36'			10" vib. pipe	36 lin. ft. 32 lbs. steel
Work Required:	Build std. 10" enc. vib. pipe culvert 36' long. 1 hr. on L & 1 inlet basin on R.				

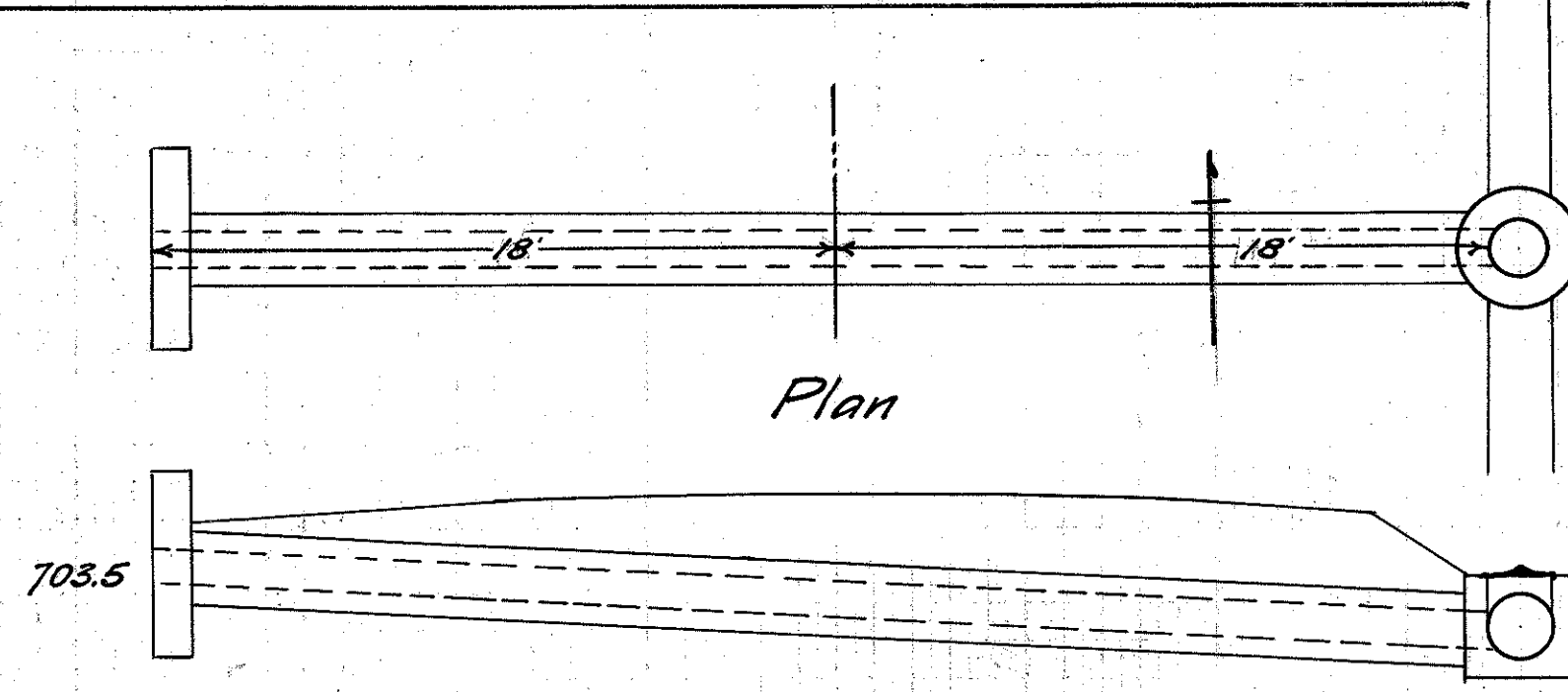
Station 178+25



Cross-Section
Culvert No 26

Material	Vib. pipe	Grade Elevation	688.13	Estimated Quantities	
Type	Vib. pipe (enc.)	Grade	1.2%	Excav.	5 cu. yds.
Size	10"	Scale	1" = 5'	1-2-3/4 conc.	1 cu. yd.
Length	36'	Date	Mar. 1925	1-3-5 conc.	3.7 cu. yds.
Drainage area	36'			10" vib. pipe	36 lin. ft. 32 lbs. steel
Work Required:	Build std. 10" enc. vib. pipe culvert 36' long. 1 hr. on L & 1 inlet basin on R.				

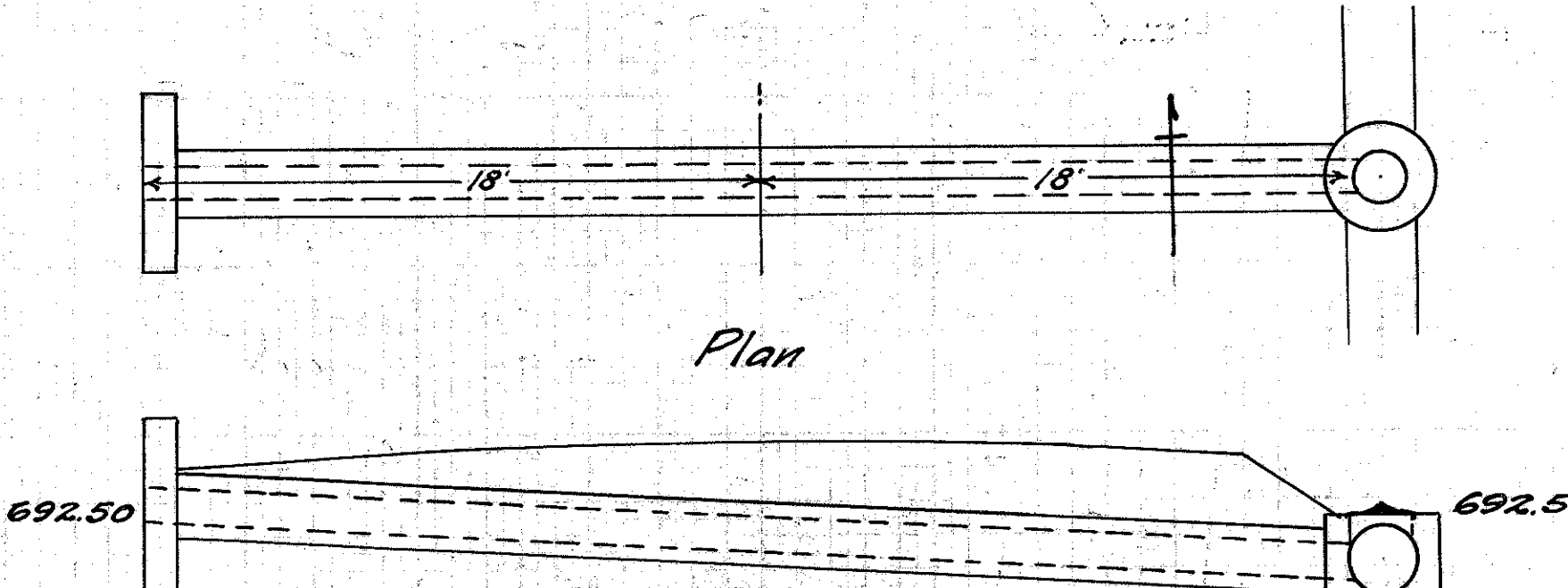
Station 190+75



Cross-Section
Culvert No 22

Material	Vib. pipe	Grade Elev.	705.89	Estimated Quantities	
Type	Vib. pipe (enc.)	Grade	0.96%	Excav.	6 cu. yds.
Size	10"	Scale	1" = 5'	1-2-3/4 conc.	1 cu. yd.
Length	36'	Date	Mar. 1925	1-3-5 conc.	3.7 cu. yds.
Drainage area	36'			10" vib. pipe	36 lin. ft. 32 lbs. steel
Work Required:	Build std. 10" enc. vib. pipe culvert 36' long. 1 hr. on L & 1 inlet basin on R.				

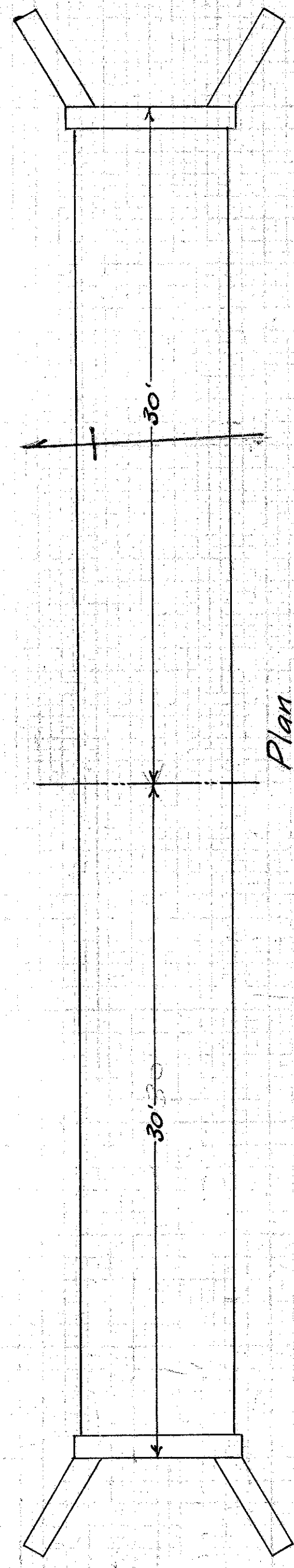
Station 173+25



Cross-Section
Culvert No 25

Material	Vib. pipe	Grade Elev.	694.78	Estimated Quantities	
Type	Vib. pipe (enc.)	Grade	1.16%	Excav.	7 cu. yds.
Size	10"	Scale	1" = 5'	1-2-3/4 conc.	1 cu. yd.
Length	36'	Date	Mar. 1925	1-3-5 conc.	3.7 cu. yds.
Drainage area	36'			10" vib. pipe	36 lin. ft. 32 lbs. steel
Work Required:	Build std. 10" enc. vib. pipe culvert 36' long. 1 hr. on L & 1 inlet basin on R.				

Station 186+75



192+36
 See Standard plan for dimensions and placing of reinforcement

Culverts Checked by SAC 3-16-26
 Fred E. Sweetford