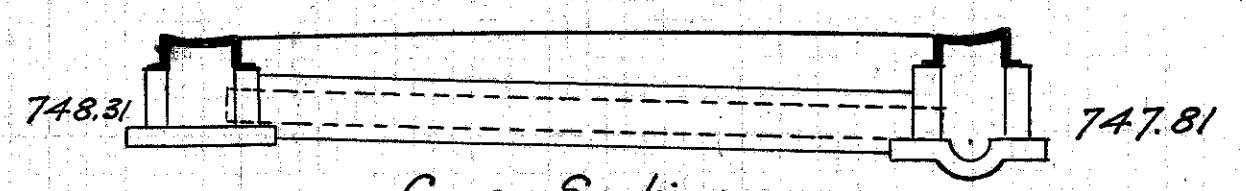
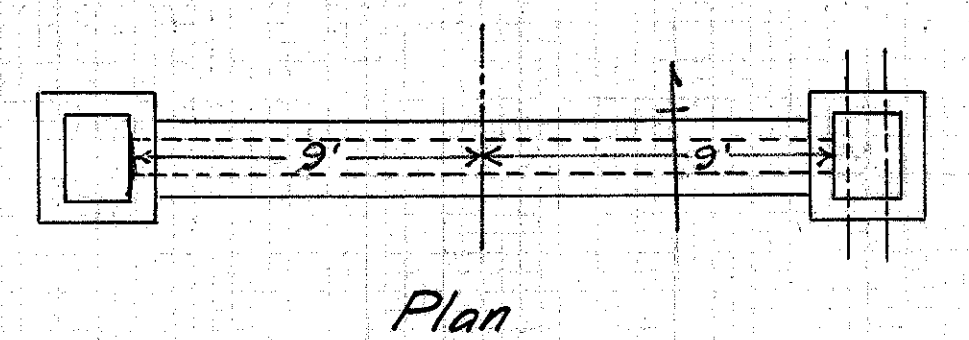


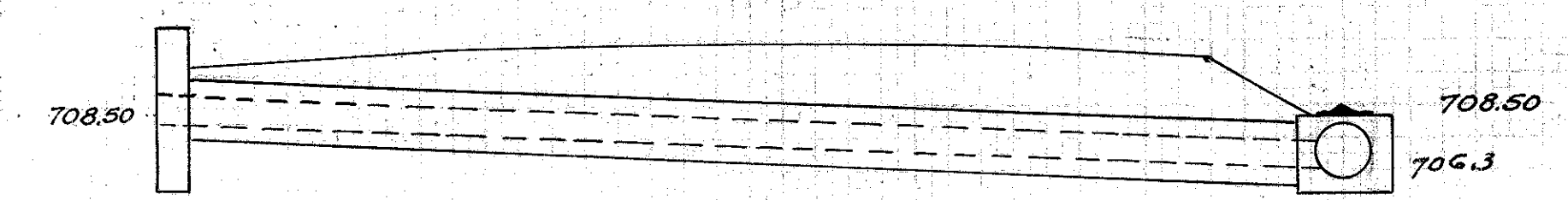
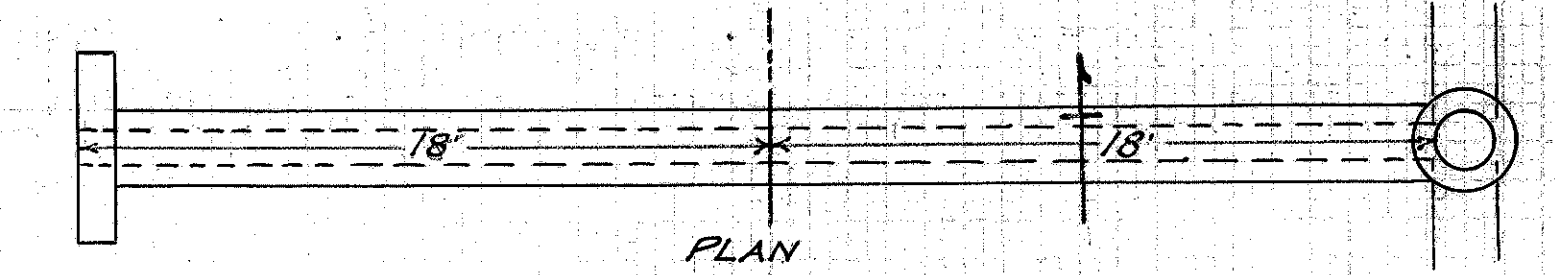
Culvert N° 15
 Material V16 pipe
 Type V16 pipe (enc)
 Size 10"
 Length 6'
 Drainage area
 Work Required: Extend present 10" vit. pipe + Build 1 headwall
 Station 137+62

Grade Elevation	782.70	Estimated Quantities
Grade	1.2%	Excav.
Scale	1"=5'	1-2-3/4 conc.
Date	Mar. 1925	10" vit. pipe
		32 lbs. steel
		6 lin. ft.



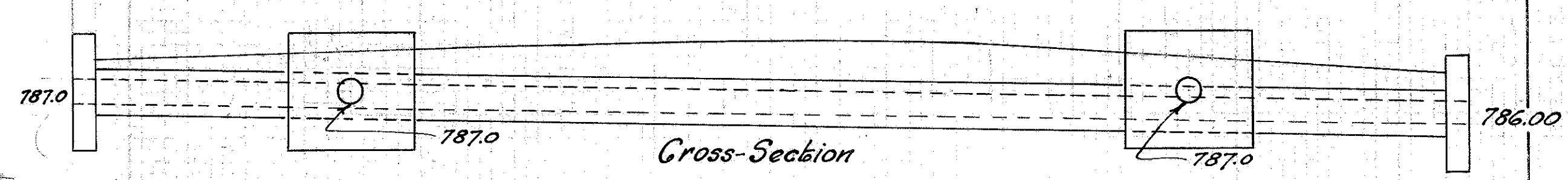
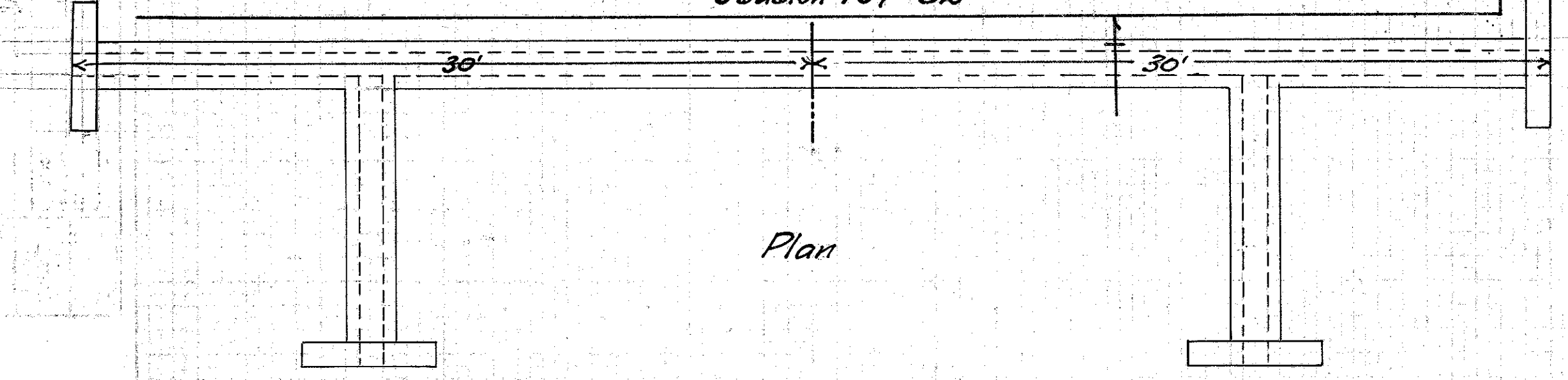
Culvert N° 18
 Material V16 Pipe
 Type V16 pipe (enc)
 Size 10"
 Length 18'
 Drainage area
 Work Required: Build std. 10" encased vit. pipe culvert 18' long + 2 Inlet basins
 Station 159+0

Grade Elevation	750.65	Estimated Quantities
Grade	8%	Excav.
Scale	1"=5'	1-3-5 conc.
Date	Mar. 1925	10" vit. pipe
		18 lin. ft.
		Inlet basins 2



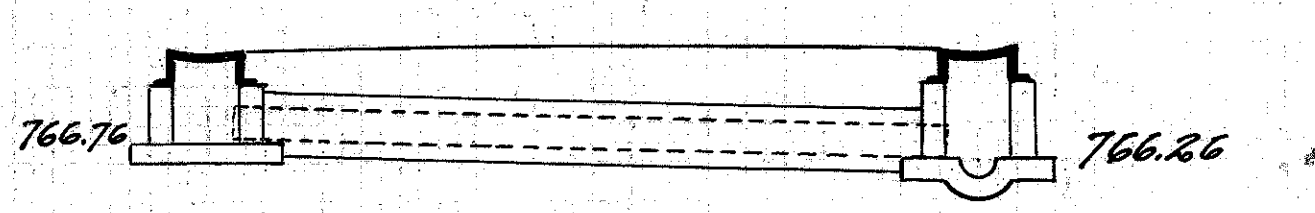
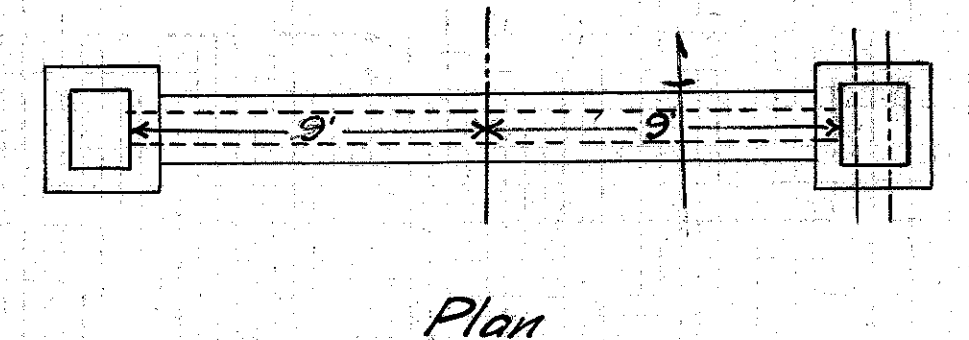
Culvert N° 21
 Material V16 Pipe
 Type V16 pipe (enc)
 Size 10"
 Length 36'
 Drainage area
 Work Required: Build std. 10" enc. vit. pipe culv. 36' long. 1 in. on L. + 1 Inlet Basin on R.
 Station 168+0

Grade Elevation	710.95	Estimated Quantities
Grade	1.7%	Excav.
Scale	1"=5'	1-2-3/4 conc.
Date	Mar. 1925	10" vit. pipe
		36 lin. ft.
		33 lbs. steel
		1 Inlet Basin



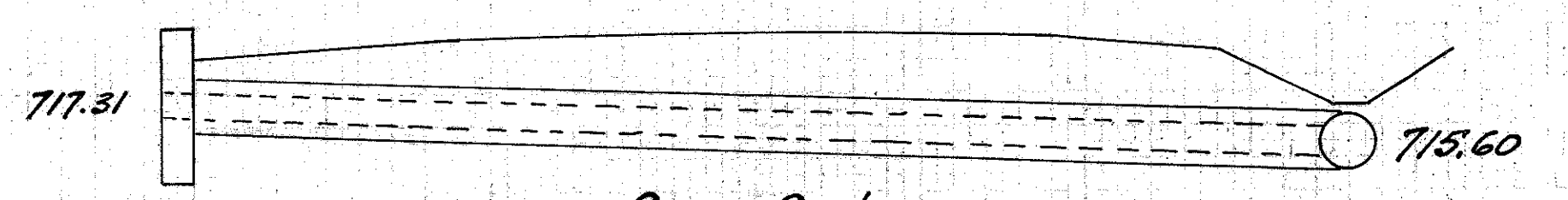
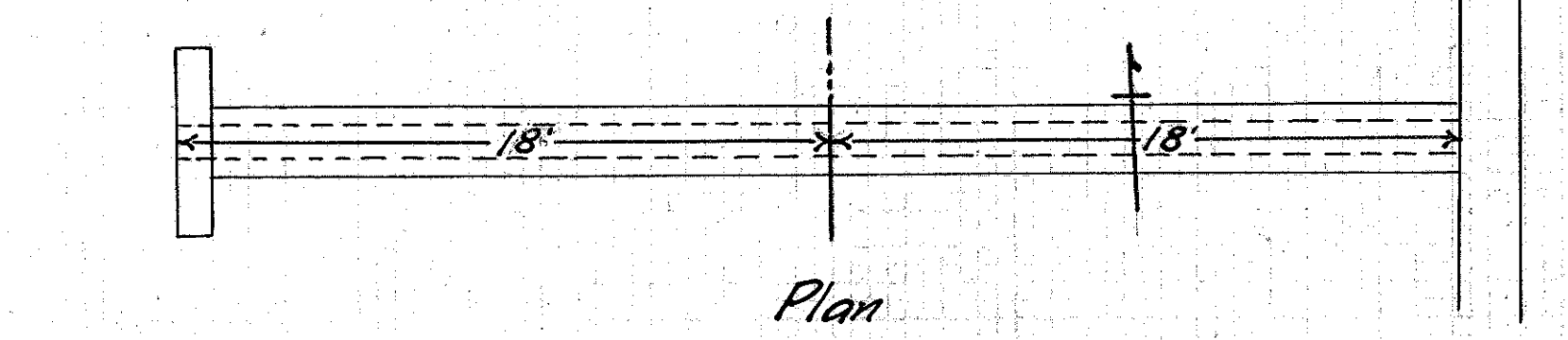
Culvert N° 14
 Material V16 pipe
 Type V16 pipe (enc)
 Size 12"
 Length 60'
 Drainage area
 Work Required: Remove 30' of 8" vit. pipe + build std. 12" encased vit. pipe culvert 60' long. 2-12" x 12" T. Extend each T with 12" of 12" vit. pipe (enc.) build 4 headwalls.
 Station 134+93

Grade Elevation	789.20	Estimated Quantities
Grade	2.56%	Excav.
Scale	1"=5'	1-2-3/4 conc.
Date	Mar. 1925	10" vit. pipe
		80 lin. ft.
		2 12" x 12" T.
		130 lbs. steel



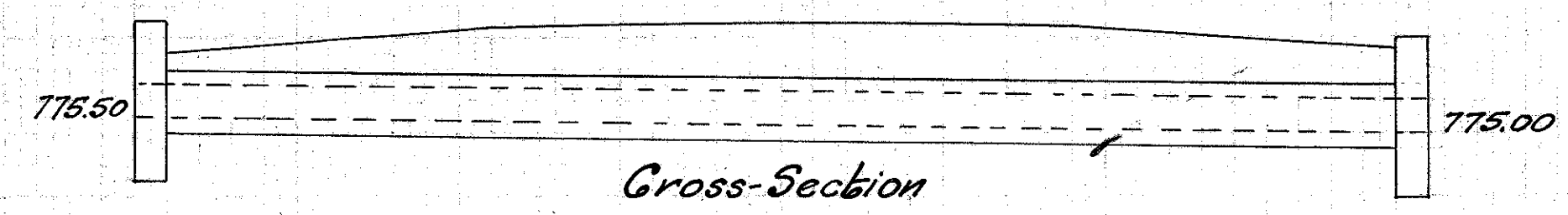
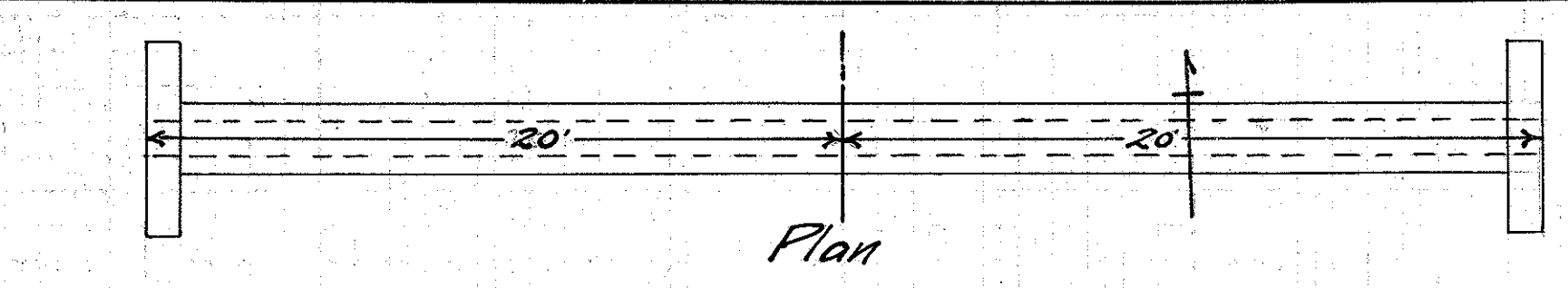
Culvert No. 17
 Material V16 pipe
 Type V16 pipe (enc)
 Size 10"
 Length 18'
 Drainage area
 Work Required: Build std. 10" encased vit. pipe culvert 18' long + 2 Inlet basins
 Station 156+50

Grade Elev.	769.10	Estimated Quantities
Grade	6%	Excav.
Scale	1"=5'	1-3-5 conc.
Date	Mar. 1925	10" vit. pipe
		18 lin. ft.
		Inlet basins 2



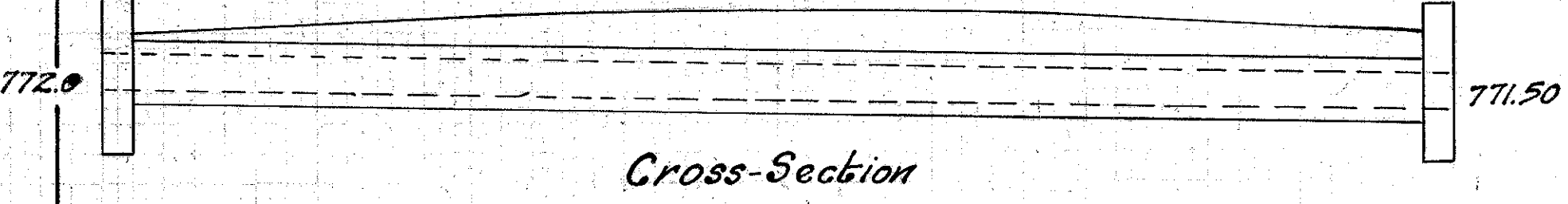
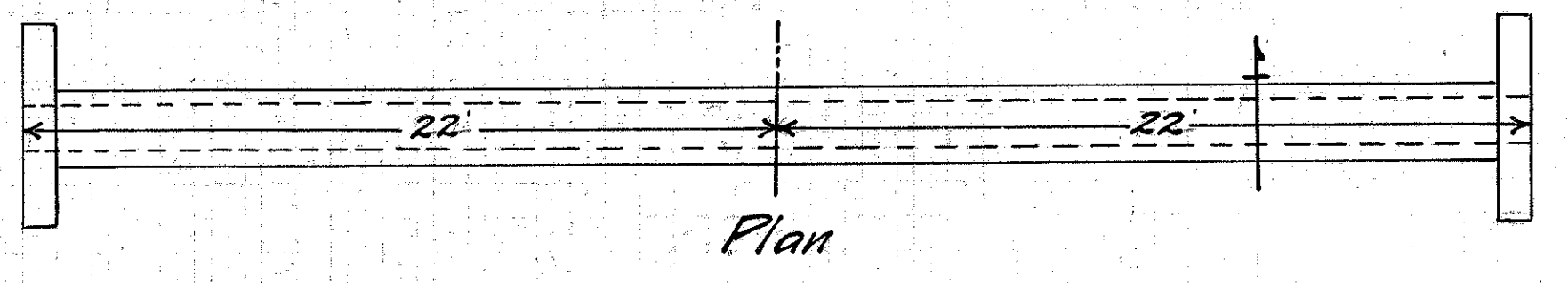
Culvert N° 20
 Material V16 Pipe
 Type V16 pipe (enc)
 Size 10"
 Length 36'
 Drainage Area
 Work Required: Build std. 10" enc. vit. pipe culvert 36' long + 1 in. on L. of R.
 Sta. 163+75

Grade Elevation	719.81	Estimated Quantities
Grade	2.5%	Excav.
Scale	1"=5'	1-2-3/4 conc.
Date	Mar. 1925	10" vit. pipe
		36 lin. ft.
		32 lbs. steel



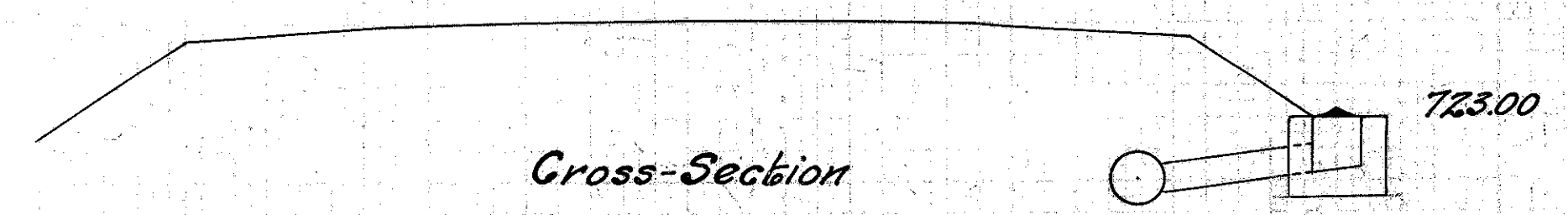
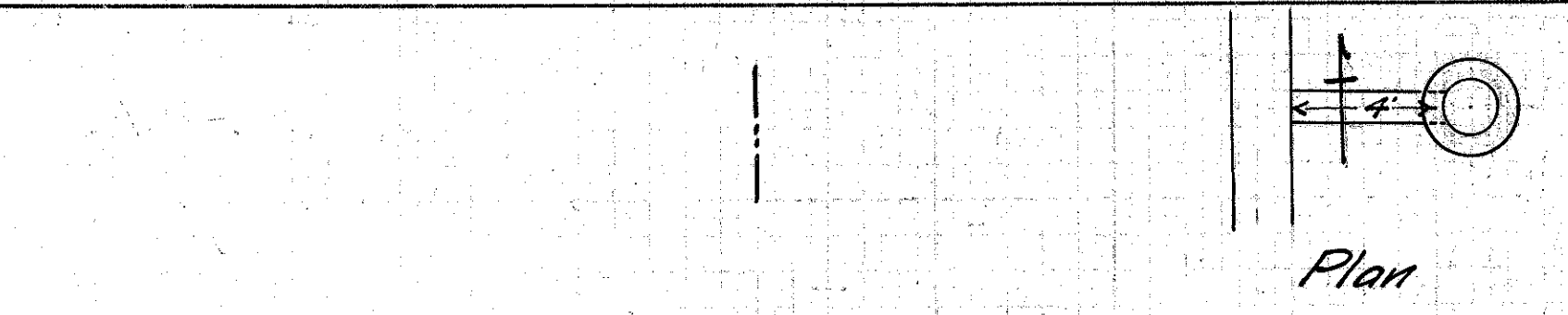
Culvert N° 13
 Material V16 pipe
 Type V16 pipe (enc)
 Size 12"
 Length 40'
 Drainage area
 Work Required: Build std. 12" encased vit. pipe culvert + 2 headwalls
 Station 126+90

Grade Elev.	778.55	Estimated Quantities
Grade	1.28%	Excav.
Scale	1"=5'	1-2-3/4 concrete
Date	Mar. 1925	2 cu. yds.
		1-3-5 conc. 4.3 cu. yds.
		12" vit. pipe
		40 lin. ft.
		65 lbs. steel



Culvert N° 16
 Material V16 pipe
 Type V16 pipe (enc)
 Size 15"
 Length 44'
 Drainage area
 Work Required: Build std. 15" encased vit. pipe culvert + 2 headwalls
 Station 148+66

Grade Elev.	774.73	Estimated Quantities
Grade	1.2%	Excav.
Scale	1"=5'	1-2-3/4 conc.
Date	Mar. 1925	2.3 cu. yds.
		5.7 cu. yds.
		15" vit. pipe
		44 lin. ft.
		70 lbs. steel



Culvert N° 19
 Material V16 Pipe
 Type V16 pipe
 Size 10"
 Length 4'
 Drainage area
 Work Required: Build Inlet basin 20' to R. of R. + connect to old 20" vit. pipe with 4"-10" vit. pipe
 Station 162+25

Grade Elevation	726.15	Estimated Quantities
Grade	5.6%	10" vit. pipe
Scale	1"=5'	Inlet basin
Date		