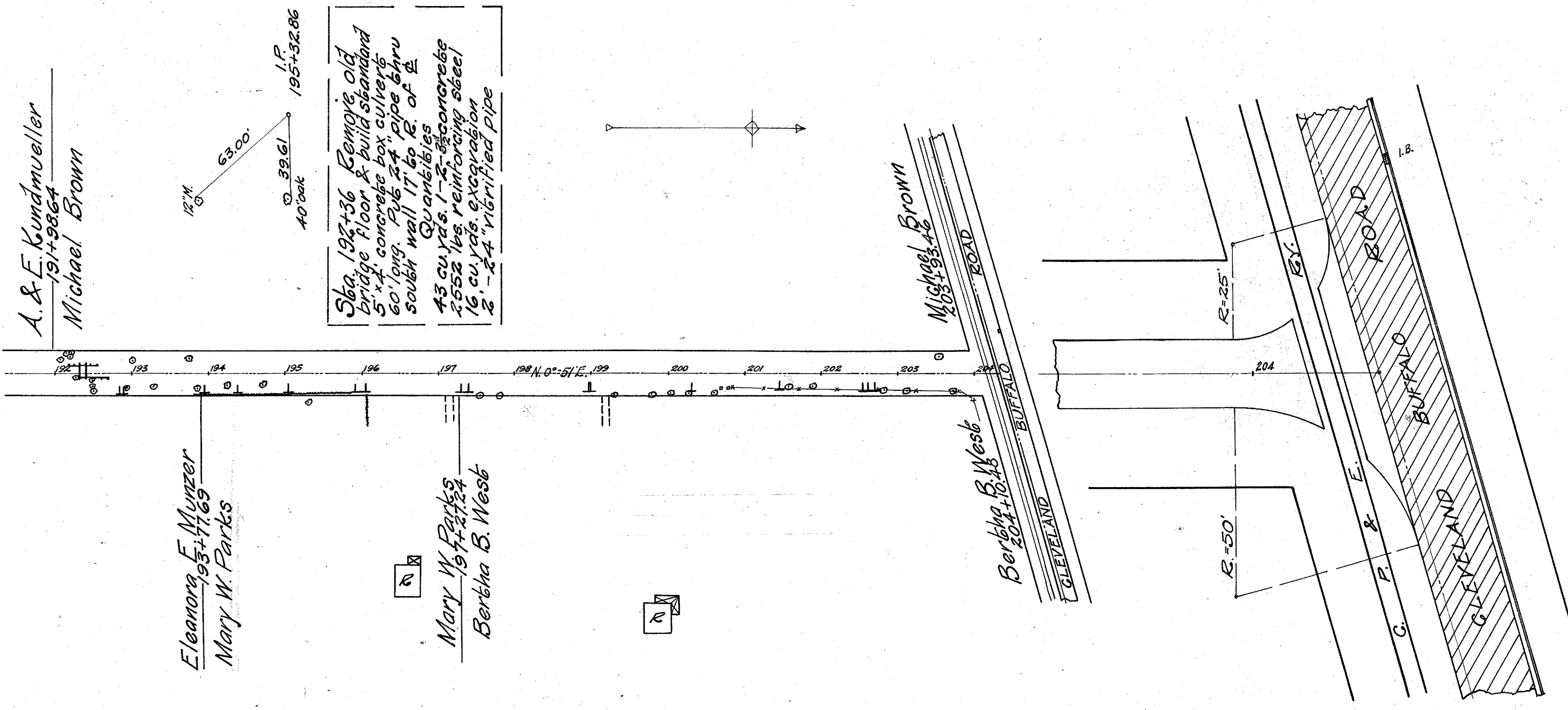


I. G.H. No. 466 SEC. D
LAKE COUNTY



A. & E. Kundmuller
191+98.64
Michael Brown

Eleanor F. Murzer
193+71.69
Mary W. Farks

Mary W. Farks
197+27.24
Bertha B. West

Bertha B. West
201+62.18
Cleveland

G.P. & E. Buffalo Road
Cleveland

Sba. 192+36 Remov. old bridge floor & build standard 5' x 4' concrete box culvert 60' long. 24" pipe thru south wall 17' to E of E Quantities
43 cu. yds. 1-2" concrete 1552 lbs. reinforcing steel 16 cu. yds. excavation 2' - 24" vibrated pipe

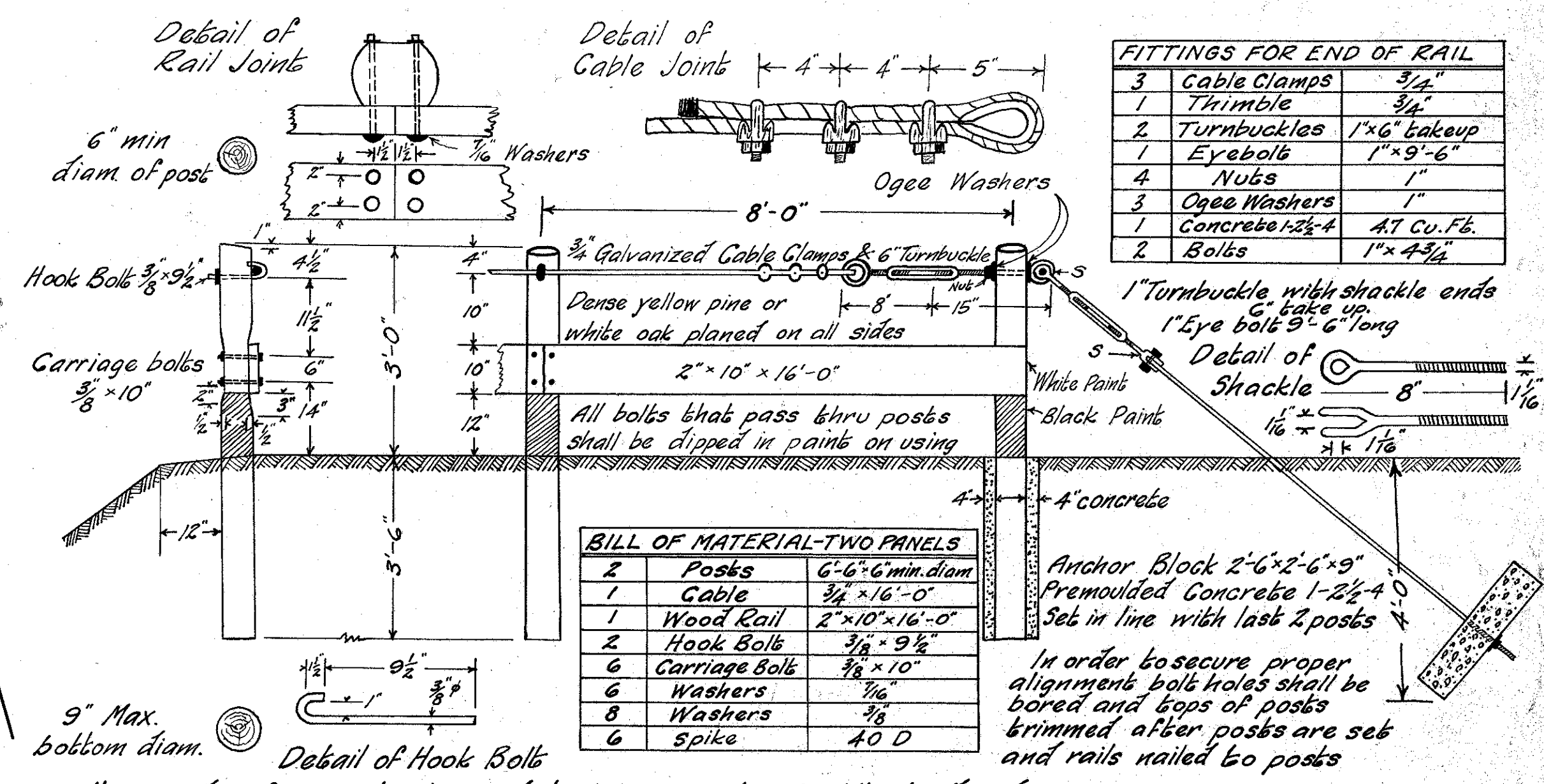
B.M. # 50 Sba. 195+32
Spike in root 40" oak
39' 60" R. of C
Elev. = 690.26

B.M. # 51 Sba. 200+26
Spike in root 18" elm
28' 60" R. of C
Elev. = 685.00

B.M. # 52 Sba. 203+13
Spike in root 36" maple
22' 60" R. of C
Elev. = 676.80

B.M. # 53 Sba. 204+33.15
Monument on E. of G. & E. rd. on S. Solon-Wilby Rd.
Elev. = 674.20

Intersection at Sta. 204+
87 sq. yds. pavements from
Sta. 204+0 to 204+33
Scale 1" = 20'



All exposed surfaces not galvanized to have 3 coats of white lead and linseed oil paint. All surfaces in contact not galvanized shall receive one coat of above paint before construction.
Posts to be of straight sound white oak 6" min. diameter round posts, creosoted by dipping the lower 4'-6". All iron and steel to be galvanized except cast iron. Further details contained in General Specifications, Item R-4.

TYPE 'D' GUARD RAIL

