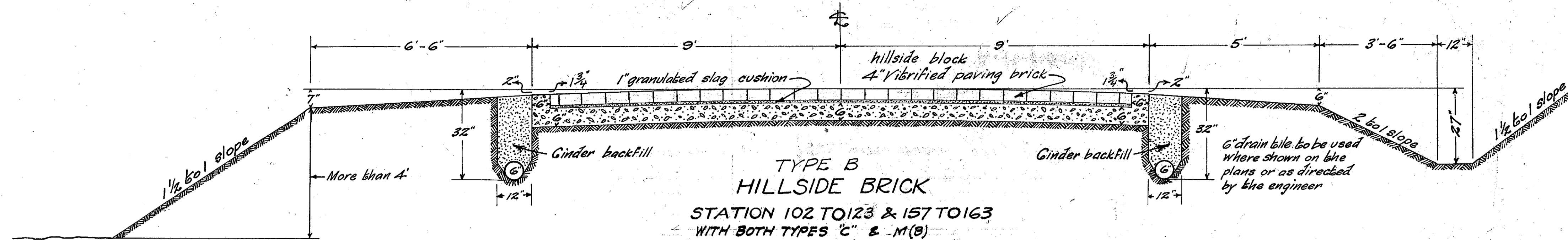
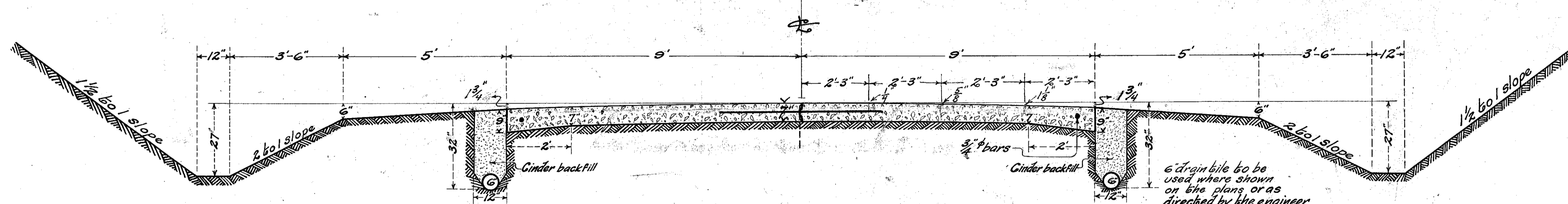


I.C.H. No. 466 SEC. D
LAKE COUNTY

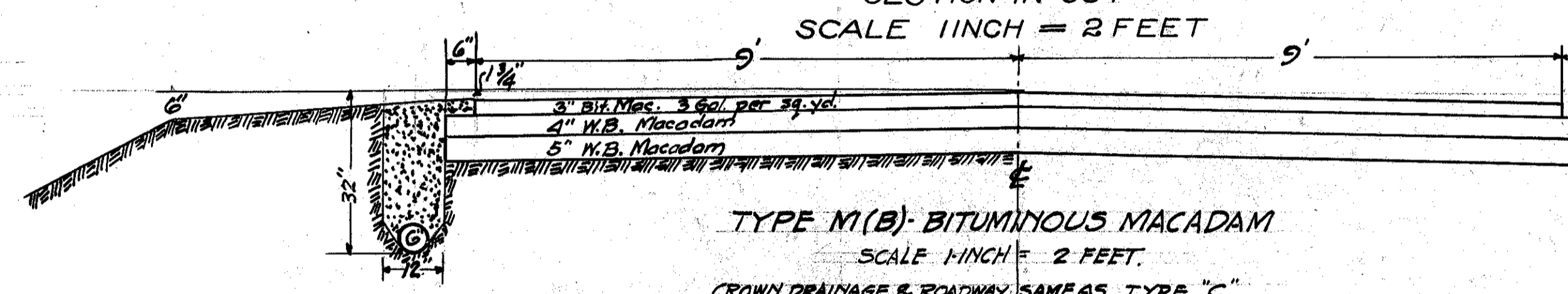


TYPE B
HILLSIDE BRICK
STATION 102 TO 123 & 157 TO 163
WITH BOTH TYPES 'C' & 'M(B)'

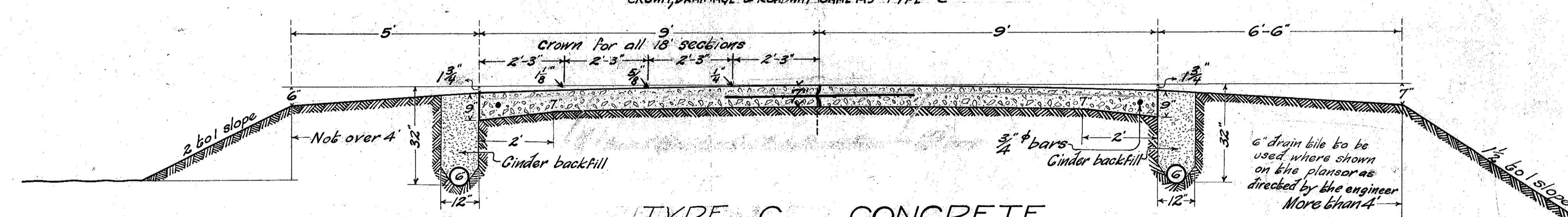


TYPE C CONCRETE
STD. DR. #100
SECTION IN CUT
SCALE 1 INCH = 2 FEET

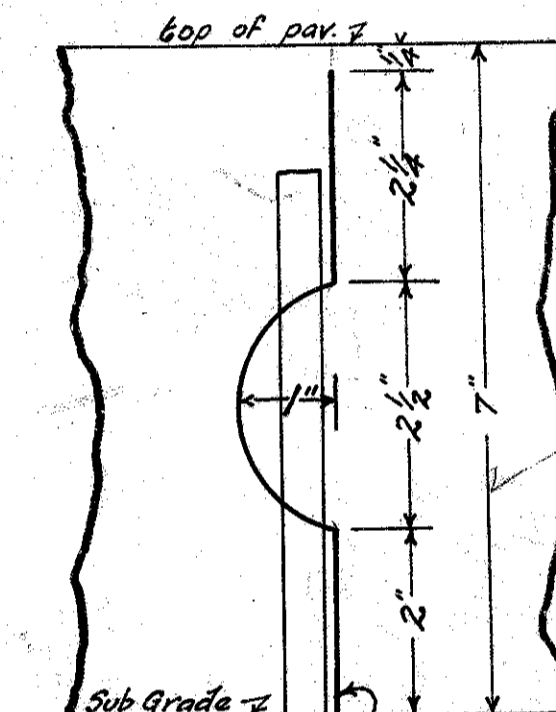
Excavation Computed for type C = 33596 cu. yd.
Additional Excavation for type M(B)
Area pavement type C = 13 sq ft
Length in cut = 13800' x 9.8' = 135240 cu. ft.
Excavation type M(B) = 38605 cu. yd.



TYPE M(B) BITUMINOUS MACADAM
SCALE 1 INCH = 2 FEET
CROWN, DRAINAGE & ROADWAY SAME AS TYPE 'C'



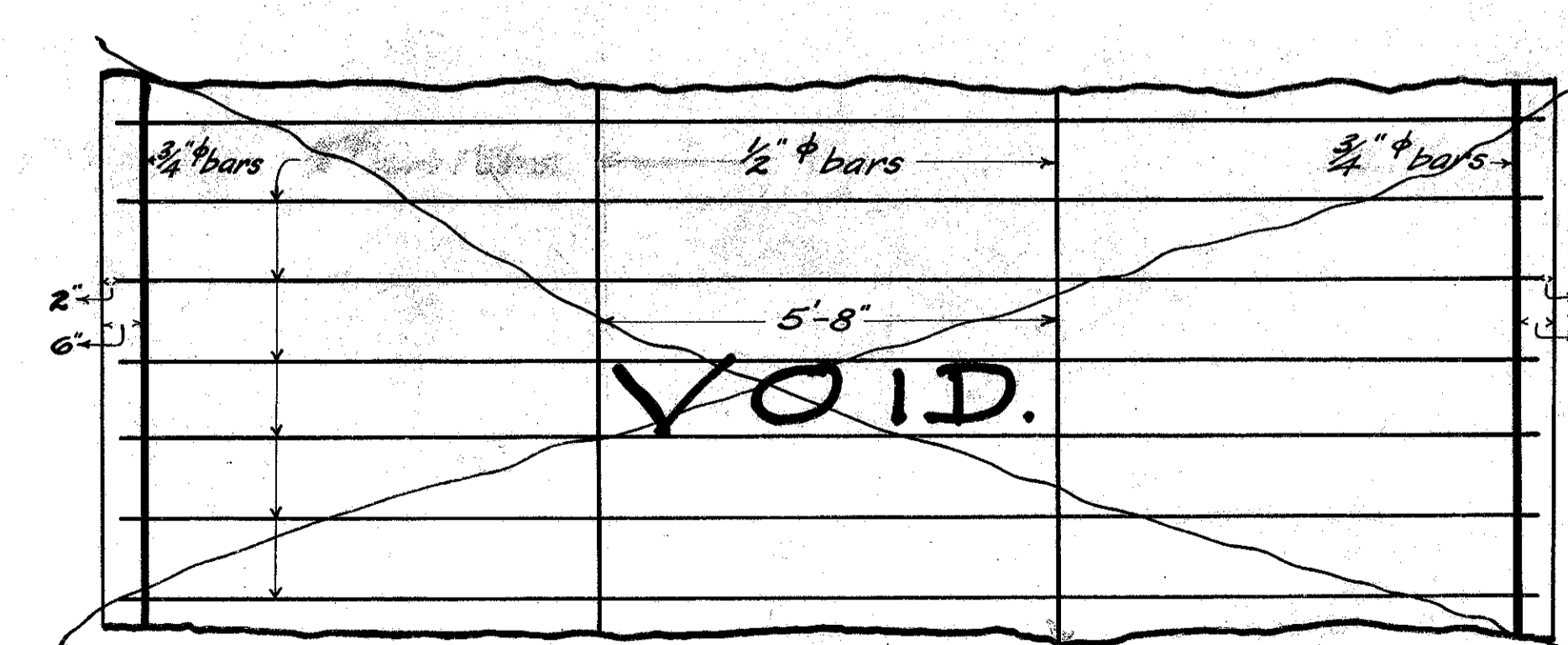
TYPE C CONCRETE
STD. DR. #100
SECTION IN FILL
SCALE 1 INCH = 2 FEET



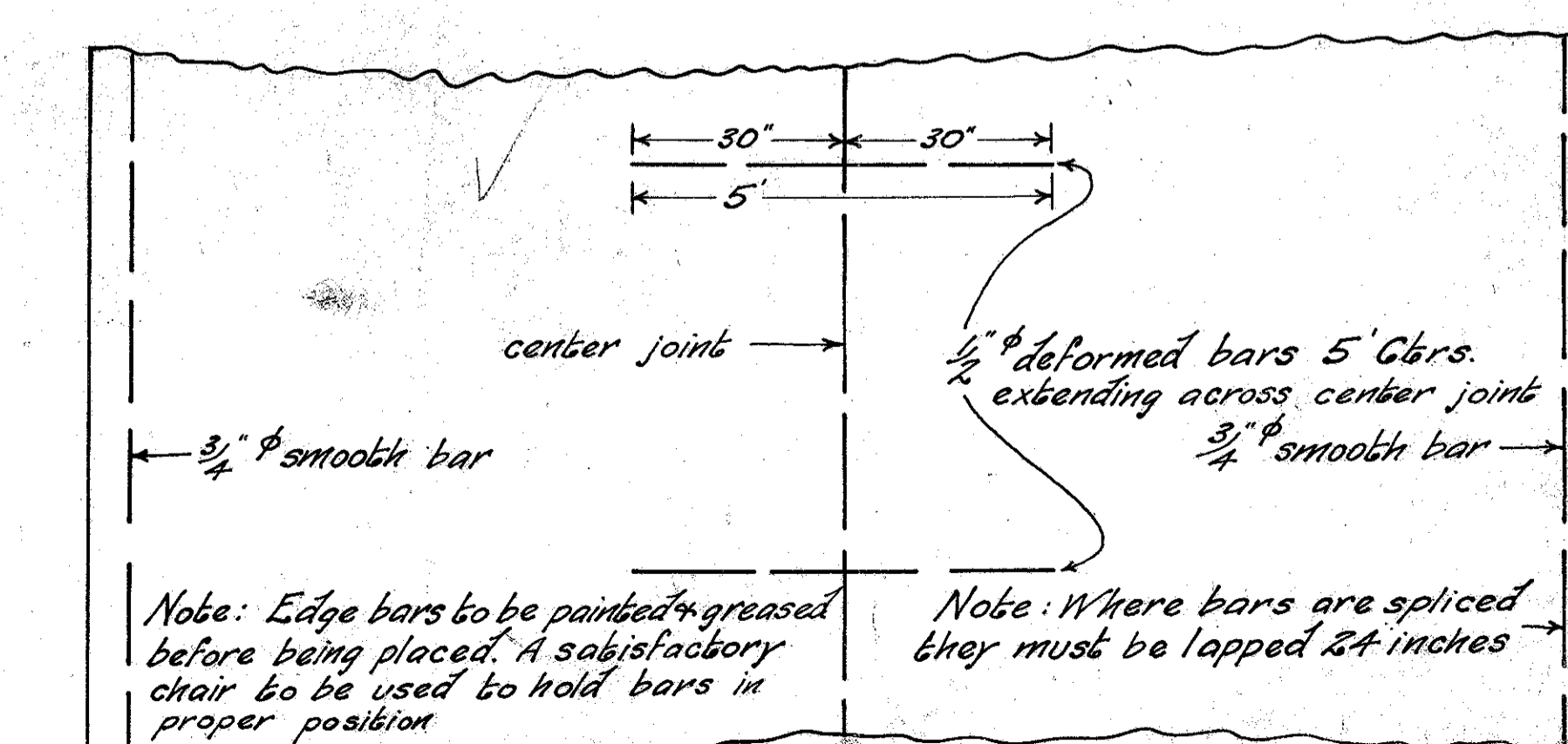
not less than 18 gauge painted or galvanized metal
3/8" round pin 15" long to be spaced not more than 3'-4" centers. Channel shaped pin, 16 gauge metal, may be used.

Detail of Joint

- Note: Details of pavement will be completed in accordance with specific instructions for the type determined upon for the specific project.
- Note: Pavement on all curves will be super-elevated and on all curves where the degree of curvature is 5° or more will be widened. See tables on alignment sheets.
- Note: All materials removed from roadway which are not to be used as per contract shall be piled neatly on right-of-way not more than 300 feet from place of removal for the County Commissioners.



VOID
PLAN SHOWING REINFORCING
SCALE 1 INCH = 2 FEET



Note: Edge bars to be painted & greased before being placed. A satisfactory chair to be used to hold bars in proper position.
Note: Where bars are spliced they must be lapped 24 inches.

PLAN

589