

PARCEL 48
CURVE DATA
PROPOSED R/W LINE
Δ = 98° 38' 52"
D = 154' 51' 13"
R = 37.00'
T = 43.05'
L = 63.70'
Ch = 56.12'
E = 19.77'

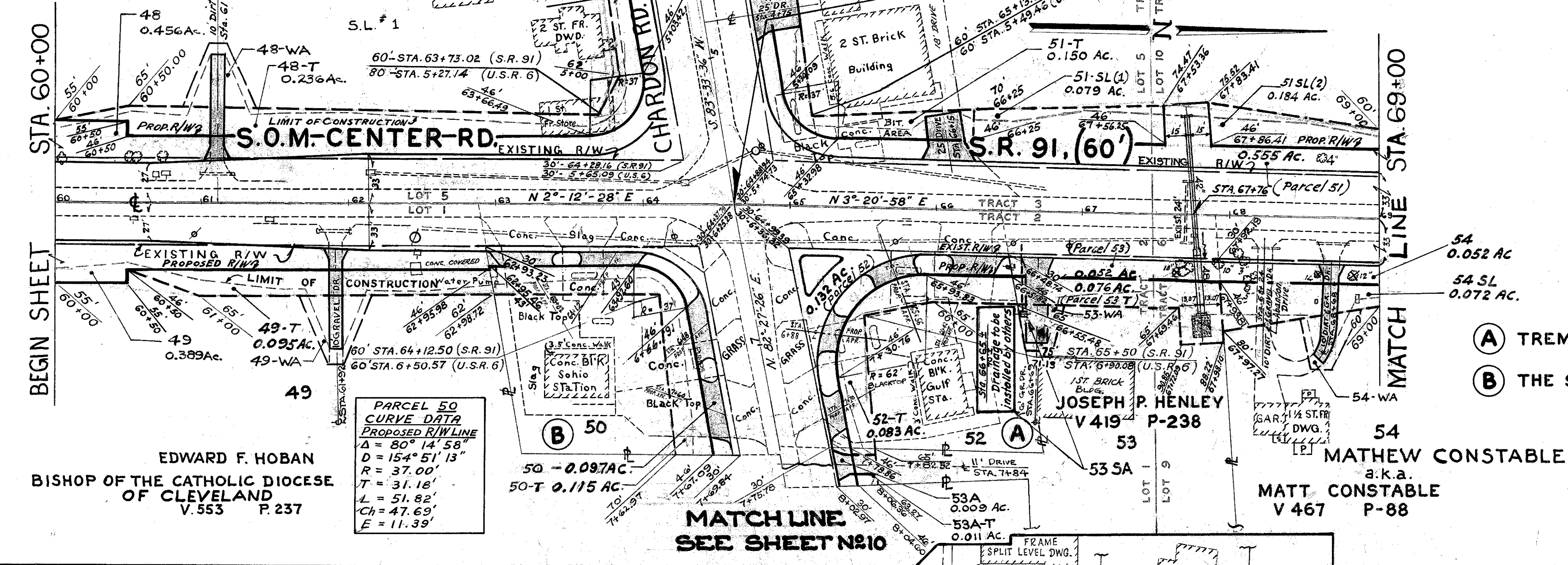
SEE SHEET # 10 FOR CONTINUATION OF PARCEL 48

JOHANNA ALLOTMENT
BLOCK "A" VOL "K" PG. 18

See Sheet # 10

SEE SHEET # 10 FOR CONTINUATION OF PARCEL 51

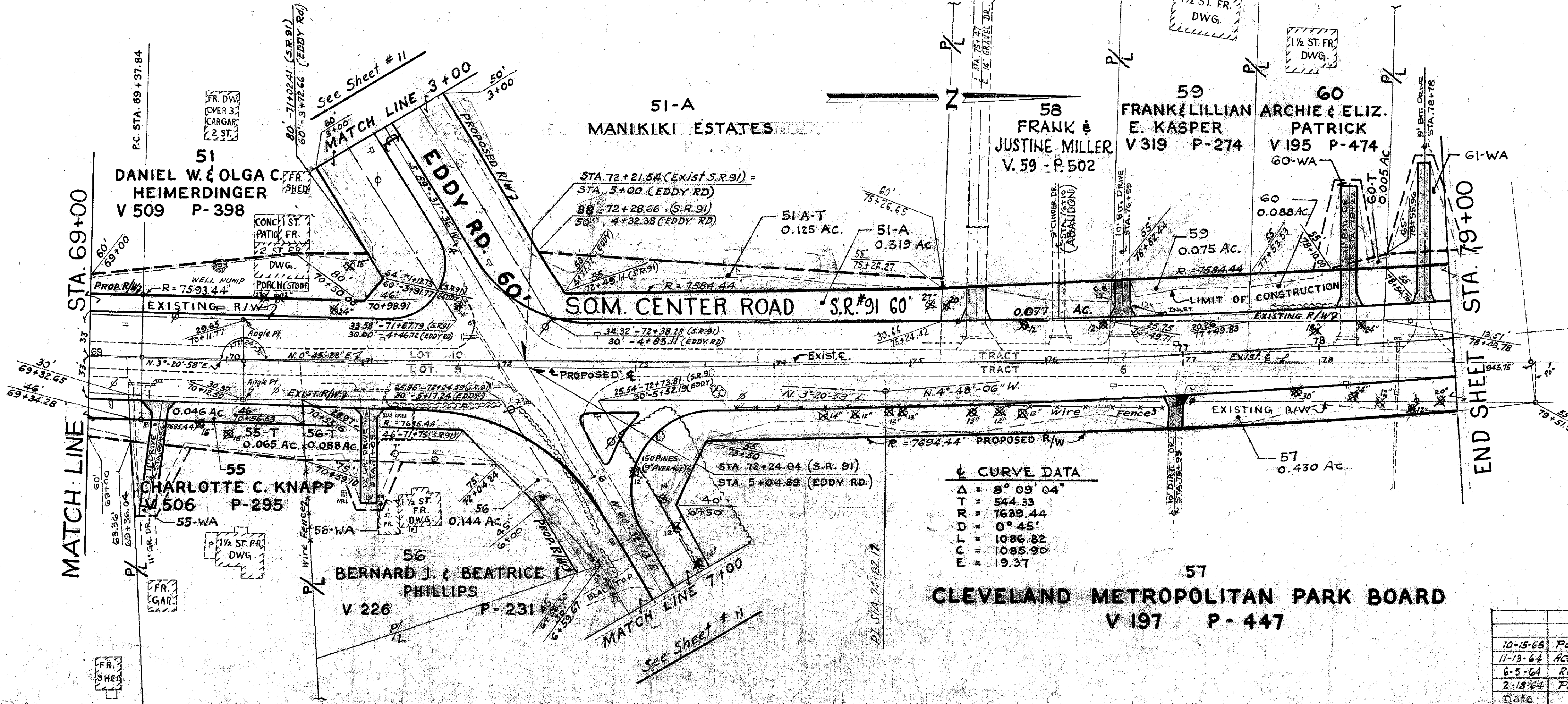
PARCEL 51
CURVE DATA
PROPOSED R/W LINE
Δ = 80° 12' 38"
D = 154' 51' 13"
R = 37.00'
T = 31.16'
L = 51.80'
Ch = 47.67'
E = 11.37'



R/W. 6
12

- (A) TREMARCO CORP., V 419 P-240
- (B) THE STANDARD OIL CO., V 398 P-119

PARCEL 52
CURVE DATA
PROPOSED R/W LINE
Δ = 100° 53' 32"
D = 92' 24' 45"
R = 62.00'
T = 75.07'
L = 109.18'
Ch = 95.48'
E = 35.36'



CURVE DATA
Δ = 8° 09' 04"
T = 544.33
R = 7639.44
D = 0° 45'
L = 1086.82
C = 1085.90
E = 19.37

57
CLEVELAND METROPOLITAN PARK BOARD
V 197 P-447

Date	REVISIONS	BY
10-15-65	Pct. 53-SA added	A.M.
11-13-64	Increases changed on Parcel 53 and 53-T	A.M.
6-5-64	REVISED R/W LINE PARCEL 50	K.S.
2-18-64	Parcel 51-A - Property Owner Changed	A.M.