

B.M. #3 - SPIKE IN CEI-ORT. POLE, SE COR. S.R.#91 + U.S.R.#6
 STA. 64+21 S.R.#91 (24" R) ELEV. = 849.038

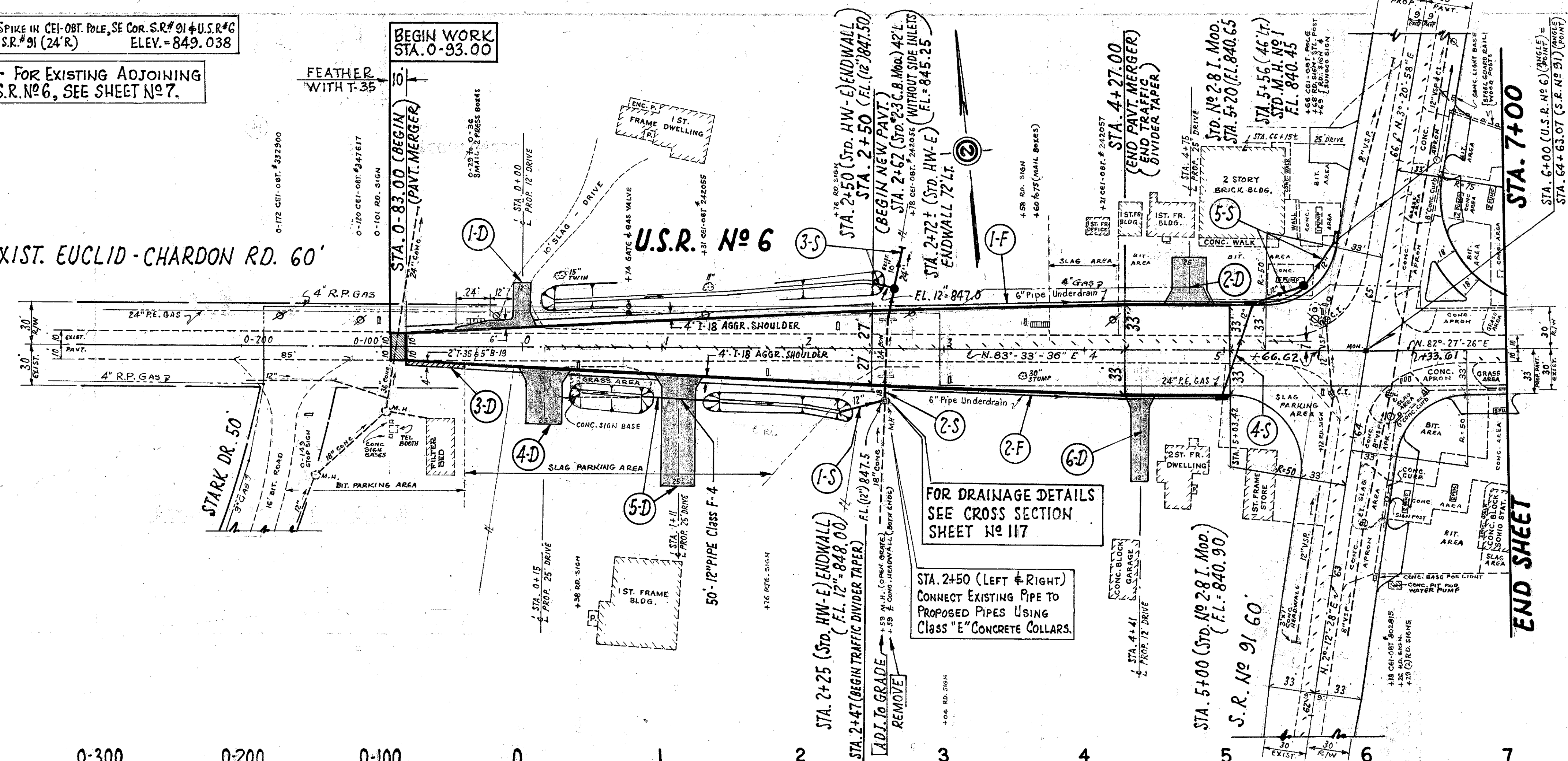
NOTE - FOR EXISTING ADJOINING
 PAVT. U.S.R. #6, SEE SHEET #7.

LAKE COUNTY
 LAK 91-0.00 (2.38)

DES. NO.	DATE	PROJECT	TYPE
2	0/00		

34
146

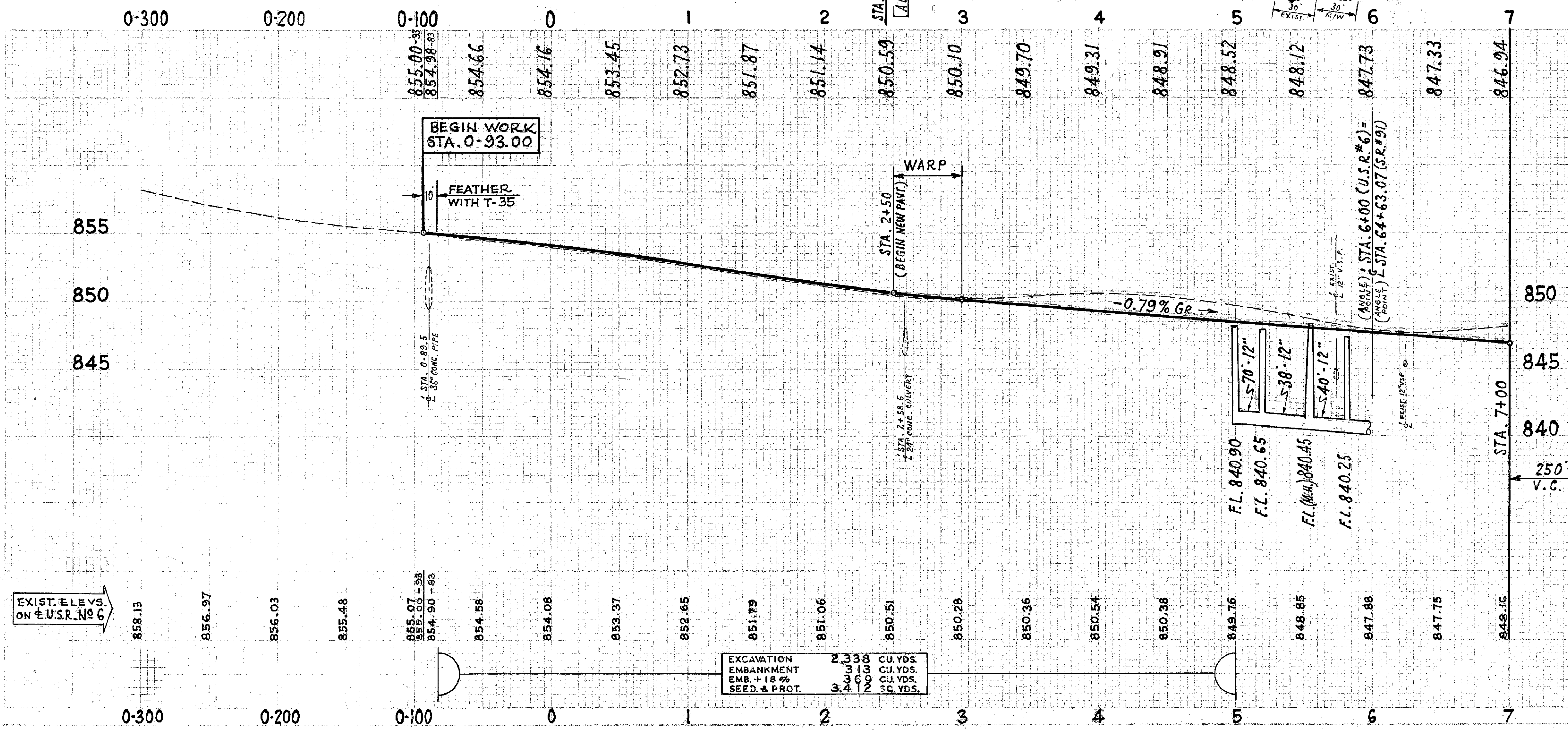
EXIST. EUCLID-CHARDON RD. 60'



Ref. No	Station		SIDE R OR L	ITEM I-1	
	FROM	TO		6" PIPE Class I-3 (DEEP)	6" OUTLET PIPE Class F-4
1-F	2+65±	5+56	L	268	20
2-F	2+63±	5+00	R	225	10
TOTAL				493	30

Station		ITEM I-23
FROM	TO	PRECAST WHITE PORTLAND CEMENT TRAFFIC DIVIDERS
0+19	5+47	45
TOTAL		45

LENGTH OF WORK - S.R. 6
 STA. 0-93.00 TO STA. 5+66.62 - 659.62 LIN. FT.
 STA. 6+33.61 TO STA. 12+87.00 - 653.39 LIN. FT.
 NET LENGTH OF WORK - 1313.01 LIN. FT.



Ref. No	Station	ITEM I-1 ... LIN. FEET		ITEM I-8		ITEM I-2
		Class J-1 PIPE	Class I-1 PIPE	STD. M.H. No. 1	STD. M.H. No. 2-8	
1-S	FROM 2+25 TO 2+59	12"	24"	EACH	EACH	REMOVAL PORTIONS OF EXIST. STRUCTURE
2-S	2+59 TO 2+72±	8	36	1	1	MASONRY
3-S	2+72± TO 5+20	12	16	1	1	ELYS. LUMP SUM
4-S	5+20 TO 5+40	70	78	1	1	LUMP SUM
5-S	5+40 TO 5+56					
TOTAL		70	20130	2	2	.97

PLAN & PROFILE - U.S.R. #6 - STA. 0-300 to STA. 7+00