

B.M. #6 - "X" ON END OF WALK TO HOUSE @ S.E. COR. TIMBERLINE DR # S.R.#91. ADJ. ELEV. = 789.314

B.M. #7 - SPIKE IN NORTH ROOT 24" BIRCH STA. 102+68 (S.R.#91) 30' L. ELEV. = 733.195

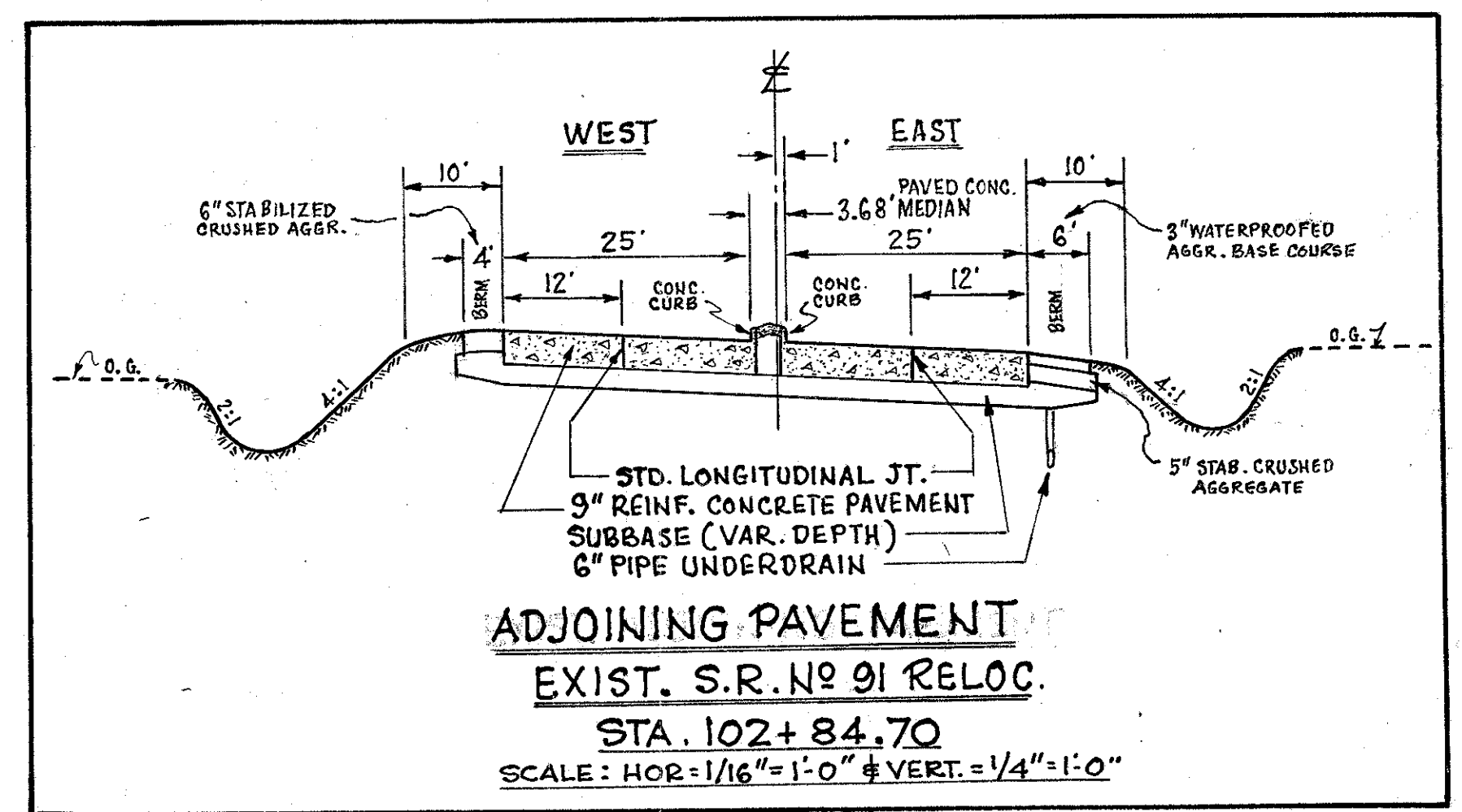
LAKE COUNTY
LAK. - 91-(0.00) - (2.38)

28
146

NOTE: 28 EXISTING TRAFFIC DIVIDERS ON EXISTING S.R.#91, STA. 99+47 to STA. 102+71

S.R. #91 RELOC. CURVE DATA
D = 50.00'-00"
R = 145.92'
Δ = 16° 45' 28"
L = 168.78'
ST = 335.16'
Ch = 333.96'
M = 12.36'
Spiral
θ = 30.45°-00"
L = 150.00'
L.T. = 100.00'
S.T. = 50.02'
L.C. = 149.97'
K = 74.99'
P = 0.82'

S.R. #91 RELOC. EXIST. CURVE DATA
Spiral
θ = 2° 37' 30"
L = 150'
L.T. = 100.01'
S.T. = 50.01'
L.C. = 149.99'
K = 74.99'
P = 0.57'
Central Curve
D = 30'-30'-00"
R = 1637.02'
Δ = 9° 45'-00"
L = 278.57'
Ch = 278.44'
E = 5.94'

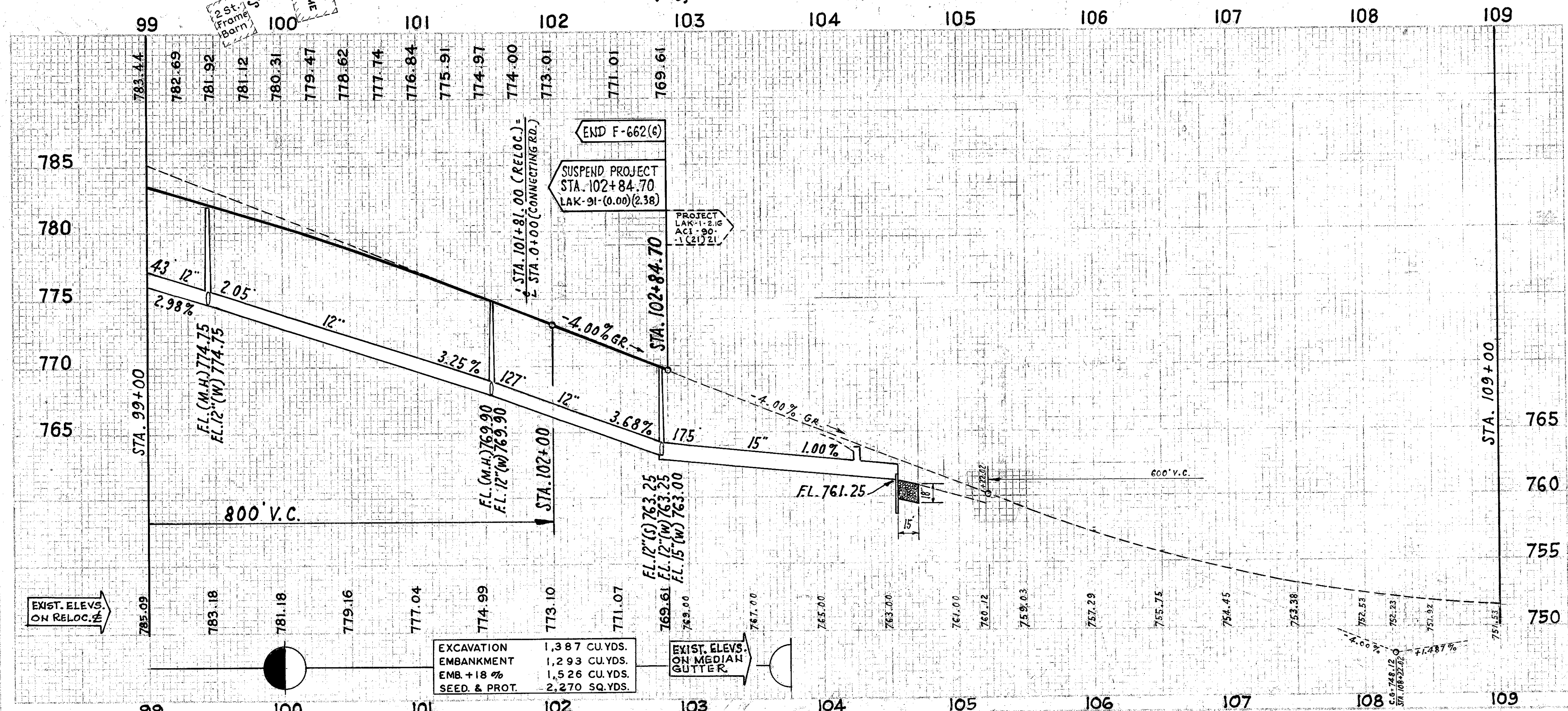


6" UNDERDRAINS

Ref. No	Station	Side	ITEM I-1				
			6" PIPE Class I-3 (DEEP)	6" PIPE Class J-1 Sec. M-C.6(b) or M-6.8(b)	6" PIPE SPECIAL Class J-1 Sec. M-C.6(b) or M-6.8(b)	6" PIPE OUTLET Class F-4	
FROM	TO		LIN. FT.	LIN. FT.	EACH	LIN. FT.	
1-F	99+00	L	102+84.70	346	97	1	
2-F	99+00	R	102+84.70	322			40
TOTAL			668	97	1	40	

SUPERELEVATION TABLES

STA.	L.F.	P.A.V.T.	R.A.T.	STA.	L.F.	P.A.V.T.	R.A.T.	STA.	L.F.	P.A.V.T.	R.A.T.
94+40.84	792.85	793.30	792.85	97+50	788.09	787.47	786.90	101+00	777.63	776.94	776.13
+50	792.74	793.17	792.74	+70.84	787.58	787.00	786.34	+06	777.39	776.60	775.91
+25	792.45	792.81	792.36	+75	787.38	786.85	786.12	+25	776.63	775.91	775.28
95+00	792.44	792.44	791.99	98+00	787.00	786.21	785.42	+50	775.65	774.97	774.43
+25	791.80	792.04	791.59	+25	786.34	785.55	784.76	+66	774.93	774.30	773.85
+50	791.06	791.17	790.72	+75	785.66	784.87	784.08	+75	774.58	774.00	773.50
+25	791.45	791.62	791.17	+50	784.95	784.16	783.37	102+00	773.52	773.01	772.56
+75	791.06	791.17	790.72	+75	784.23	783.44	782.65	+25	772.49	772.01	771.56
96+00	790.30	790.30	790.26	99+00	783.48	782.69	781.90	+50	771.45	771.01	770.56
+25	790.24	790.22	789.77	+50	782.71	781.92	781.13	+56	771.20	770.77	770.33
+50	789.87	789.72	789.27	+75	781.91	781.12	780.33	+75	770.40	770.01	769.64
+25	789.41	789.19	788.74	100+00	781.10	780.31	779.52	+84.70	769.94	769.61	769.27
97+00	789.00	788.64	788.19	+25	780.26	779.47	778.68				
+10.84	788.83	788.80	787.92	+50	779.41	778.62	777.83				
+25	788.53	788.04	787.53	+75	778.53	777.74	776.95				



STORM SEWERS

Ref. No	Station	Class	PIPE	ITEM I-1		ITEM I-8		TOTAL
				LIN. FT.	MANHOLE	ITEM I-8	ITEM I-10	
1-S	99+00	12"	15"	240	1	1	1	10
2-S	101+50	12"	15"	137	1	1	1	10
3-S	102+70	12"	15"	21	1	1	1	10
TOTAL				398	3	2	1	10

MONUMENTS

Ref. No	Station	Loc.	ITEM I-8		ITEM I-21	
			ITEM I-8	ITEM I-10	ITEM I-21	ITEM I-22
1-M	102+06.00	W	1	1	1	1
2-M	P.C. 104+88.64	W	1	1	1	1
TOTAL			2	1	1	1

FOR R/W & CURVE DATA, SEE SHEET NO 138

TRAFFIC DIVIDERS

Station	ITEM I-23	ITEM E-8
FROM 99+05 TO 102+77	EACH 63	EACH
FROM 99+47 TO 102+71		EACH 28
TOTAL	63	28

PLAN & PROFILE - S.R. #91 RELOC. - STA. 99+00 to STA. 109+00