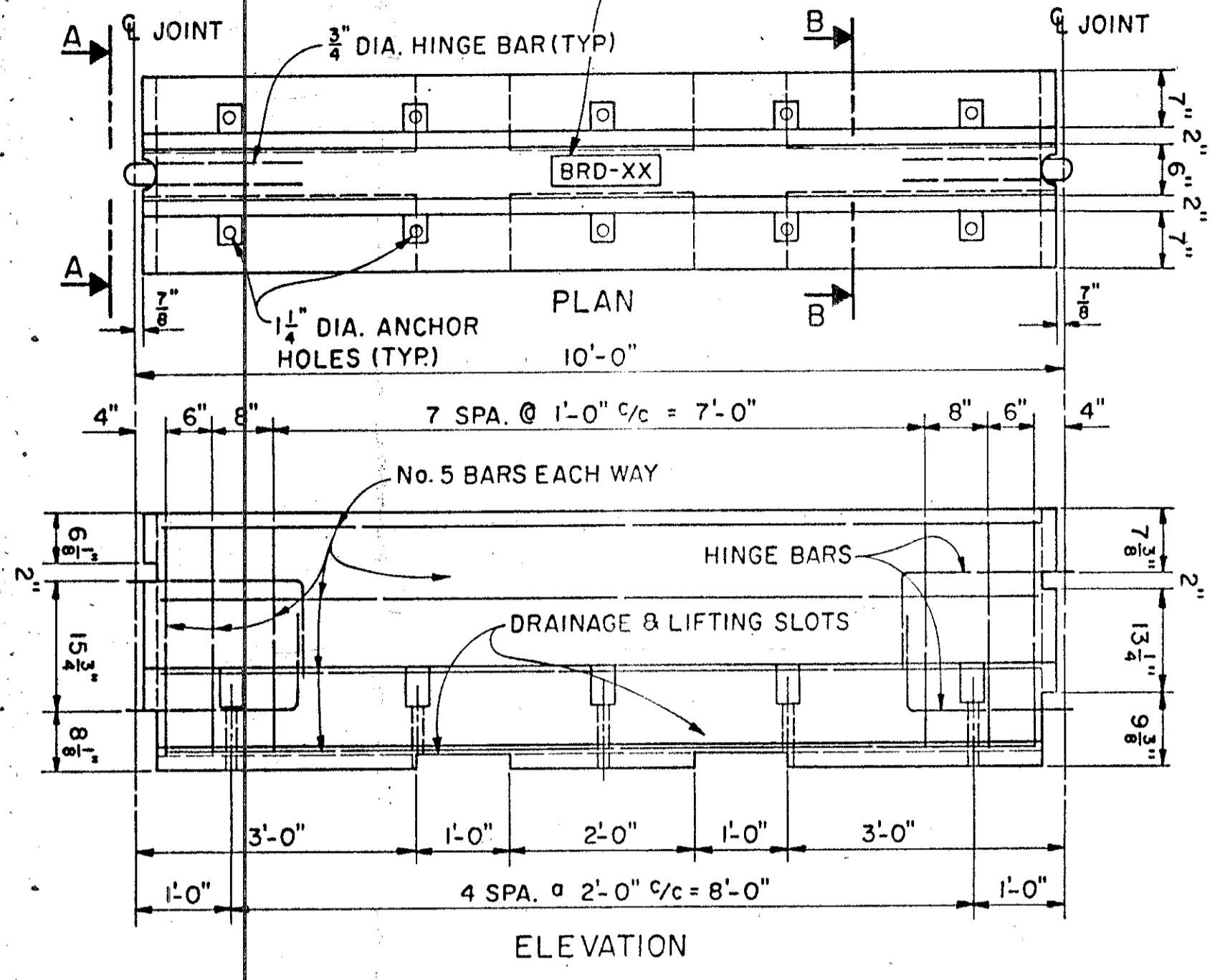


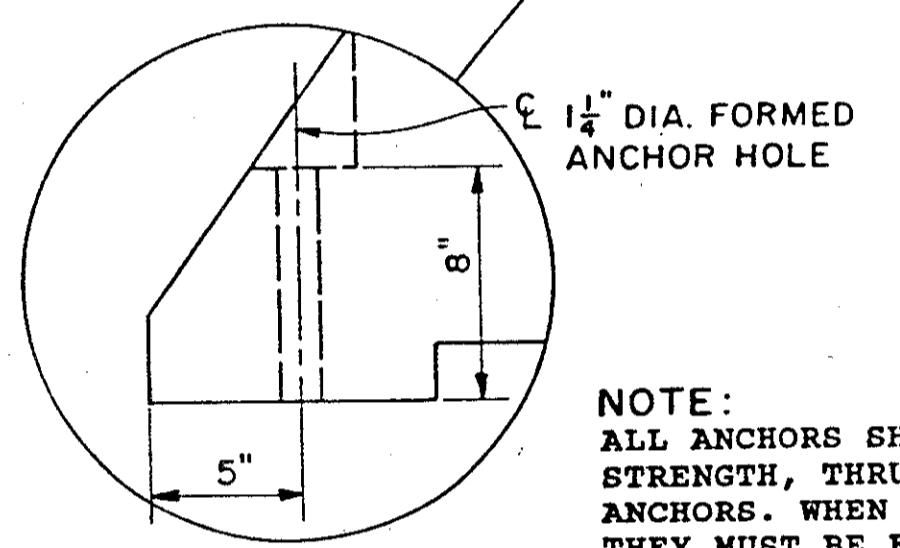
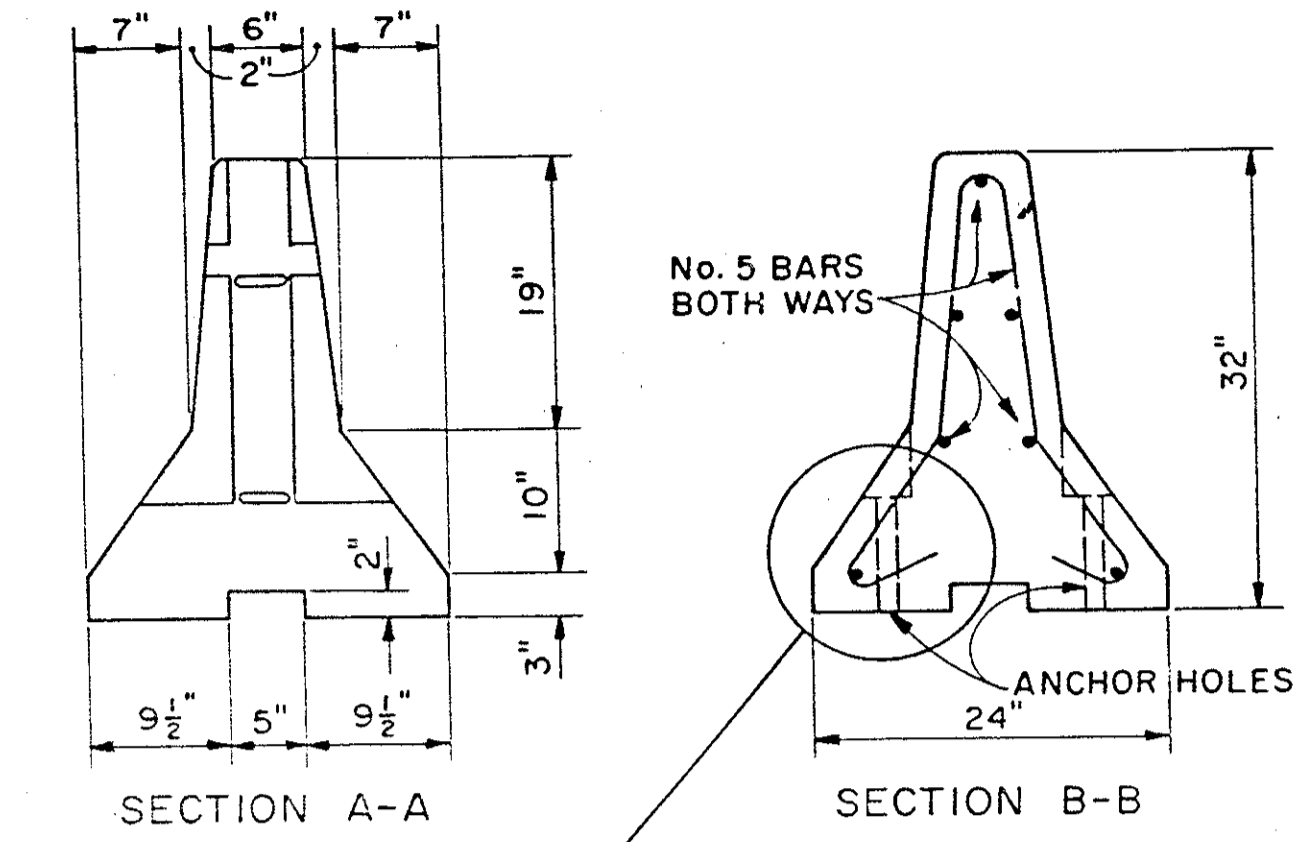
MAINTENANCE OF TRAFFIC

TEMPORARY CONCRETE BARRIER DETAILS

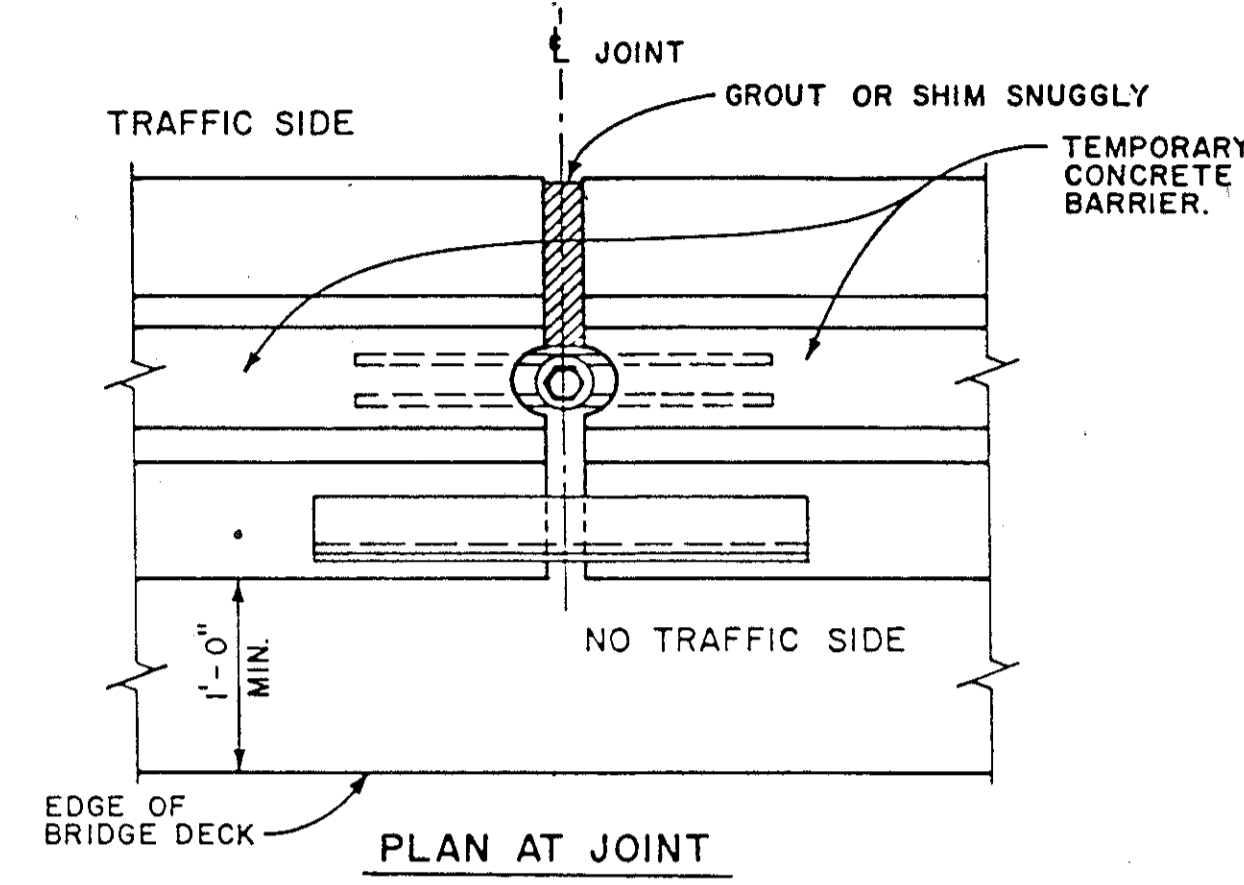
ALL NEW BARRIER SEGMENTS MADE ACCORDING TO THE PROPOSED DESIGN, OR AN APPROVED EQUAL, SHALL BE CLEARLY MARKED, SUCH AS "BRD-XX" (WHERE XX = THE YEAR CAST).



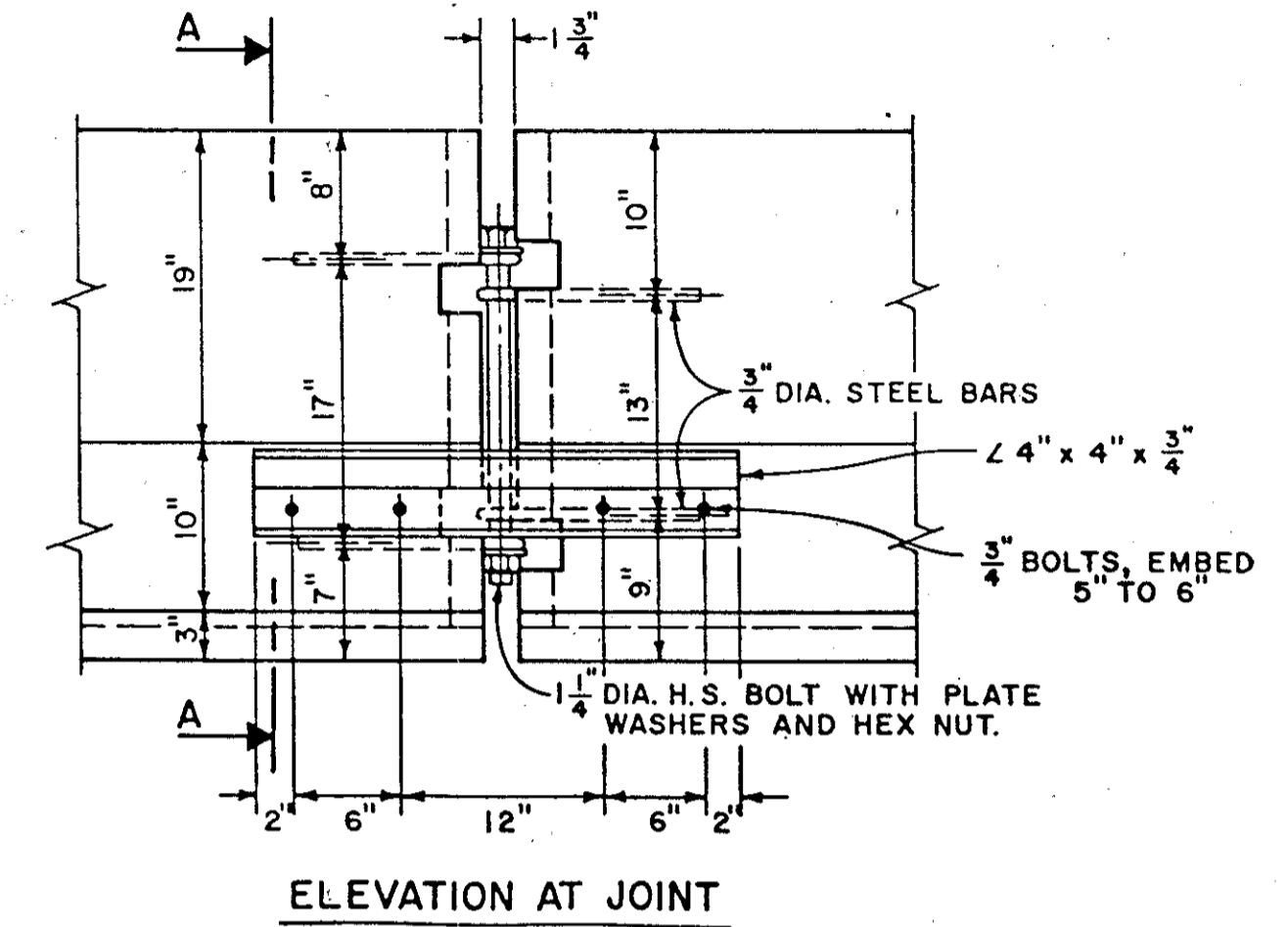
PROPOSED BARRIER DETAILS



NOTE: WHERE ANCHORING IS REQUIRED, ALL ANCHORS SHALL BE 1" DIAMETER, HIGH STRENGTH, THRU BOLTS OR APPROVED RESIN ANCHORS. WHEN RESIN ANCHORS ARE USED, THEY MUST BE EMBEDDED A MINIMUM OF 6" INTO FIRM CONCRETE.

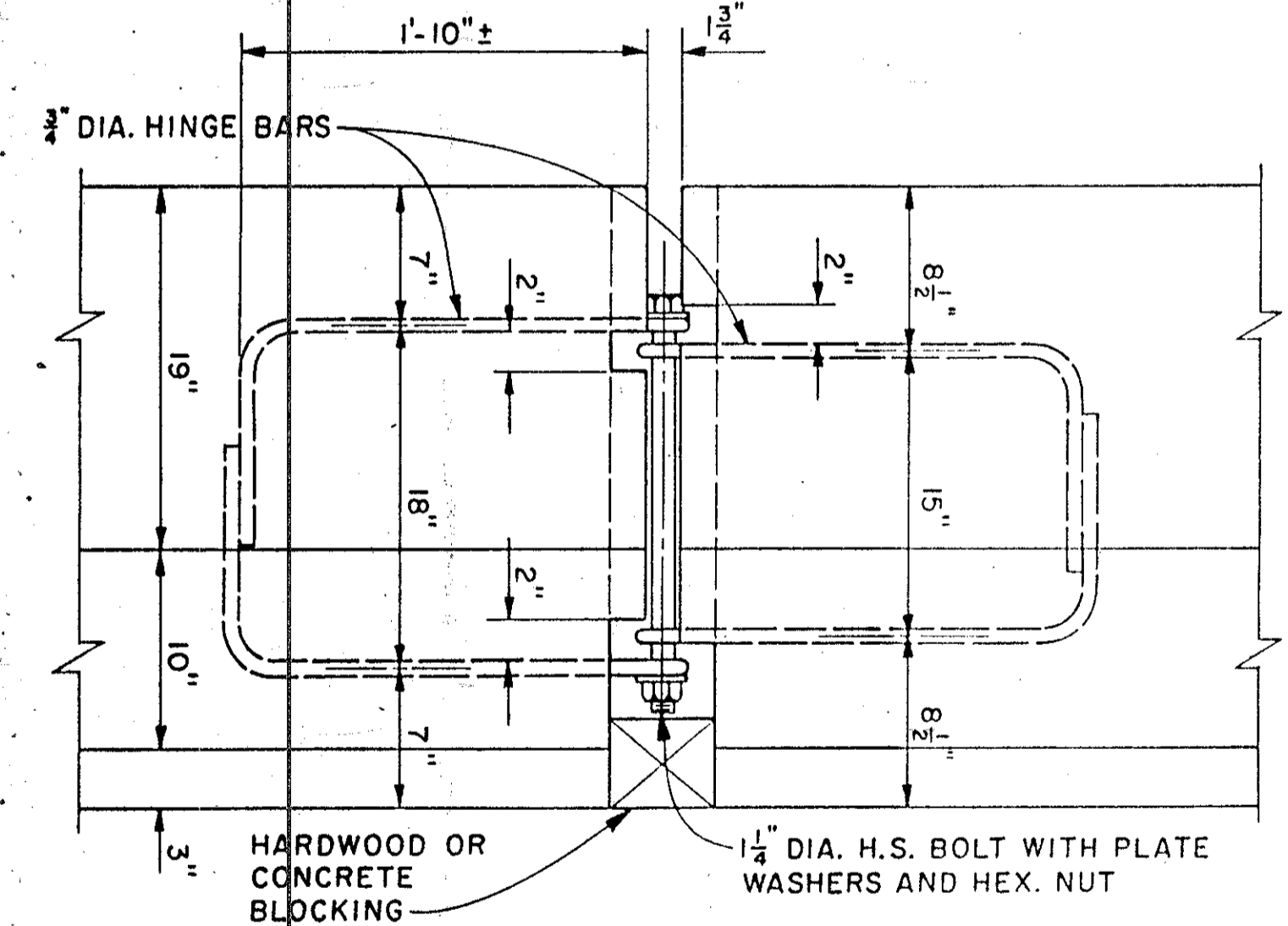


PLAN AT JOINT



ELEVATION AT JOINT

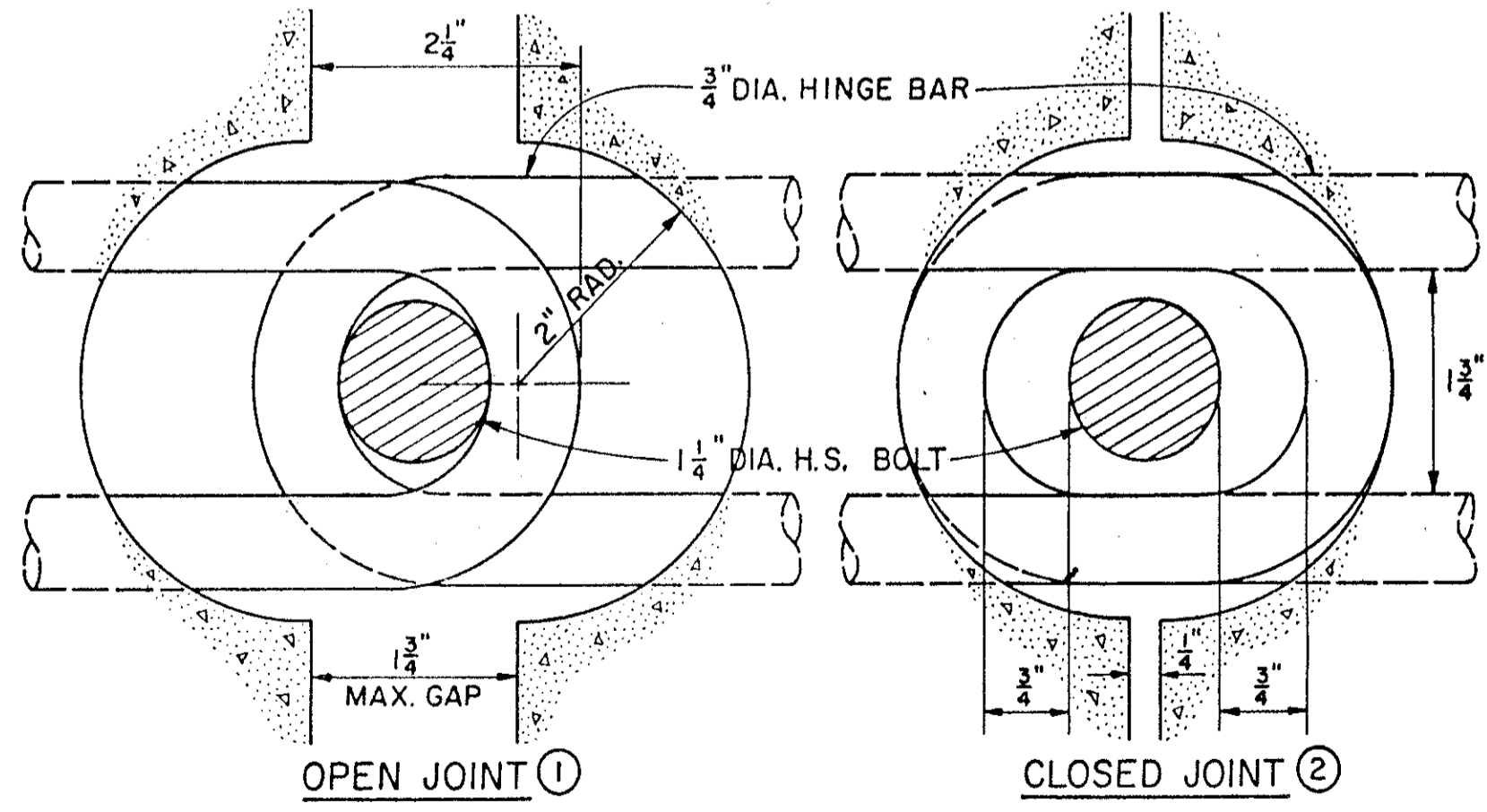
EXISTING BRIDGE MOUNTED BARRIER DETAILS



DETAIL AT HINGED CONNECTION

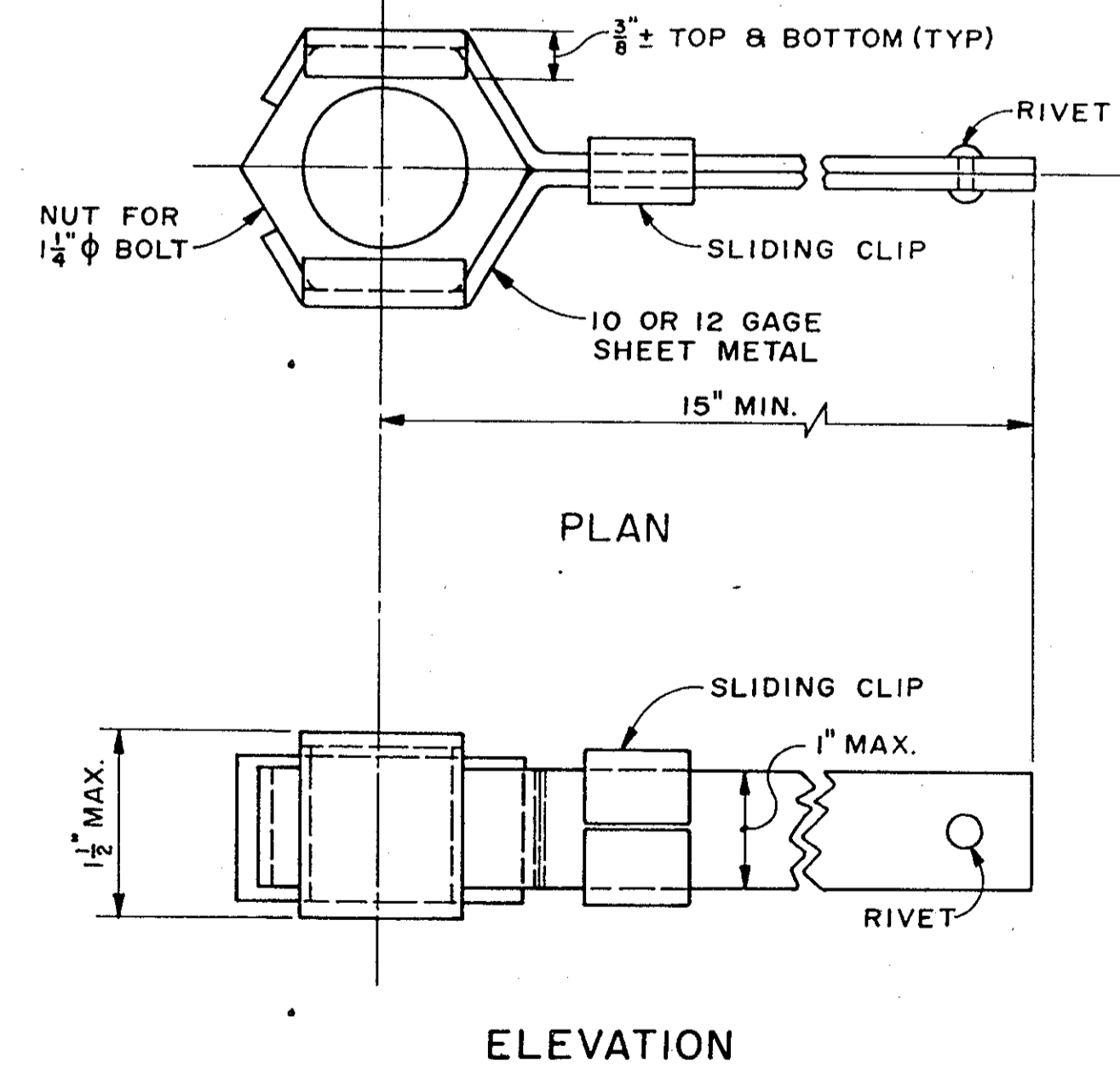
PROPOSED BARRIER DETAILS

PROPOSED BARRIER DETAILS



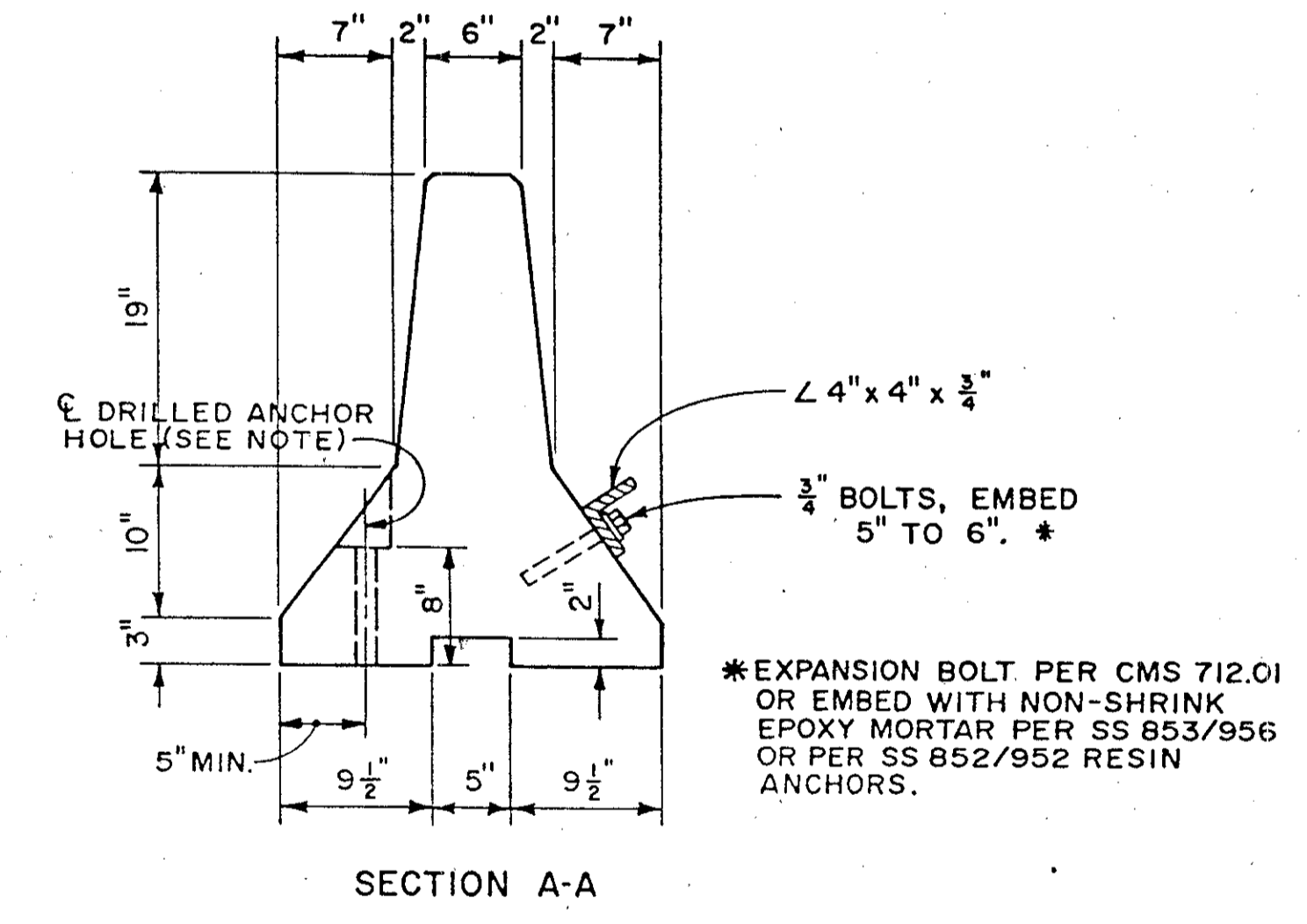
- JOINT CONNECTION DETAILS**
- ① BARRIER JOINTS MUST BE FULLY OPEN BEFORE NUT IS TIGHTENED
 - ② BARRIERS SHOULD INITIALLY BE PLACED CLOSER TOGETHER SO THAT BOLTS CAN BE EASILY INSERTED THROUGH HINGE BAR LOOPS.

TYPICAL BARRIER DETAILS



ELEVATION

SHEET METAL NUT RETAINER
SUGGESTED FOR USE IN EXISTING BRIDGE MOUNTED BARRIER



SECTION A-A

NOTE: IN ORDER TO ANCHOR THE EXISTING BRIDGE MOUNTED BARRIER TO THE BRIDGE DECK, WHERE ANCHORING IS REQUIRED, 1-1/4" MIN. DIAMETER HOLES MUST BE DRILLED THROUGH THE BARRIER TOE AT THE LOCATION SHOWN IN THE ABOVE SECTION. GREAT CARE MUST BE USED IN DRILLING AND INSTALLING THE BARRIER SEGMENTS, AS ANY DAMAGE TO THEM WILL BE CONSIDERED CAUSE FOR THEIR REJECTION.

* EXPANSION BOLT PER CMS 712.01 OR EMBED WITH NON-SHRINK EPOXY MORTAR PER SS 853/956 OR PER SS 852/952 RESIN ANCHORS.

ALL ANCHORS SHALL BE 1" DIAMETER, HIGH STRENGTH, THRU BOLTS OR APPROVED RESIN ANCHORS. WHEN RESIN ANCHORS ARE USED, THEY MUST BE EMBEDDED A MINIMUM OF 6" INTO FIRM CONCRETE.

EXISTING BRIDGE MOUNTED BARRIER DETAILS

- BRIDGE DECK SURFACE PREPARATION**
- A. THE BRIDGE DECK SURFACE AREA ON WHICH THE PRECAST CONCRETE BARRIERS WILL REST SHALL BE CLEARED OF ALL LOOSE SAND, GRAVEL, DIRT AND DEBRIS.
 - B. ANY IRREGULARITIES IN THE BRIDGE DECK AREA, UNLESS JUDGED BY THE ENGINEER TO BE INCONSEQUENTIAL, SHALL BE LEVELED WITH GROUT AND/OR ASPHALT.
 - C. ASPHALT ROLL ROOFING SHALL BE PLACED ON THOSE BRIDGE DECK AREAS, AS JUDGED BY THE ENGINEER, TO HAVE A SURFACE ROUGHNESS WHICH WOULD INHIBIT FRICTION CONTACT BETWEEN BARRIER SEGMENTS AND DECK.

BRIDGE DECK SURFACE PREPARATION