
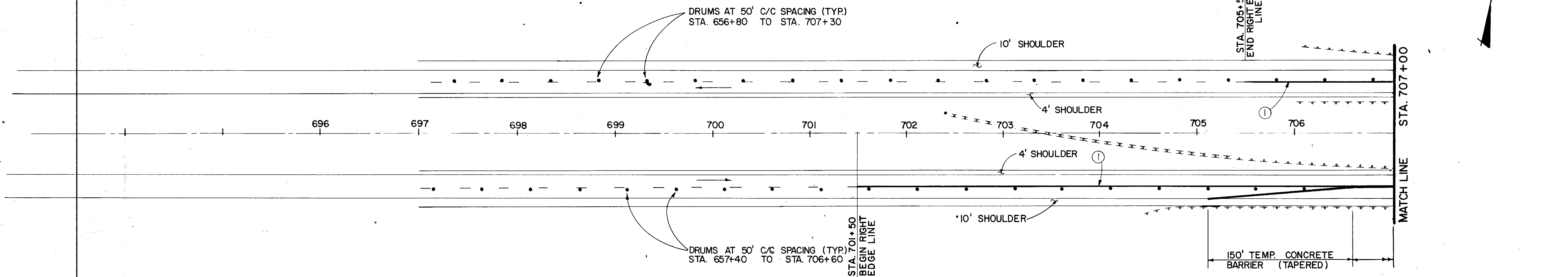
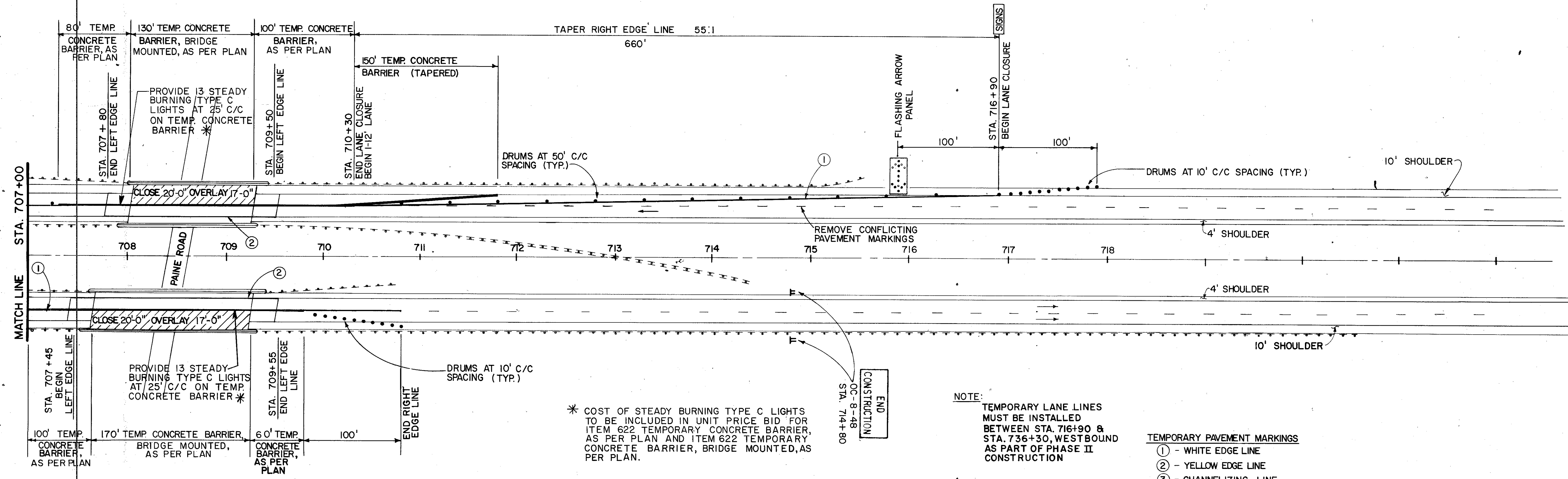
 OW-SPEC-48  
 OW-143-24  
 WESTBOUND AT STA. 698+00 R&L  
 STA. 686+00 R&L



FOR ADVANCED WARNING SIGNS  
SEE SHEET No. 79



\* COST OF STEADY BURNING TYPE C LIGHTS TO BE INCLUDED IN UNIT PRICE BID FOR ITEM 622 TEMPORARY CONCRETE BARRIER, AS PER PLAN AND ITEM 622 TEMPORARY CONCRETE BARRIER, BRIDGE MOUNTED, AS PER PLAN.

NOTE:  
TEMPORARY LANE LINES MUST BE INSTALLED BETWEEN STA. 716+90 & STA. 736+30, WESTBOUND AS PART OF PHASE II CONSTRUCTION

- TEMPORARY PAVEMENT MARKINGS
- ① - WHITE EDGE LINE
  - ② - YELLOW EDGE LINE
  - ③ - CHANNELIZING LINE

LAK-90-21.10L&R