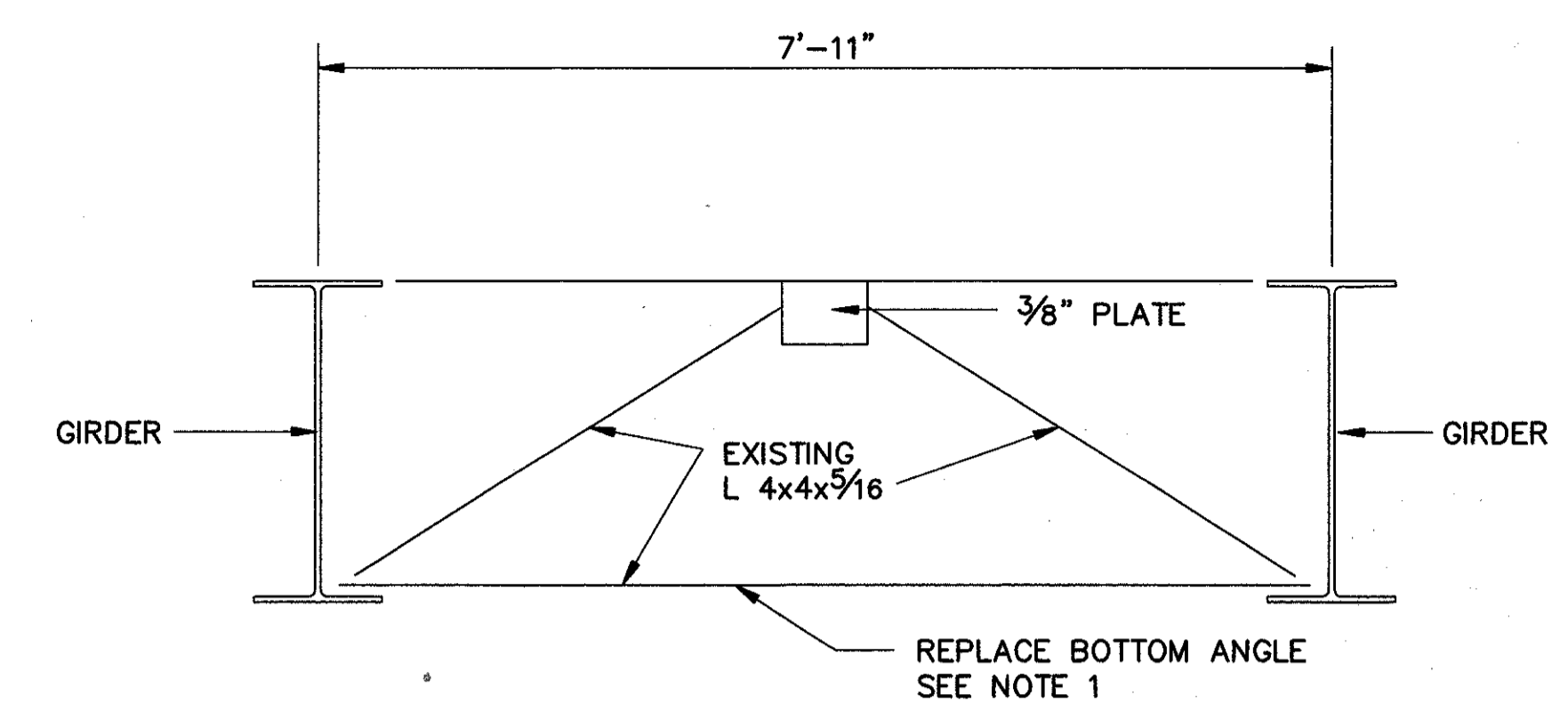
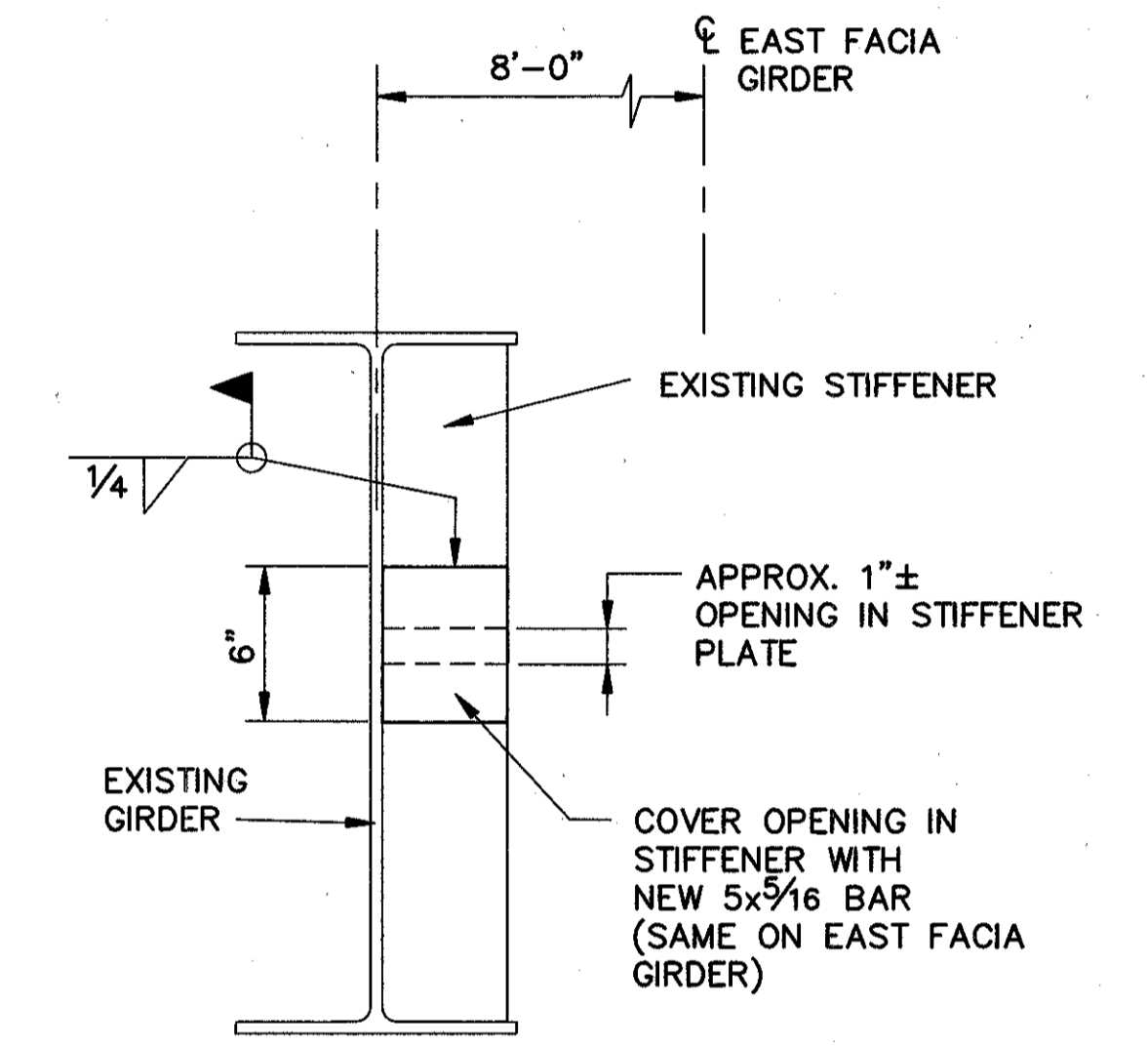


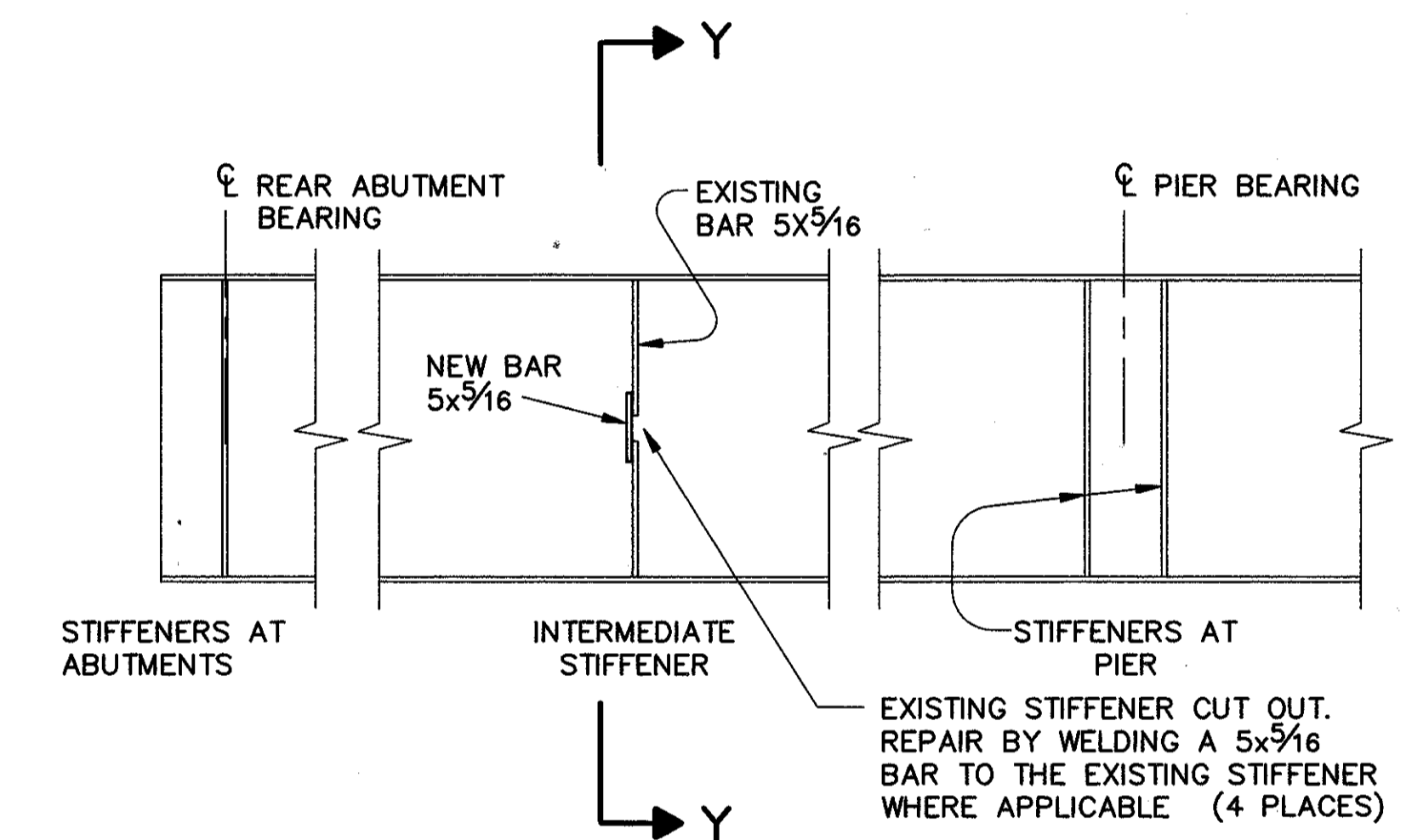
END CROSSFRAME DETAIL "A"
SEE NOTE 2



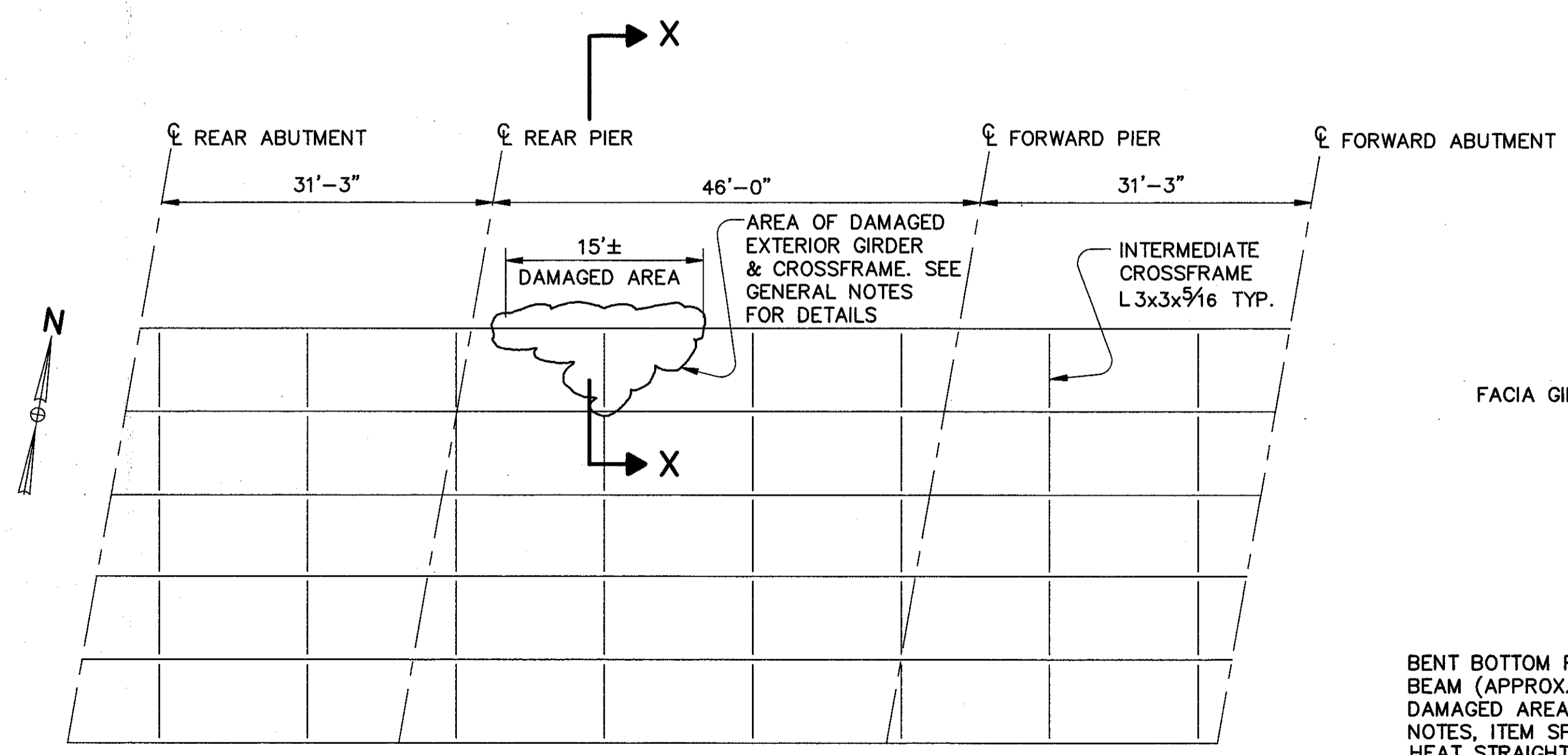
END CROSSFRAME DETAIL "B"
LAK-90-1641L/R



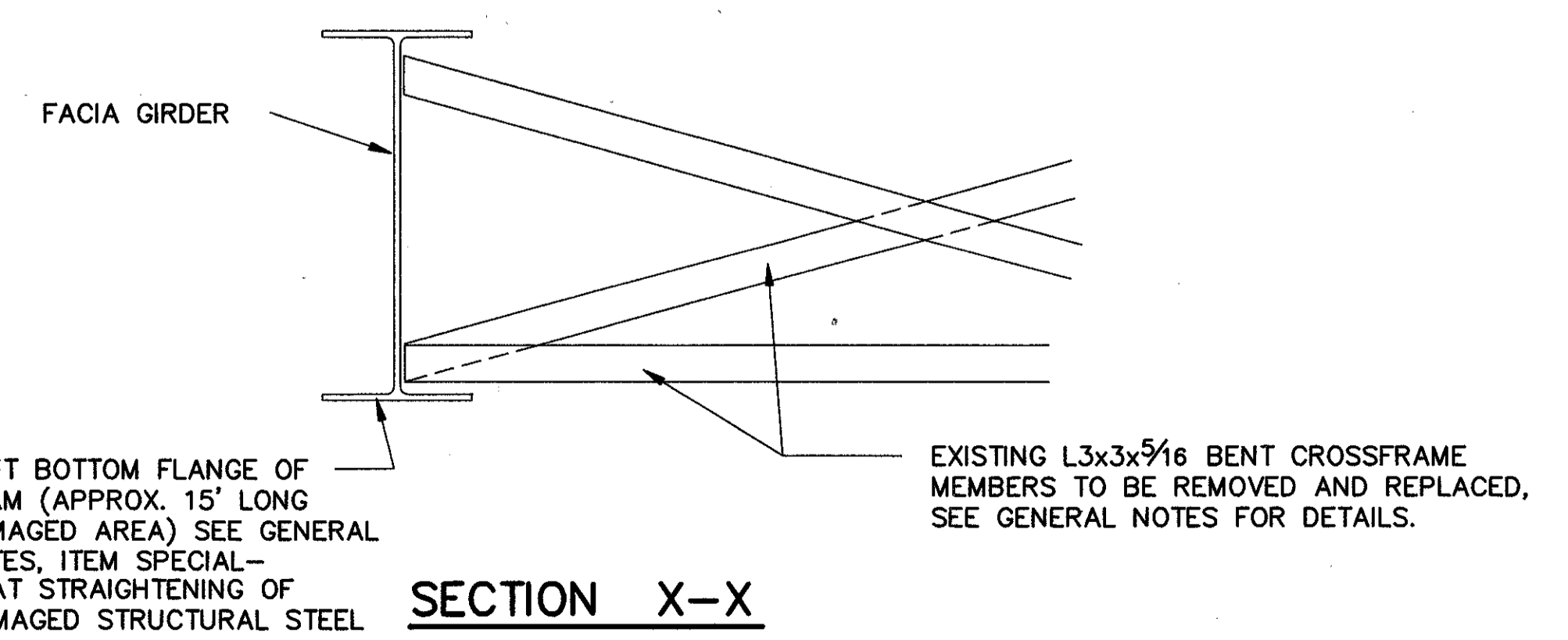
SECTION Y-Y



GIRDER STIFFENER PLATE MODIFICATION
LAK-90-1297



STRUCTURAL STEEL FRAMING MODIFICATION
LAK-90-2110L



SECTION X-X

NOTES:

1. FIELD WELD NEW ANGLE TO EXISTING GIRDER AND GUSSET PLATES WITH 1/4" CONTINUOUS FILLET WELD. EXISTING STEEL SHALL BE CLEANED OF ALL RUST AND PAINT AS REQUIRED TO PROVIDE ADEQUATE WELD SURFACE AREA.
2. CONTRACTOR SHALL FIELD MEASURE EXISTING CROSSFRAME ANGLES TO DETERMINE EXACT LENGTHS OF ANGLE NEEDED FOR REPLACEMENT AS CALLED FOR ON THE DRAWINGS.
3. FOR LOCATIONS OF CROSSFRAMES TO BE REPAIRED SEE SHEETS [32/37], [33/37] AND [34/37].
4. NOTATION: TYP.-TYPICAL, APPROX.-APPROXIMATELY.

COLPETZER-THOMAS, INC. AN ENGINEERING GROUP <small>WILLOUGHBY • MENTOR • NORTH CANTON • STEUBENVILLE • LORAIN</small>		37 / 37				
MISCELLANEOUS DETAILS						
DESIGNED	DRAWN	TRACED	CHECKED	REVIEWED	DATE	REVISED
J.E.A.	R.L.B.	H.P.	R.J.C.	B.J.A.	11/2/87	