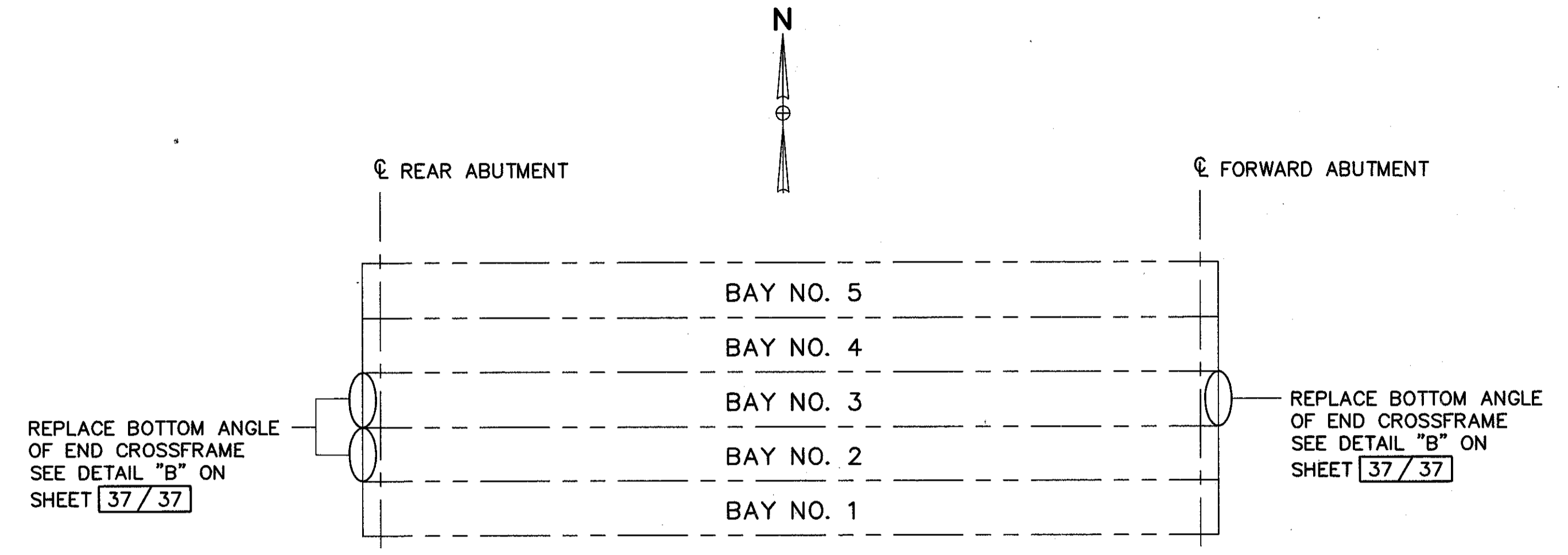
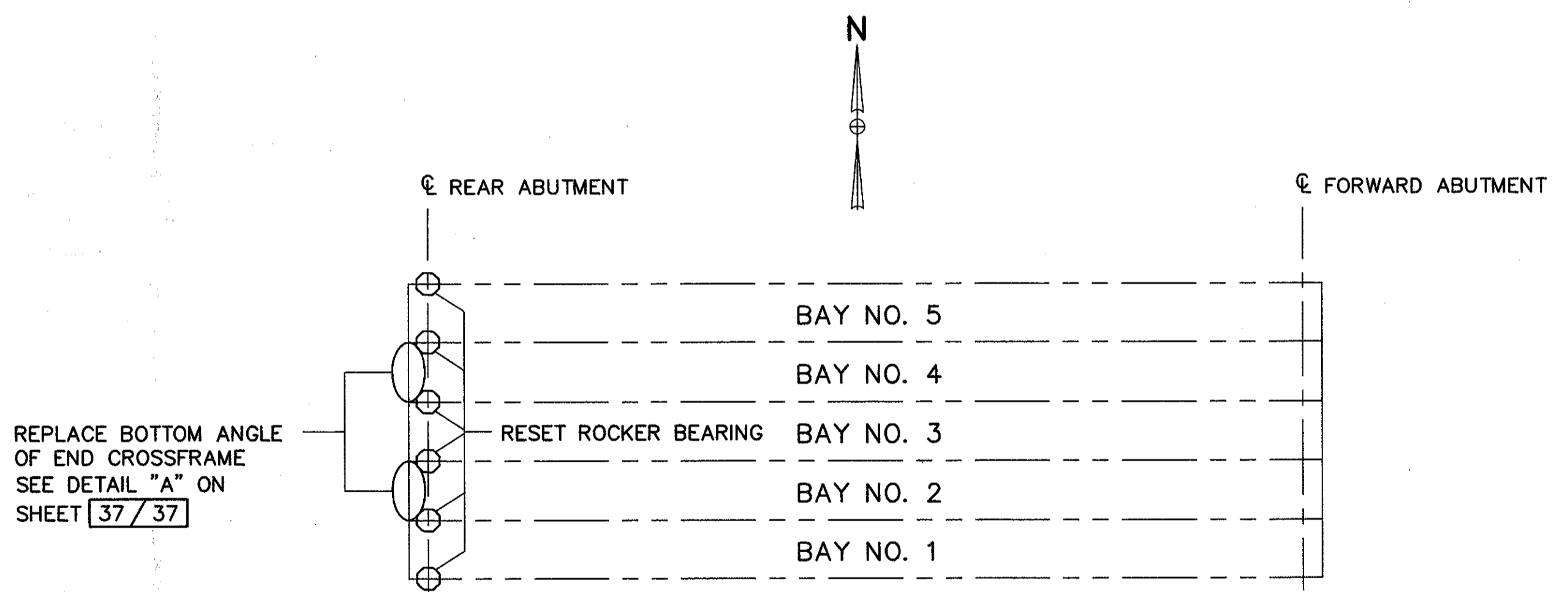


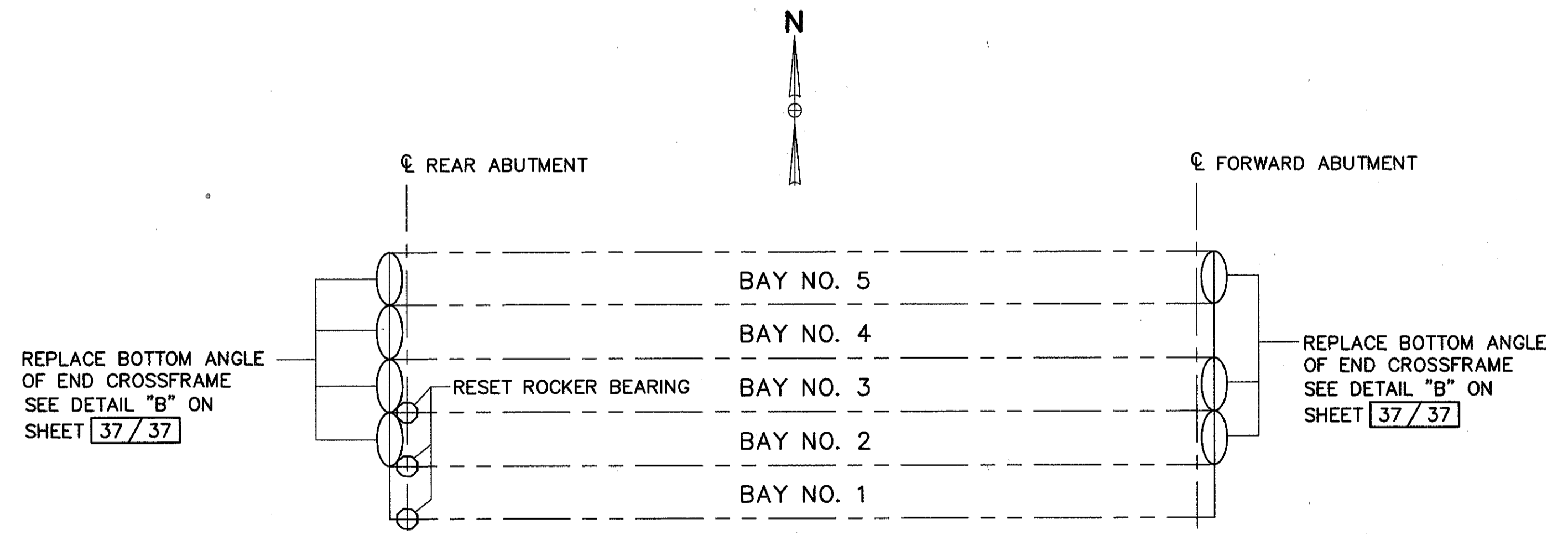
**SCHEMATIC PLAN**  
BRIDGE NO. LAK-90-2003L



**SCHEMATIC PLAN**  
BRIDGE NO. LAK-90-1641L



**SCHEMATIC PLAN**  
BRIDGE NO. LAK-90-2003R



**SCHEMATIC PLAN**  
BRIDGE NO. LAK-90-1641R

**ADDITIONAL BEARINGS TO BE RESET**

LAK-90-0877	4 AT EACH ABUTMENT , 4 AT PIER NO. 5 (MOST NORTHERLY PIER)
LAK-90-1921	4 AT FORWARD ABUTMENT
LAK-90-2210	1 AT REAR ABUTMENT UNDER EAST GIRDER
LAK-90-2920	4 AT EACH ABUTMENT

**NOTES:**

REFER TO SHEET 35/37 FOR DETAILS OF RESETTING BEARINGS AND SHEET 32/37 FOR PROCEDURE NOTES APPLICABLE TO THESE STRUCTURES.

REFER TO SHEET 37/37 FOR DETAILS OF REPLACING END CROSSFRAME MEMBERS

<b>CT COLPETZER-THOMAS, INC.</b> AN ENGINEERING GROUP		34/37
WILLOUGHBY • MENTOR • NORTH CANTON • STEUBENVILLE • LORAIN		
<b>SCHEMATIC PLANS FOR RESETTING BEARINGS &amp; REPLACING END FRAMES</b>		
BRIDGE NO. LAK-90-1641L/1641R		
BRIDGE NO. LAK-90-2003L/2003R		
DESIGNED	DRAWN	TRACED
REVIEWED	DATE	REVISED
R.J.C.	R.L.B.	H.P.
J.E.A.	B.J.A.	11/2/87