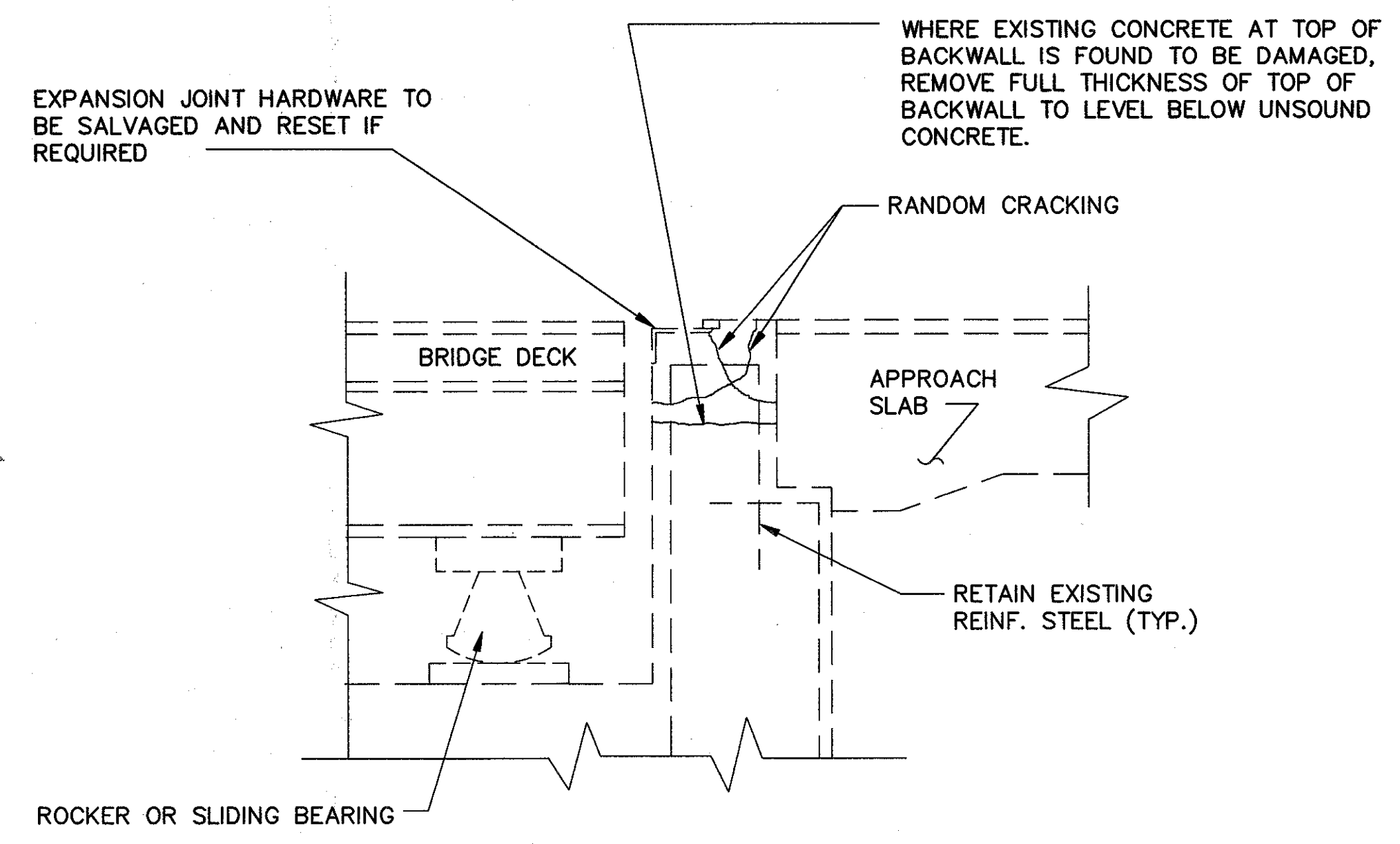
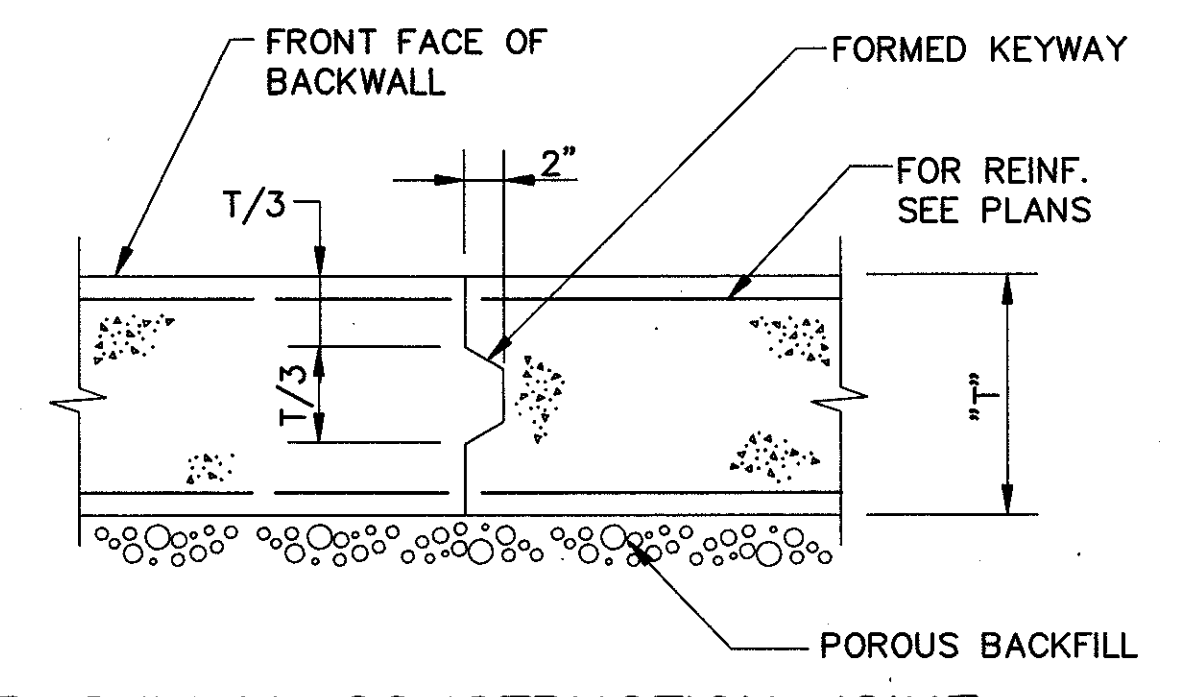


LAK-90-8.77/29.20



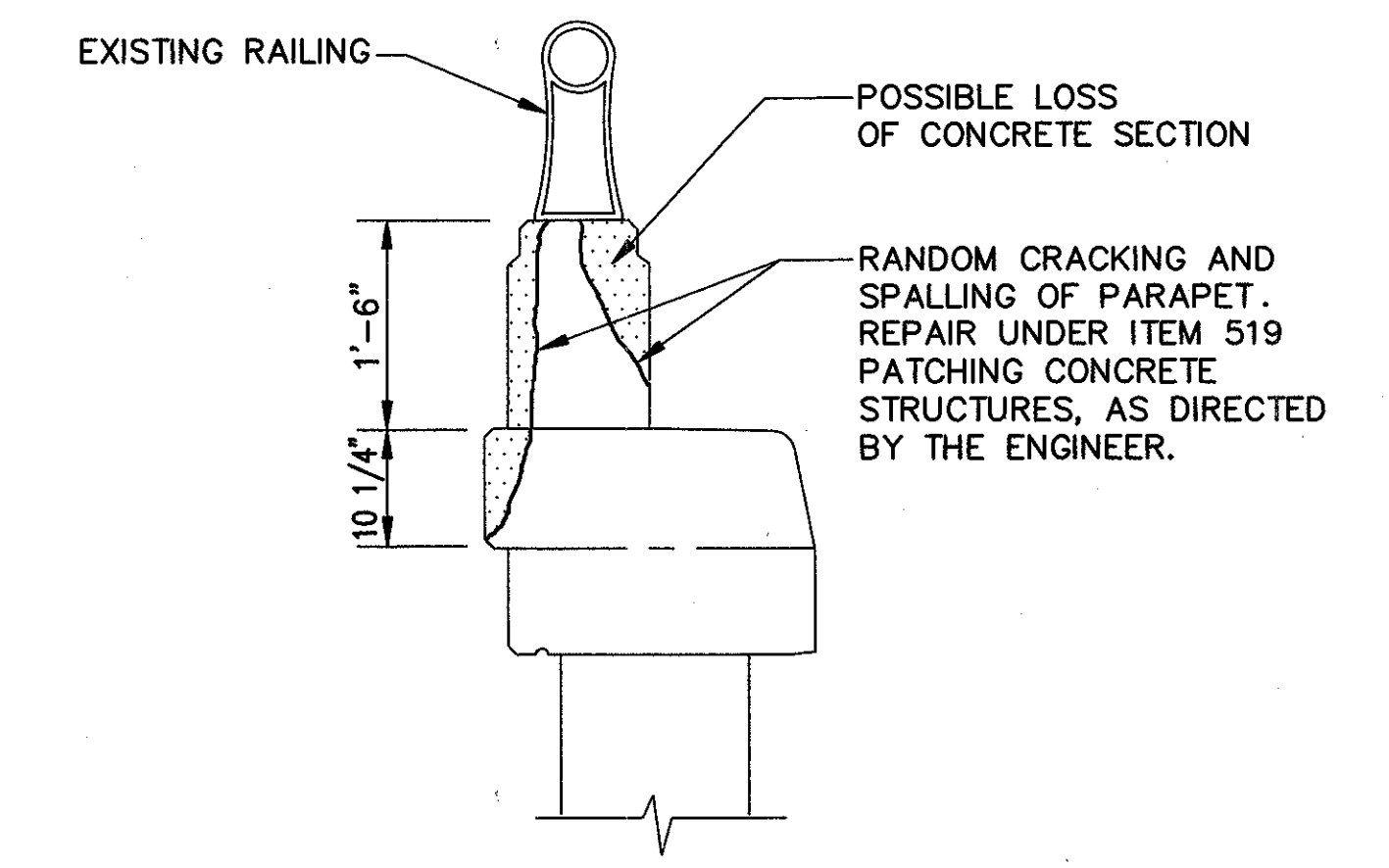
EXISTING BACKWALL

LAK-90-0877 REAR ABUTMENT
 LAK-90-1297 FORWARD ABUTMENT
 LAK-90-2003 REAR ABUTMENT

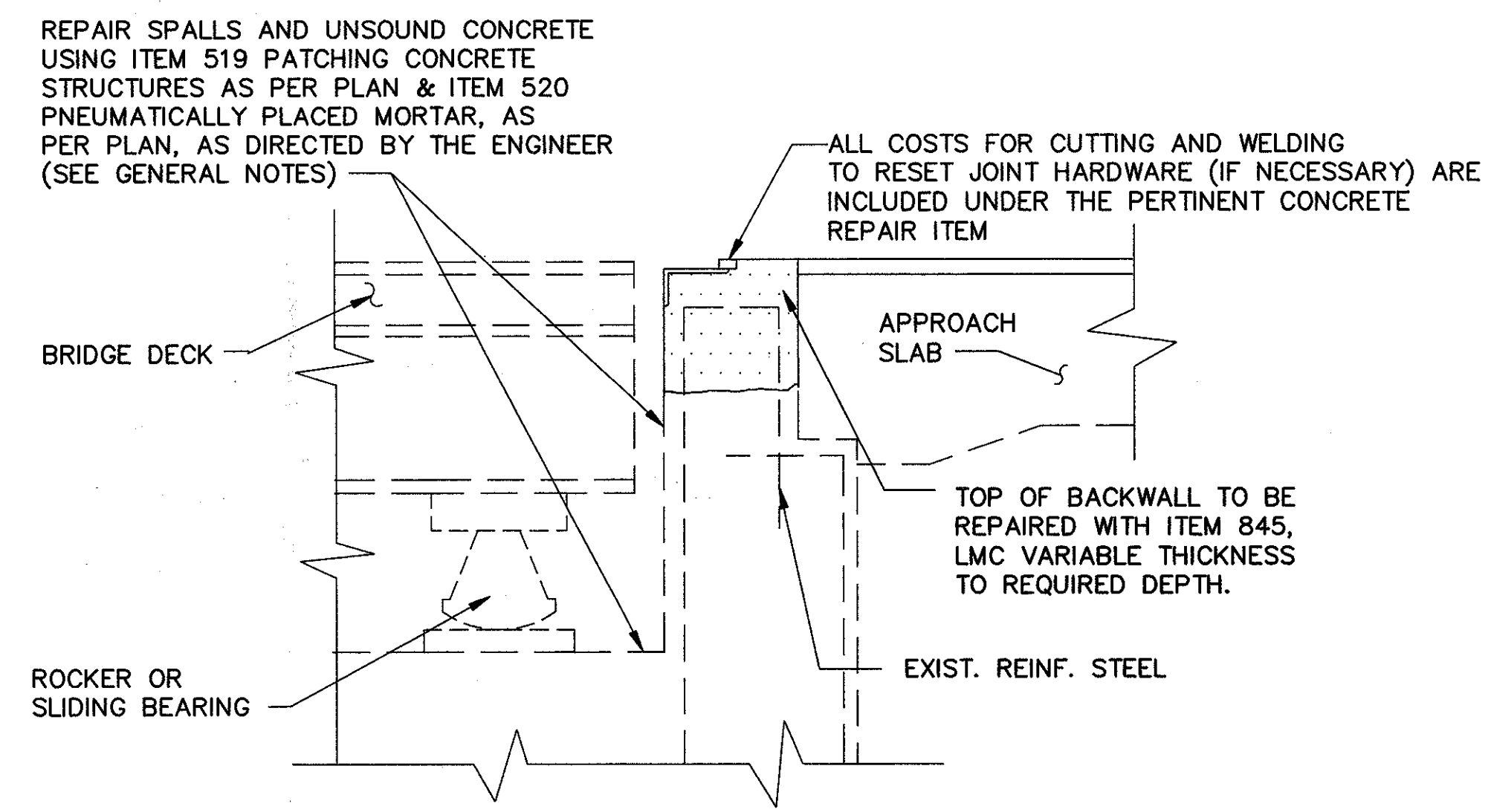


BACKWALL CONSTRUCTION JOINT

LAK-90-1487L (FORWARD & REAR)
 LAK-90-1487R INCLUDING RAMP "D" (FORWARD & REAR)
 LAK-90-1641R (FORWARD)

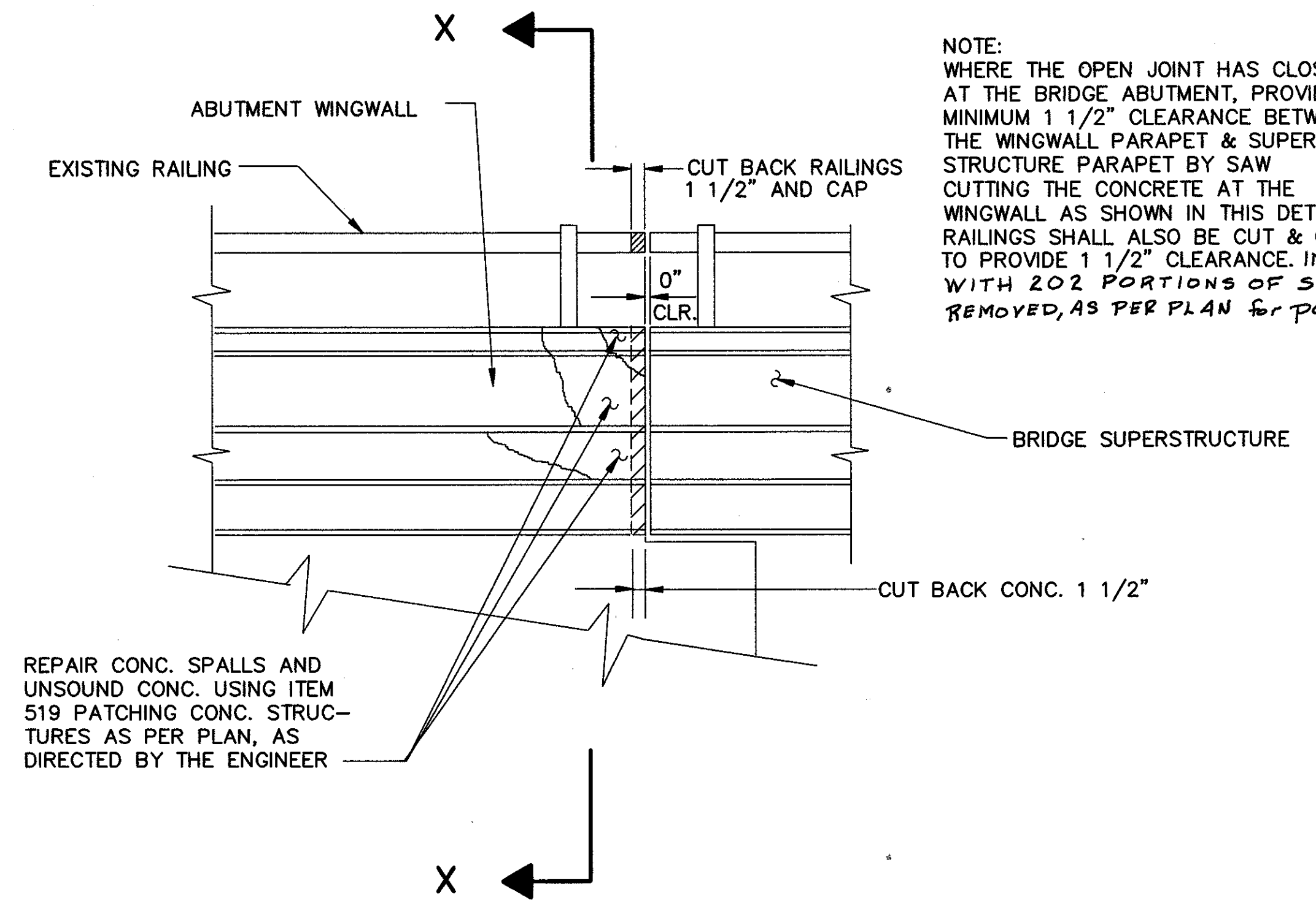


SECTION X-X



PROPOSED BACKWALL REPAIR

LAK-90-0877 REAR ABUTMENT
 LAK-90-1297 FORWARD ABUTMENT
 LAK-90-2003 REAR ABUTMENT



NOTE: WHERE THE OPEN JOINT HAS CLOSED AT THE BRIDGE ABUTMENT, PROVIDE MINIMUM 1 1/2" CLEARANCE BETWEEN THE WINGWALL PARAPET & SUPERSTRUCTURE PARAPET BY SAW CUTTING THE CONCRETE AT THE WINGWALL AS SHOWN IN THIS DETAIL. RAILINGS SHALL ALSO BE CUT & CAPPED TO PROVIDE 1 1/2" CLEARANCE. INCLUDE WITH 202 PORTIONS OF STRUCTURES REMOVED, AS PER PLAN for payment.

NOTATION: EXIST.-EXISTING, CONST.-CONSTRUCTION, L.M.C.-LATEX MODIFIED CONCRETE, REINF.-REINFORCING, TYP.-TYPICAL, CLR-CLEAR, CONC.-CONCRETE

EXISTING OPEN JOINT MODIFICATION AT WINGWALL AND SUPERSTRUCTURE

LAK-90-2920
 LAK-90-1487

MISCELLANEOUS DETAILS

DESIGNED	DRAWN	TRACED	CHECKED	REVIEWED	DATE	REVISED
HBM	JLJ	JLJ	RJC	BJA	11/2/87	