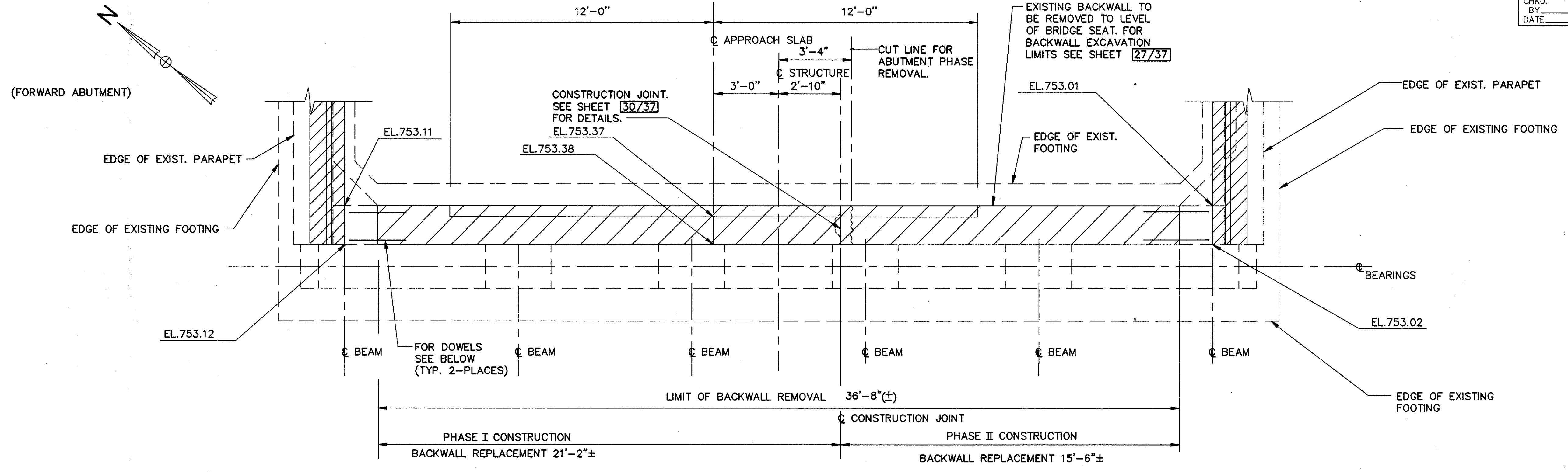
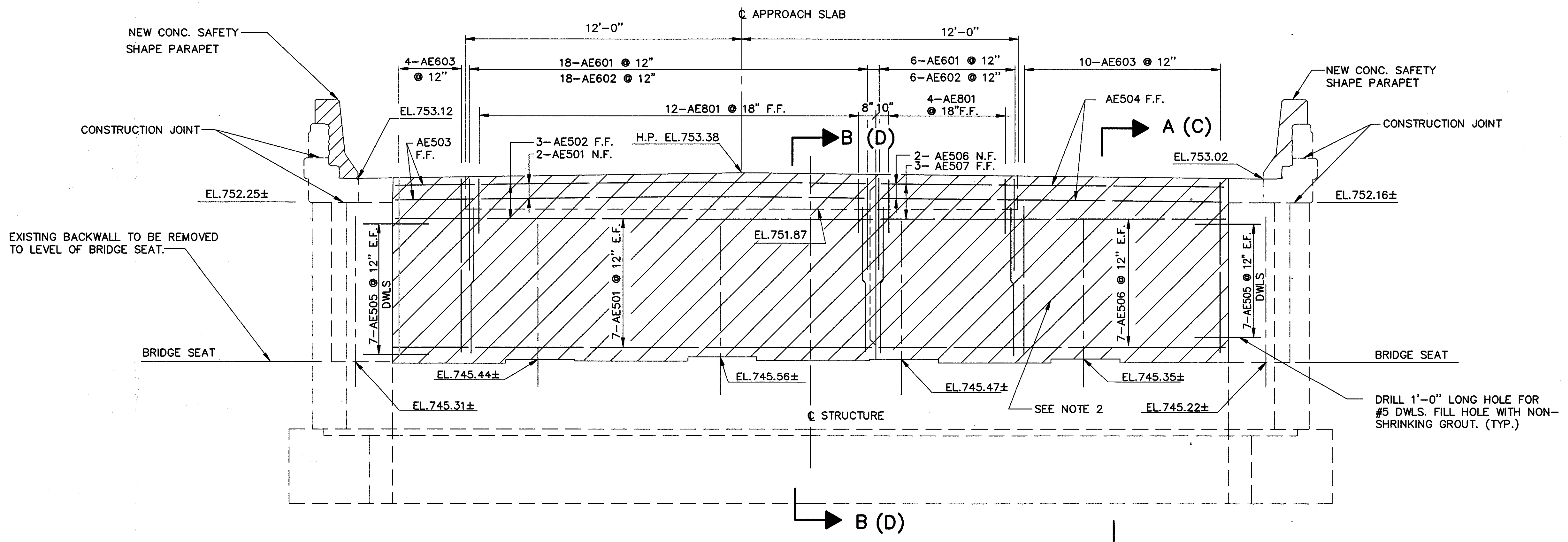


LAK-90-8.77/29.20



PLAN - FORWARD ABUTMENT

LAK-90-1641R



ELEVATION - FORWARD ABUTMENT

LAK-90-1641R

- NOTES:
- ELEVATIONS INDICATED AS BEING APPROXIMATE (±) ARE FROM ORIGINAL DESIGN DRAWINGS. THEY ARE PROVIDED FOR INFORMATION ONLY AND ACTUAL FIELD CONDITIONS SHOULD BE EXPECTED TO DEVIATE DUE TO SETTLEMENT. ELEVATIONS NOT MARKED W/± ARE FROM FIELD MEASUREMENTS.
 - EXTENT OF CONCRETE REMOVAL AND REPLACEMENT INDICATED ON ELEVATION APPLIES ONLY TO THE RIGHT BRIDGE FORWARD ABUTMENT. THE RIGHT BRIDGE REAR ABUTMENT AND BOTH ABUTMENTS AT THE LEFT BRIDGE SHALL BE REPAIRED AS SHOWN IN SECTIONS "C-C" AND "D-D", SHEET 27/37.
 - ALL BARS SHALL BE EPOXY COATED.
 - FOR REPAIR OF APPROACH SLAB AT RIGHT BRIDGE FORWARD ABUTMENT, SEE "EXIST. APPROACH SLAB REMOVAL LIMITS" AND "PARTIAL APPROACH SLAB REPLACEMENT" IN HIGHWAY DRAWINGS.
 - SEE HIGHWAY DRAWINGS FOR PHASE CONSTRUCTION LIMITS.
 - FOR SECTIONS SEE SHEET 27/37
 - NOTATION: E.F.-EACH FACE, F.F.-FAR FACE, N.F.-NEAR FACE, TYP.-TYPICAL, EL.-ELEVATION, EXIST.-EXISTING, DWLS.-DOWELS.

NOTE: SECTION MARKS INDICATED IN PARENTHESES ARE FOR LAK-90-1641R REAR & LAK-90-1641L FORWARD & REAR.

COLPETZER-THOMAS, INC. AN ENGINEERING GROUP WILLOUGHBY • MENTOR • NORTH CANTON • STEUBENVILLE • LORAIN						26 / 37
PLAN AND ELEVATION FORWARD ABUTMENT BACKWALL BIG CREEK LAK-90-1641L & 1641 R						
DESIGNED	DRAWN	TRACED	CHECKED	REVIEWED	DATE	REVISED
H.B.M.	J.L.J.	J.L.J.	R.J.C.	B.J.A.	11/2/87	