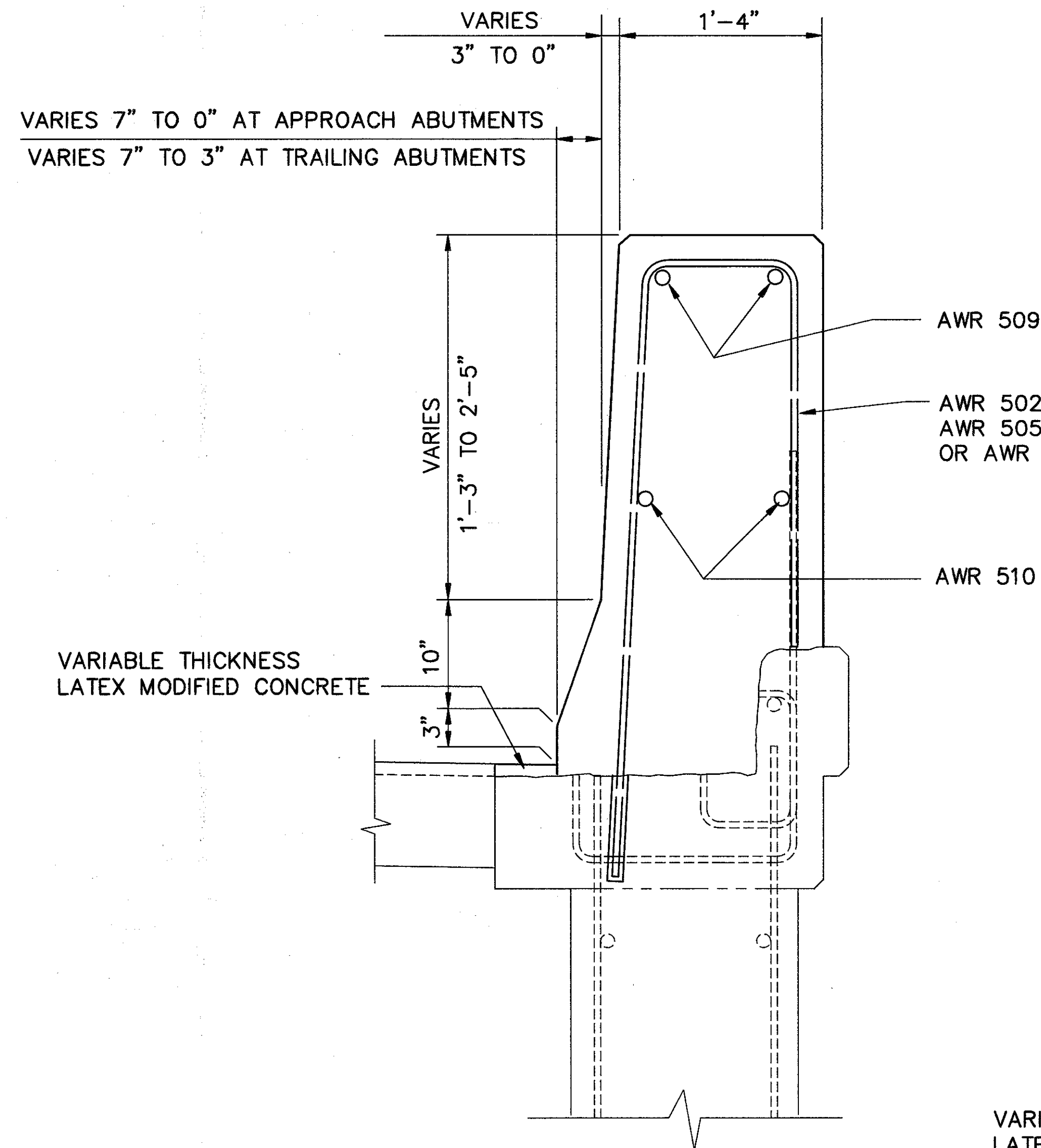
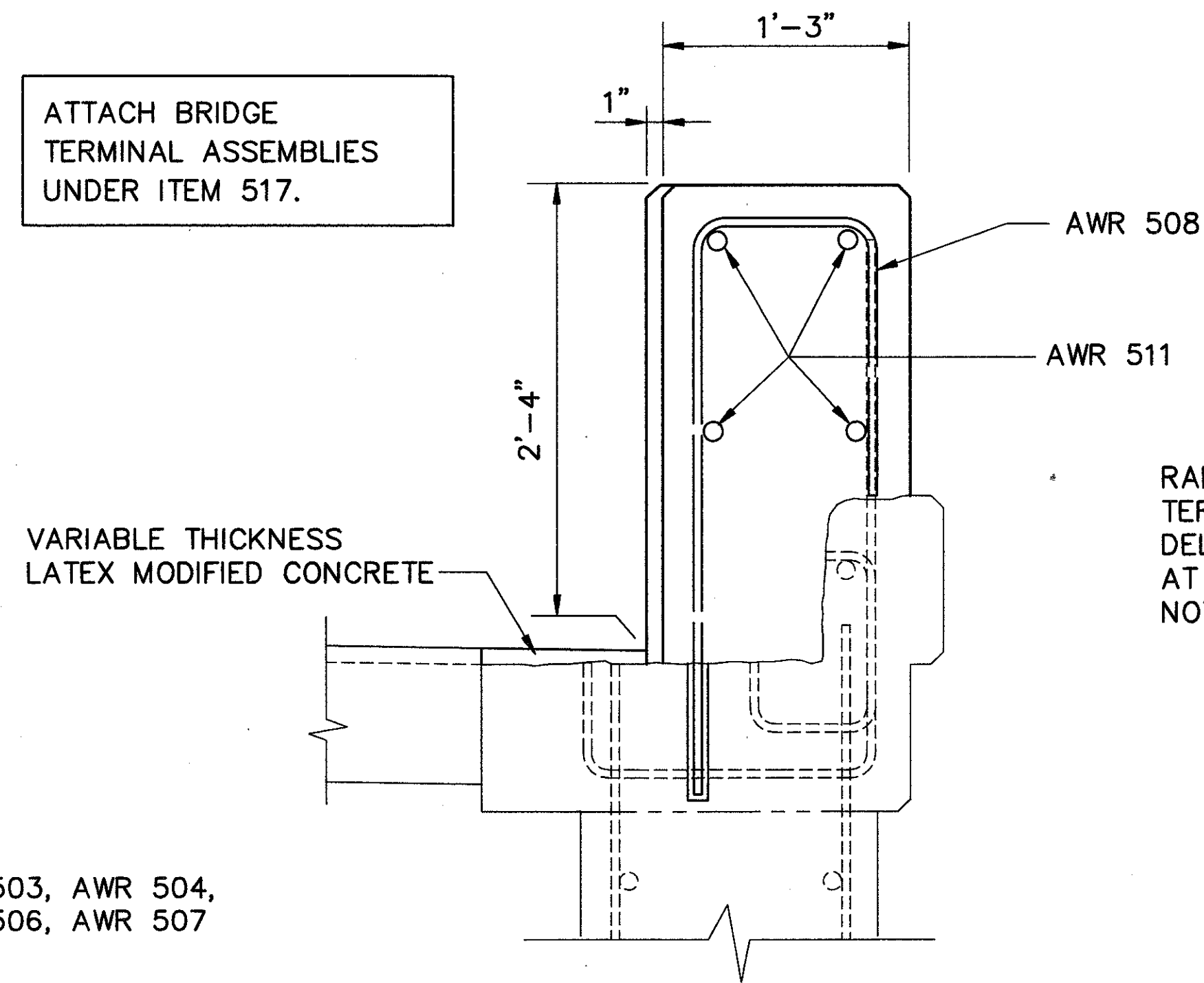


TRANSITION HEIGHT FROM 42 INCHES TO 28 INCHES IN 6'-0". FOR TRANSITION LOCATION AND ADDITIONAL DETAILS SEE BR-1. MAINTAIN CONSTANT 1'-4" TOP WIDTH FOR 6'-0" TRANSITION.

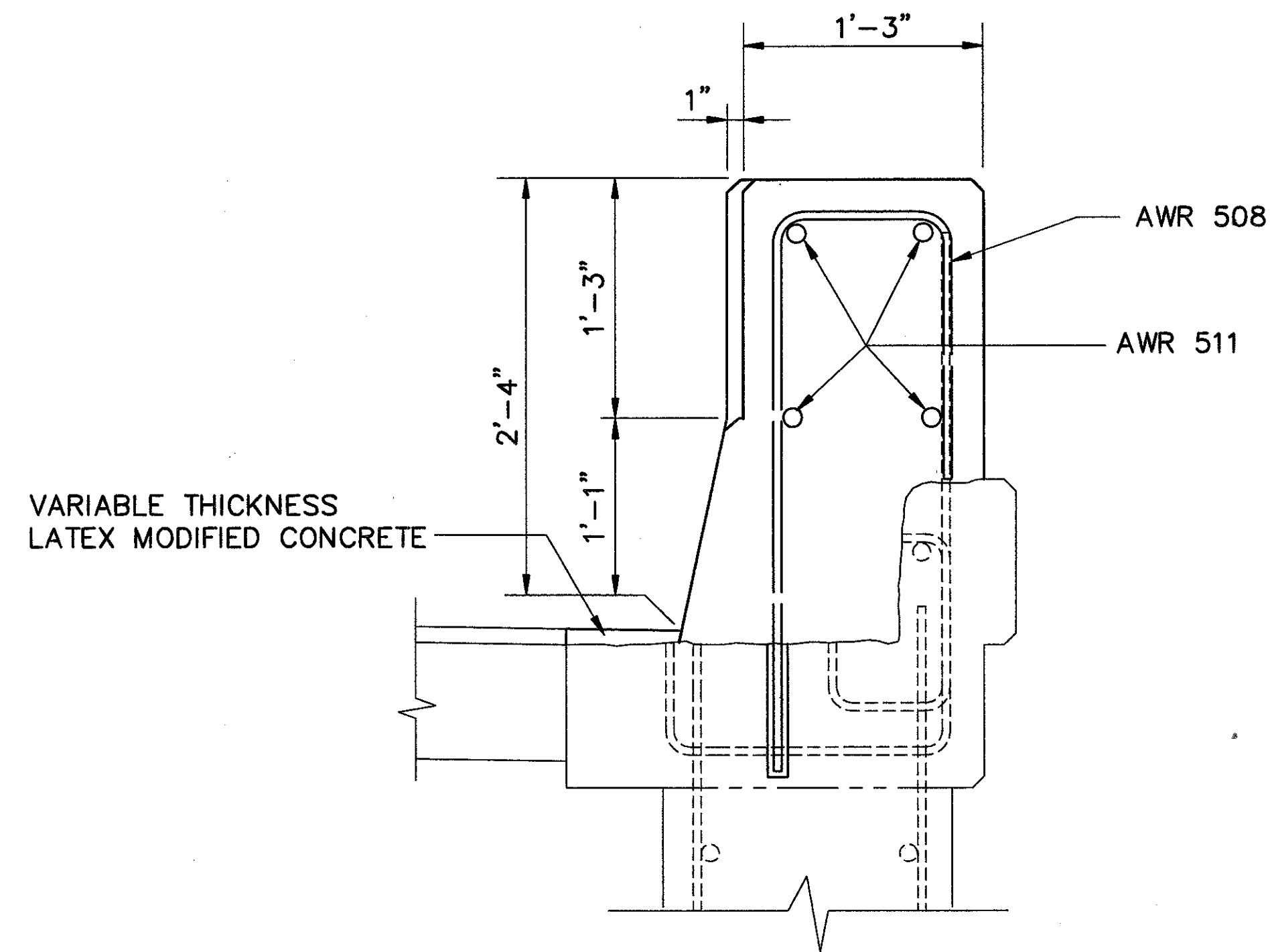


SECTION B-B
MODIFIED TYPICAL WINGWALL
TRANSITION SECTION

ATTACH BRIDGE
TERMINAL ASSEMBLIES
UNDER ITEM 517.

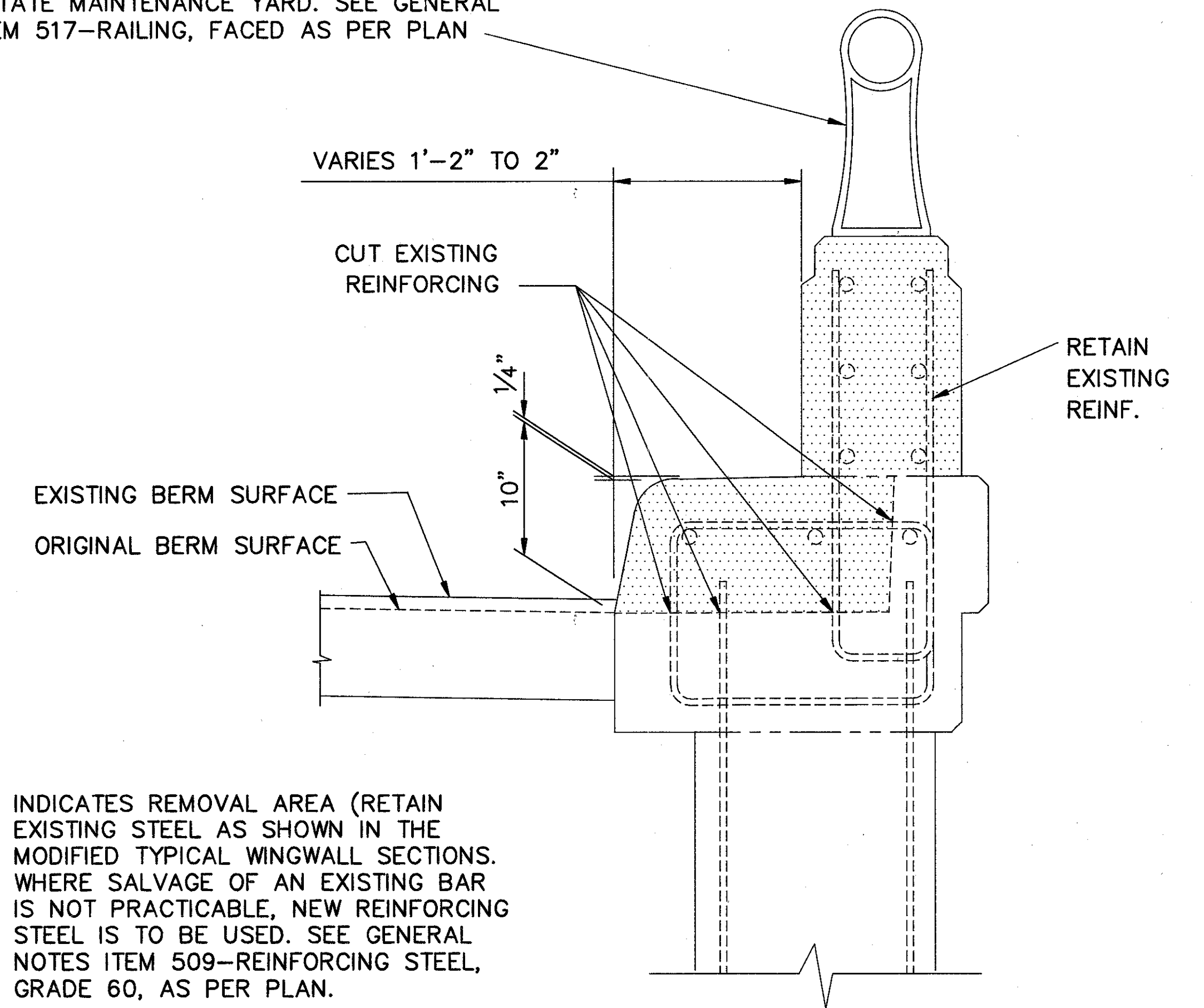


SECTION C-C
MODIFIED TYPICAL WINGWALL
END SECTION AT APPROACH ABUTMENTS



SECTION D-D
MODIFIED TYPICAL WINGWALL
END SECTION AT TRAILING ABUTMENTS

RAILINGS AND POSTS SHALL BE REMOVED. CURVED TERMINAL PIECES WITH END PLATES ARE TO BE DELIVERED AND UNLOADED AT A DESIGNATED AREA AT THE STATE MAINTENANCE YARD. SEE GENERAL NOTES ITEM 517-RAILING, FACED AS PER PLAN



EXISTING TYPICAL WINGWALL
AT 'B-B', 'C-C' & 'D-D'

INDICATES REMOVAL AREA (RETAIN EXISTING STEEL AS SHOWN IN THE MODIFIED TYPICAL WINGWALL SECTIONS. WHERE SALVAGE OF AN EXISTING BAR IS NOT PRACTICABLE, NEW REINFORCING STEEL IS TO BE USED. SEE GENERAL NOTES ITEM 509-REINFORCING STEEL, GRADE 60, AS PER PLAN.

NOTE: APPROACH ABUTMENTS ARE THE REAR ABUTMENTS ON THE RIGHT BRIDGES AND THE FORWARD ABUTMENTS ON THE LEFT BRIDGES.

TRAILING ABUTMENTS ARE THE FORWARD ABUTMENTS ON THE RIGHT BRIDGES AND THE REAR ABUTMENTS ON THE LEFT BRIDGES.

FOR LOCATION OF SECTION B-B, SECTION C-C AND SECTION D-D SEE SHEET 7/37

DOWEL HOLES TO BE INCLUDED IN ITEM 517 FOR PAYMENT.

CT COLPETZER-THOMAS, INC. AN ENGINEERING GROUP		WILLOUGHBY • MENTOR • NORTH CANTON • STEUBENVILLE • LORAIN		8 / 37
WINGWALL DETAILS TRANSITION SECTIONS				
BRIDGE NO. LAK-90-1370L/1370R, 1487L/1487R, 1641L/1641R, 2003L/2003R AND 2110L/2110R				
DESIGNED	DRAWN	TRACED	CHECKED	REVIEWED DATE
J.E.A.	R.L.B.	H.P.	R.J.C.	B.J.A. 11/2/87