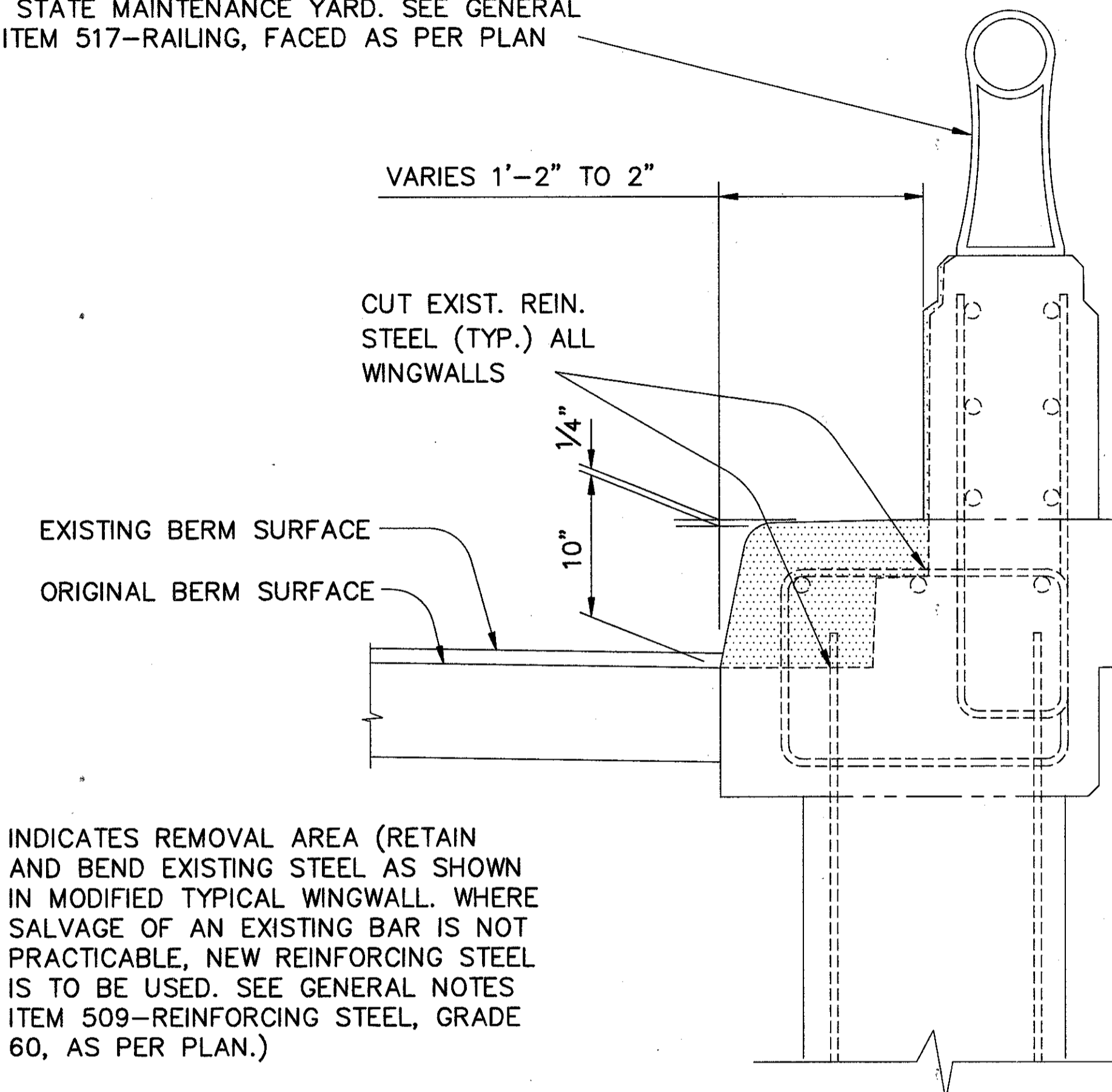


SECTION A-A

**MODIFIED TYPICAL WINGWALL
NORMAL SECTION**

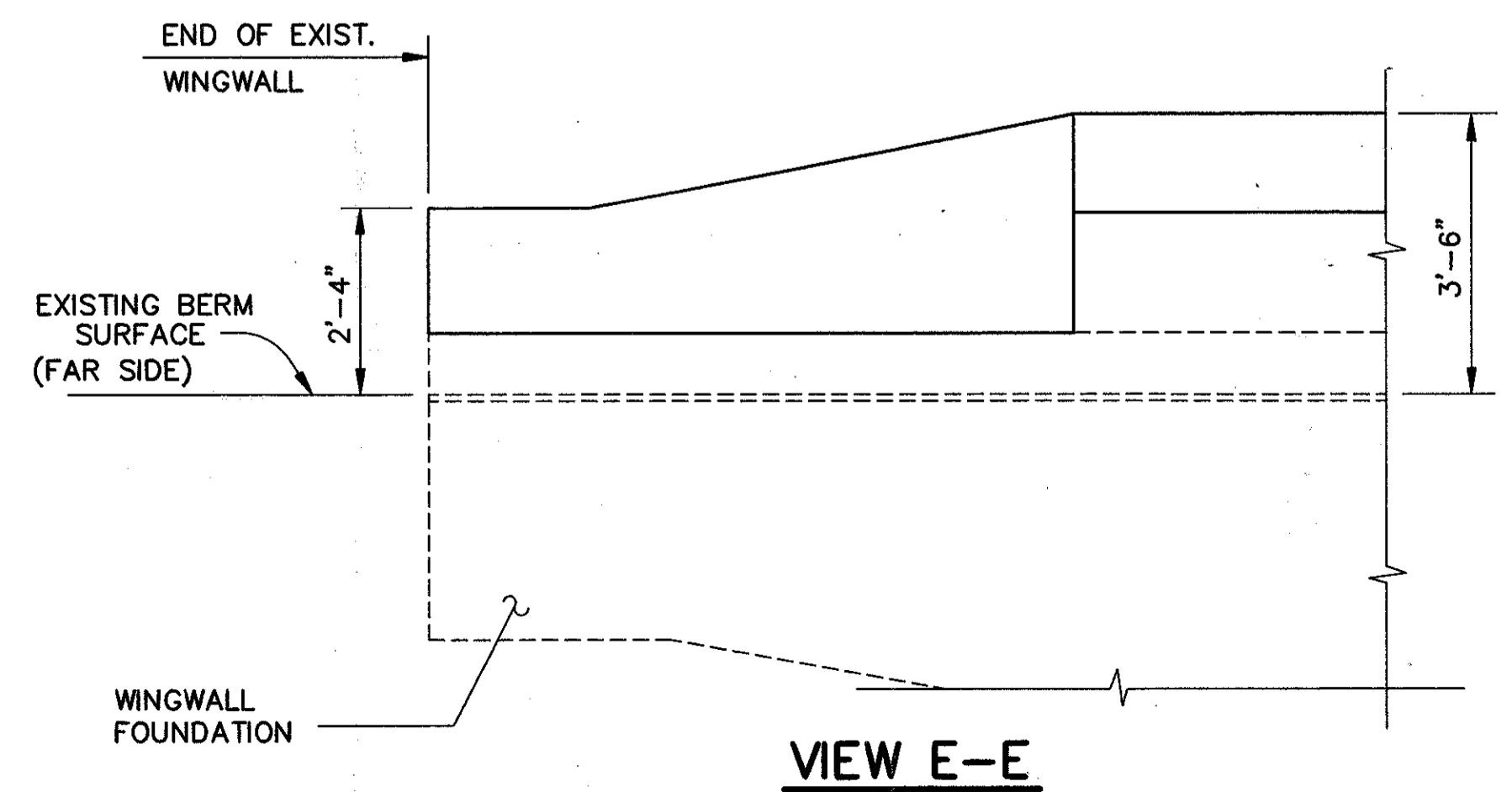
RAILINGS AND POSTS SHALL BE REMOVED. CURVED TERMINAL PIECES WITH END PLATES ARE TO BE DELIVERED AND UNLOADED AT A DESIGNATED AREA AT THE STATE MAINTENANCE YARD. SEE GENERAL NOTES ITEM 517-RAILING, FACED AS PER PLAN



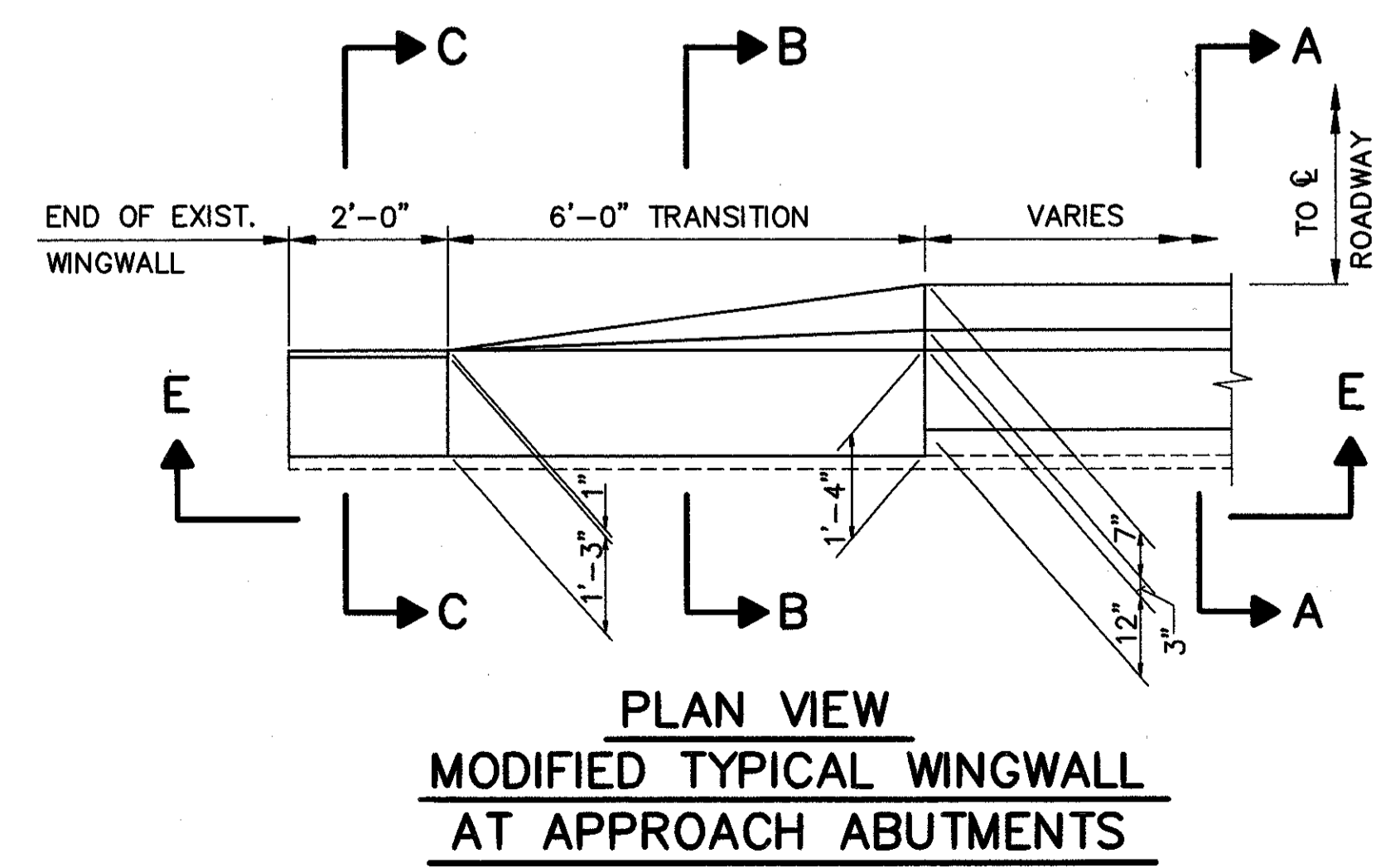
INDICATES REMOVAL AREA (RETAIN AND BEND EXISTING STEEL AS SHOWN IN MODIFIED TYPICAL WINGWALL. WHERE SALVAGE OF AN EXISTING BAR IS NOT PRACTICABLE, NEW REINFORCING STEEL IS TO BE USED. SEE GENERAL NOTES ITEM 509-REINFORCING STEEL, GRADE 60, AS PER PLAN.)

EXISTING TYPICAL WINGWALL AT 'A-A'

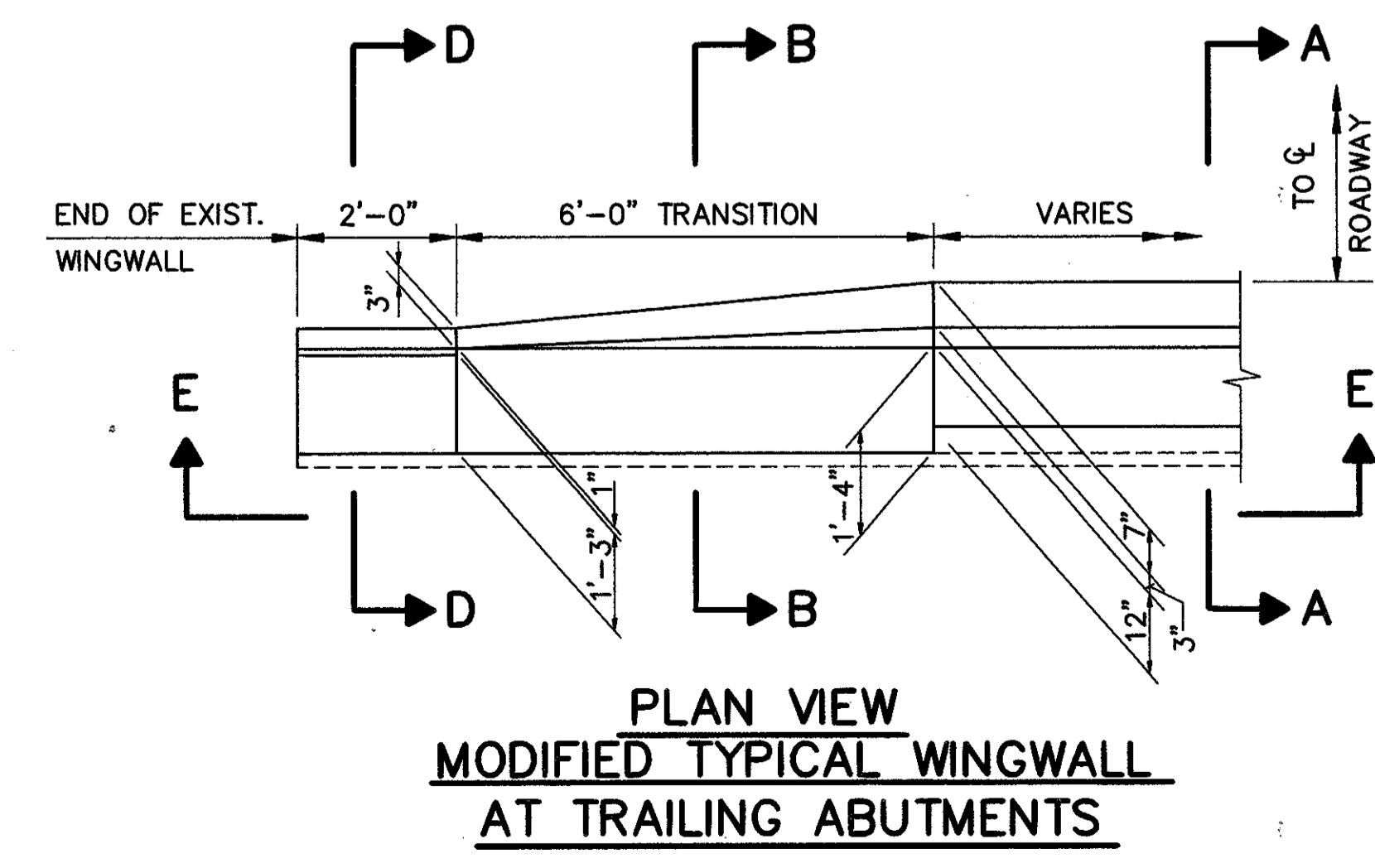
NORMAL SECTION



VIEW E-E



**PLAN VIEW
MODIFIED TYPICAL WINGWALL
AT APPROACH ABUTMENTS**



**PLAN VIEW
MODIFIED TYPICAL WINGWALL
AT TRAILING ABUTMENTS**

NOTE: APPROACH ABUTMENTS ARE THE REAR ABUTMENTS ON THE RIGHT BRIDGES AND THE FORWARD ABUTMENTS ON THE LEFT BRIDGES.

TRAILING ABUTMENTS ARE THE FORWARD ABUTMENTS ON THE RIGHT BRIDGES AND THE REAR ABUTMENTS ON THE LEFT BRIDGES.

FOR SECTION B-B, SECTION C-C AND SECTION D-D SEE SHEET 8 / 37

COLPETZER-THOMAS, INC. AN ENGINEERING GROUP WILLOUGHBY • MENTOR • NORTH CANTON • STEUBENVILLE • LORAIN					
7 / 37					
WINGWALL DETAILS					
BRIDGE NO. LAK-90-1370L/1370R, 1487L/1487R, 1641L/1641R, 2003L/2003R AND 2110L/2110R					
DESIGNED	DRAWN	TRACED	CHECKED	REVIEWED	DATE
J.E.A.	R.L.B.	H.P.	R.J.C.	B.J.A.	11/2/87