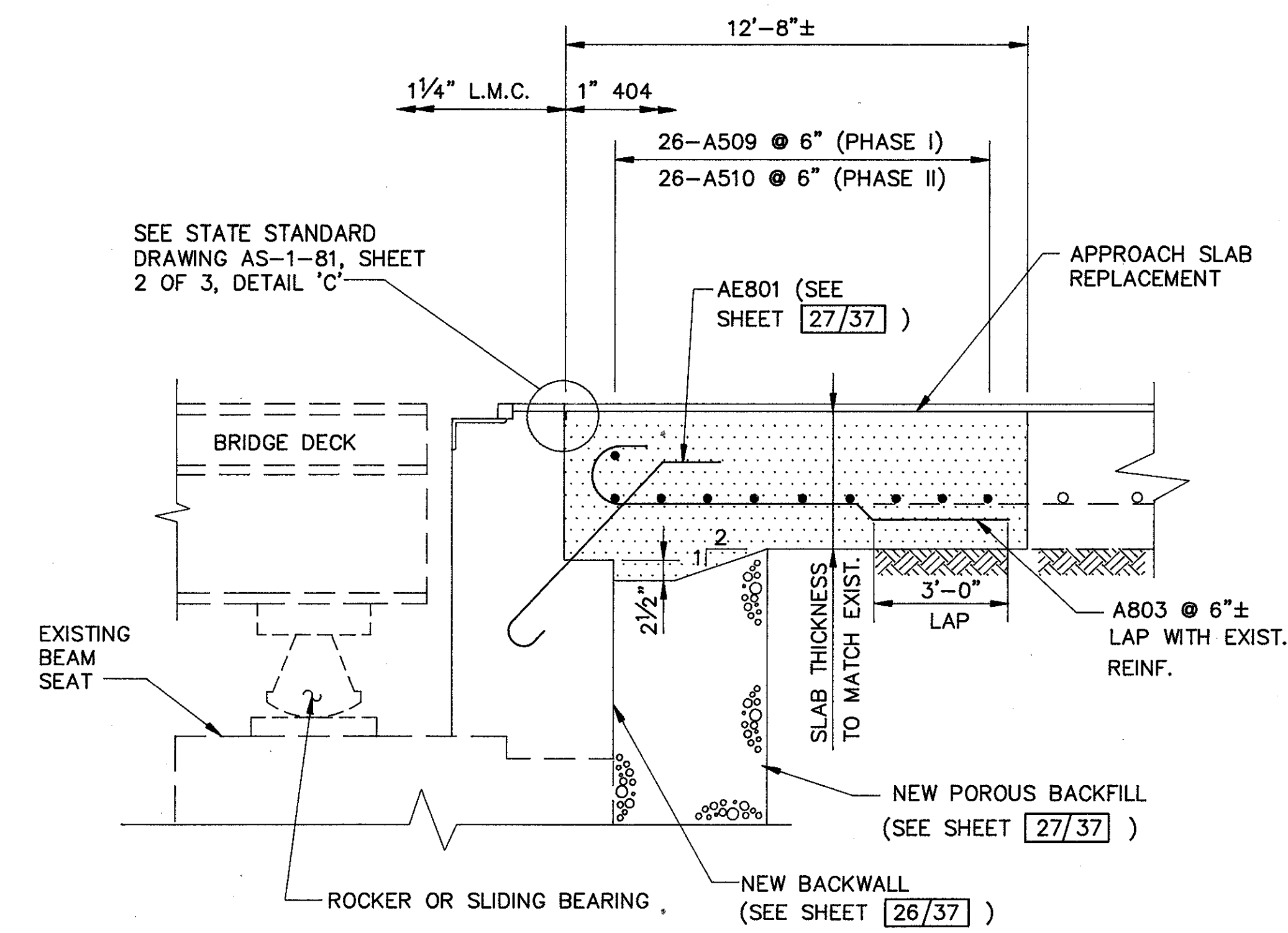


**EXIST. APPROACH SLAB REMOVAL LIMITS**

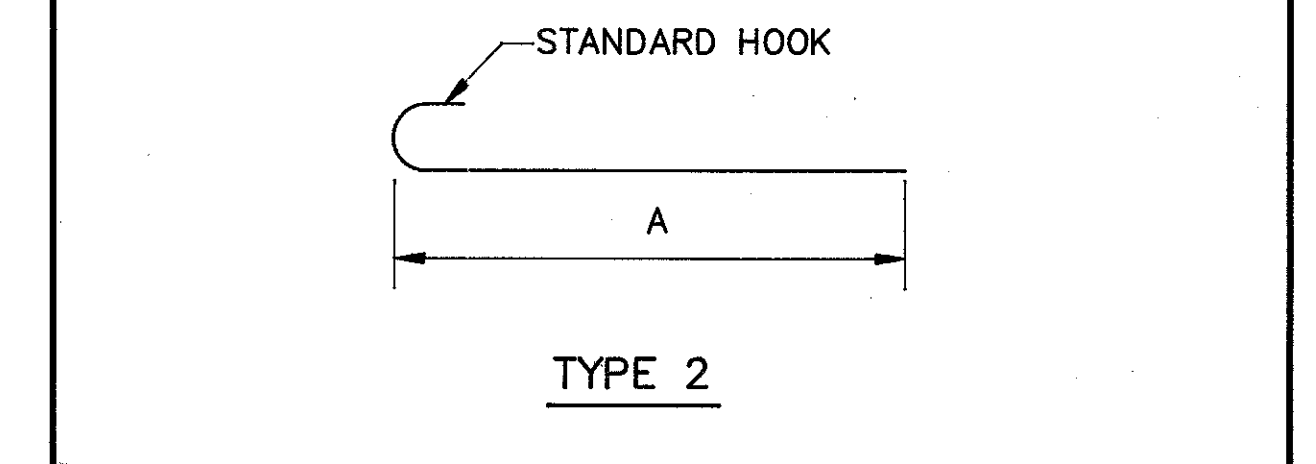
LAK-90-1487R (FORWARD & REAR) RAMP 'D' ONLY  
 LAK-90-1641R (FORWARD)



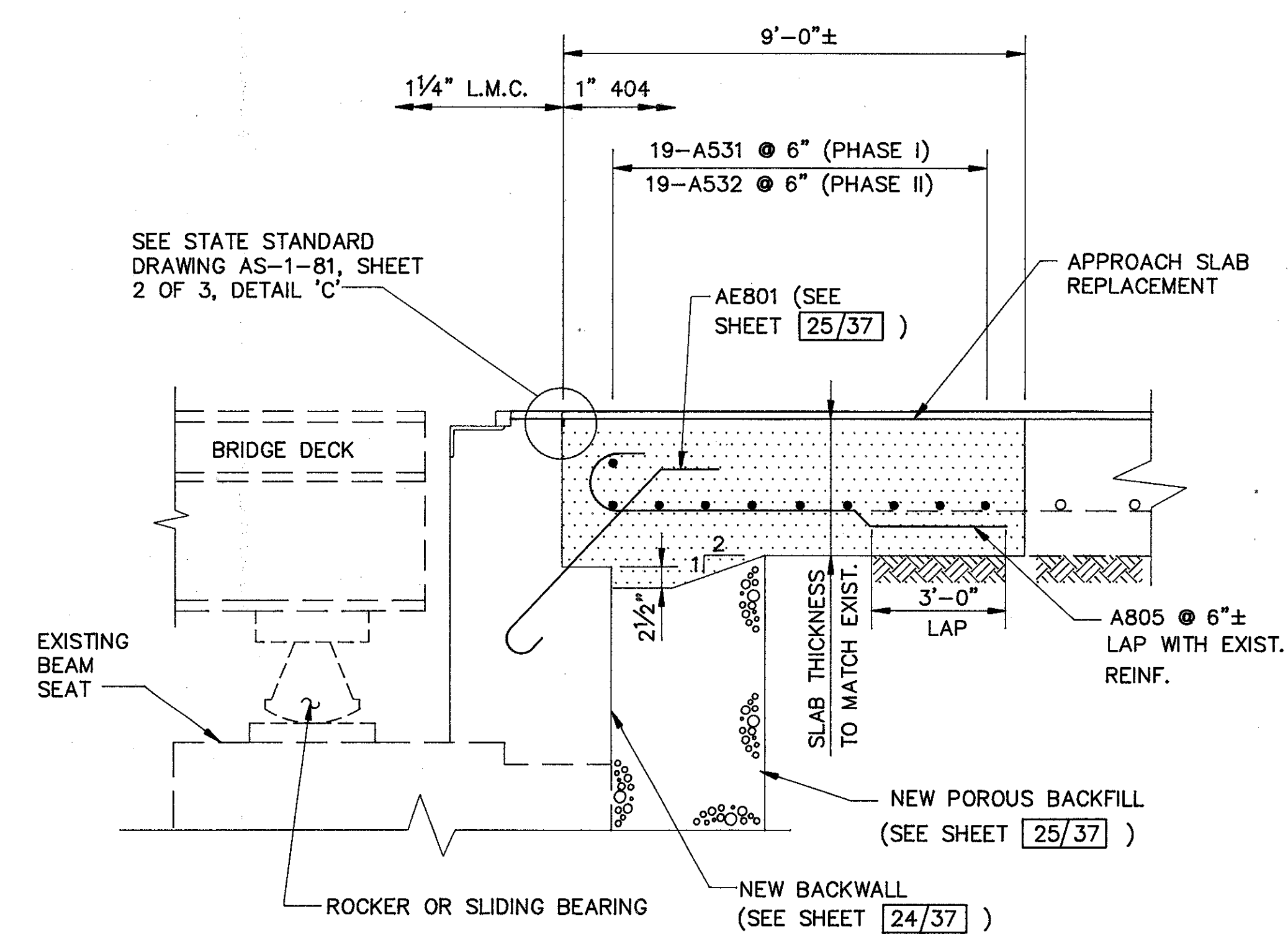
**PARTIAL APPROACH SLAB REPLACEMENT**

LAK-90-1641R FORWARD ABUTMENT

MARK	NO. REQUIRED		LENGTH	TYPE	A	WEIGHT (LBS)
		TOTAL				
<b>LAK-90-1641R (FORWARD)</b>						
A509	-	26	19'-11"	STR	-	540
A510	-	26	3'-2"	STR	-	86
A803	-	50	13'-1"	2	12'-2"	1,747
					TOTAL=	2,373
<b>LAK-90-1487R (REAR) RAMP 'D'</b>						
A529	-	19	17'-7"	STR	-	349
A530	-	19	16'-4"	STR	-	324
A804	-	54	12'-1"	2	11'-2"	1,742
					TOTAL=	2,415
<b>LAK-90-1487R (FORWARD) RAMP 'D'</b>						
A531	-	19	16'-0"	STR	-	317
A532	-	19	15'-0"	STR	-	297
A805	-	58	10'-9"	2	9'-10"	1,665
					TOTAL=	2,279

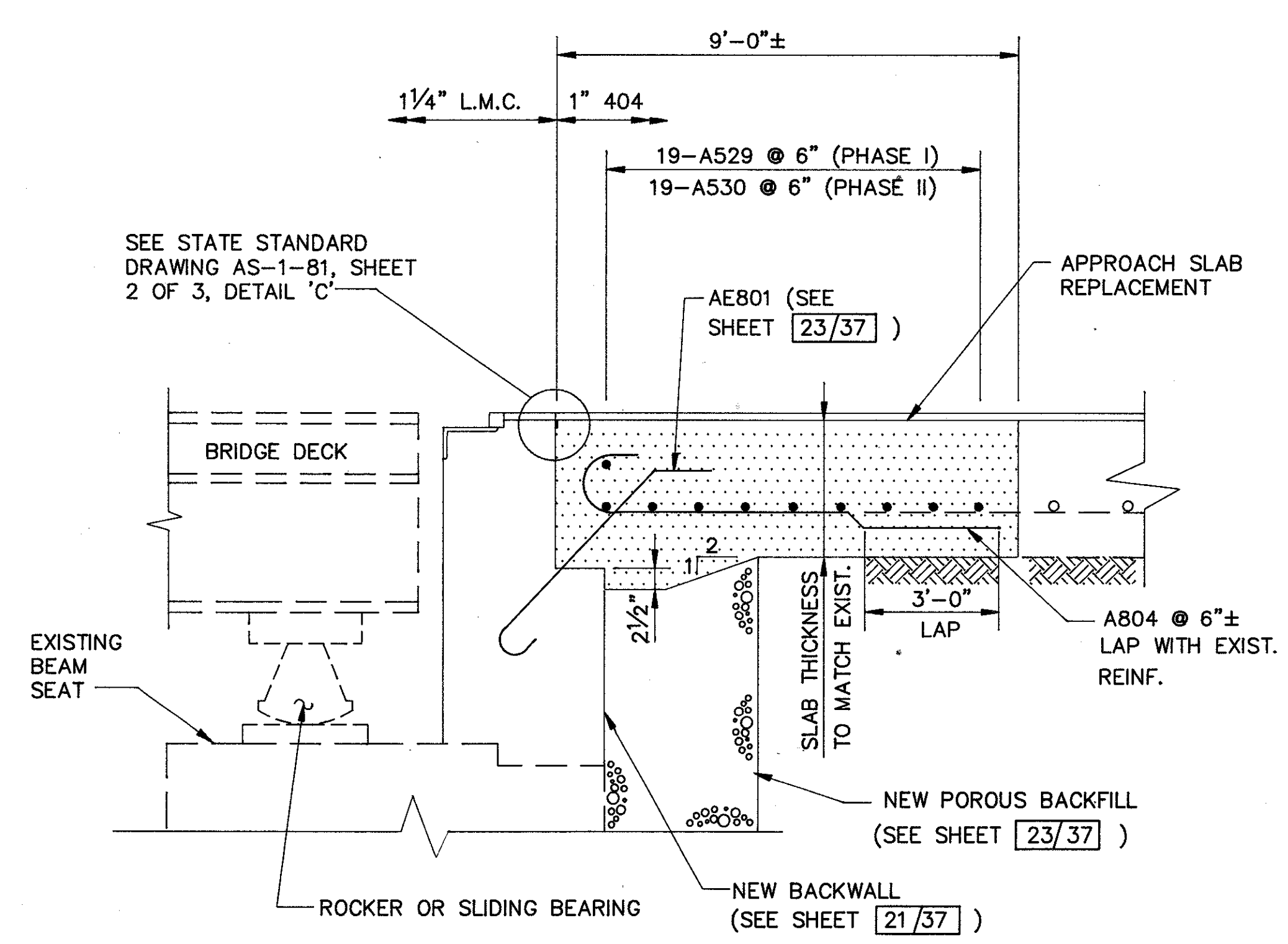


- NOTES:
- FOR PARTIAL APPROACH SLAB REPLACEMENT QUANTITIES REFER TO GENERAL SUMMARY, ITEM 611.
  - FOR PHASE CONSTRUCTION LIMITS, SEE MAINTENANCE OF TRAFFIC DRAWINGS.
  - NOTATION: L.M.C.-LATEX MODIFIED CONCRETE, REINF.-REINFORCING, EXIST.-EXISTING.
  - SEE STATE STANDARD DRAWING BP-3 FOR HOOK BOLT AND HOOK BOLT SPACING DETAILS TO BE USED ALONG LENGTH OF LONGITUDINAL PHASE CONSTRUCTION JOINT. (REINF. STEEL SHALL NOT BE CONTINUOUS THROUGH JOINT).
  - FOR ADDITIONAL INFORMATION SEE STATE STANDARD DRAWING AS-1-81, SHEETS 1 & 2 OF 3.
  - ALL DIMENSIONS ON THIS SHEET ARE TAKEN PERPENDICULAR TO THE FACE OF THE BACKWALL.



**PARTIAL APPROACH SLAB REPLACEMENT**

LAK-90-1487R FORWARD ABUTMENT  
 (RAMP "D")



**PARTIAL APPROACH SLAB REPLACEMENT**

LAK-90-1487R REAR ABUTMENT  
 (RAMP "D")