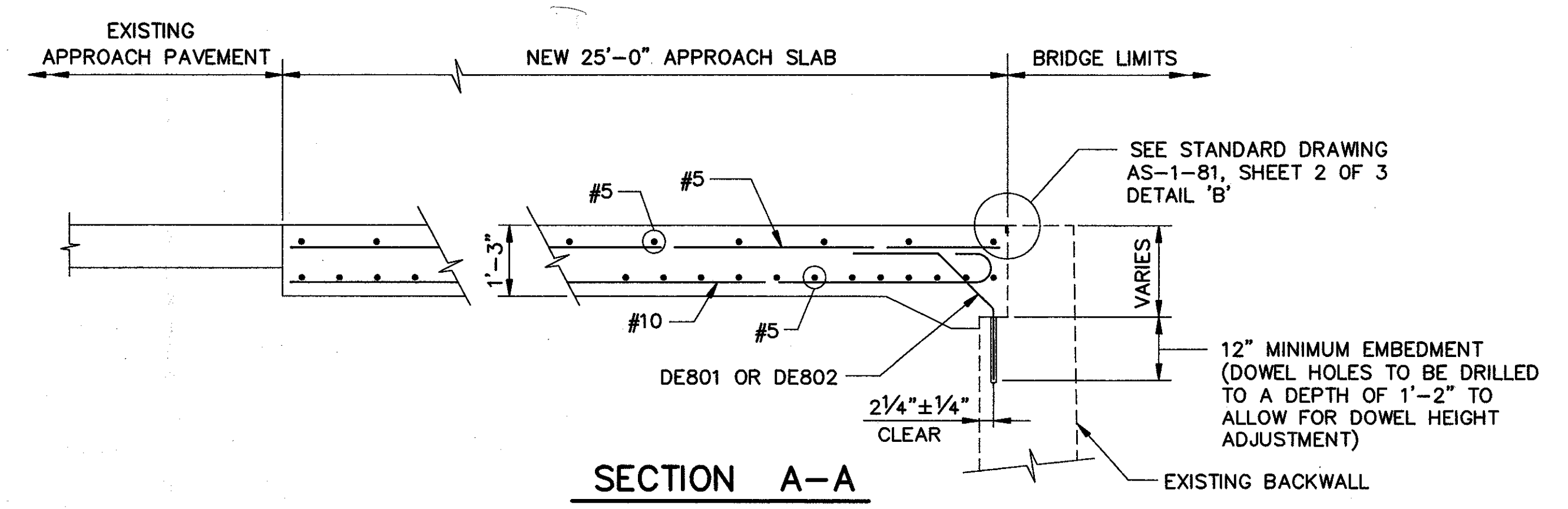
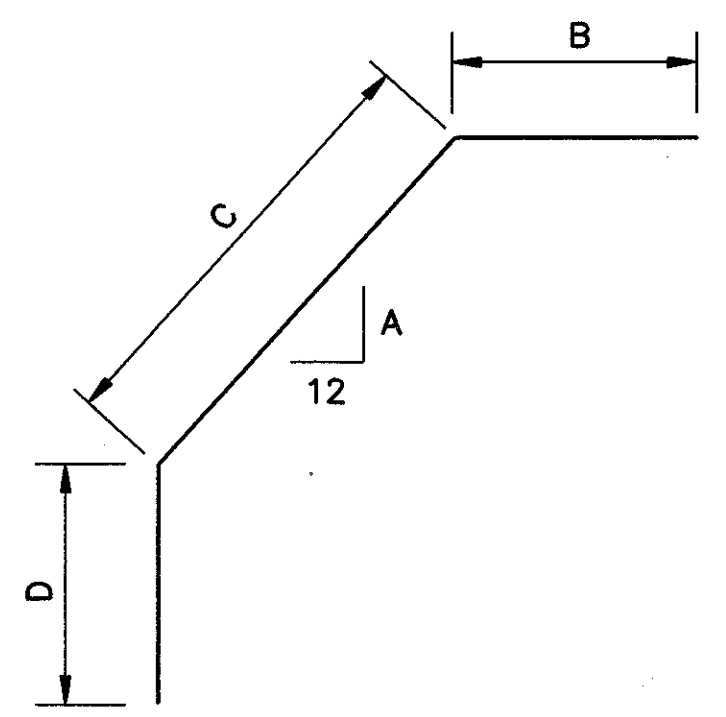
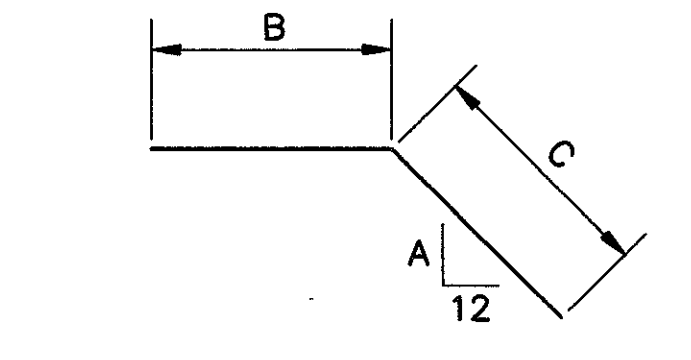
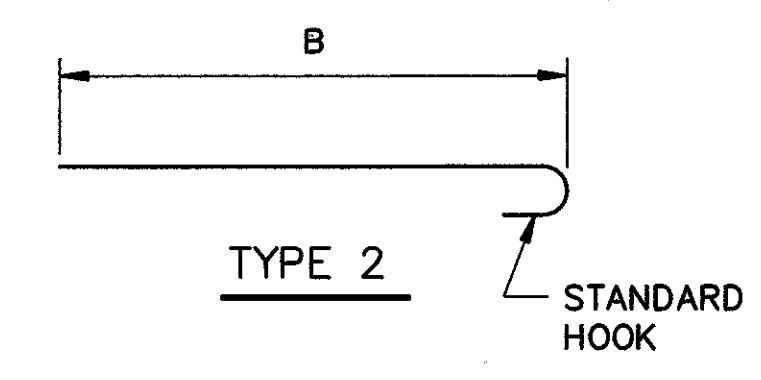


APPROACH SLAB PLAN
 BRIDGE NO. LAK-90-0877
 (REAR)



SECTION A-A

- (A) 4-B501 (3 SPACES @ 6" = 1'-6")
- (B) 2 EACH B503 THROUGH B508 (11 SPACES @ 8" = 7'-4")
- (C) 1 EACH B501 THROUGH B508 (7 SPACES @ 1'-6" = 10'-6")
- (D) 1 SERIES OF 8-A1005 (7 SPACES @ 7" = 4'-1")
- (E) 1 SERIES OF 8-A1007 (7 SPACES @ 7" = 4'-1")
- (F) 1 SERIES OF 3-C503 (2 SPACES @ 1'-6" = 3'-0")
- (G) 1 SERIES OF 3-C505 (2 SPACES @ 1'-6" = 3'-0")



TYPE 48

LAK-90-0877 REAR APPROACH SLAB										
MARK	NO. REQUIRED		LENGTH	TYPE	A	B	C	D	H	WEIGHT (LBS)
		TOTAL								
A1001		1	15'-3"	STR						66
A1002		1	16'-9"	STR						72
A1003		1	18'-7"	STR						80
A1004		1	21'-1"	STR						91
A1005	1 SERIES OF 8		$\frac{26'-1"}{26'-11"} = 24'-7\frac{1}{2}"$	2		$\frac{24'-7\frac{1}{2}}{25'-6"} = 24'-6"$			VARY BY 1 1/2"	912
A1006		25	25'-11"	2		24'-6"				2,788
A1007	1 SERIES OF 8		$\frac{25'-10"}{24'-11"} = 24'-4\frac{1}{2}"$	2		$\frac{24'-4\frac{1}{2}}{23'-6"} = 23'-6"$			VARY BY 1 1/2"	874
A1008		1	17'-5"	STR						75
A1009		1	14'-11"	STR						64
A1010		1	13'-1"	STR						56
A1011		1	11'-7"	STR						50
B501		5	24'-0"	STR						125
B502		3	24'-0"	STR						75
B503		3	24'-0"	STR						75
B504		3	24'-6"	STR						77
B505		3	25'-3"	STR						79
B506		3	26'-0"	STR						81
B507		3	27'-0"	STR						84
B508		3	28'-0"	STR						88
B509		25	28'-11"	STR						754
B510		4	8'-8"	9	2.75	7'-1 1/2"	1'-6 1/2"			36
B511		2	21'-7"	STR						45
B512		1	27'-7"	STR						29
B513		1	24'-4"	STR						25
B514		1	4'-1"	STR						4
C501		1	15'-0"	STR						16
C502		1	18'-11"	STR						20
C503	1 SERIES OF 3		$\frac{24'-9"}{25'-5"} = 24'-6"$	STR					VARY BY 4"	79
C504		10	24'-6"	STR						256
C505	1 SERIES OF 3		$\frac{24'-3"}{23'-7"} = 24'-6"$	STR					VARY BY 4"	75
C506		1	15'-3"	STR						16
C507		1	11'-4"	STR						12
										TOTAL = 7,179 LBS.
DE801		4	4'-0"	48	12	1'-5"	1'-4"	1'-3"		43
DE802		12	4'-2"	48	12	1'-5"	1'-6"	1'-3"		134
										EPOXY COATED TOTAL = 177 LBS.

NOTES: ALL DIMENSIONS ARE OUT TO OUT OF BARS.
 BARS WITH PREFIX OF "DE" ARE EPOXY COATED.

REINFORCING STEEL SAMPLES: REFER TO CMS SECTIONS 106.03, 700, 709.01 THROUGH 709.05 AND 709.08. SUFFICIENT ADDITIONAL REINFORCING STEEL SHALL BE PROVIDED FOR SAMPLING. RANDOM SAMPLES SHALL BE REPLACED IN THE STRUCTURES BY THE ADDITIONAL STEEL, SPLICED IN ACCORDANCE WITH 509.08.

FOR ADDITIONAL INFORMATION SEE STANDARD DRAWING AS-1-81 SHEETS 1 & 2 OF 3.

NOTATION: T. & BOT.-TOP & BOTTOM OF SLAB,
 BOT.-BOTTOM OF SLAB