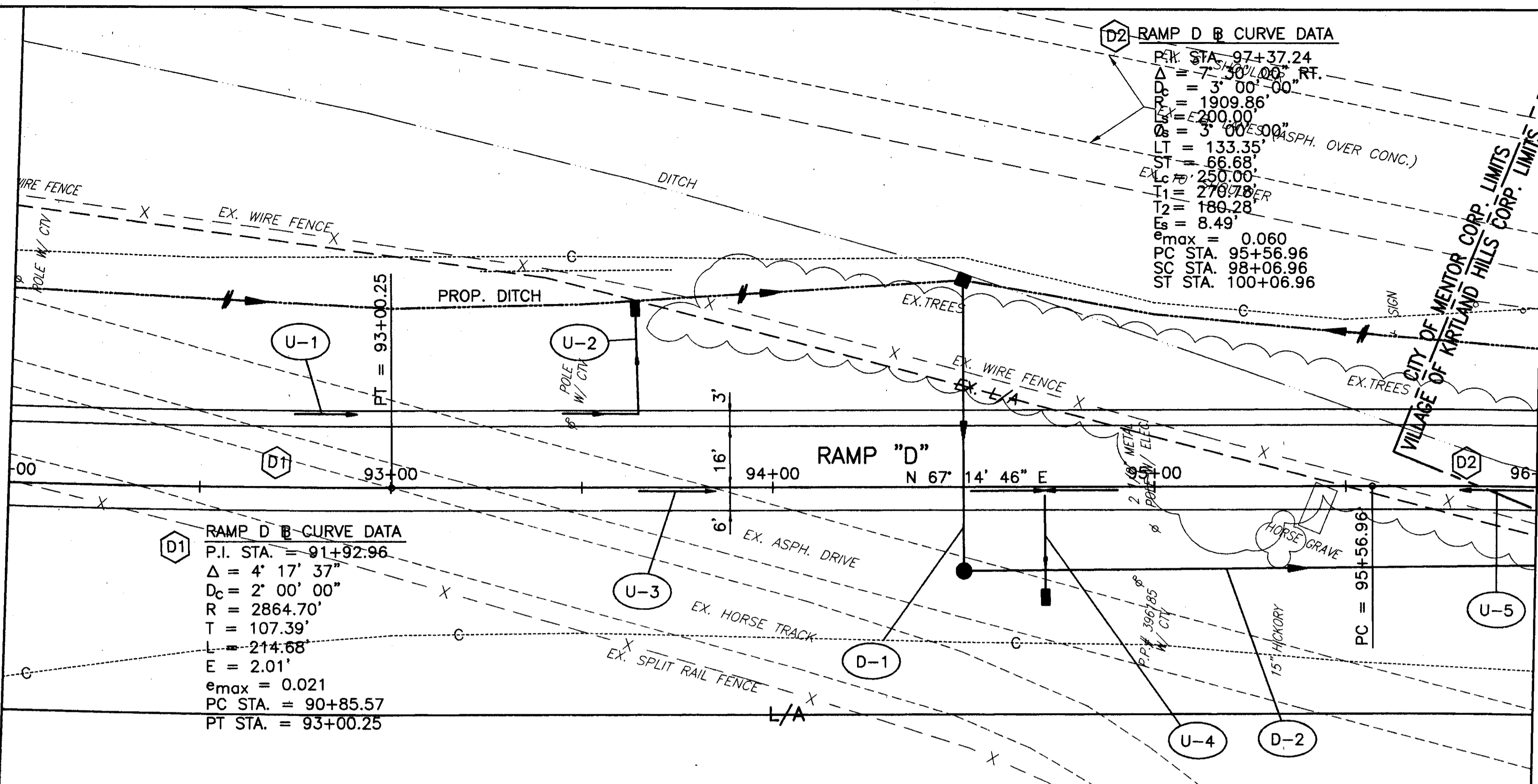


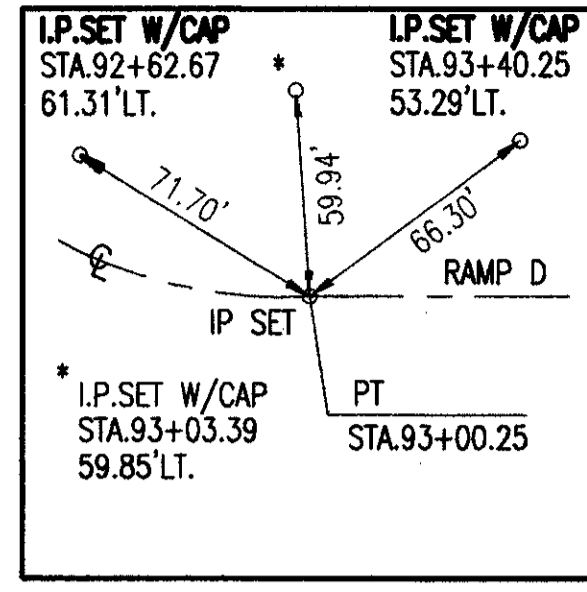
LINE MATCH - STA. 92+00

LINE MATCH - STA. 96+00

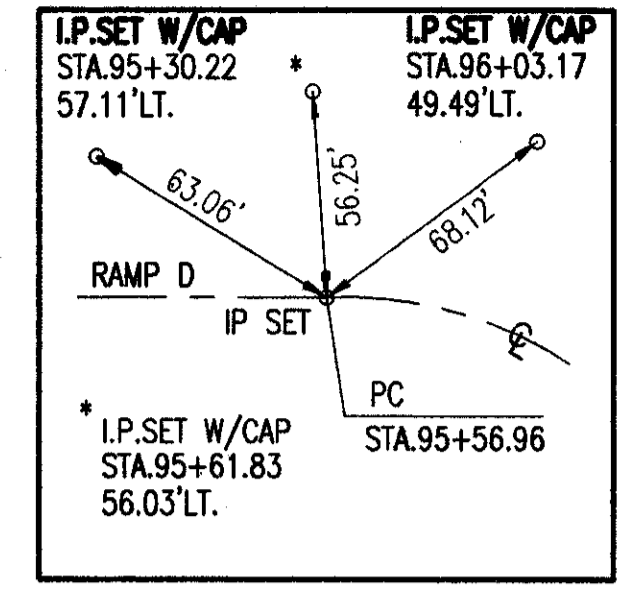


D2 RAMP D B CURVE DATA
 PK STA. 97+37.24
 $\Delta = 73.00^\circ$ RT.
 $R = 1909.86'$
 $D_c = 200.00'$
 $T = 133.35'$ (ASPH. OVER CONC.)
 $L = 66.68'$
 $E = 278.78'$
 $F = 189.28'$
 $E_s = 8.49'$
 $e_{max} = 0.060$
 PC STA. 95+56.96
 SC STA. 98+06.96
 ST STA. 100+06.96

D1 RAMP D B CURVE DATA
 P.I. STA. = 91+92.96
 $\Delta = 4^\circ 17' 37''$
 $D_c = 2^\circ 00' 00''$
 $R = 2864.70'$
 $T = 107.39'$
 $L = 214.68'$
 $E = 2.01'$
 $e_{max} = 0.021$
 PC STA. = 90+85.57
 PT STA. = 93+00.25

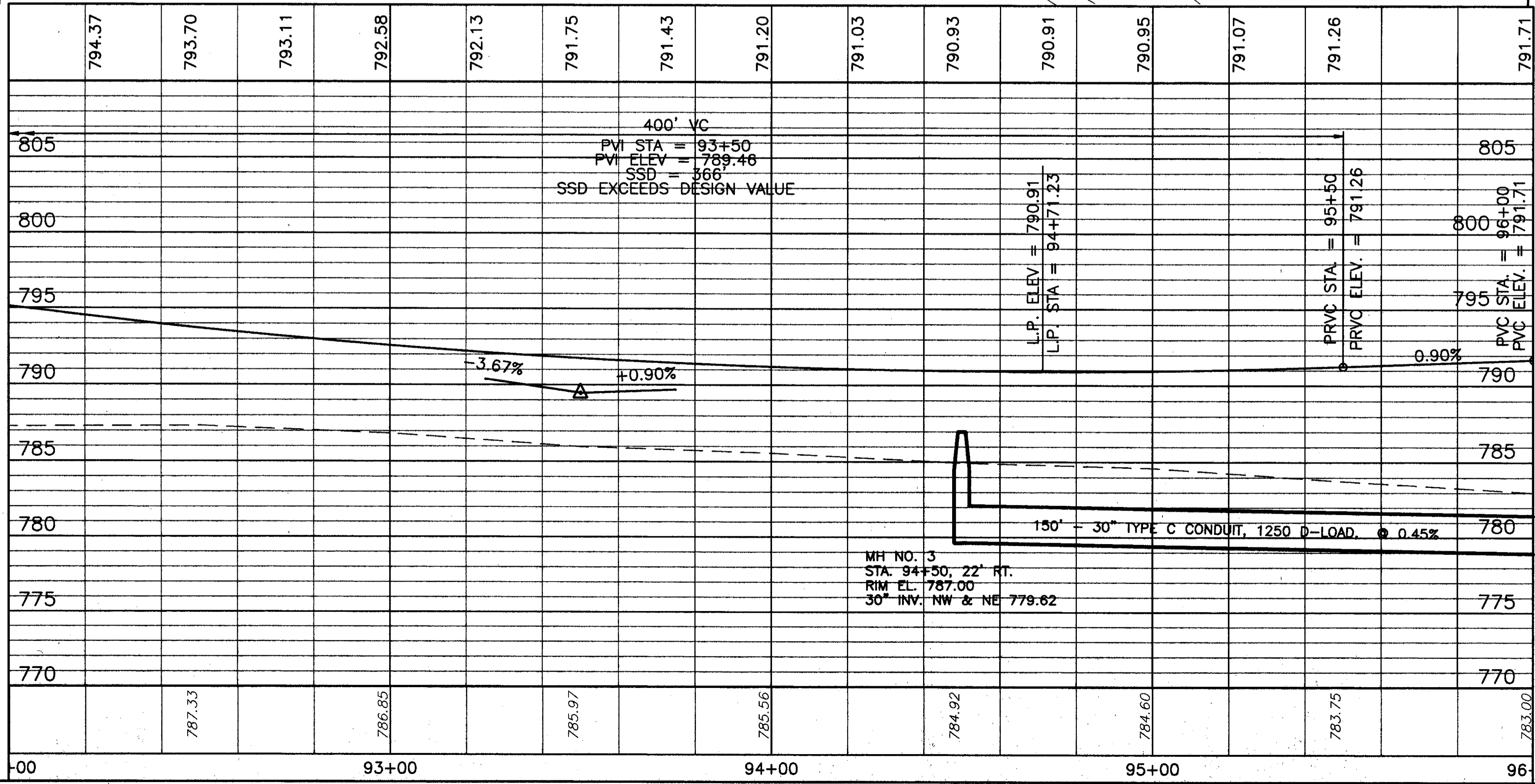


SWTIE#32



SWTIE#33

FOR TYPICAL SECTIONS, SEE SHEETS 5 THRU 15
 FOR CROSS SECTIONS AND PIPE PROFILES, SEE SHEETS 233 THRU 245
 FOR SUPERELEVATION TABLES, SEE SHEETS 246 THRU 254
 FOR INTERSECTION DETAILS, SEE SHEETS 255 THRU 262
 FOR SIGNING AND PAVEMENT MARKING PLAN, SEE SHEETS 315 THRU 317



604	MANHOLE NO. 3, AS PER PLAN	EACH	1		1
604	CATCH BASIN NO. 5 AS PER PLAN	EACH	1		1
603	30" CONDUIT, TYPE C, 1250 D-LOAD, AS PER PLAN	LN.FT.	150		150
603	30" CONDUIT, TYPE B, AS PER PLAN	LN.FT.	76		76
			TOTALS		

DRAINAGE		LOCATION	LN.FT.	LN.FT.
REF				
D-1		STA. 94+50, 54' LT. TO 22' RT.		
D-2		STA. 94+50, 54' LT. TO STA. 96+00		
			TOTALS	